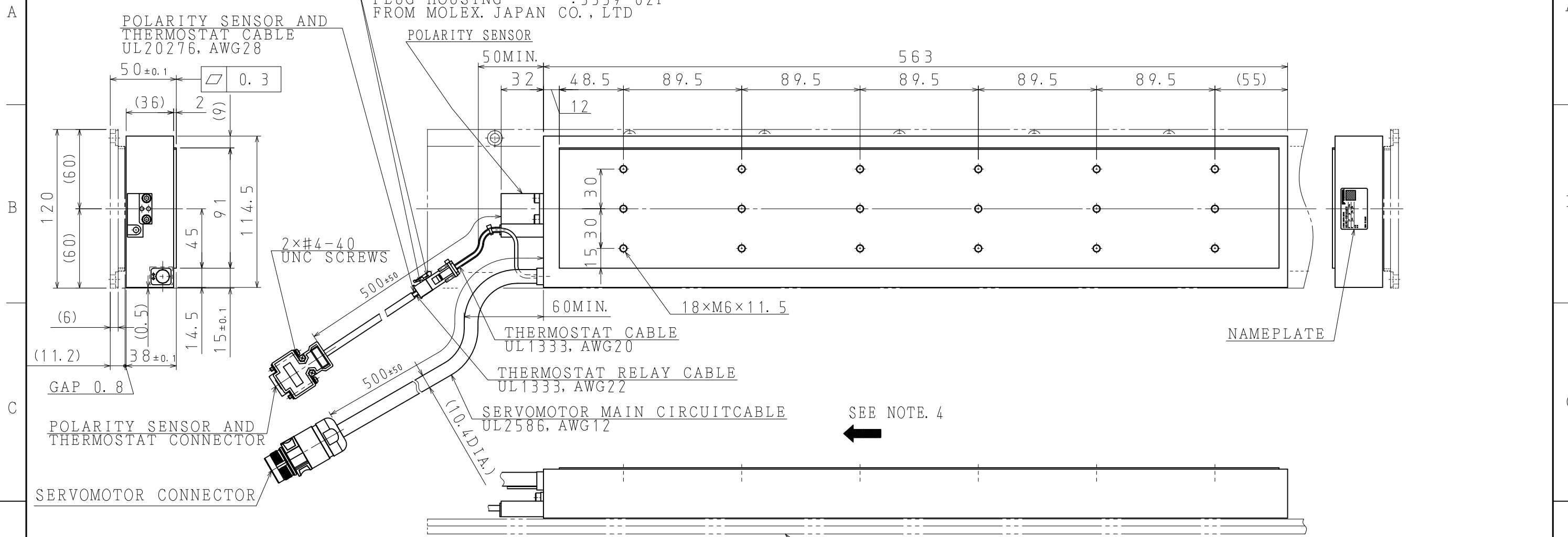
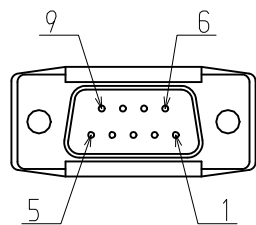


DWG. NO. 900-165-536

THERMOSTAT RELAY CONNECTOR
 RECEPTACLE HOUSING: 5557-02R
 PLUG HOUSING : 5559-02P
 FROM MOLEX. JAPAN CO., LTD

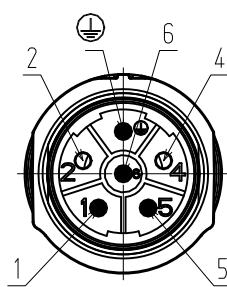


POLARITY SENSOR AND THERMOSTAT CONNECTOR SPECIFICATIONS



PIN NO.	SIGNAL
1	+5V (THERMOSTAT) +5V (POWER SUPPLY)
2	Su
3	Sv
4	Sw
5	0V (POWER SUPPLY)
6	-
7	-
8	-
9	THERMOSTAT

SERVOMOTOR CONNECTOR SPECIFICATIONS

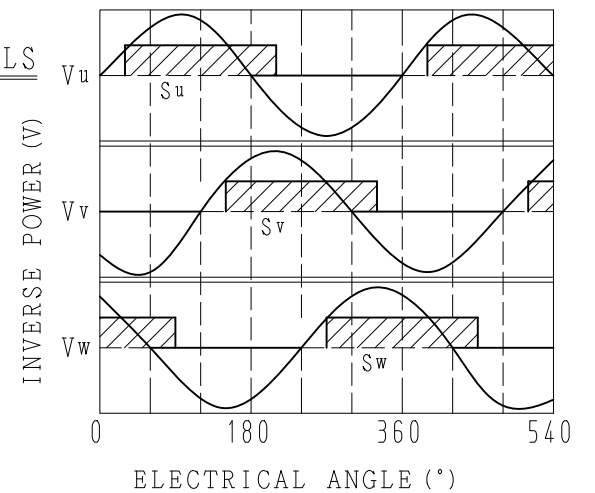


PIN NO.	SIGNAL
1	PHASE V
2	-
4	-
5	PHASE U
6	PHASE W
⊕	F G
CASE	SHIELD

MAGNETIC WAY 900-119-880

POLARITY SENSOR OUTPUT SIGNALS

THE FOLLOWING FIGURES SHOW THE RELATIONSHIP BETWEEN THE Su, Sv, AND Sw POLARITY SENSOR OUTPUT SIGNALS AND THE INVERSE POWER OF EACH MOTOR PHASE Vu, Vv, AND Vw WHEN THE MOVING COIL MOVES IN THE DIRECTION INDICATED BY THE ARROW IN THE DIMENSIONAL DRAWINGS OF THE MOVING COIL.



CONNECTOR: SF-5EP1N8A90A2 (1605496)
 CONTACT: SF-7MP2000 (1605626)
 FROM PHOENIX CONTACT GMBH & CO. KG

NOTES

- ALL DIMENSIONS ARE IN mm.
- THIS DRAWING IS FOR COIL ASSEMBLY ONLY.
- MOTOR MATING CONNECTOR AND POLARITY SENSOR MATING CONNECTOR ARE NOT INCLUDED.
- THE MOVING COIL MOVES IN THE DIRECTION INDICATED BY THE ARROW WHEN CURRENT FLOWS IN THE FOLLOWING PHASE SEQUENCE: U, V, W.

PIN CONNECTOR: 17JE-23090-02 (D8C) -CG
 FROM DDK LTD.
 MATING CONNECTOR

SOCKET CONNECTOR: 17JE-13090-02 (D8C) A-CG
 STUDS: 17L-002C OR 17L-002C1

MOVING COIL MODEL	RATED FORCE [N]	PEAK FORCE [N]	APPROX. MASS [kg]	CHARACTERISTICS
SGLFW2-90D560AS1E	1680	5040	14.9	900-126-367