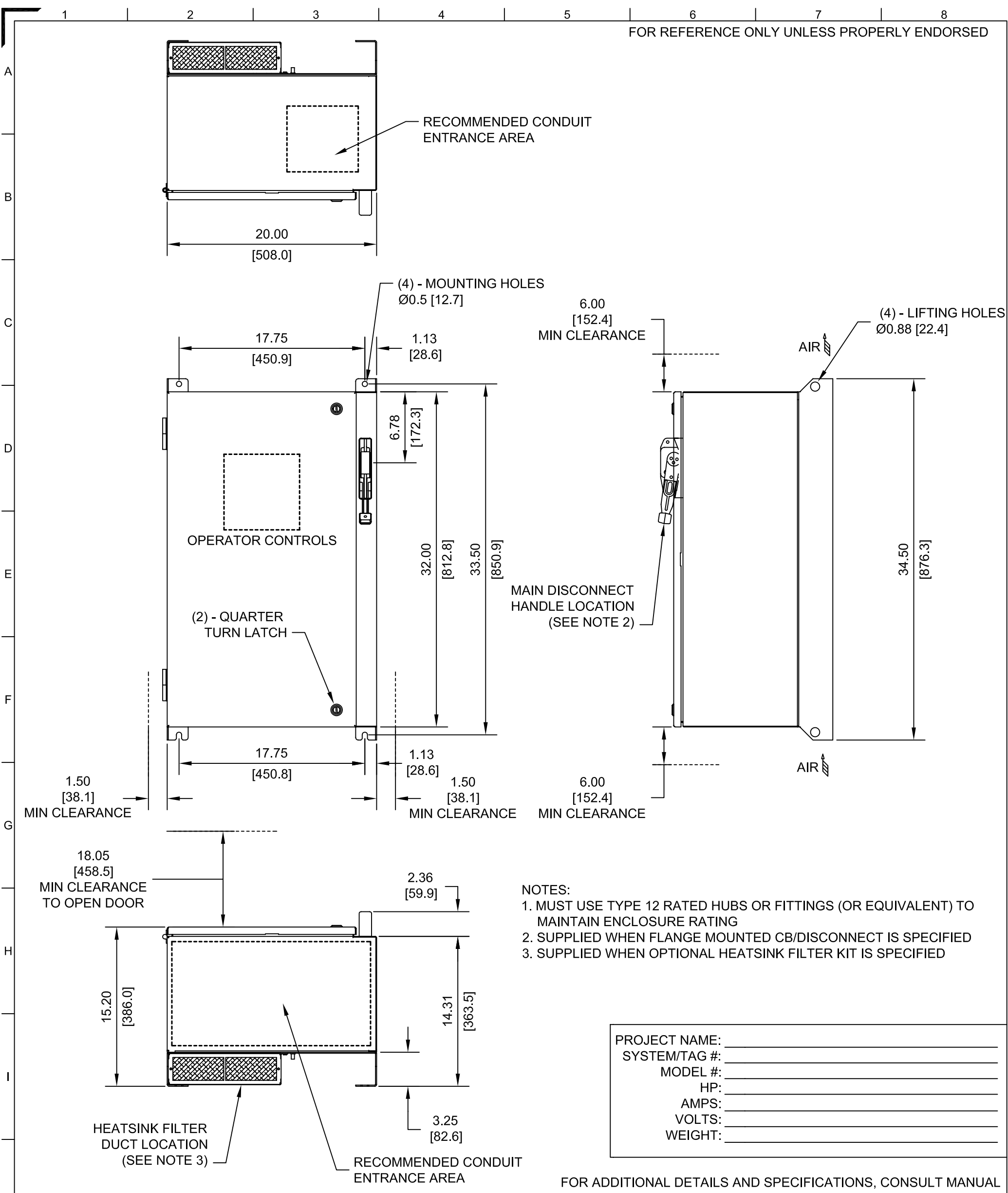


FOR REFERENCE ONLY UNLESS PROPERLY ENDORSED



- NOTES:
- MUST USE TYPE 12 RATED HUBS OR FITTINGS (OR EQUIVALENT) TO MAINTAIN ENCLOSURE RATING
 - SUPPLIED WHEN FLANGE MOUNTED CB/DISCONNECT IS SPECIFIED
 - SUPPLIED WHEN OPTIONAL HEATSINK FILTER KIT IS SPECIFIED

PROJECT NAME: _____
 SYSTEM/TAG #: _____
 MODEL #: _____
 HP: _____
 AMPS: _____
 VOLTS: _____
 WEIGHT: _____

FOR ADDITIONAL DETAILS AND SPECIFICATIONS, CONSULT MANUAL

DIMENSIONS ARE IN INCHES AND [MM]

YASKAWA
 A World of Automation Solutions™

THIS DOCUMENT AND INFORMATION CONTAINED IN IT ARE CONFIDENTIAL, AND CANNOT BE COPIED OR DISCLOSED IN WHOLE OR IN PART WITHOUT THE EXPRESS WRITTEN CONSENT OF YASKAWA ELECTRIC AMERICA INC.

DRAWN: SR	DATE: 4.25.05	TITLE: DIMENSION DRAWING ENCLOSURE	
CHECKED: DC	DATE: 4.26.05	32H X 20W X 16D	
TECH:	DATE:	NEMA TYPE 1/12, IP54	
APPROVED: JZ	DATE: 4.26.05	SIZE: A	REVISION: R00
ORIGINAL DESIGN: SR	DATE: 4.25.05	PAGE: 01 of 01	
		DRAWING #: DD.AFD.130.01	