

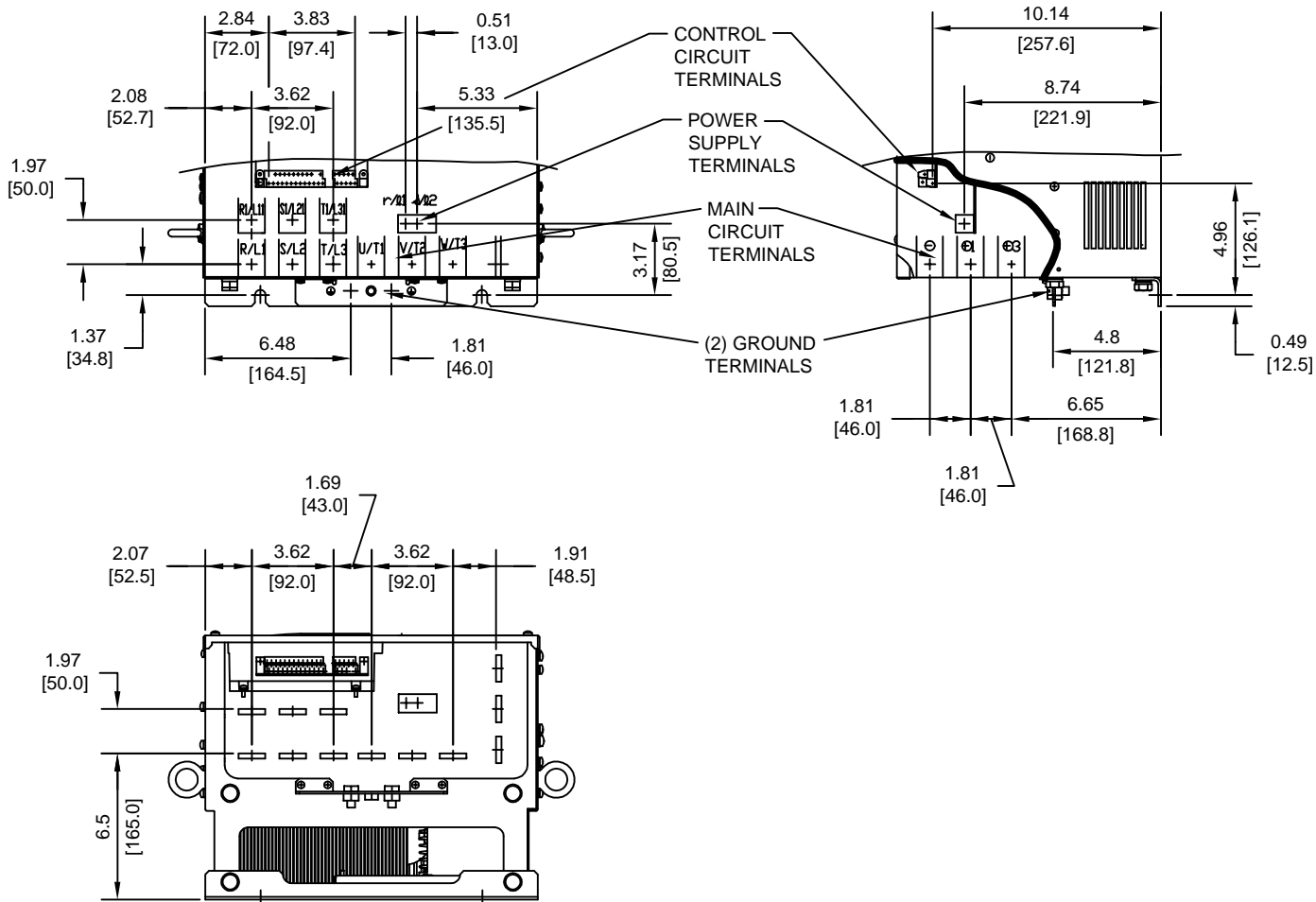
MODEL #	VOLTAGE (VAC)	OUTPUT CURRENT (A)	WEIGHT LBS (Kg)	HEAT LOSS (W)		
				INT	EXT	TOTAL
2037	208/230	162	125 (57)	421	1010	1431

INT=INTERNAL COMPONENTS  
EXT=EXTERNAL HEATSINK

FOR ADDITIONAL DETAILS AND SPECIFICATIONS, CONSULT MANUAL

TOLERANCES/REFERENCES: -	<b>YASKAWA</b> A World of Automation Solutions™ YASKAWA ELECTRIC AMERICA, INC. Corporate Headquarters 2121 Norman Drive South Waukegan, IL 60085 1-800-YASKAWA http://www.yaskawa.com	DRAWN: J. MATTAS	DATE 4-14-05	TITLE: E7 DIMENSION DRAWING
		CHECKED: M. RUCINSKI	DATE 5-3-05	FRAME SIZE 7
UNITS: IN[mm]	SCALE: 1:10	TECH: J. CAIRO	DATE 4-15-05	IP00 ENCLOSURE
		APPROVED: T. SASADA	DATE 6-8-05	E7U2037
		ORIGINAL DESIGN: -	DATE -	SIZE A
				REVISION R00
				PAGE 1 of 3
				DRAWING #: DD.E7.FR7.IP00.01

TERMINAL AND WIRING DETAILS (SCALE 1:8)



TERMINAL SPECIFICATIONS FOR MAIN CIRCUIT AND GROUND

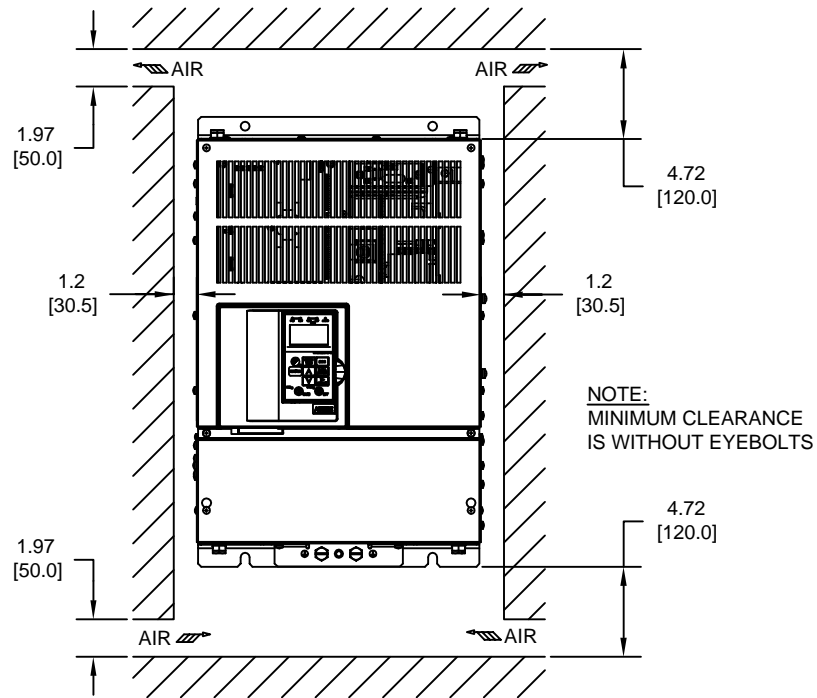
MODEL #	TERMINAL SYMBOL	TERMINAL SCREW	CLAMPING TORQUE lb.in.(N.m.)
CIMR-E7U			
2037	R/L1, S/L2, T/L3, ⊕, ⊕1, R1/L11, S1/L21, T1/L31, U/T1, V/T2, W/T3, ⊕	M10	155 TO 198 (17.6 TO 22.5)
	⊕3	M8	77.4 TO 95.0 (8.8 TO 10.8)
	r/l1, s/l2	M4	11.4 TO 12.3 (1.3 TO 1.4)

NOTE: REFER TO APPLICABLE CODES FOR PROPER WIRE TYPE AND SIZE

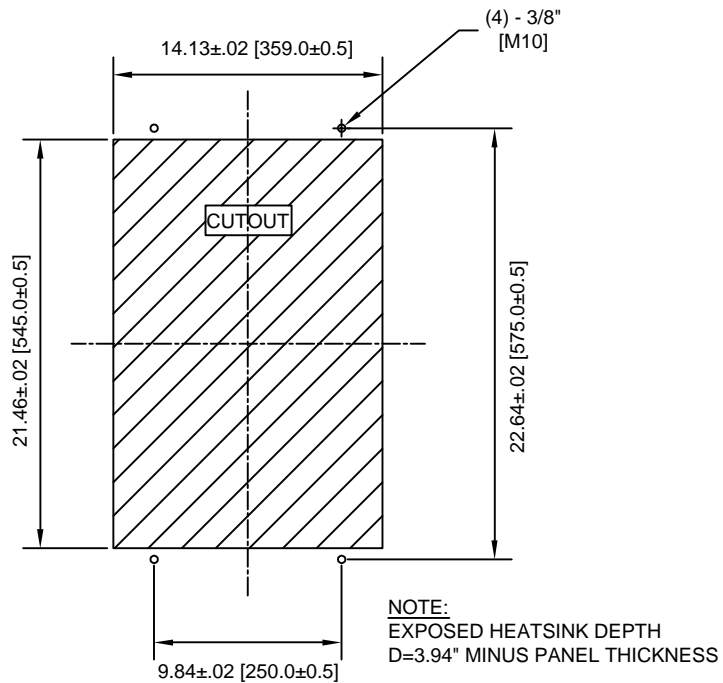
FOR ADDITIONAL DETAILS AND SPECIFICATIONS, CONSULT MANUAL

TOLERANCES/REFERENCES: - - - - - -	<b>YASKAWA</b> <i>A World of Automation Solutions™</i> YASKAWA ELECTRIC AMERICA, INC. Corporate Headquarters 2121 Norman Drive South Waukegan, IL 60085 1-800-YASKAWA http://www.yaskawa.com	DRAWN: J. MATTAS	DATE 4-14-05	TITLE: E7 DIMENSION DRAWING		
		CHECKED: M. RUCINSKI	DATE 5-3-05	FRAME SIZE 7		
		TECH: J. CAIRO	DATE 4-15-05	IP00 ENCLOSURE		
		APPROVED: T. SASADA	DATE 6-8-05	E7U2037		
UNITS: IN[mm]	SCALE: BY VIEW	ORIGINAL DESIGN: -	DATE -	SIZE A	REVISION R00	PAGE 2 of 3
			DRAWING #: DD.E7.FR7.IP00.01			


MINIMUM INSTALLATION CLEARANCES (SCALE 1:10)



PANEL CUTOUT FOR EXTERNAL HEATSINK MOUNTING CONFIGURATION (SCALE 1:10)



FOR ADDITIONAL DETAILS AND SPECIFICATIONS, CONSULT MANUAL

TOLERANCES/REFERENCES: -		 <b>YASKAWA</b> <i>A World of Automation Solutions™</i> <b>YASKAWA ELECTRIC AMERICA, INC.</b> Corporate Headquarters 2121 Norman Drive South Waukegan, IL 60085 1-800-YASKAWA <a href="http://www.yaskawa.com">http://www.yaskawa.com</a>	DRAWN: <b>J. MATTAS</b> DATE: <b>4-14-05</b>	TITLE: <b>E7 DIMENSION DRAWING</b>
UNITS: <b>IN[mm]</b>	SCALE: <b>BY VIEW</b>		CHECKED: <b>M. RUCINSKI</b> DATE: <b>5-3-05</b>	DATE: <b>5-3-05</b>
		TECH: <b>J. CAIRO</b> DATE: <b>4-15-05</b>	DATE: <b>4-15-05</b>	<b>E7U2037</b>
		APPROVED: <b>T. SASADA</b> DATE: <b>6-8-05</b>	DATE: <b>6-8-05</b>	SIZE: <b>A</b> REVISION: <b>R00</b> PAGE: <b>3 of 3</b>
		ORIGINAL DESIGN: -	DATE: -	DRAWING #: <b>DD.E7.FR7.IP00.01</b>