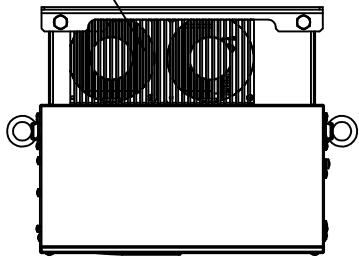


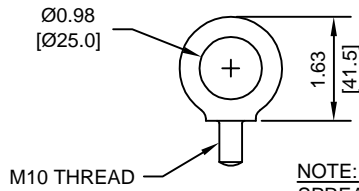
1 2 3 4 5 6 7 8

A  
B  
C  
D  
E  
F  
G  
H  
I  
J

(2) EXTERNAL COOLING FANS

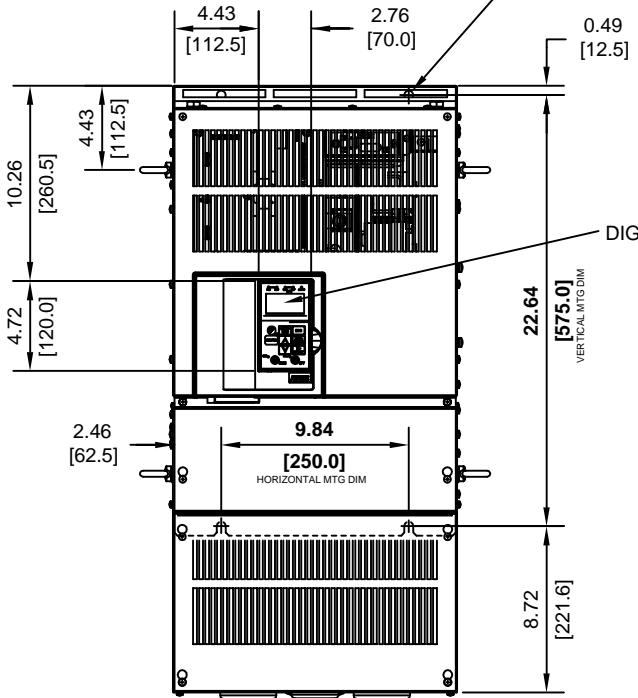


LIFTING AND EYEBOLT DETAILS



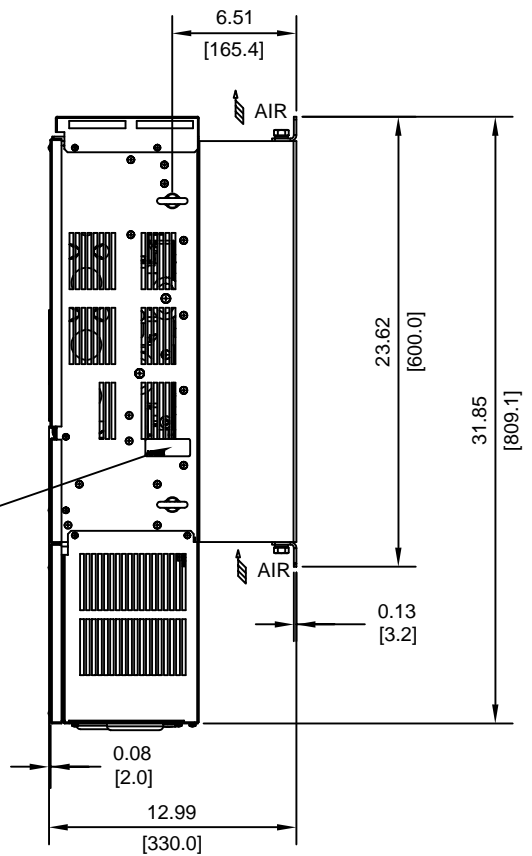
NOTE: SPREADER BAR REQUIRED TO AVOID DAMAGE DURING LIFTING

(4)-MOUNTING HOLES FOR 3/8"[M10] SCREWS



DIGITAL OPERATOR

NAMEPLATE

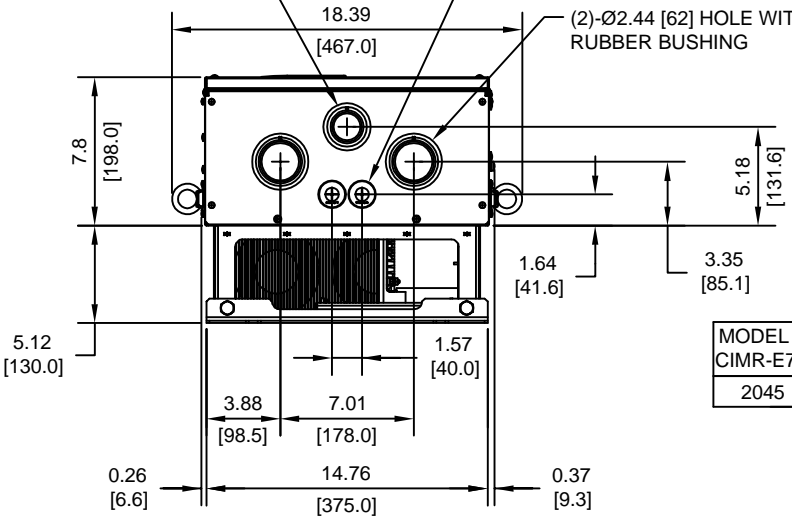


FRONT VIEW

Ø1.97 [50] HOLE WITH RUBBER BUSHING

(2)-Ø1.10 [28] HOLE WITH RUBBER BUSHING

(2)-Ø2.44 [62] HOLE WITH RUBBER BUSHING



MODEL #	VOLTAGE (VAC)	OUTPUT CURRENT (A)	WEIGHT LBS (Kg)	HEAT LOSS (W)		
				INT	EXT	TOTAL
2045	208/230	192	150 (68)	500	1228	1728

INT=INTERNAL COMPONENTS  
EXT=EXTERNAL HEATSINK

FOR ADDITIONAL DETAILS AND SPECIFICATIONS, CONSULT MANUAL

TOLERANCES/REFERENCES:
-
-
-
-
-
-
-
-
-
-
-
-
-
UNITS:
SCALE:
IN[mm]
1:10

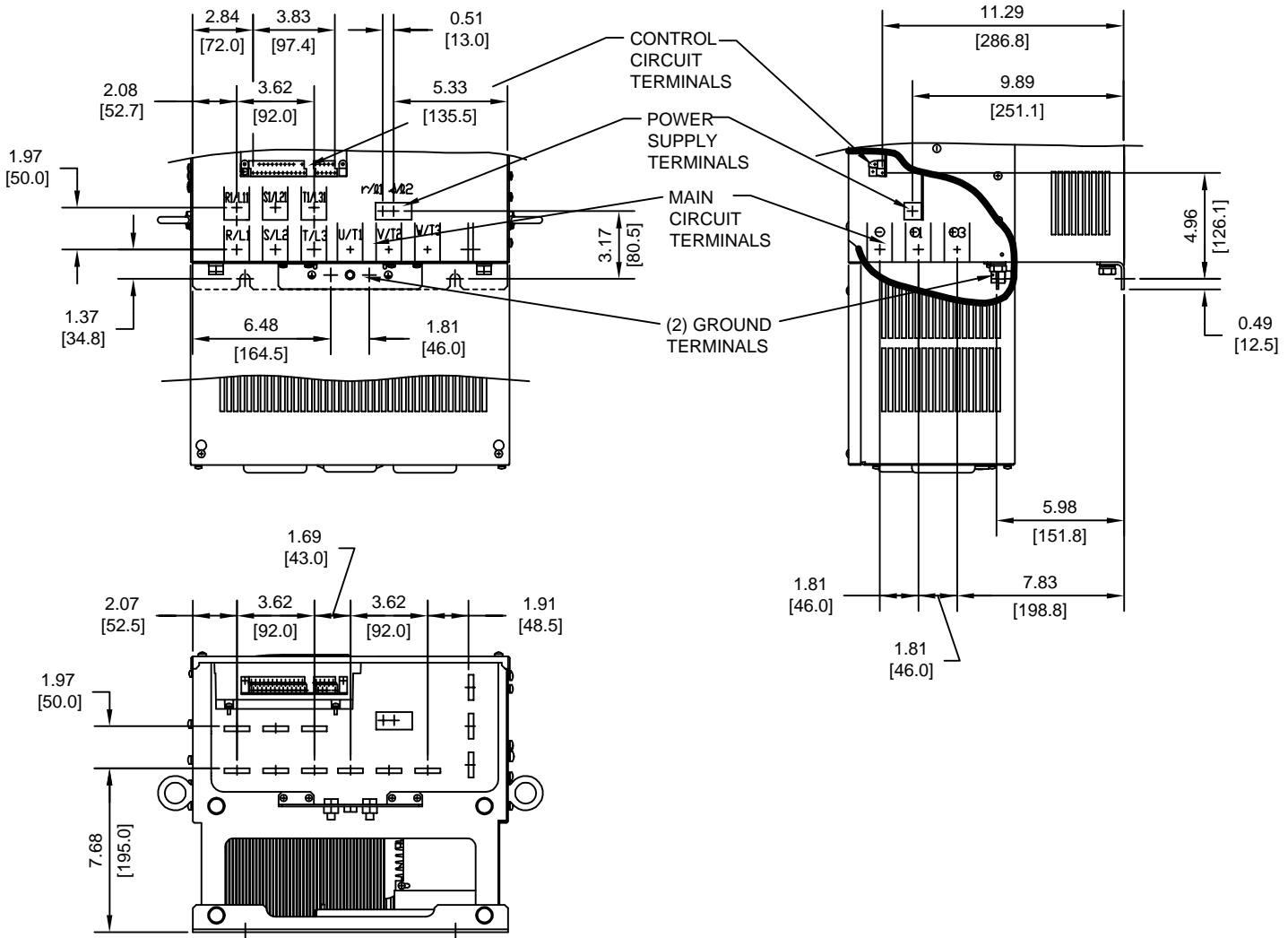
**YASKAWA**  
A World of Automation Solutions™

YASKAWA ELECTRIC AMERICA, INC.  
Corporate Headquarters  
2121 Norman Drive South  
Waukegan, IL 60085  
1-800-YASKAWA  
http://www.yaskawa.com

DRAWN:	J. MATTAS	DATE:	3-30-05
CHECKED:	M. RUCINSKI	DATE:	5-3-05
TECH:	J. CAIRO	DATE:	3-31-05
APPROVED:	T. SASADA	DATE:	6-8-05
ORIGINAL DESIGN:	-	DATE:	-

TITLE:	E7 DIMENSION DRAWING		
	FRAME SIZE 8		
	NEMA TYPE 1/IP20 ENCLOSURE		
	E7U2045		
SIZE:	REVISION:	PAGE:	
A	R00	1 of 3	
DRAWING #:			
DD.E7.FR8.N1.01			

TERMINAL AND WIRING DETAILS (SCALE 1:8)



TERMINAL SPECIFICATIONS FOR MAIN CIRCUIT AND GROUND

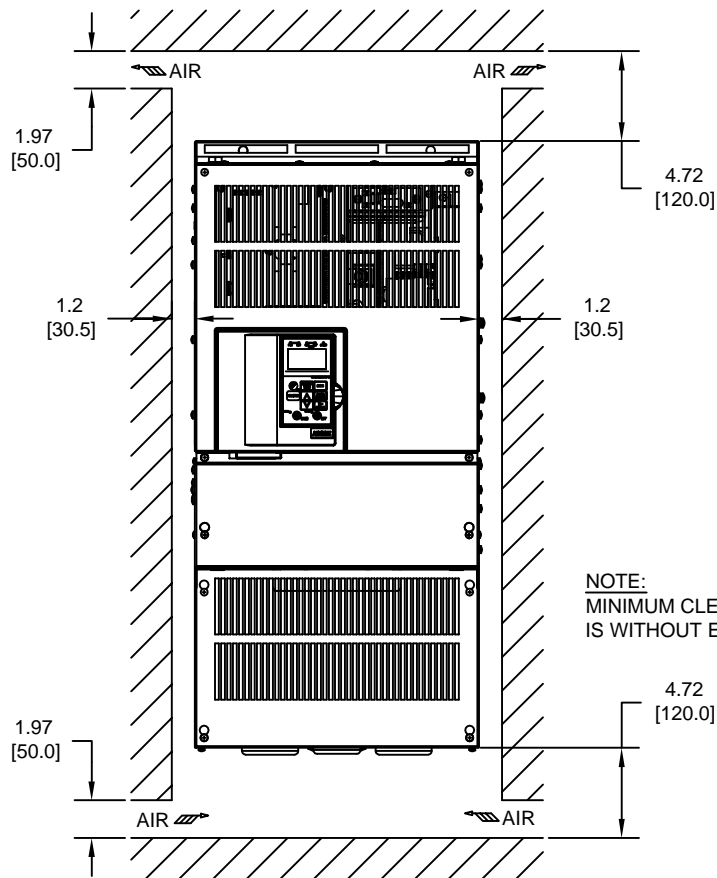
MODEL #	TERMINAL SYMBOL	TERMINAL SCREW	CLAMPING TORQUE lb.in.(N.m.)
2045	R/L1, S/L2, T/L3, ⊖, ⊕1, R1/L11, S1/L21, T1/L31, U/T1, V/T2, W/T3, ⊕	M10	155 TO 198 (17.6 TO 22.5)
	⊕3	M8	77.4 TO 95.0 (8.8 TO 10.8)
	r/l1, s/l2	M4	11.4 TO 12.3 (1.3 TO 1.4)

NOTE: REFER TO APPLICABLE CODES FOR PROPER WIRE TYPE AND SIZE

FOR ADDITIONAL DETAILS AND SPECIFICATIONS, CONSULT MANUAL

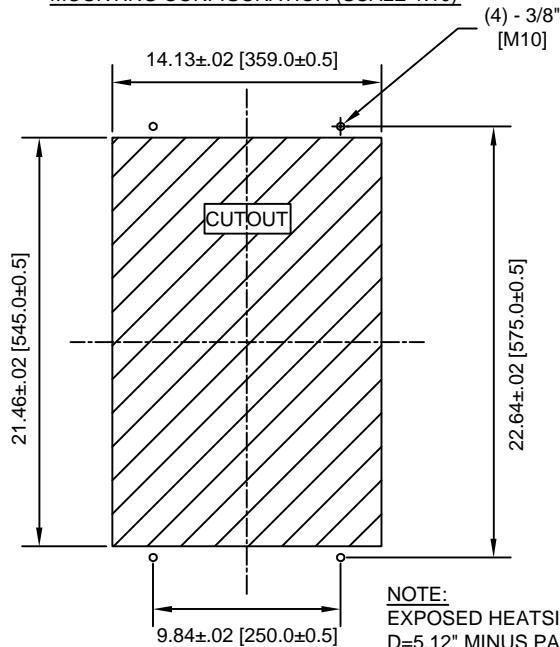
TOLERANCES/REFERENCES: - - - - -	<p><b>YASKAWA</b> A World of Automation Solutions™</p> <p>YASKAWA ELECTRIC AMERICA, INC. Corporate Headquarters 2121 Norman Drive South Waukegan, IL 60085 1-800-YASKAWA http://www.yaskawa.com</p>	DRAWN: J. MATTAS	DATE 3-30-05	TITLE: E7 DIMENSION DRAWING		
		CHECKED: M. RUCINSKI	DATE 5-3-05	FRAME SIZE 8		
		TECH: J. CAIRO	DATE 3-31-05	NEMA TYPE 1/IP20 ENCLOSURE		
		APPROVED: T. SASADA	DATE 6-6-05	E7U2045		
UNITS: IN[mm]	SCALE: BY VIEW	ORIGINAL DESIGN: -	DATE -	SIZE A	REVISION R00	PAGE 2 of 3
				DRAWING #: <b>DD.E7.FR8.N1.01</b>		

MINIMUM INSTALLATION CLEARANCES (SCALE 1:10)




NOTE:  
MINIMUM CLEARANCE  
IS WITHOUT EYEBOLTS

PANEL CUTOUT FOR EXTERNAL HEATSINK  
MOUNTING CONFIGURATION (SCALE 1:10)



NOTE:  
EXPOSED HEATSINK DEPTH  
D=5.12" MINUS PANEL THICKNESS

FOR ADDITIONAL DETAILS AND SPECIFICATIONS, CONSULT MANUAL

TOLERANCES/REFERENCES: -		 <b>YASKAWA</b> <i>A World of Automation Solutions™</i> <b>YASKAWA ELECTRIC AMERICA, INC.</b> Corporate Headquarters 2121 Norman Drive South Waukegan, IL 60085 1-800-YASKAWA <a href="http://www.yaskawa.com">http://www.yaskawa.com</a>	DRAWN: <b>J. MATTAS</b> DATE: <b>3-30-05</b>	TITLE: <b>E7 DIMENSION DRAWING</b>
UNITS: <b>IN[mm]</b>	SCALE: <b>BY VIEW</b>		CHECKED: <b>M. RUCINSKI</b> DATE: <b>5-3-05</b>	DATE: <b>5-3-05</b>
		TECH: <b>J. CAIRO</b> DATE: <b>3-31-05</b>	DATE: <b>3-31-05</b>	<b>NEMA TYPE 1/IP20 ENCLOSURE</b>
		APPROVED: <b>T. SASADA</b> DATE: <b>6-6-05</b>	DATE: <b>6-6-05</b>	<b>E7U2045</b>
		ORIGINAL DESIGN: -	DATE: -	SIZE: <b>A</b> REVISION: <b>R00</b> PAGE: <b>3 of 3</b>
		DRAWING #: <b>DD.E7.FR8.N1.01</b>		