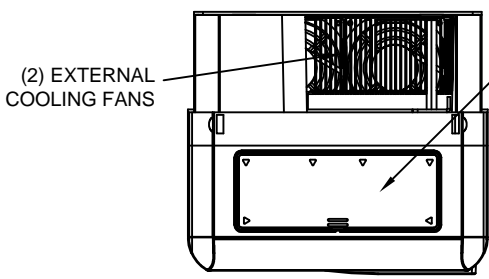


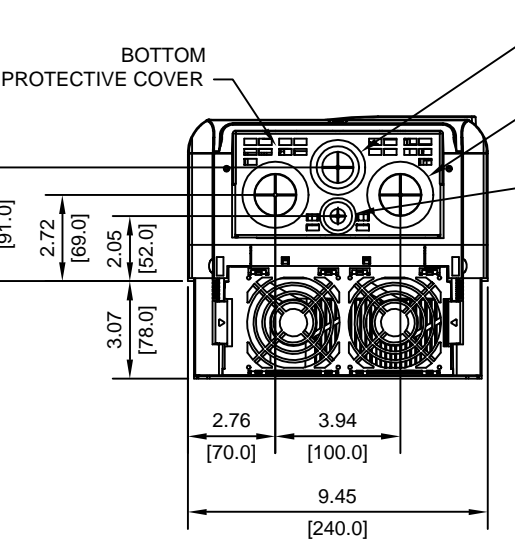
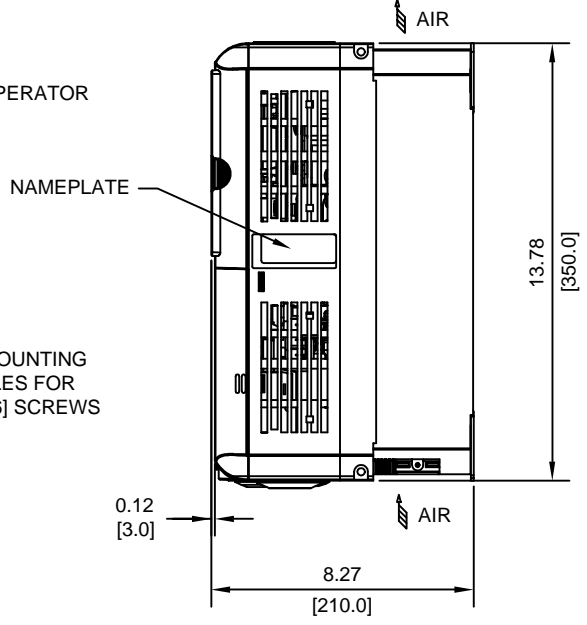
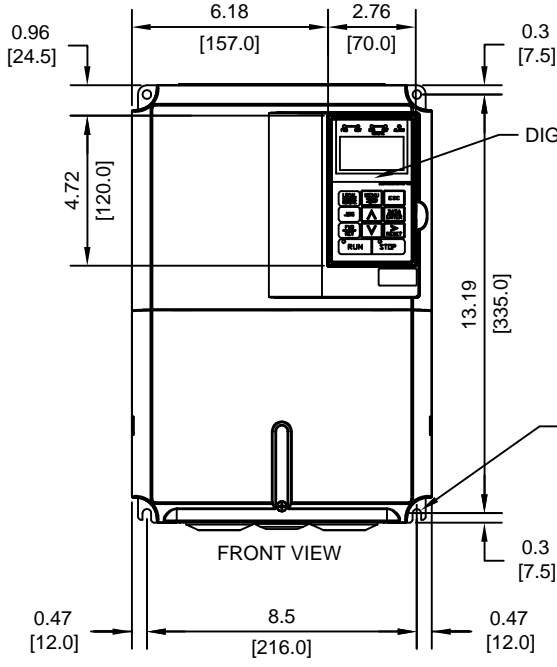
1 2 3 4 5 6 7 8

A
B
C
D
E
F
G
H
I
J



TOP PROTECTIVE COVER

NOTE:
PROTECTIVE COVERS ARE FACTORY INSTALLED TO THE TOP AND BOTTOM OF THE DRIVE TO MEET IP20 & NEMA TYPE 1 REQUIREMENTS, RESULTING IN AN AMBIENT TEMPERATURE RATING OF 104F(40C). REMOVE THESE COVERS WHEN OPERATING THE DRIVE WITHIN A PANEL TO OBTAIN THE MAXIMUM SURROUNDING AIR TEMPERATURE RATING OF 113F(45C). REMOVING THESE COVERS RESULTS IN AN ENCLOSURE RATING OF IP00.



Ø1.38 [35] HOLE WITH RUBBER BUSHING

(2)-Ø1.73 [44] HOLE WITH RUBBER BUSHING

Ø0.87 [22] HOLE WITH RUBBER BUSHING

MODEL #	VOLTAGE (VAC)	OUTPUT CURRENT (A)		WEIGHT LBS (Kg)	HEAT LOSS (W)		
		ND2	HD		INT	EXT	TOTAL
2015	208/240	59.4	58.0	24.2 (11.0)	182	416	598
4018	480	40.0	39.0	22.0 (10.0)	201	389	590

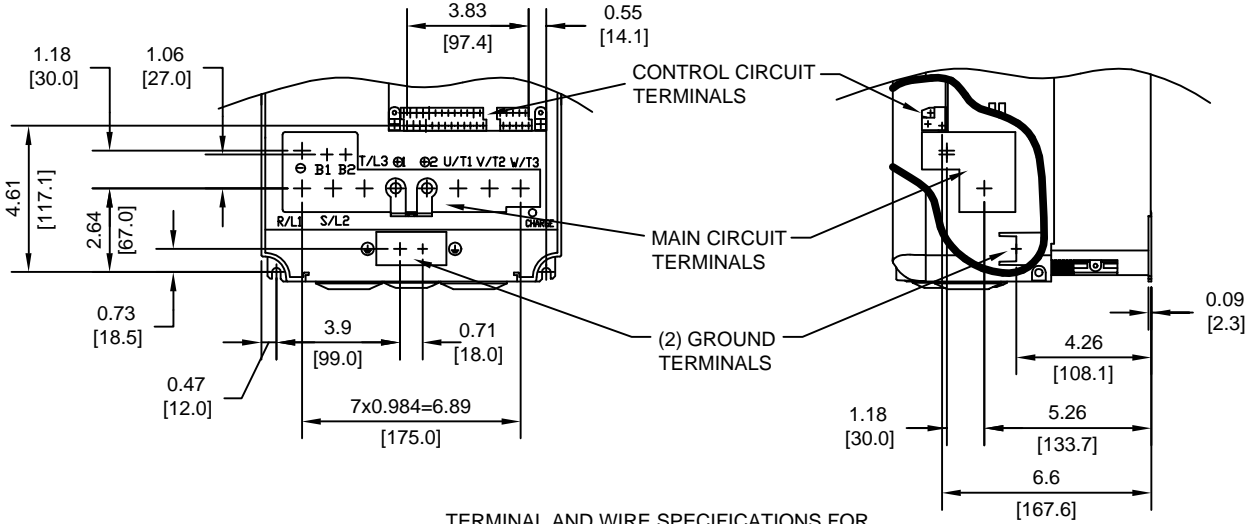
ND2=NORMAL DUTY 2 HD=HEAVY DUTY

INT=INTERNAL COMPONENTS EXT=EXTERNAL HEATSINK

FOR ADDITIONAL DETAILS AND SPECIFICATIONS, CONSULT MANUAL

TOLERANCES/REFERENCES: - - - - -	 YASKAWA A World of Automation Solutions™ YASKAWA ELECTRIC AMERICA, INC. Corporate Headquarters 2121 Norman Drive South Waukegan, IL 60085 1-800-YASKAWA http://www.yaskawa.com	DRAWN: J. MATTAS	DATE: 4-28-03	TITLE: F7 DIMENSION DRAWING		
		CHECKED: M. RUCINSKI	DATE: 5-28-03	FRAME SIZE 4A		
		TECH: J. CAIRO	DATE: 4-30-03	NEMA TYPE 1/IP20 AND IP00		
		APPROVED: T. SASADA	DATE: 5-28-03	F7U2015, 4018		
UNITS: IN[mm]	SCALE: 1:6	ORIGINAL DESIGN: -	DATE: -	SIZE A	REVISION A	PAGE 1 of 2
		DRAWING #: DD.F7.FR4A.N1.01				

TERMINAL AND WIRING DETAILS (SCALE 1:6)

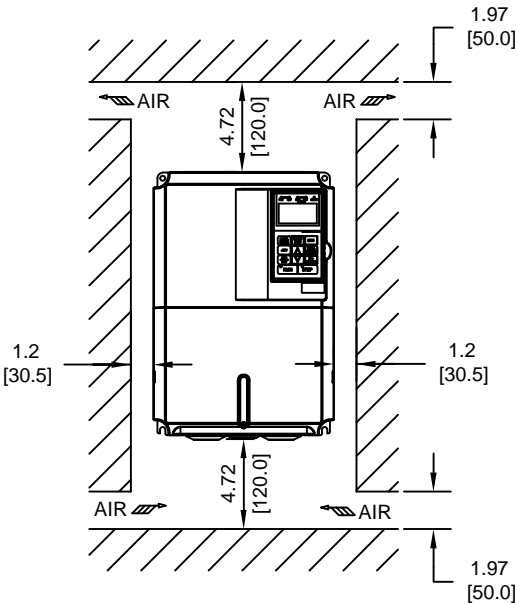


TERMINAL AND WIRE SPECIFICATIONS FOR MAIN CIRCUIT AND GROUND

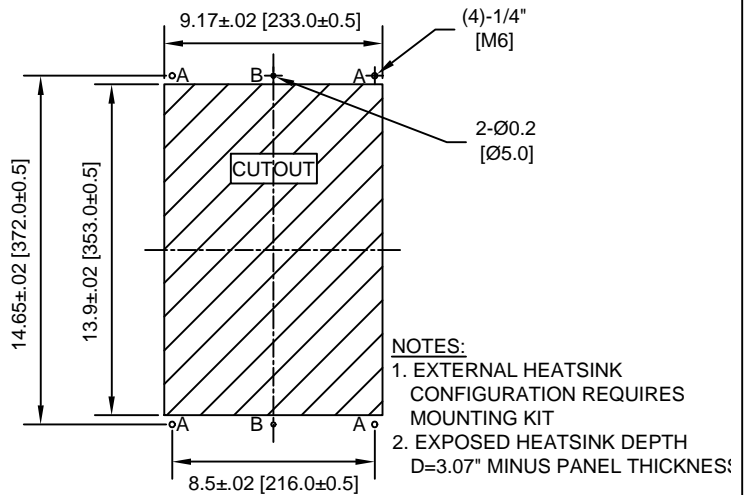
MODEL # CIMR-F7U	TERMINAL SYMBOL	TERMINAL SCREW	CLAMPING TORQUE lb.in.(N.m.)	WIRE RANGE AWG(mm ²)
2015	R/L1, S/L2, T/L3, Ⓞ, ⊕1, ⊕2, U/T1, V/T2, W/T3	M6	35.2 TO 44.0 (4.0 TO 5.0)	8-1 (8-50)
	B1, B2	M5	20.4 TO 22 (2.3 TO 2.5)	12-6 (3.5-14)
	Ⓞ	M6	35.2 TO 44.0 (4.0 TO 5.0)	SEE NOTE
4018	R/L1, S/L2, T/L3, Ⓞ, ⊕1, ⊕2, U/T1, V/T2, W/T3	M6	35.2 TO 44.0 (4.0 TO 5.0)	8-1 (8-50)
	B1, B2	M5	20.4 TO 22 (2.3 TO 2.5)	12-6 (3.5-14)
	Ⓞ	M6	35.2 TO 44.0 (4.0 TO 5.0)	SEE NOTE

NOTE: REFER TO APPLICABLE CODES FOR PROPER WIRE TYPE AND SIZE

MINIMUM INSTALLATION CLEARANCES (SCALE 1:10)



PANEL CUTOUT FOR EXTERNAL HEATSINK MOUNTING CONFIGURATION (SCALE 1:8)



FOR ADDITIONAL DETAILS AND SPECIFICATIONS, CONSULT MANUAL

TOLERANCES/REFERENCES: - - - - -	<p>YASKAWA A World of Automation Solutions™</p> <p>YASKAWA ELECTRIC AMERICA, INC. Corporate Headquarters 2121 Norman Drive South Waukegan, IL 60085 1-800-YASKAWA http://www.yaskawa.com</p>	DRAWN: J. MATTAS DATE: 4-28-03	TITLE: F7 DIMENSION DRAWING FRAME SIZE 4A NEMA TYPE 1/IP20 AND IP00 F7U2015, 4018
		CHECKED: M. RUCINSKI DATE: 5-28-03	TECH: J. CAIRO DATE: 4-30-03
UNITS: IN[mm]	SCALE: BY VIEW	ORIGINAL DESIGN: -	DRAWING #: DD.F7.FR4A.N1.01