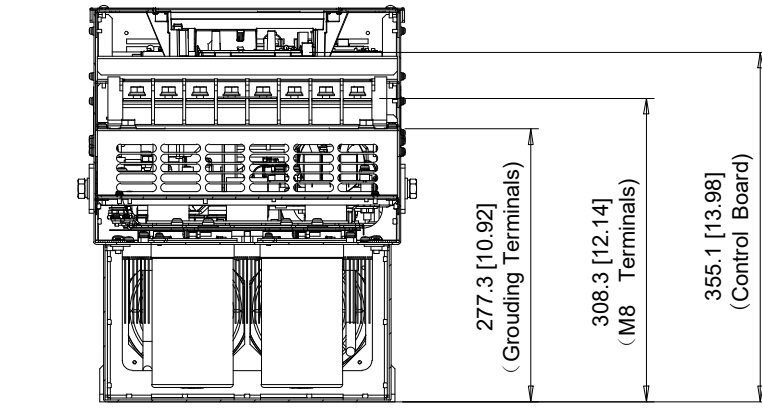
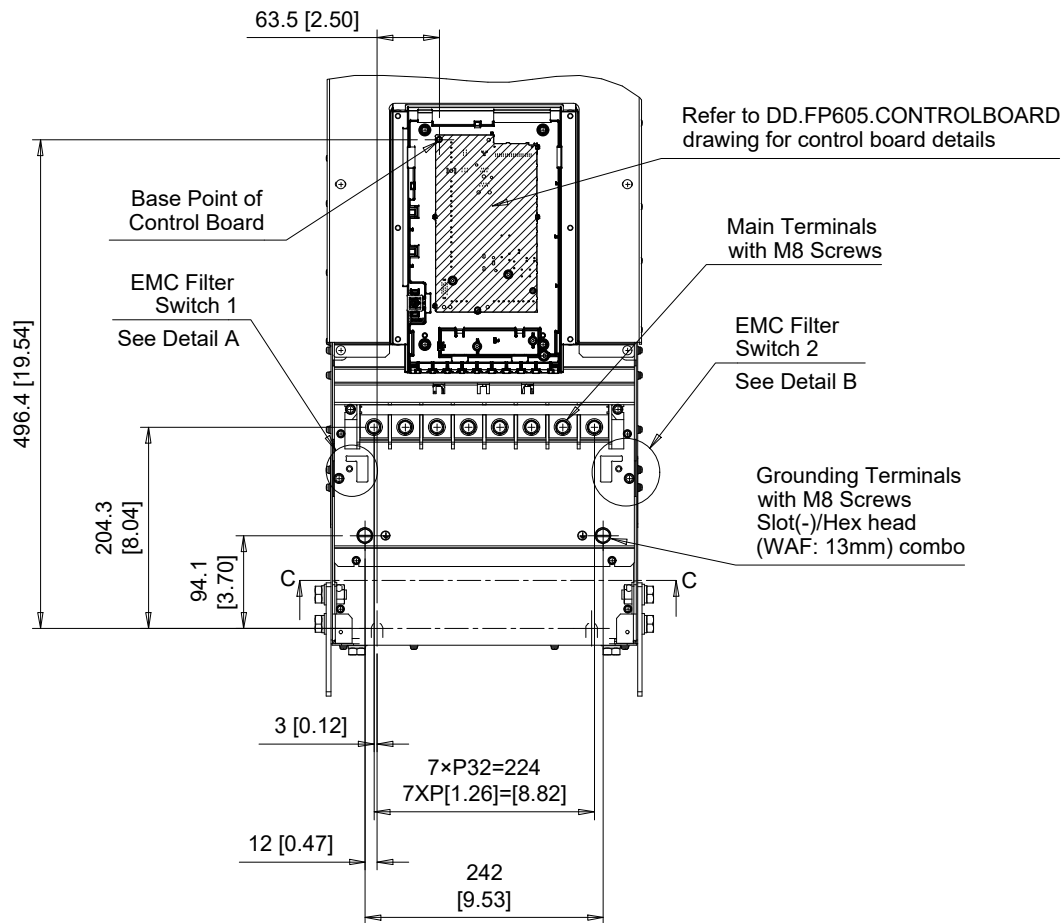


C/C: FP65□	INPUT VOLTAGE 3-PHASE (VAC)	WEIGHT Kg (lb)		COOLING FANS
		STANDARD	WITH EMC FILTER	
2143□□□	200 TO 240	71 (156.5)	74 (163.1)	2
2169□□□	200 TO 240	74 (163.1)	76 (167.6)	2
4156□□□	380 TO 480	76 (167.6)	78 (172.0)	2

□ denotes A-Z

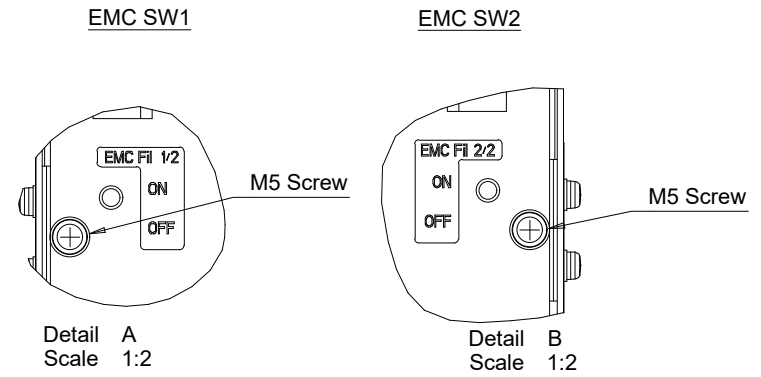
<b>YASKAWA</b>		DRWN. J. MATTAS	3-8-21	TITLE FP605 DIMENSION DRAWING FRAME SIZE 6 IP20/UL TYPE 1 ENCLOSURE	SIZE A	PAGE 1 OF 3	REV <b>0</b>
	UNITS MM [IN]	CHKD. J. PIOTROWSKI	3-30-22		DWG.NO.		
	SCALE 1:10	TECH. L. UDDIN	4-16-22		<b>DD.FP605.FR6.T1</b>		
	APRV. J. CAIRO	4-21-22					



Section C-C

**EMC FILTER SWITCHES**

Note: EMC filter switches enabled only on models with built-in EMC filter



C/C:	TERMINAL SYMBOL	WIRE RANGE AWG (mm <sup>2</sup> )	TERMINAL SCREW	CLAMPING TORQUE N.m. (lb.in.)
FP65□	R/L1, S/L2, T/L3	6 - 250 (16 - 120)	M8	15 (133)
2143□□□	U/T1, V/T2, W/T3	6 - 250 (16 - 120)	M8	15 (133)
2169□□□	-, +1	6 - 250 (16 - 120)	M8	15 (133)
4156□□□	⊕	8 - 2/0 (10 - 70)	M8	9 - 11 (79.7 - 97.4)

□ Denotes A-Z

Note: Refer to applicable codes and standards for proper wire type and size.



UNITS MM [IN]  
SCALE 1:8

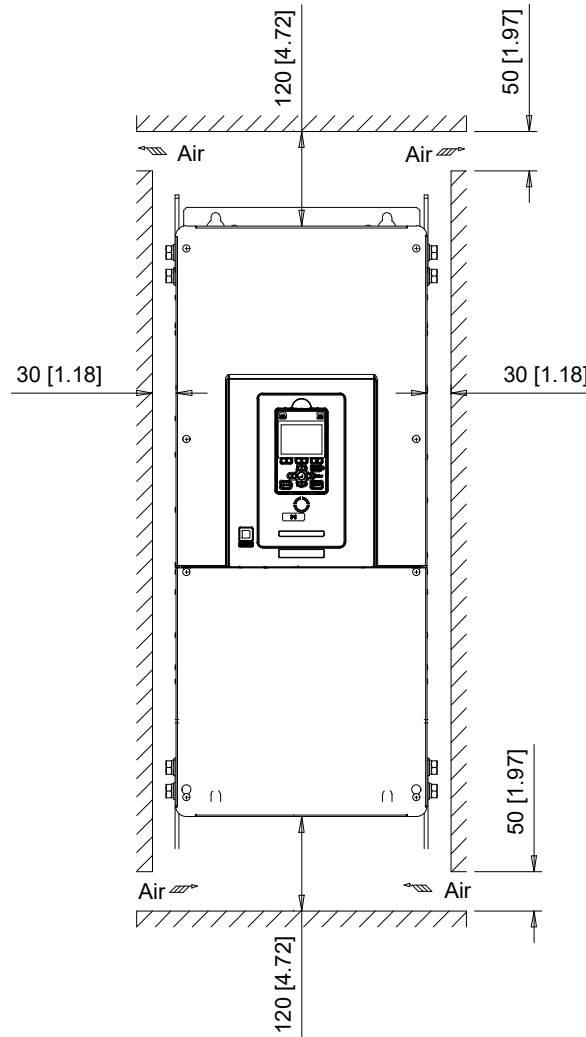
DRWN. J. MATTAS 3-8-21  
CHKD. J. PIOTROWSKI 3-30-22  
TECH. L. UDDIN 4-16-22  
APRV. J. CAIRO 4-21-22

TITLE  
FP605 DIMENSION DRAWING  
FRAME SIZE 6  
IP20/UL TYPE 1 ENCLOSURE

SIZE A PAGE 2 OF 3  
DWG.NO. DD.FP605.FR6.T1

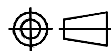
REV 0

Minimum Installation Clearances



Note:  
For alternate mounting configurations, consult manual.

**YASKAWA**



UNITS MM [IN]  
SCALE 1:10

DRWN.	J. MATTAS	3-8-21
CHKD.	J. PIOTROWSKI	3-30-22
TECH.	L. UDDIN	4-16-22
APRV.	J. CAIRO	4-21-22

TITLE  
FP605 DIMENSION DRAWING  
FRAME SIZE 6  
IP20/UL TYPE 1 ENCLOSURE

SIZE A	PAGE 3 OF 3
DWG.NO. DD.FP605.FR6.T1	

REV 0
----------