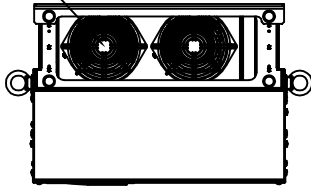
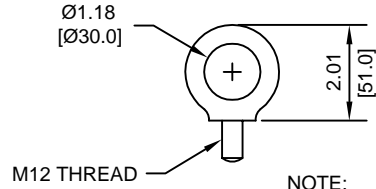


(2) EXTERNAL COOLING FANS

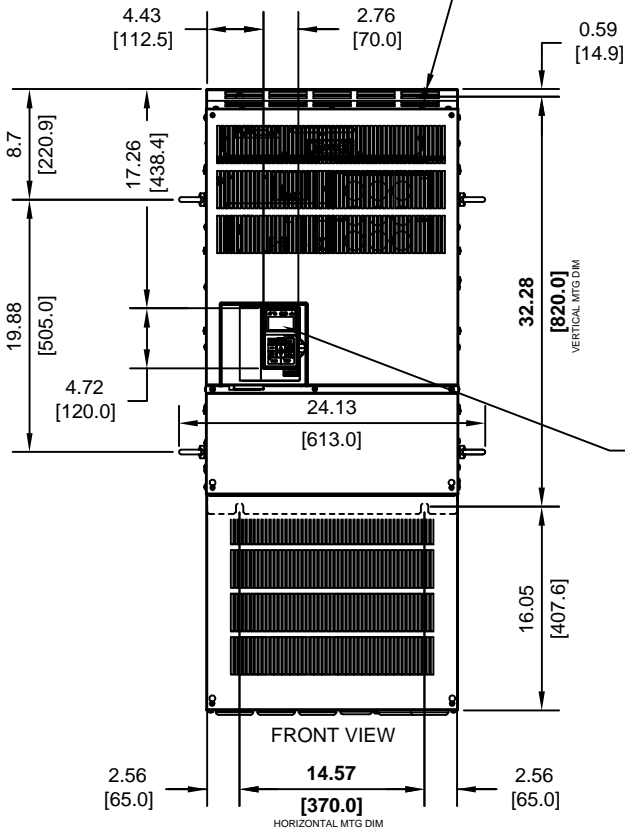


LIFTING AND EYEBOLT DETAILS



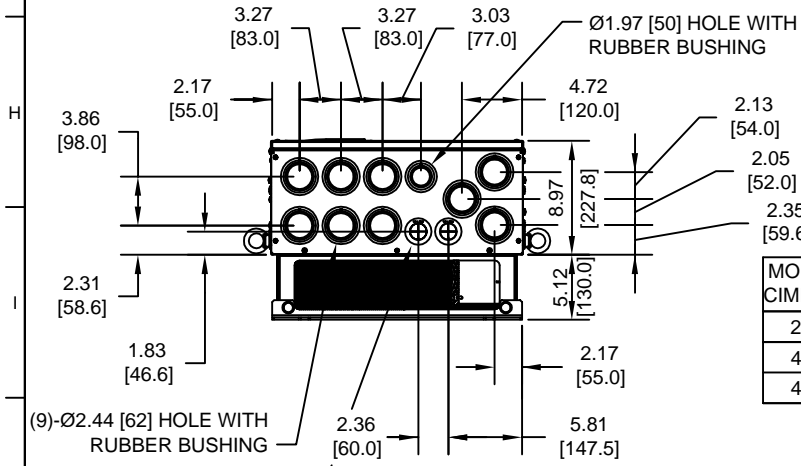
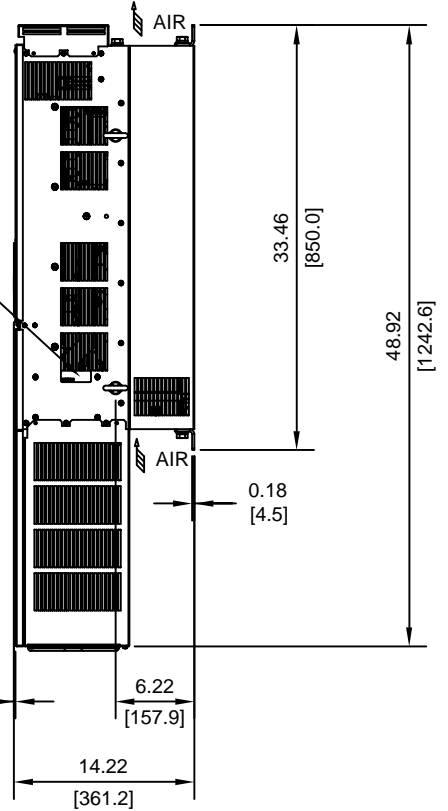
NOTE:
SPREADER BAR REQUIRED TO AVOID DAMAGE DURING LIFTING

(4)-MOUNTING HOLES FOR 1/2" [M12] SCREWS



NAMEPLATE

DIGITAL OPERATOR



MODEL #	VOLTAGE (VAC)	OUTPUT CURRENT (A)	WEIGHT LBS (Kg)	HEAT LOSS (W)		
				INT	EXT	TOTAL
2075	208/230	300	251 (114)	823	2009	2832
4090	480	195	279 (127)	762	1928	2690
4110		240	301 (137)	928	2299	3227

INT=INTERNAL COMPONENTS
EXT=EXTERNAL HEATSINK

FOR ADDITIONAL DETAILS AND SPECIFICATIONS, CONSULT MANUAL

TOLERANCES/REFERENCES:

UNITS: IN[mm] SCALE: 1:15

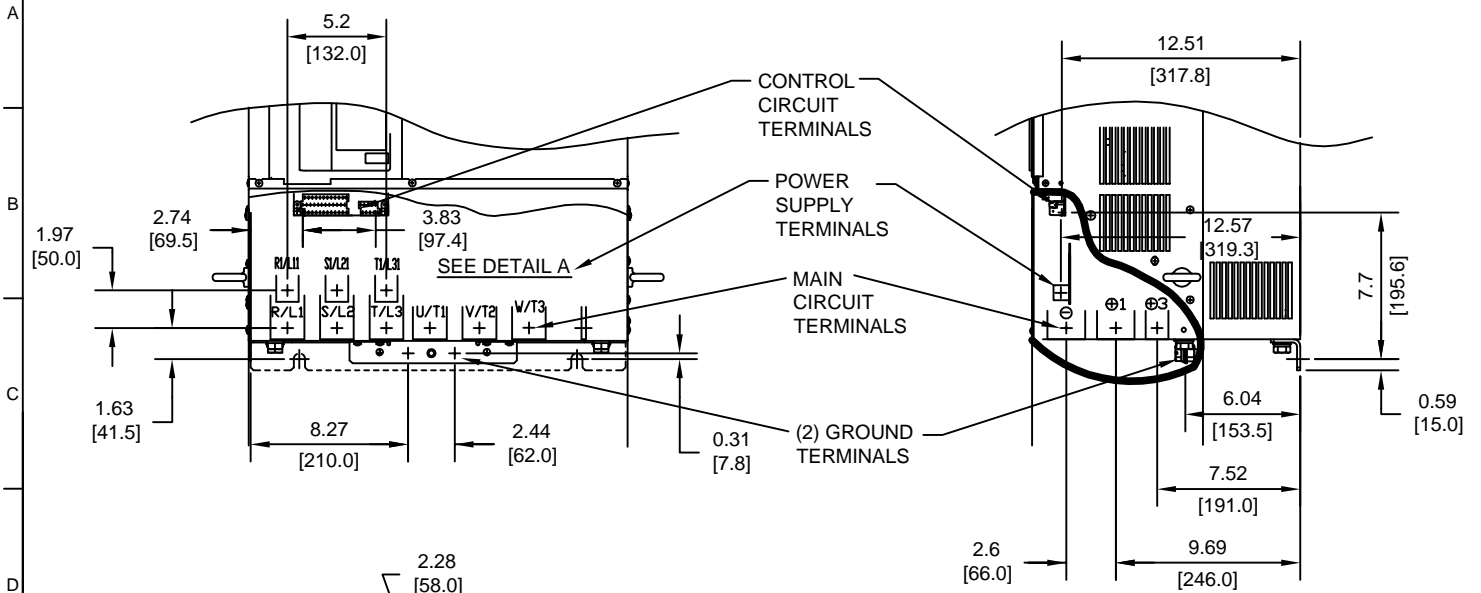
YASKAWA
A World of Automation Solutions™

YASKAWA ELECTRIC AMERICA, INC.
Corporate Headquarters
2121 Norman Drive South
Waukegan, IL 60085
1-800-YASKAWA
http://www.yaskawa.com

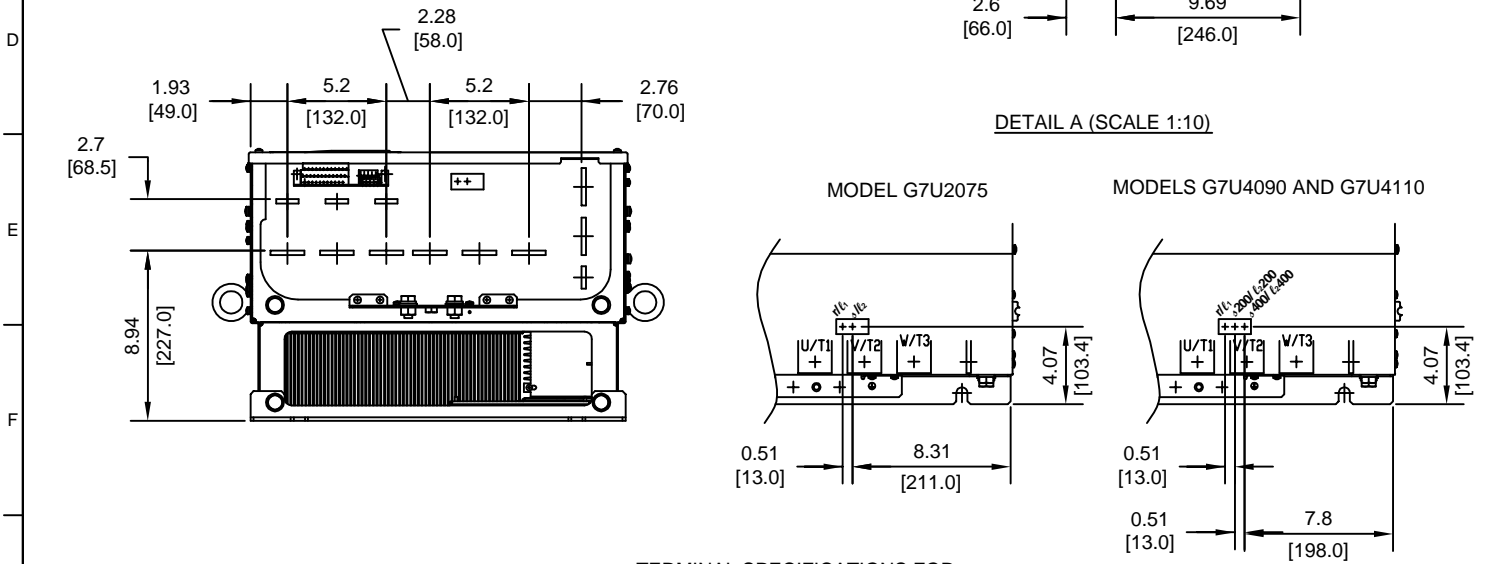
DRAWN: J. MATTAS	DATE 3-1-04
CHECKED: E. KU	DATE 4-4-04
TECH: J. CAIRO	DATE 4-2-04
APPROVED: T. SASADA	DATE 4-7-04
ORIGINAL DESIGN: -	DATE -

TITLE: G7 DIMENSION DRAWING FRAME SIZE 11 NEMA TYPE 1/IP20 ENCLOSURE G7U2075, 4090 TO 4110		
SIZE A	REVISION -	PAGE 1 of 3
DRAWING #: DD.G7.FR11.N1.01		

TERMINAL AND WIRING DETAILS (SCALE 1:10)



DETAIL A (SCALE 1:10)



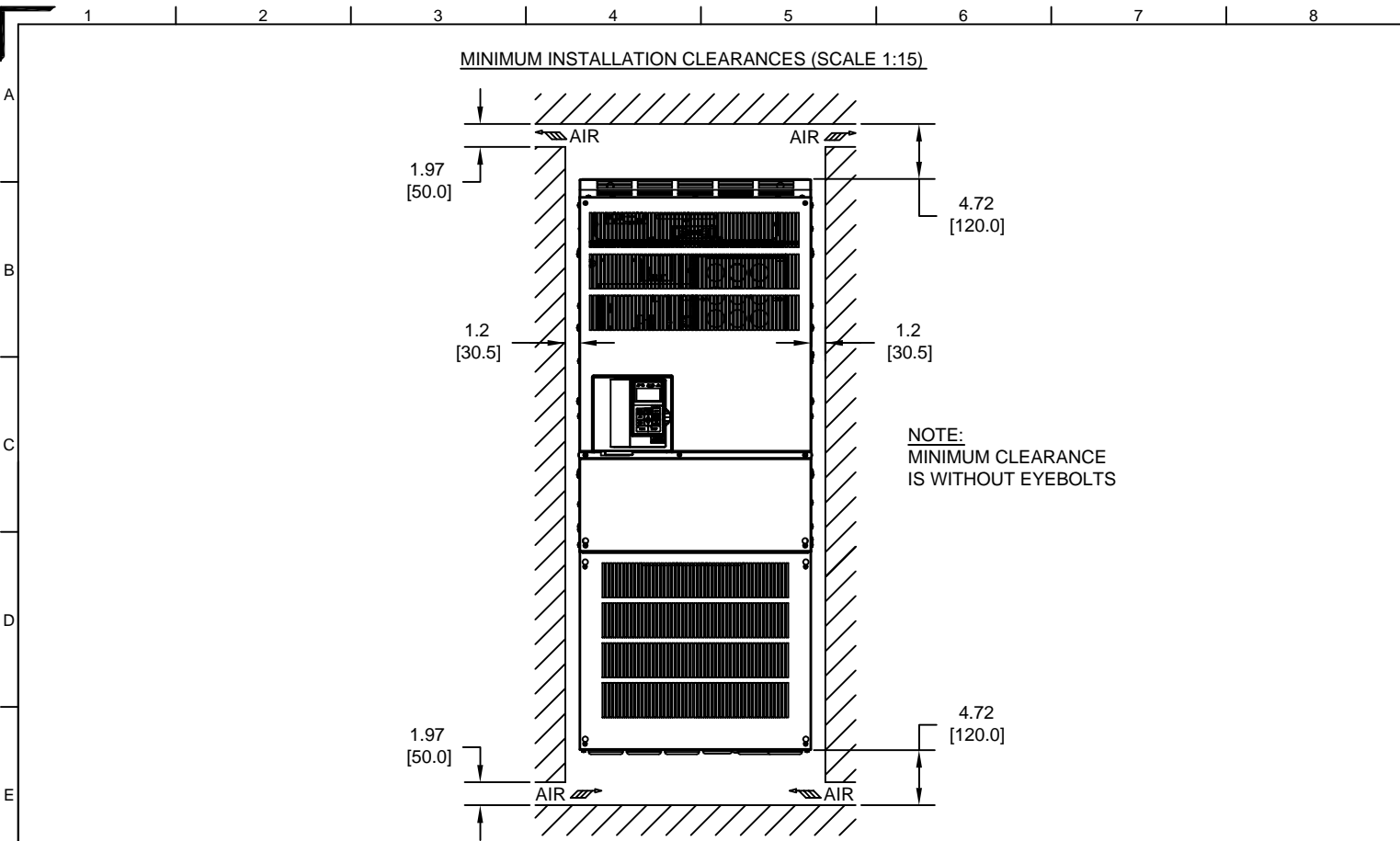
TERMINAL SPECIFICATIONS FOR MAIN CIRCUIT AND GROUND

MODEL # CIMR-G7U	TERMINAL SYMBOL	TERMINAL SCREW	CLAMPING TORQUE lb.in.(N.m.)
2075	R/L1, S/L2, T/L3, ⊙ ⊕1 ⊕, U/T1, V/T2, W/T3, R1/L11, S1/L21, T1/L31	M12	276 TO 345 (31.4 TO 39.2)
	⊕3	M8	78.0 TO 95.0 (8.8 TO 10.8)
	rℓ1, sℓ2	M4	11.4 TO 12.3 (1.3 TO 1.4)
4090	R/L1, S/L2, T/L3, ⊙ ⊕1, U/T1, V/T2, W/T3, R1/L11, S1/L21, T1/L31	M10	155 TO 198 (17.6 TO 22.5)
	⊕3	M8	78.0 TO 95.0 (8.8 TO 10.8)
	⊕	M12	276 TO 345 (31.4 TO 39.2)
4110	rℓ1, s200/ℓ2200, s400/ℓ2400	M4	11.4 TO 12.3 (1.3 TO 1.4)
	R/L1, S/L2, T/L3, ⊙ ⊕1, U/T1, V/T2, W/T3, R1/L11, S1/L21, T1/L31	M10	155 TO 198 (17.6 TO 22.5)
	⊕3	M8	78.0 TO 95.0 (8.8 TO 10.8)
4110	⊕	M12	276 TO 345 (31.4 TO 39.2)
	rℓ1, s200/ℓ2200, s400/ℓ2400	M4	11.4 TO 12.3 (1.3 TO 1.4)

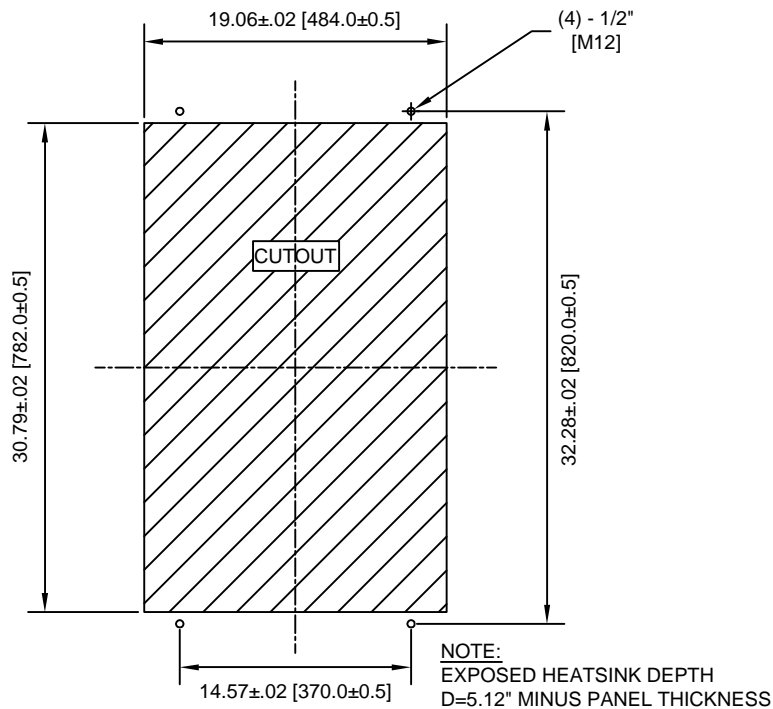
NOTE: REFER TO APPLICABLE CODES FOR PROPER WIRE TYPE AND SIZE

FOR ADDITIONAL DETAILS AND SPECIFICATIONS, CONSULT MANUAL


TOLERANCES/REFERENCES: - - - -	<p>YASKAWA A World of Automation Solutions™</p> <p>YASKAWA ELECTRIC AMERICA, INC. Corporate Headquarters 2121 Norman Drive South Waukegan, IL 60085 1-800-YASKAWA http://www.yaskawa.com</p>	DRAWN: J. MATTAS	DATE 3-1-04	TITLE: G7 DIMENSION DRAWING
		CHECKED: E. KU	DATE 4-4-04	FRAME SIZE 11
		TECH: J. CAIRO	DATE 4-2-04	NEMA TYPE 1/IP20 ENCLOSURE G7U2075, 4090 TO 4110
		APPROVED: T. SASADA	DATE 4-7-04	SIZE A REVISION - PAGE 2 of 3
UNITS: IN[mm]	SCALE: BY VIEW	ORIGINAL DESIGN: -	DATE -	DRAWING #: DD.G7.FR11.N1.01



PANEL CUTOUT FOR EXTERNAL HEATSINK MOUNTING CONFIGURATION (SCALE 1:12)



FOR ADDITIONAL DETAILS AND SPECIFICATIONS, CONSULT MANUAL

TOLERANCES/REFERENCES: -		 YASKAWA <i>A World of Automation Solutions™</i> YASKAWA ELECTRIC AMERICA, INC. Corporate Headquarters 2121 Norman Drive South Waukegan, IL 60085 1-800-YASKAWA http://www.yaskawa.com	DRAWN: J. MATTAS DATE 3-1-04	TITLE: G7 DIMENSION DRAWING
UNITS: IN[mm]	SCALE: BY VIEW		CHECKED: E. KU DATE 4-4-04	DATE 4-4-04
		TECH: J. CAIRO DATE 4-7-04	DATE 4-7-04	SIZE A
		APPROVED: T. SASADA DATE 4-7-04	DATE 4-7-04	REVISION -
		ORIGINAL DESIGN: -	DATE -	PAGE 3 of 3
		DRAWING #: DD.G7.FR11.N1.01		