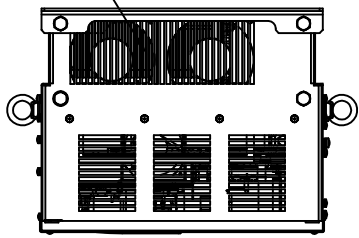
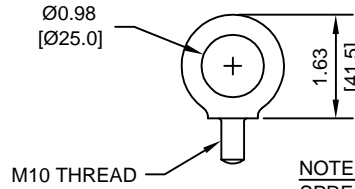


(2) EXTERNAL COOLING FANS

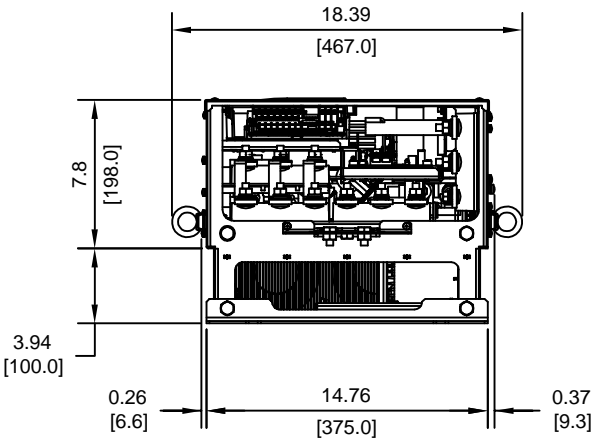
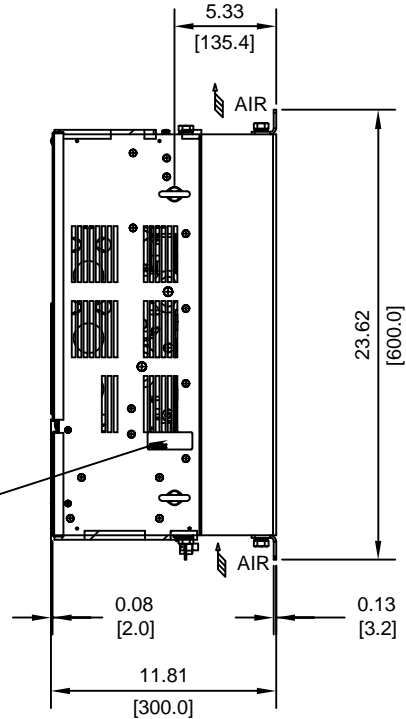
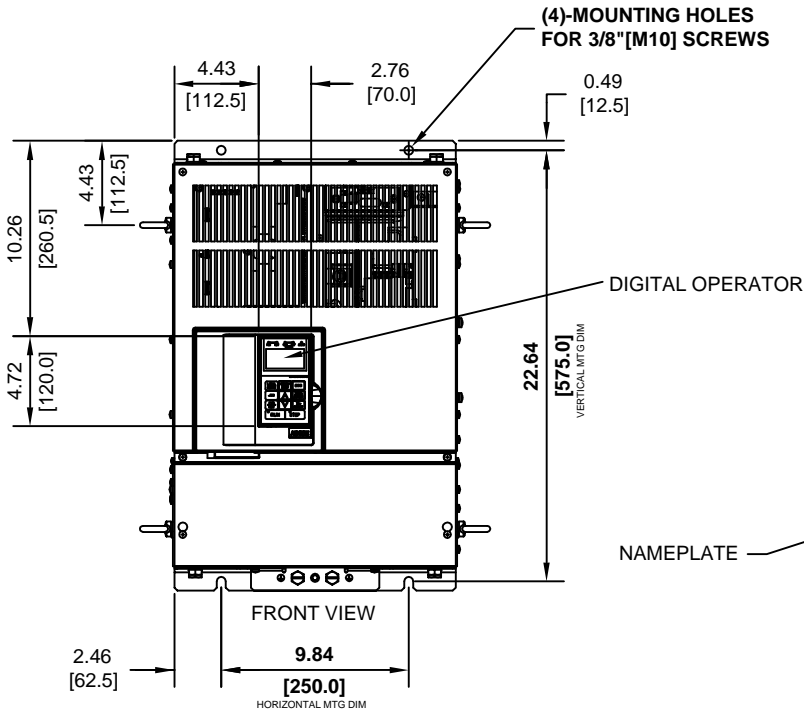


LIFTING AND EYEBOLT DETAILS



NOTE:  
SPREADER BAR REQUIRED TO AVOID DAMAGE DURING LIFTING

(4)-MOUNTING HOLES FOR 3/8" [M10] SCREWS



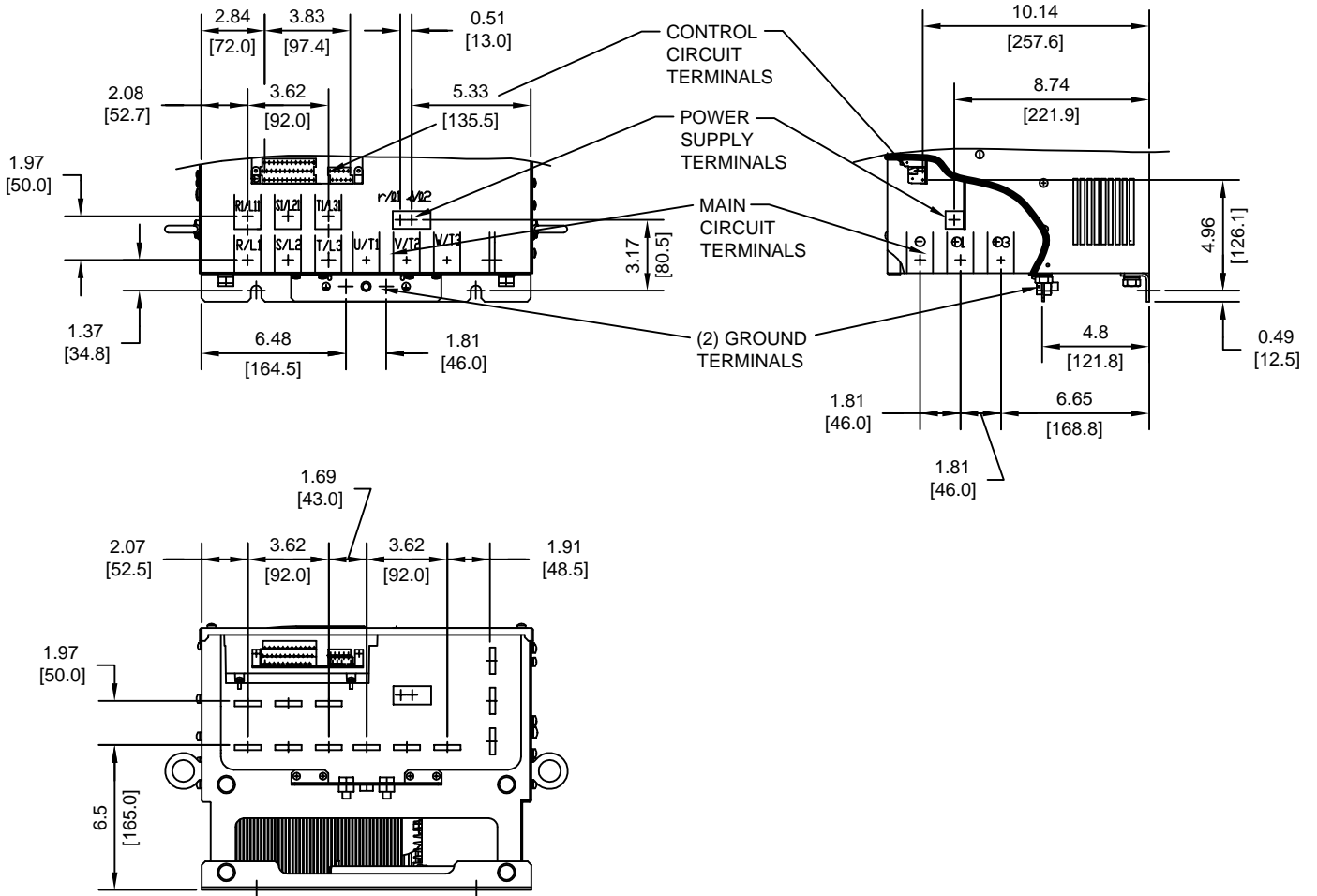
MODEL #	VOLTAGE (VAC)	OUTPUT CURRENT (A)	WEIGHT LBS (Kg)	HEAT LOSS (W)		
				INT	EXT	TOTAL
CIMR-G7U	208/230	130	125 (57)	362	878	1240

INT=INTERNAL COMPONENTS  
EXT=EXTERNAL HEATSINK

FOR ADDITIONAL DETAILS AND SPECIFICATIONS, CONSULT MANUAL

TOLERANCES/REFERENCES: -	 <b>YASKAWA</b> <i>A World of Automation Solutions™</i> <b>YASKAWA ELECTRIC AMERICA, INC.</b> Corporate Headquarters 2121 Norman Drive South Waukegan, IL 60085 1-800-YASKAWA <a href="http://www.yaskawa.com">http://www.yaskawa.com</a>	DRAWN: J. MATTAS	DATE 2-13-04	TITLE: G7 DIMENSION DRAWING
		CHECKED: E. KU	DATE 4-4-04	FRAME SIZE 7
		TECH: J. CAIRO	DATE 3-30-04	IP00 ENCLOSURE
		APPROVED: T. SASADA	DATE 4-7-04	G7U2030
UNITS: IN[mm]	SCALE: 1:10	ORIGINAL DESIGN: -	DATE -	SIZE: A REVISION: - PAGE: 1 of 3 DRAWING #: DD.G7.FR7.IP00.01

TERMINAL AND WIRING DETAILS (SCALE 1:8)



TERMINAL SPECIFICATIONS FOR  
MAIN CIRCUIT AND GROUND

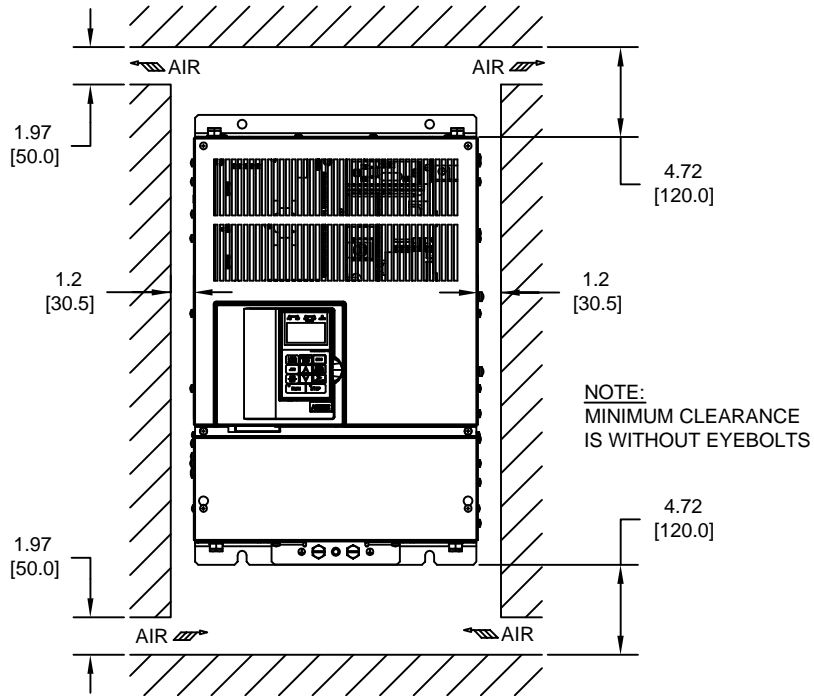
MODEL #	TERMINAL SYMBOL	TERMINAL SCREW	CLAMPING TORQUE lb.in.(N.m.)
2030	R/L1, S/L2, T/L3, ⊕, ⊕1, R1/L11, S1/L21, T1/L31, U/T1, V/T2, W/T3, ⊕	M10	155 TO 198 (17.6 TO 22.5)
	⊕3	M8	77.4 TO 95.0 (8.8 TO 10.8)
	r/l1, s/l2	M4	11.4 TO 12.3 (1.3 TO 1.4)

NOTE: REFER TO APPLICABLE CODES FOR PROPER WIRE TYPE AND SIZE

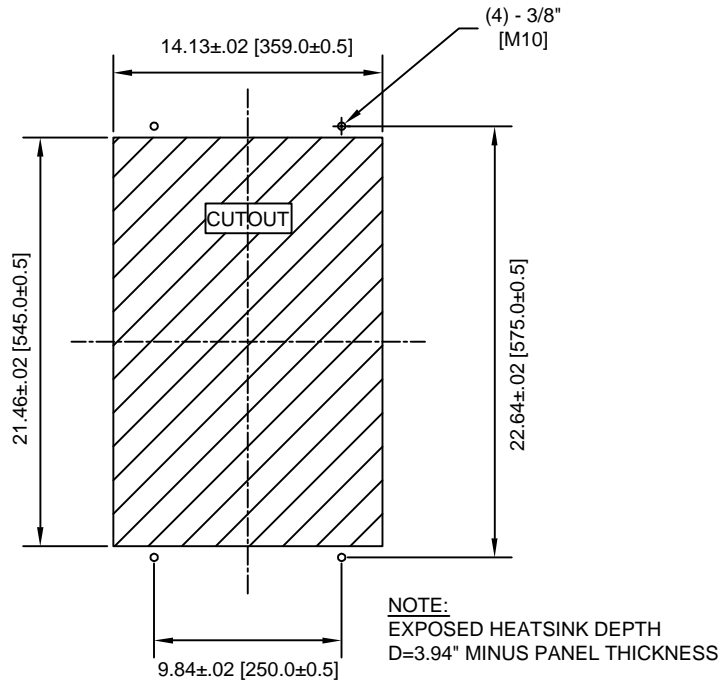
FOR ADDITIONAL DETAILS AND SPECIFICATIONS, CONSULT MANUAL

TOLERANCES/REFERENCES: -		<p><b>YASKAWA</b> A World of Automation Solutions™</p> <p><b>YASKAWA ELECTRIC AMERICA, INC.</b> Corporate Headquarters 2121 Norman Drive South Waukegan, IL 60085 1-800-YASKAWA http://www.yaskawa.com</p>	DRAWN: J. MATTAS DATE: 2-13-04	TITLE: G7 DIMENSION DRAWING FRAME SIZE 7 IP00 ENCLOSURE G7U2030			
UNITS: IN[mm]			CHECKED: E. KU DATE: 4-4-04	TECH: J. CAIRO DATE: 3-30-04	SIZE A	REVISION -	PAGE 2 of 3
SCALE: BY VIEW			APPROVED: T. SASADA DATE: 4-7-04	ORIGINAL DESIGN: -	DATE -	DRAWING #: DD.G7.FR7.IP00.01	


MINIMUM INSTALLATION CLEARANCES (SCALE 1:10)



PANEL CUTOUT FOR EXTERNAL HEATSINK MOUNTING CONFIGURATION (SCALE 1:10)



FOR ADDITIONAL DETAILS AND SPECIFICATIONS, CONSULT MANUAL

TOLERANCES/REFERENCES: - - - - - -		 <b>YASKAWA</b> <i>A World of Automation Solutions™</i> <b>YASKAWA ELECTRIC AMERICA, INC.</b> Corporate Headquarters 2121 Norman Drive South Waukegan, IL 60085 1-800-YASKAWA <a href="http://www.yaskawa.com">http://www.yaskawa.com</a>	DRAWN: <b>J. MATTAS</b> DATE: <b>2-13-04</b>	TITLE: <b>G7 DIMENSION DRAWING</b>
UNITS: <b>IN[mm]</b>	SCALE: <b>BY VIEW</b>		CHECKED: <b>E. KU</b> DATE: <b>4-4-04</b>	DATE: <b>4-4-04</b>
		TECH: <b>J. CAIRO</b> DATE: <b>3-30-04</b>	DATE: <b>3-30-04</b>	SIZE <b>A</b>
		APPROVED: <b>T. SASADA</b> DATE: <b>4-7-04</b>	DATE: <b>4-7-04</b>	REVISION -
		ORIGINAL DESIGN: -	DATE: -	PAGE <b>3 of 3</b>
		DRAWING #: <b>DD.G7.FR7.IP00.01</b>		