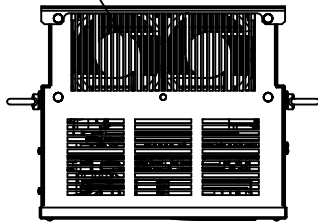
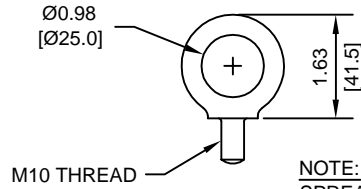


(2) EXTERNAL COOLING FANS

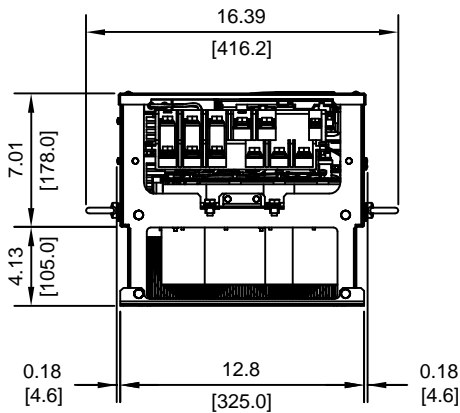
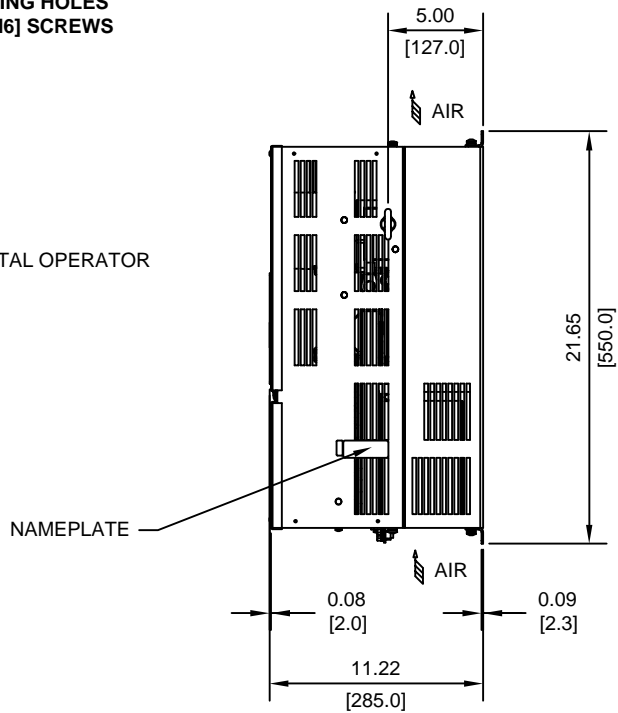
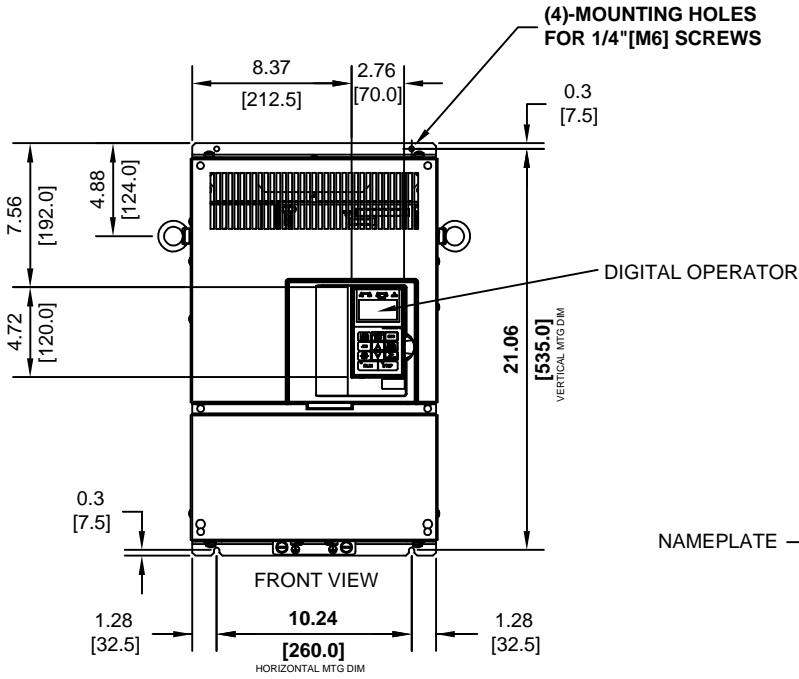


LIFTING AND EYEBOLT DETAILS



NOTE:
SPREADER BAR REQUIRED TO AVOID DAMAGE DURING LIFTING

(4)-MOUNTING HOLES FOR 1/4" [M6] SCREWS



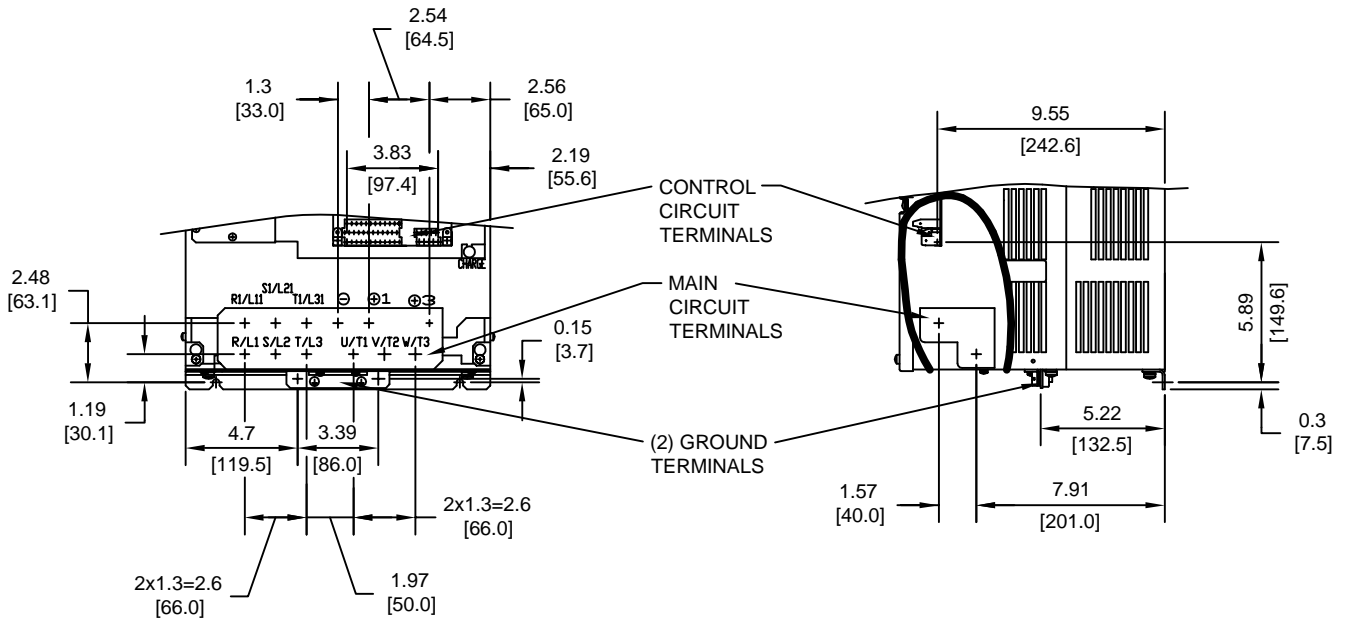
MODEL #	VOLTAGE (VAC)	OUTPUT	WEIGHT	HEAT LOSS (W)		
		CURRENT (A)	LBS (Kg)	INT	EXT	TOTAL
4030	480	65	81 (37)	246	633	879
4037		80	81 (37)	285	737	1022
4045		97	81 (37)	340	929	1269

INT=INTERNAL COMPONENTS
EXT=EXTERNAL HEATSINK

FOR ADDITIONAL DETAILS AND SPECIFICATIONS, CONSULT MANUAL

TOLERANCES/REFERENCES: - - - - -	 YASKAWA <i>A World of Automation Solutions™</i> YASKAWA ELECTRIC AMERICA, INC. Corporate Headquarters 2121 Norman Drive South Waukegan, IL 60085 1-800-YASKAWA http://www.yaskawa.com	DRAWN: J. MATTAS DATE 2-18-04	TITLE: G7 DIMENSION DRAWING			
		CHECKED: E. KU DATE 4-4-04	FRAME SIZE 9			
		TECH: J. CAIRO DATE 4-2-04	IP00 ENCLOSURE			
		APPROVED: T. SASADA DATE 4-7-04	G7U4030 TO 4045			
UNITS: IN[mm]	SCALE: 1:10	ORIGINAL DESIGN: -	DATE -	SIZE A	REVISION -	PAGE 1 of 3
			DRAWING #: DD.G7.FR9.IP00.01			

TERMINAL AND WIRING DETAILS (SCALE 1:8)




TERMINAL AND WIRE SPECIFICATIONS FOR MAIN CIRCUIT AND GROUND

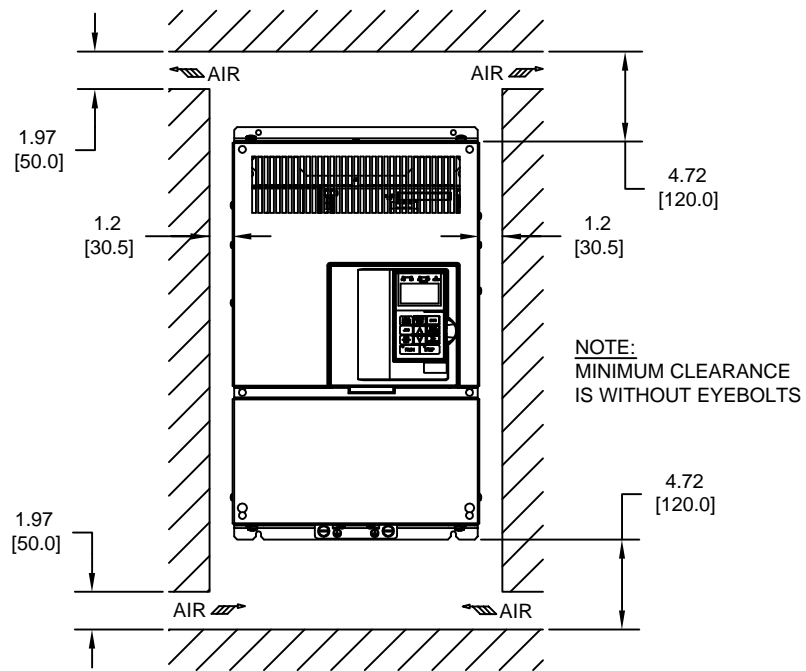
MODEL #	TERMINAL SYMBOL	TERMINAL SCREW	CLAMPING TORQUE lb.in.(N.m.)	WIRE RANGE AWG(mm ²)
4030	R/L1, S/L2, T/L3, U, ⊕1, R1/L11, S1/L21, T1/L31, U/T1, V/T2, W/T3	M8	79.2 TO 88.0 (9.0 TO 10.0)	8-1/0 (8-60)
	⊕3	M6	35.2 TO 44.0 (4.0 TO 5.0)	8-4 (8-22)
	⊕	M8	79.2 TO 88.0 (9.0 TO 10.0)	SEE NOTE
4037	R/L1, S/L2, T/L3, U, ⊕1, R1/L11, S1/L21, T1/L31, U/T1, V/T2, W/T3	M8	79.2 TO 88.0 (9.0 TO 10.0)	8-1/0 (8-60)
	⊕3	M6	35.2 TO 44.0 (4.0 TO 5.0)	8-4 (8-22)
	⊕	M8	79.2 TO 88.0 (9.0 TO 10.0)	SEE NOTE
4045	R/L1, S/L2, T/L3, U, ⊕1, R1/L11, S1/L21, T1/L31, U/T1, V/T2, W/T3	M8	79.2 TO 88.0 (9.0 TO 10.0)	8-1/0 (8-60)
	⊕3	M6	35.2 TO 44.0 (4.0 TO 5.0)	8-4 (8-22)
	⊕	M8	79.2 TO 88.0 (9.0 TO 10.0)	SEE NOTE

NOTE: REFER TO APPLICABLE CODES FOR PROPER WIRE TYPE AND SIZE

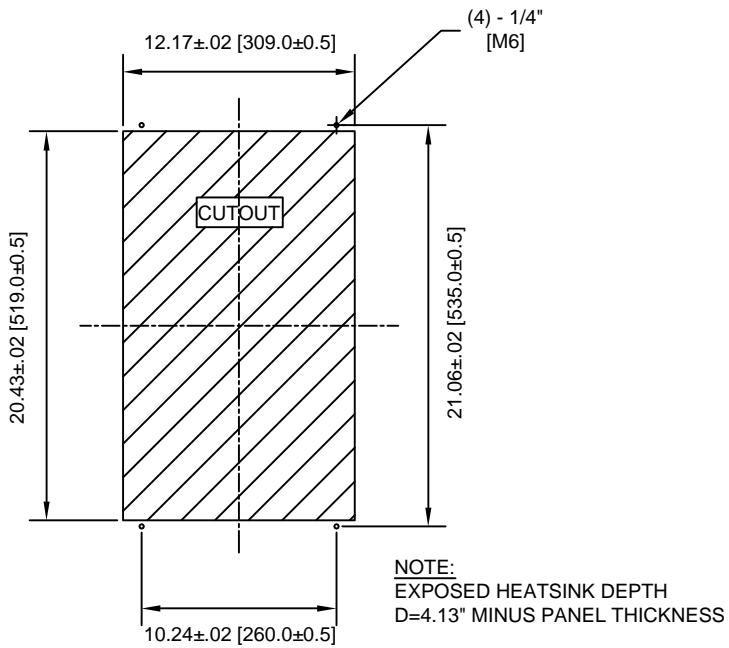
FOR ADDITIONAL DETAILS AND SPECIFICATIONS, CONSULT MANUAL

TOLERANCES/REFERENCES: - - - - - -	 YASKAWA <i>A World of Automation Solutions™</i> YASKAWA ELECTRIC AMERICA, INC. Corporate Headquarters 2121 Norman Drive South Waukegan, IL 60085 1-800-YASKAWA http://www.yaskawa.com	DRAWN: J. MATTAS	DATE: 2-18-04	TITLE: G7 DIMENSION DRAWING		
		CHECKED: E. KU	DATE: 4-4-04	FRAME SIZE 9		
		TECH: J. CAIRO	DATE: 4-2-04	IP00 ENCLOSURE		
		APPROVED: T. SASADA	DATE: 4-7-04	G7U4030 TO 4045		
UNITS: IN[mm]	SCALE: BY VIEW	ORIGINAL DESIGN: -	DATE: -	SIZE: A	REVISION: -	PAGE: 2 of 3
				DRAWING #: DD.G7.FR9.IP00.01		

MINIMUM INSTALLATION CLEARANCES (SCALE 1:10)



PANEL CUTOUT FOR EXTERNAL HEATSINK MOUNTING CONFIGURATION (SCALE 1:10)



FOR ADDITIONAL DETAILS AND SPECIFICATIONS, CONSULT MANUAL

TOLERANCES/REFERENCES: -		<p>YASKAWA A World of Automation Solutions™</p> <p>YASKAWA ELECTRIC AMERICA, INC. Corporate Headquarters 2121 Norman Drive South Waukegan, IL 60085 1-800-YASKAWA http://www.yaskawa.com</p>	DRAWN: J. MATTAS	DATE 2-18-04	TITLE: G7 DIMENSION DRAWING		
UNITS: IN[mm]			SCALE: BY VIEW	CHECKED: E. KU	DATE 4-4-04	FRAME SIZE 9	
			TECH: J. CAIRO	DATE 4-2-04	IP00 ENCLOSURE		
			APPROVED: T. SASADA	DATE 4-7-04	SIZE A	REVISION -	PAGE 3 of 3
			ORIGINAL DESIGN: -	DATE -	DRAWING #: DD.G7.FR9.IP00.01		