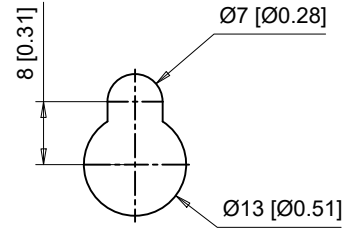
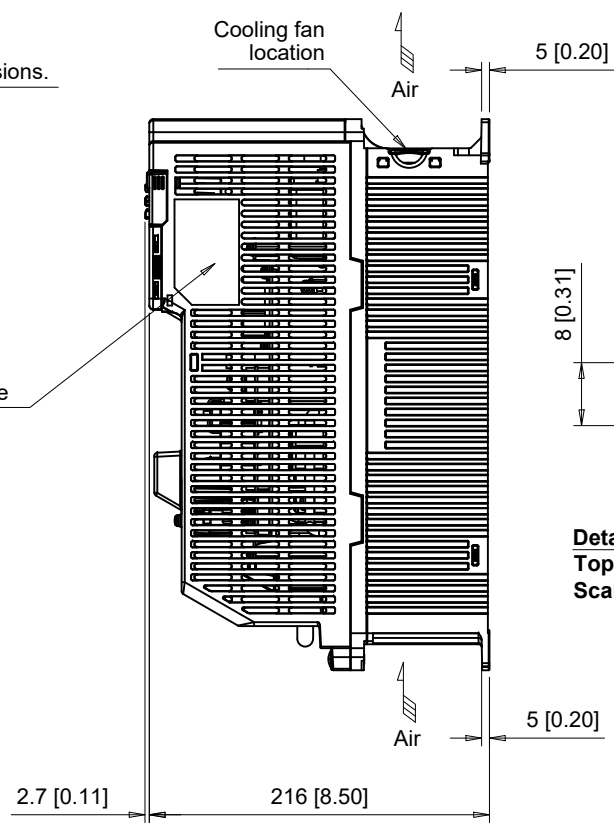
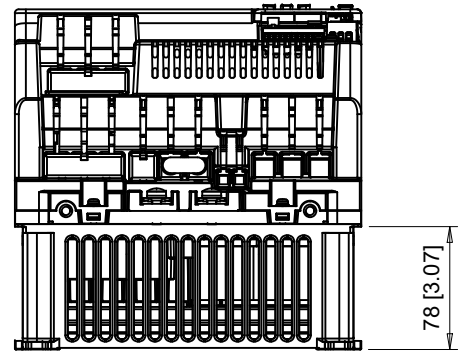


(4) Mounting Holes for M6 [1/4"] Screws. See Detail A for top mounting hole dimensions.



**Detail A**  
 Top mounting hole dimensions  
 Scale 1:1



C/C:	INPUT VOLTAGE (VAC)	WEIGHT Kg (lb)	COOLING FANS
GA50□			
2070□□□	200 TO 240	8.5 (18.7)	2
2082□□□	3-PHASE	9.0 (19.9)	2

□ denotes A-Z

**YASKAWA**

UNITS MM [IN]  
 SCALE 1:5

DRWN.	J. MATTAS	7-1-19
CHKD.	J. PIOTROWSKI	8-7-19
TECH.	L. UDDIN	9-8-19
APRV.	J. CAIRO	9-18-19

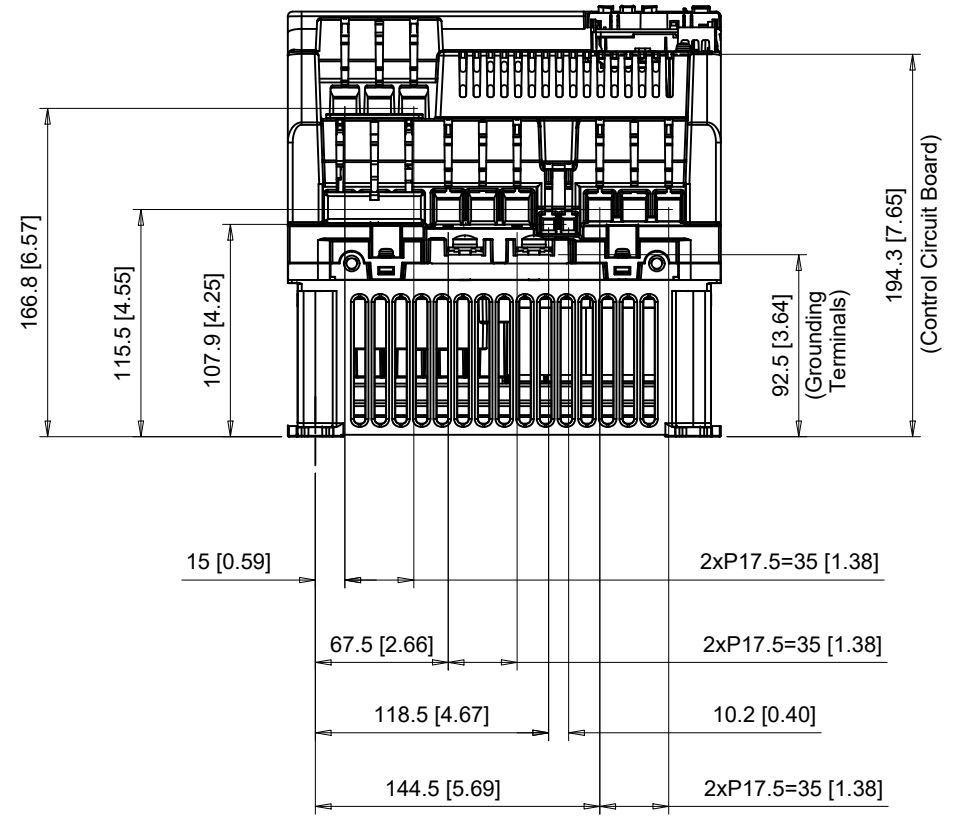
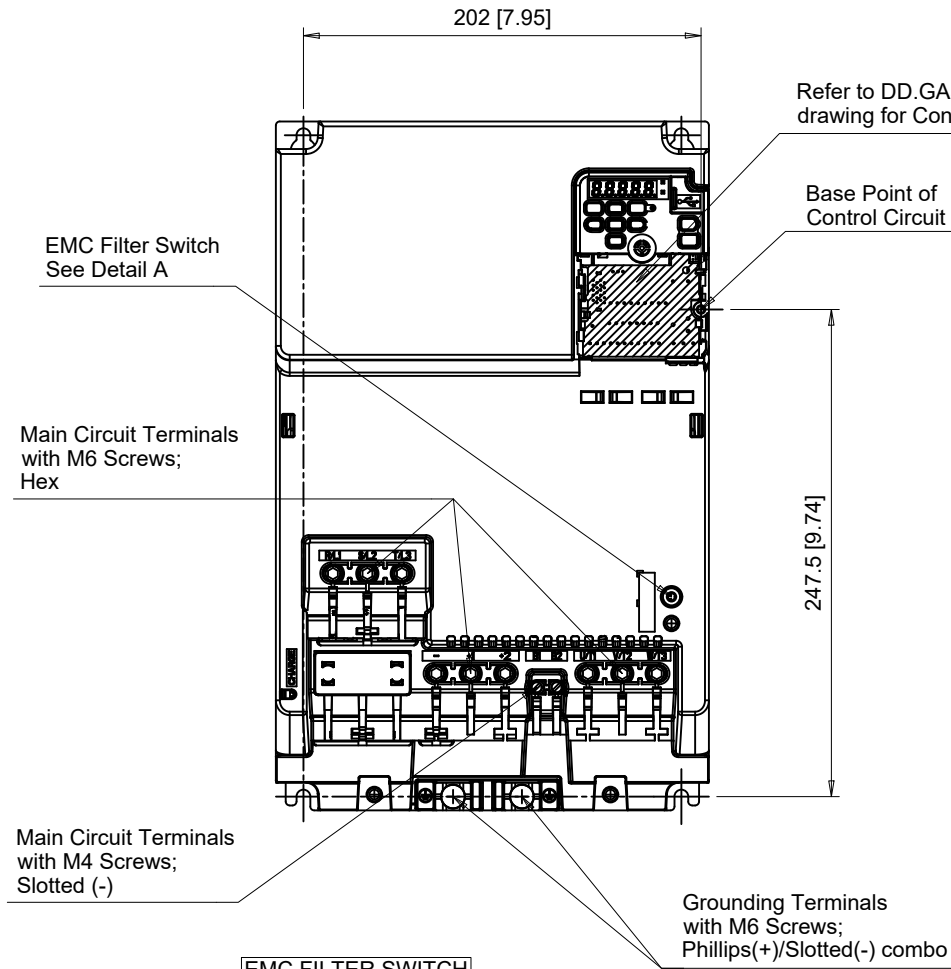
TITLE  
 GA500 DIMENSION DRAWING  
 FRAME SIZE 7  
 IP20 ENCLOSURE WITH EMC FILTER

SIZE A  
 PAGE 1 OF 3  
 DWG.NO.  
 DD.GA50.FR7.IP20.EMC

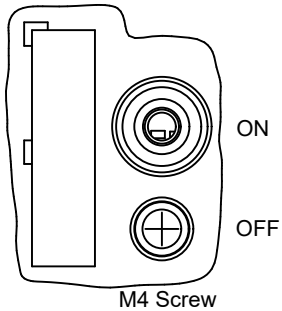
REV  
 0

**FRONT VIEW**

**BOTTOM VIEW**



**EMC FILTER SWITCH**



Detail A  
Scale 1:1

C/C: GA50□	TERMINAL SYMBOL	WIRE RANGE AWG (mm <sup>2</sup> )	TERMINAL SCREW	CLAMPING TORQUE N.m. (lb.in.)
2070□□□	R/L1, S/L2, T/L3	14 - 2/0 (2.5 - 70)	M6	5.5 (49)
	U/T1, V/T2, W/T3	14 - 2/0 (2.5 - 70)	M6	5.5 (49)
2082□□□	-, +1, +2	14 - 2/0 (2.5 - 70)	M6	5.5 (49)
	B1, B2	14 - 6 (2.5 - 16)	M4	1.7 (15)
	⊕	6 - 4 (16 - 25)	M6	5.4 - 6.0 (47.8 - 53.1)

□ Denotes A-Z  
Note: Refer to applicable codes and standards for proper wire type and size.



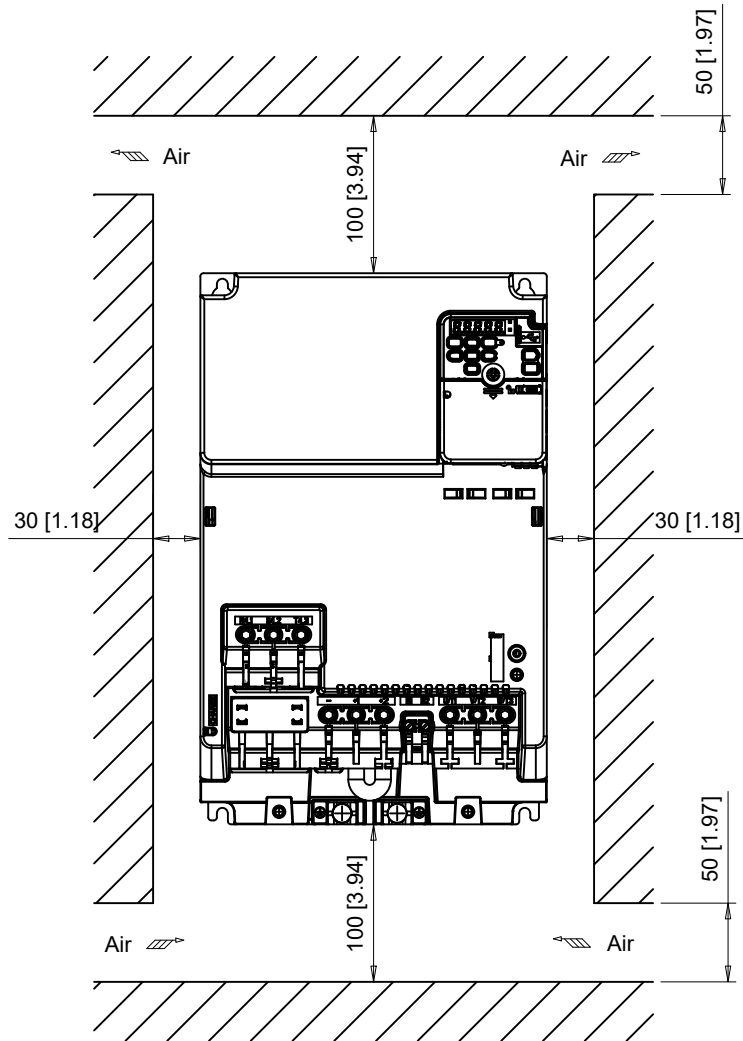
DRWN.	J. MATTAS	7-1-19
CHKD.	J. PIOTROWSKI	8-7-19
TECH.	L. UDDIN	9-8-19
APRV.	J. CAIRO	9-18-19

TITLE  
GA500 DIMENSION DRAWING  
FRAME SIZE 7  
IP20 ENCLOSURE WITH EMC FILTER

SIZE A PAGE 2 OF 3  
DWG.NO. DD.GA50.FR7.IP20.EMC

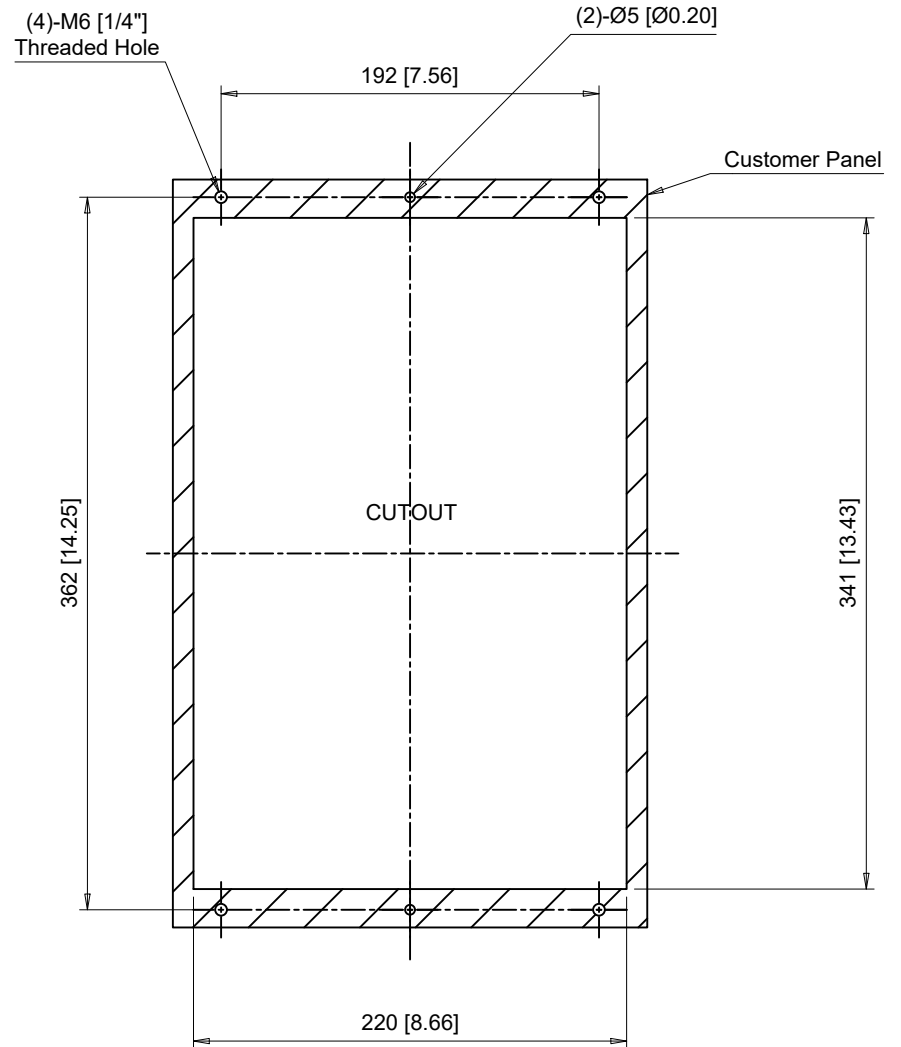
REV 0

Minimum Installation Clearances  
Scale 1:5



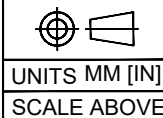
Note:  
For alternate mounting configurations, consult manual.

Panel Cutout  
For External Heatsink Mounting Configuration  
Scale 1:4



Notes:  
Exposed heatsink minimum clearance = 83 [3.27].  
Refer to external heatsink instructions document for additional details.

**YASKAWA**



DRWN.	J. MATTAS	7-1-19
CHKD.	J. PIOTROWSKI	8-7-19
TECH.	L. UDDIN	9-8-19
APRV.	J. CAIRO	9-18-19

TITLE  
GA500 DIMENSION DRAWING  
FRAME SIZE 7  
IP20 ENCLOSURE WITH EMC FILTER

SIZE A PAGE 3 OF 3  
DWG.NO.  
DD.GA50.FR7.IP20.EMC

REV  
0