

C/C: GA80□	INPUT VOLTAGE 3-PHASE (VAC)	WEIGHT Kg (lb)	COOLING FANS
2056□□□	200 TO 240	6.0 (13.2)	2
4031□□□	380 TO 480	6.0 (13.2)	2
4038□□□		6.0 (13.2)	2

□ denotes A-Z

1	REVISED MOUNTING BKTS P2
0	INITIAL RELEASE



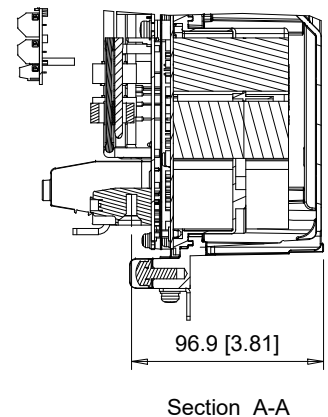
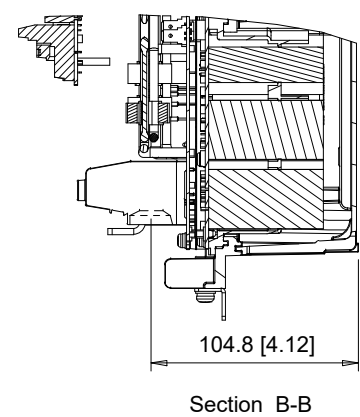
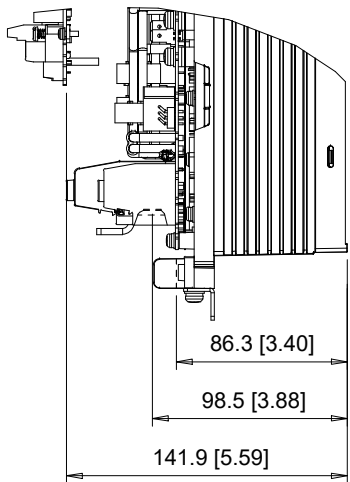
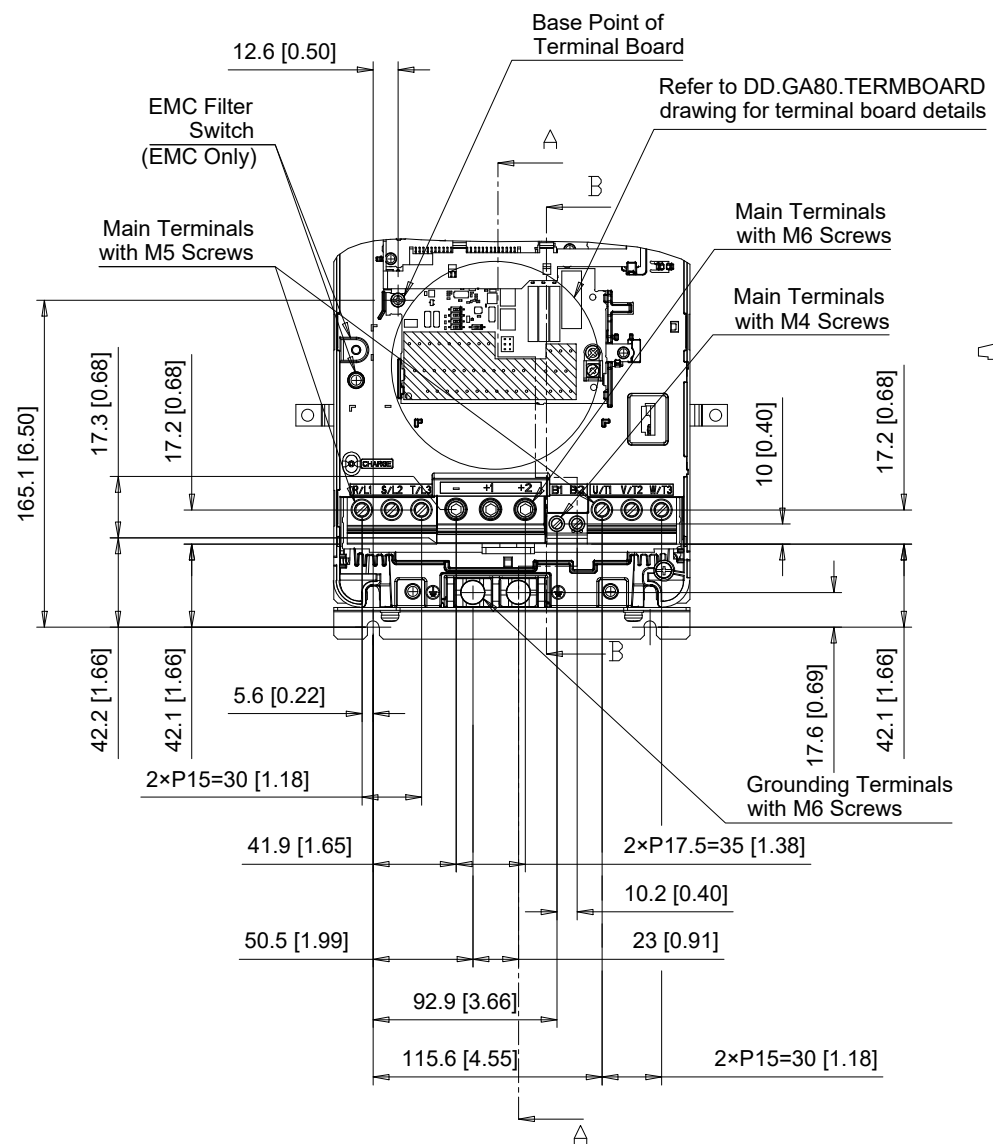
UNITS MM [IN]
SCALE 1:5

DRWN.	J. MATTAS	4-4-19
CHKD.	J. PIOTROWSKI	5-6-19
TECH.	L. UDDIN	5-20-19
APRV.	J. CAIRO	6-13-19

TITLE
GA800 DIMENSION DRAWING
FRAME SIZE 2
BACKSIDE TYPE 12 ENCLOSURE

SIZE	A	PAGE	1 OF 3
DWG.NO.	DD.GA80.FR2.FLNG		

REV
1



C/C:	TERMINAL SYMBOL	WIRE RANGE AWG (mm ²)	TERMINAL SCREW	CLAMPING TORQUE N.m. (lb.in.)
GA80□	R/L1, S/L2, T/L3	8 - 2 (10 - 35)	M5	4.1 - 4.5 (36 - 40)
2056□□□	U/T1, V/T2, W/T3	8 - 2 (10 - 35)	M5	4.1 - 4.5 (36 - 40)
4031□□□	- , +1, +2	14 - 2/0 (10 - 70)	M6	5 - 5.5 (45 - 49)
4038□□□	B1, B2	14 - 6 (2.5 - 16)	M4	1.5 - 1.7 (13.5 - 15)
	⊕	10 - 6 (6 - 16)	M6	5.4 - 6.0 (47.8 - 53.1)

□ Denotes A-Z

Note: Refer to applicable codes and standards for proper wire type and size.

1	REVISED MOUNTING BKTS P2
0	INITIAL RELEASE



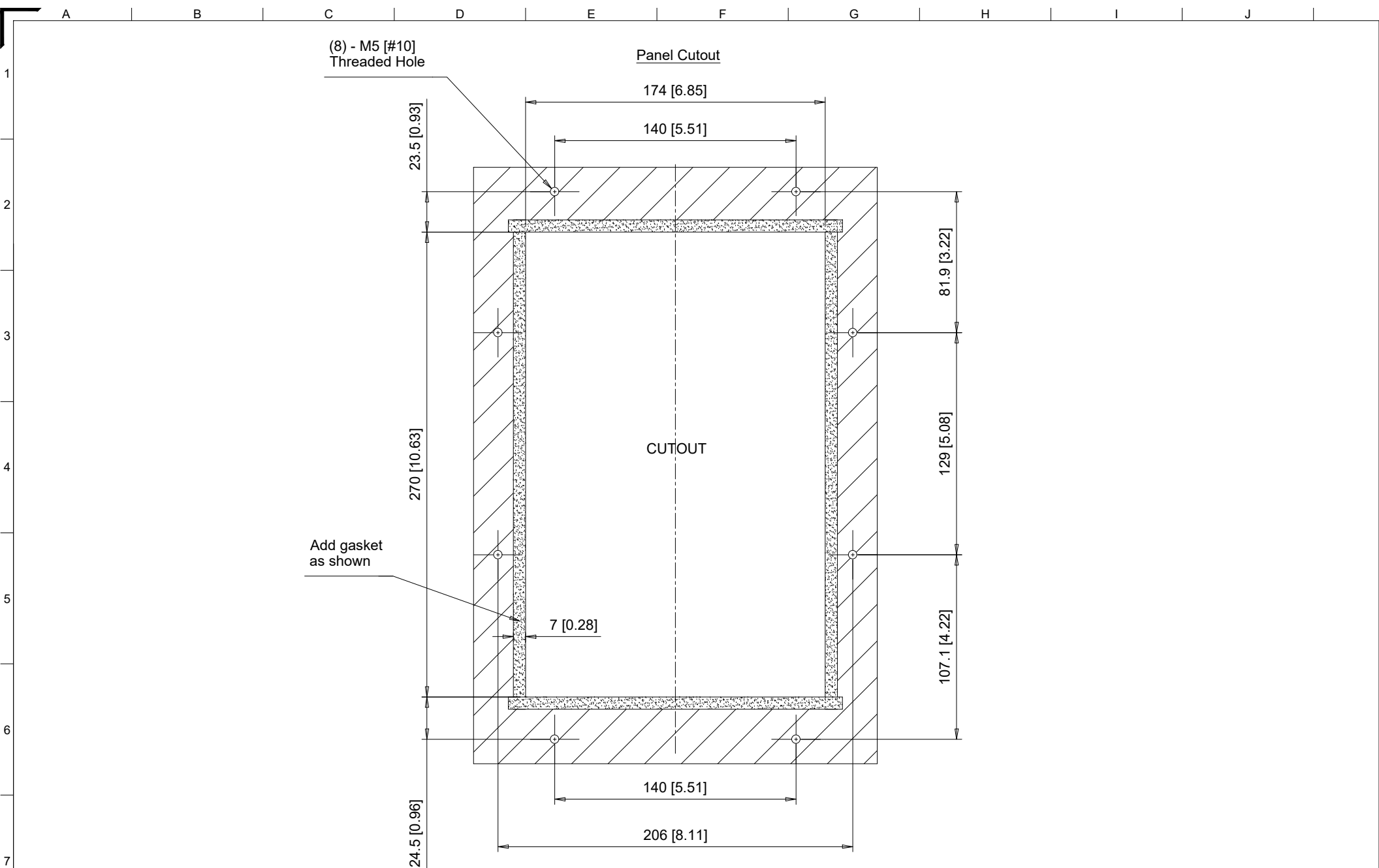
UNITS MM [IN]
SCALE 1:4

DRWN.	J. MATTAS	4-4-19
CHKD.	J. PIOTROWSKI	5-6-19
TECH.	L. UDDIN	5-20-19
APRV.	J. CAIRO	6-13-19

TITLE
GA800 DIMENSION DRAWING
FRAME SIZE 2
BACKSIDE TYPE 12 ENCLOSURE

SIZE	A	PAGE	2 OF 3
DWG.NO.	DD.GA80.FR2.FLNG		

REV
1



Notes:
 Exposed heatsink minimum clearance D = 73 [2.87].
 Refer to Type 12 heatsink external installation manual for additional details.

1	REVISED MOUNTING BKTS P2
0	INITIAL RELEASE



	DRWN.	J. MATTAS	4-4-19
	CHKD.	J. PIOTROWSKI	5-6-19
	TECH.	L. UDDIN	5-20-19
	APRV.	J. CAIRO	6-13-19
UNITS MM [IN]			
SCALE 1:3			

TITLE	GA800 DIMENSION DRAWING FRAME SIZE 2 BACKSIDE TYPE 12 ENCLOSURE
-------	---

SIZE	A	PAGE	3 OF 3
DWG.NO.	DD.GA80.FR2.FLNG		

REV	1
-----	---