

C/C: GA80□	INPUT VOLTAGE 3-PHASE (VAC)	WEIGHT Kg (lb)	COOLING FANS
2070□□□	200 TO 240	8.5 (18.7)	2
2082□□□		9.5 (20.9)	2
4044□□□	380 TO 480	8.0 (17.6)	2

□ denotes A-Z

2	CORRECTED DIMS P1
1	REV'D MOUNTING BKTS P2,3,4
0	INITIAL RELEASE



UNITS MM [IN]
 SCALE 1:6

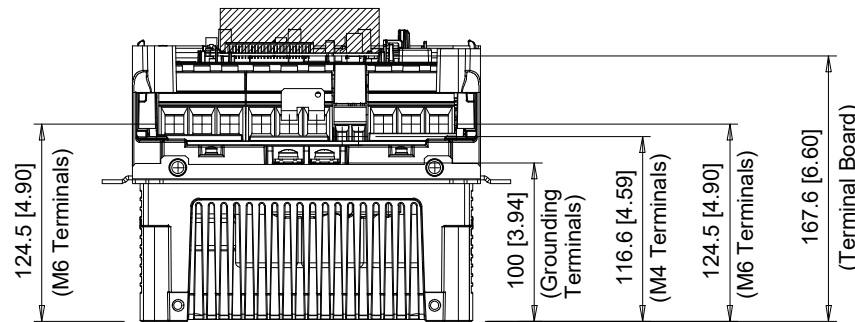
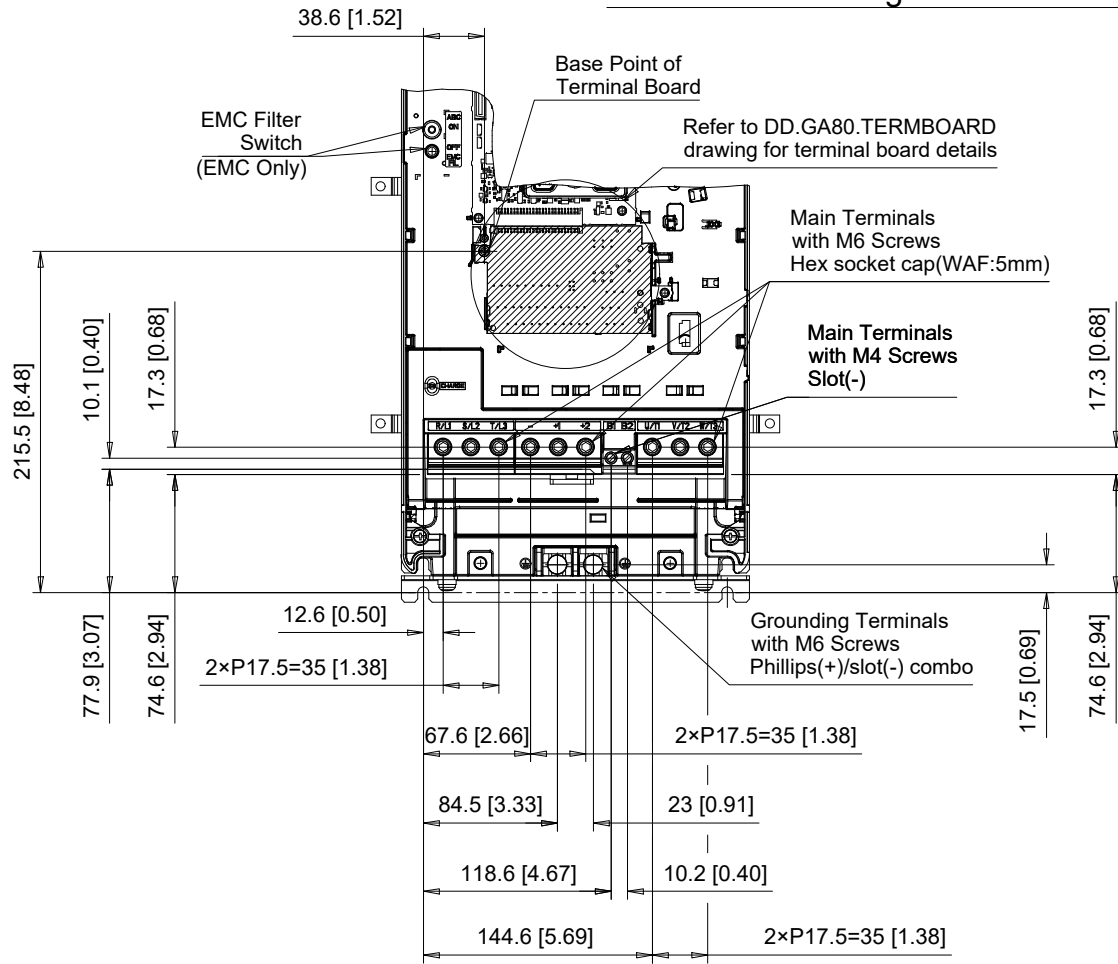
DRWN.	J. MATTAS	4-5-19
CHKD.	J. PIOTROWSKI	5-6-19
TECH.	L. UDDIN	5-20-19
APRV.	J. CAIRO	6-13-19

TITLE
 GA800 DIMENSION DRAWING
 FRAME SIZE 3
 BACKSIDE TYPE 12 ENCLOSURE

SIZE	A	PAGE	1 OF 5
DWG.NO.	DD.GA80.FR3.FLNG		

REV 2

Terminal and Wiring Information for GA80□2070



C/C: GA80□	TERMINAL SYMBOL	WIRE RANGE AWG (mm ²)	TERMINAL SCREW	CLAMPING TORQUE N.m. (lb.in.)
2070□□	R/L1, S/L2, T/L3	14 - 2/0 (2.5 - 70)	M6	5 - 5.5 (45 - 49)
	U/T1, V/T2, W/T3	14 - 2/0 (2.5 - 70)	M6	5 - 5.5 (45 - 49)
	-, +1, +2	14 - 2/0 (2.5 - 70)	M6	5 - 5.5 (45 - 49)
	B1, B2	14 - 6 (2.5 - 16)	M4	1.5 - 1.7 (13.5 - 15)
	⊕	8 - 4 (10 - 25)	M6	5.4 - 6.0 (47.8 - 53.1)

□ Denotes A-Z

Note: Refer to applicable codes and standards for proper wire type and size.

2	CORRECTED DIMS P1
1	REV'D MOUNTING BKTS P2,3,4
0	INITIAL RELEASE

YASKAWA

	DRWN. J. MATTAS	4-5-19
UNITS MM [IN]	CHKD. J. PIOTROWSKI	5-6-19
SCALE 1:5	TECH. L. UDDIN	5-20-19
	APRV. J. CAIRO	6-13-19

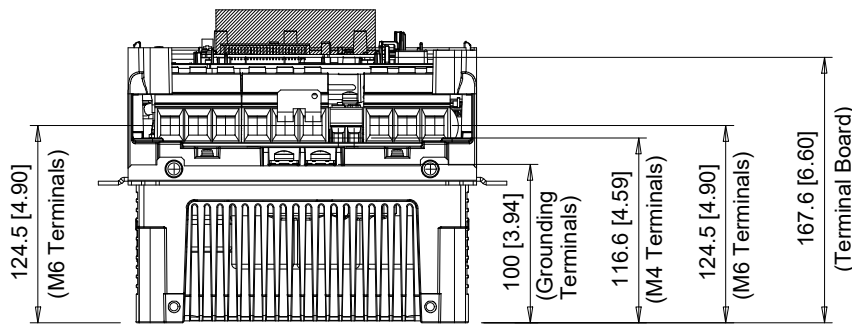
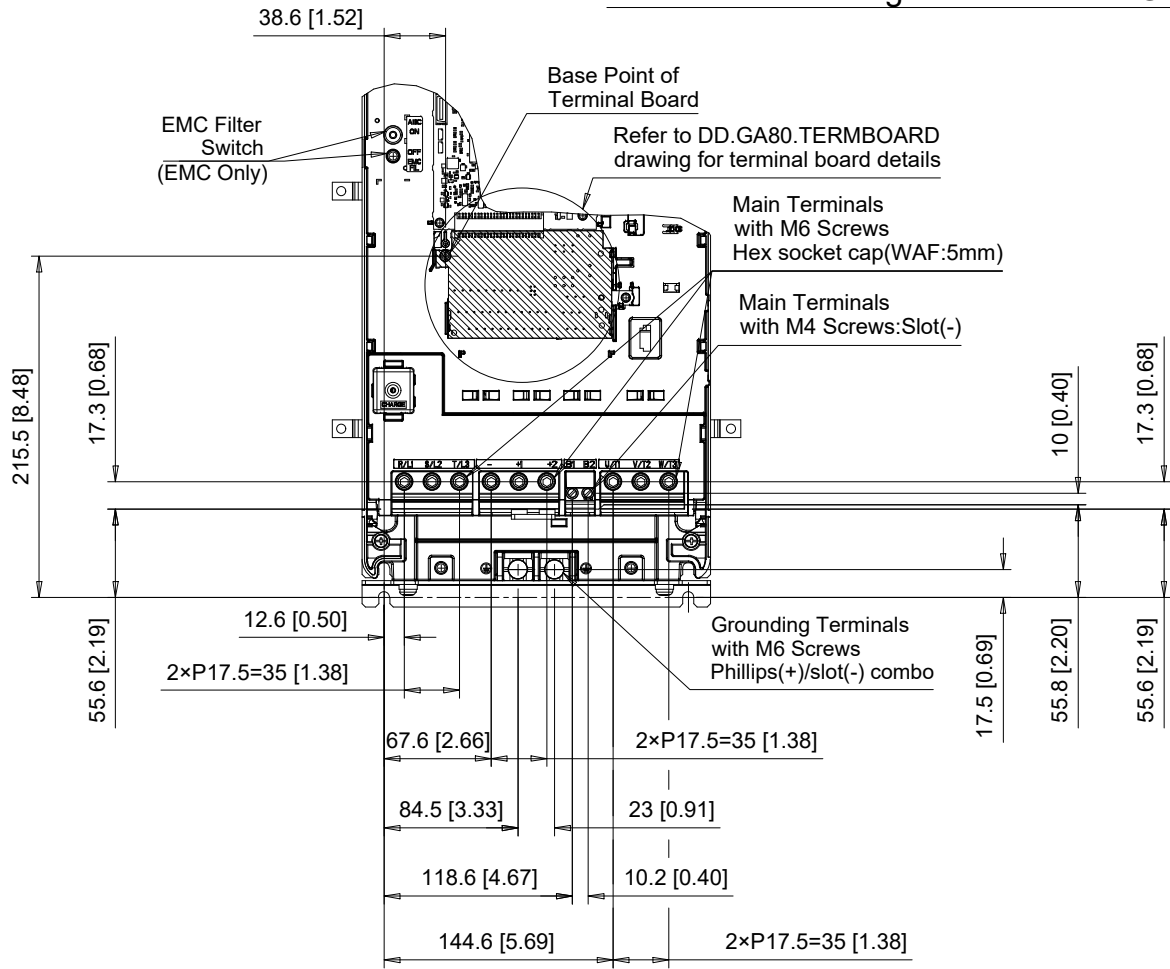
DRWN. J. MATTAS	4-5-19
CHKD. J. PIOTROWSKI	5-6-19
TECH. L. UDDIN	5-20-19
APRV. J. CAIRO	6-13-19

TITLE	GA800 DIMENSION DRAWING
	FRAME SIZE 3
	BACKSIDE TYPE 12 ENCLOSURE

SIZE A	PAGE 2 OF 5
DWG.NO.	DD.GA80.FR3.FLNG

REV	2
-----	---

Terminal and Wiring Information for GA80□2082



C/C:	TERMINAL SYMBOL	WIRE RANGE AWG (mm ²)	TERMINAL SCREW	CLAMPING TORQUE N.m. (lb.in.)
GA80□	R/L1, S/L2, T/L3	14 - 2/0 (2.5 - 70)	M6	5 - 5.5 (45 - 49)
2082□□	U/T1, V/T2, W/T3	14 - 2/0 (2.5 - 70)	M6	5 - 5.5 (45 - 49)
	-, +1, +2	14 - 2/0 (2.5 - 70)	M6	5 - 5.5 (45 - 49)
	B1, B2	14 - 6 (2.5 - 16)	M4	1.5 - 1.7 (13.5 - 15)
	⊕	8 - 4 (10 - 25)	M6	5.4 - 6.0 (47.8 - 53.1)

□ Denotes A-Z

Note: Refer to applicable codes and standards for proper wire type and size.

2	CORRECTED DIMS P1
1	REV'D MOUNTING BKTS P2,3,4
0	INITIAL RELEASE



	UNITS MM [IN]
SCALE 1:5	

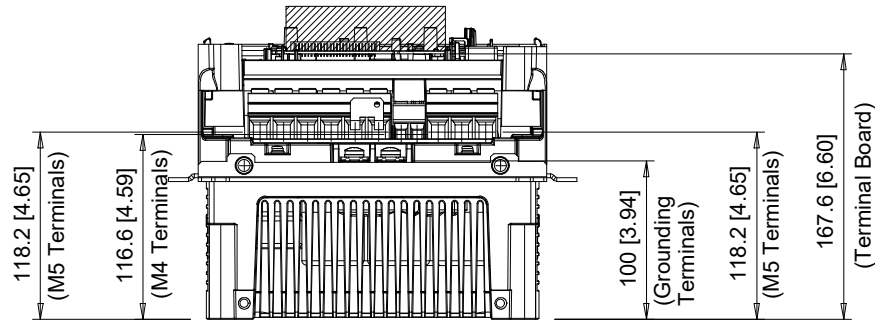
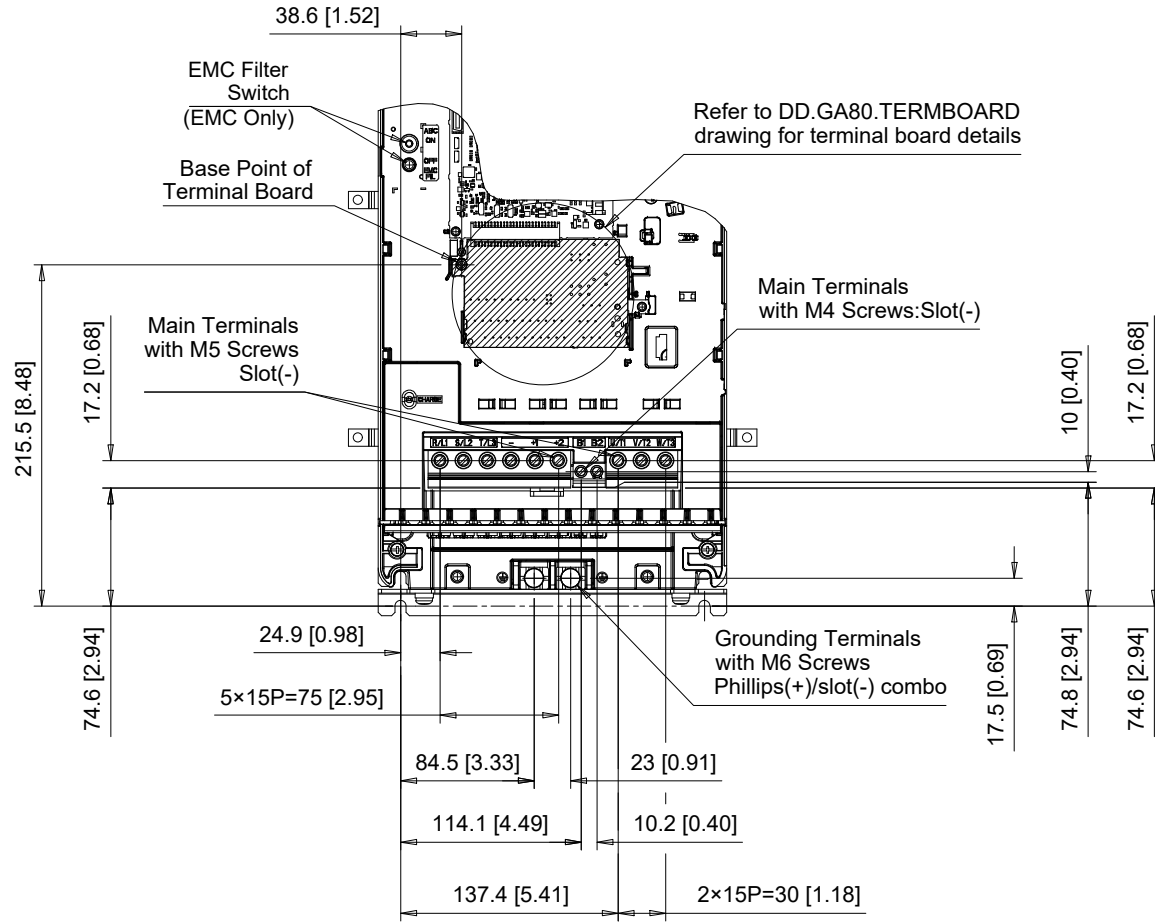
DRWN.	J. MATTAS	4-5-19
CHKD.	J. PIOTROWSKI	5-6-19
TECH.	L. UDDIN	5-20-19
APRV.	J. CAIRO	6-13-19

TITLE	GA800 DIMENSION DRAWING FRAME SIZE 3 BACKSIDE TYPE 12 ENCLOSURE
-------	---

SIZE	A	PAGE	3 OF 5
DWG.NO.	DD.GA80.FR3.FLNG		

REV	2
-----	---

Terminal and Wiring Information for GA80□4044



C/C:	TERMINAL SYMBOL	WIRE RANGE AWG (mm ²)	TERMINAL SCREW	CLAMPING TORQUE N.m. (lb.in.)
GA80□	R/L1, S/L2, T/L3	8 - 2 (10 - 35)	M5	4.1 - 4.5 (36 - 40)
4044□□	U/T1, V/T2, W/T3	8 - 2 (10 - 35)	M5	4.1 - 4.5 (36 - 40)
	-, +1, +2	8 - 2 (10 - 35)	M5	4.1 - 4.5 (36 - 40)
	B1, B2	14 - 6 (2.5 - 16)	M4	1.5 - 1.7 (13.5 - 15)
	⊕	8 - 4 (10 - 25)	M6	5.4 - 6.0 (47.8 - 53.1)

□ Denotes A-Z

Note: Refer to applicable codes and standards for proper wire type and size.

2	CORRECTED DIMS P1
1	REV'D MOUNTING BKTS P2,3,4
0	INITIAL RELEASE



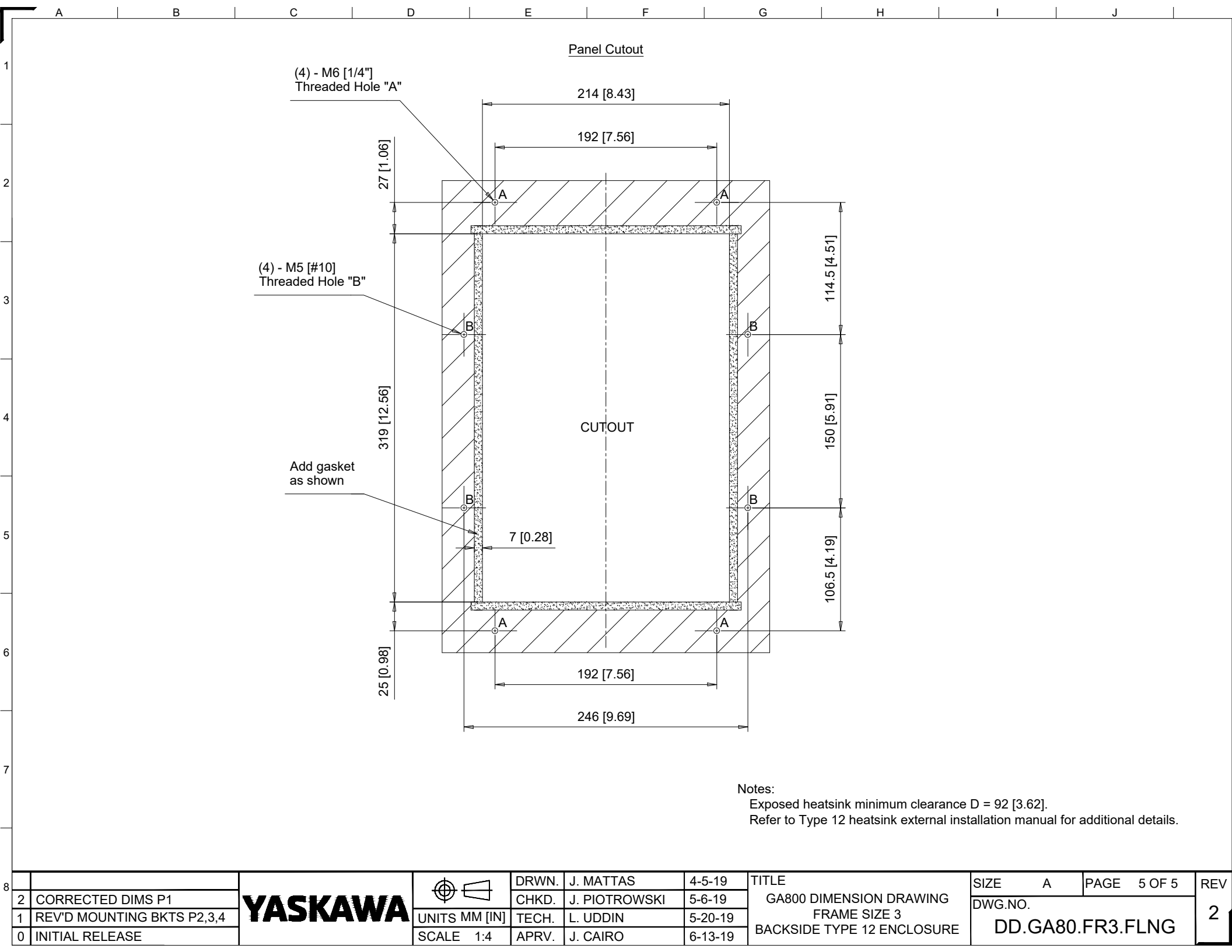
UNITS MM [IN]
SCALE 1:5

DRWN.	J. MATTAS	4-5-19
CHKD.	J. PIOTROWSKI	5-6-19
TECH.	L. UDDIN	5-20-19
APRV.	J. CAIRO	6-13-19

TITLE
GA800 DIMENSION DRAWING
FRAME SIZE 3
BACKSIDE TYPE 12 ENCLOSURE

SIZE	A	PAGE	4 OF 5
DWG.NO.	DD.GA80.FR3.FLNG		

REV
2



Notes:
 Exposed heatsink minimum clearance D = 92 [3.62].
 Refer to Type 12 heatsink external installation manual for additional details.

8										
2	CORRECTED DIMS P1	YASKAWA		DRWN. J. MATTAS	4-5-19	TITLE GA800 DIMENSION DRAWING FRAME SIZE 3 BACKSIDE TYPE 12 ENCLOSURE	SIZE A	PAGE 5 OF 5	REV	
1	REV'D MOUNTING BKTS P2,3,4			CHKD. J. PIOTROWSKI	5-6-19		DWG.NO.	DD.GA80.FR3.FLNG	2	
0	INITIAL RELEASE			TECH. L. UDDIN	5-20-19					
				APRV. J. CAIRO	6-13-19					
		UNITS MM [IN]		SCALE 1:4						