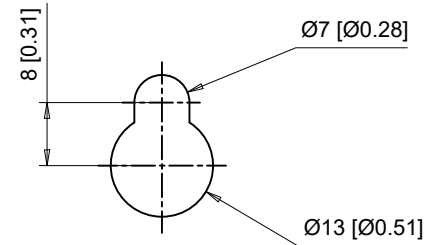
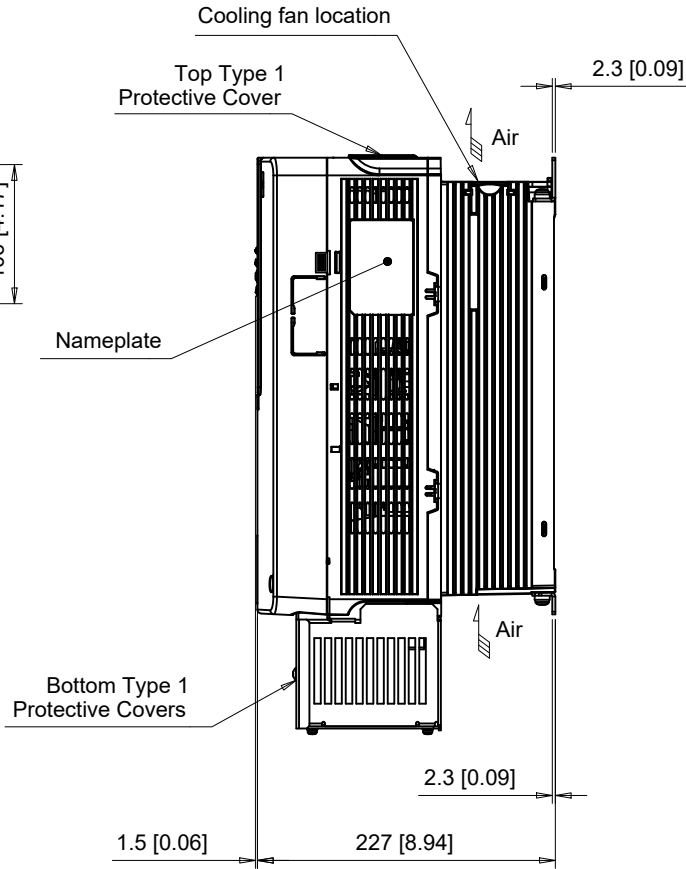
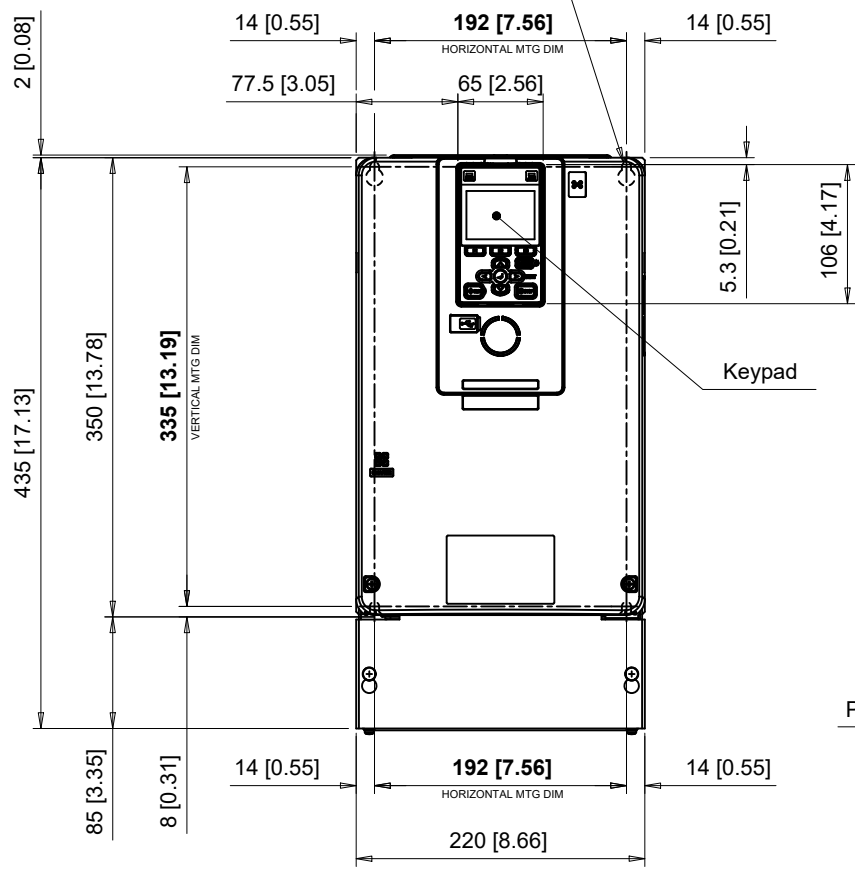
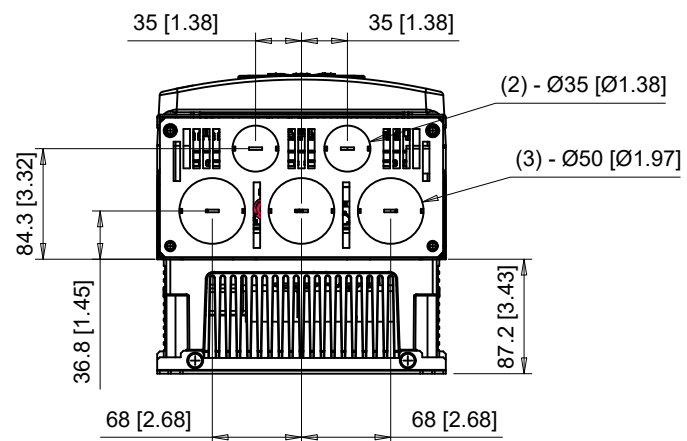


(4) Mounting Holes for M6 [1/4"] Screws.
See Detail A for top mounting hole dimensions.



Detail A
Top mounting hole dimensions
Scale 1:1



The dimensions shown are for an IP20 Type Drive that has been converted to a NEMA Type 1 Drive by adding the parts from NEMA 1 Kit part number 900-192-121-004

C/C:	INPUT VOLTAGE	WEIGHT	COOLING
GA80□	3-PHASE (VAC)	Kg (lb)	FANS
2082□□□	200 TO 240	10.0 (22.0)	2

□ denotes A-Z

1	REVISED KIT PART NUMBER
0	INITIAL RELEASE



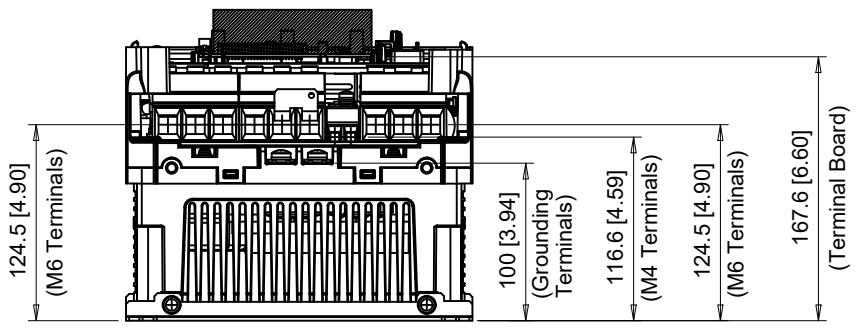
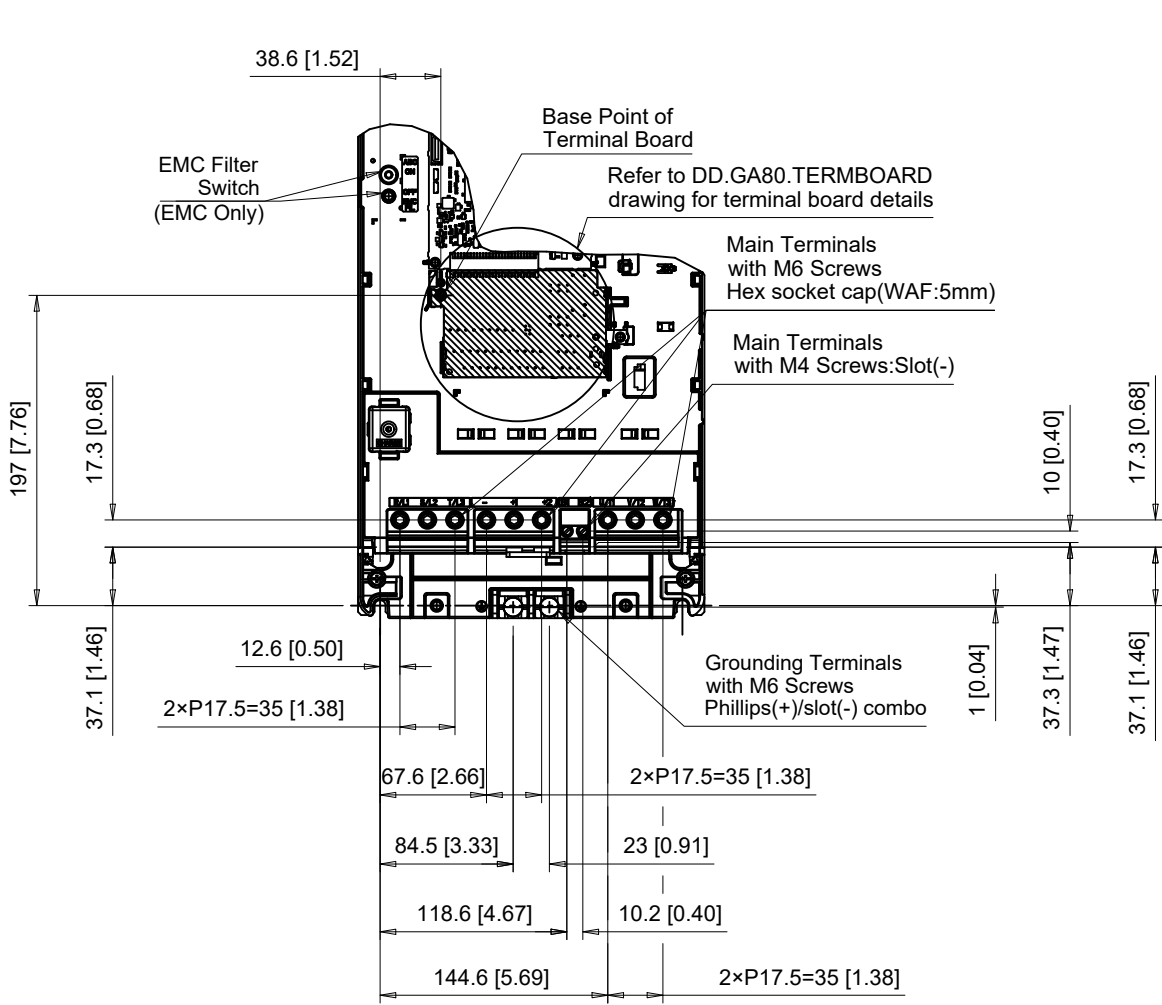
	UNITS	MM [IN]
	SCALE	1:6

DRWN.	J. MATTAS	6-28-18
CHKD.	J. PIOTROWSKI	7-9-18
TECH.	L. UDDIN	7-16-18
APRV.	J. CAIRO	8-21-18

TITLE	GA800 DIMENSION DRAWING FRAME SIZE 3B NEMA TYPE 1 ENCLOSURE
-------	---

SIZE	A	PAGE	1 OF 3	REV	1
DWG.NO.	DD.GA80.FR3B.N1				

A B C D E F G H I J



C/C: GA80□	TERMINAL SYMBOL	WIRE RANGE AWG (mm ²)	TERMINAL SCREW	CLAMPING TORQUE N.m. (lb.in.)
2082□□□	R/L1, S/L2, T/L3	14 - 2/0 (2.5 - 70)	M6	5 - 5.5 (45 - 49)
	U/T1, V/T2, W/T3	14 - 2/0 (2.5 - 70)	M6	5 - 5.5 (45 - 49)
	-, +1, +2	14 - 2/0 (2.5 - 70)	M6	5 - 5.5 (45 - 49)
	B1, B2	14 - 6 (2.5 - 16)	M4	1.5 - 1.7 (13.5 - 15)
	⊕	8 - 4 (10 - 25)	M6	5.4 - 6.0 (47.8 - 53.1)

□ Denotes A-Z
Note: Refer to applicable codes and standards for proper wire type and size.

1	REVISED KIT PART NUMBER
0	INITIAL RELEASE



UNITS MM [IN]
SCALE 1:5

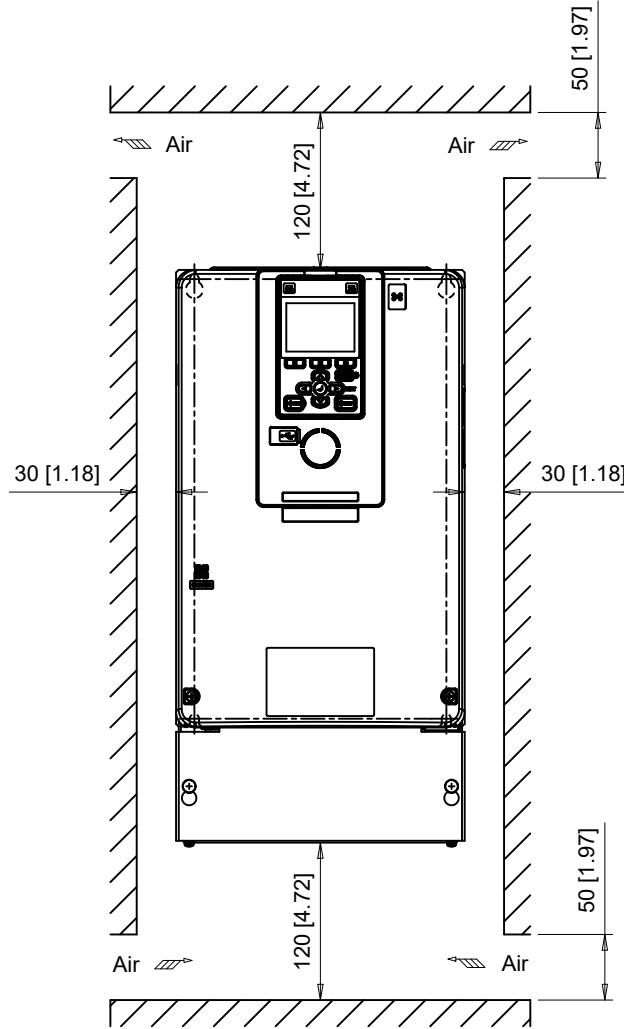
DRWN.	J. MATTAS	6-28-18
CHKD.	J. PIOTROWSKI	7-9-18
TECH.	L. UDDIN	7-16-18
APRV.	J. CAIRO	8-21-18

TITLE
GA800 DIMENSION DRAWING
FRAME SIZE 3B
NEMA TYPE 1 ENCLOSURE

SIZE A	PAGE 2 OF 3
DWG.NO. DD.GA80.FR3B.N1	

REV
1

Minimum Installation Clearances



Note:
For alternate mounting configurations, consult manual.

		YASKAWA	 UNITS MM [IN] SCALE 1:6	DRWN. J. MATTAS 6-28-18	TITLE GA800 DIMENSION DRAWING FRAME SIZE 3B NEMA TYPE 1 ENCLOSURE	SIZE A	PAGE 3 OF 3	REV 1
1	REVISED KIT PART NUMBER			CHKD. J. PIOTROWSKI 7-9-18		TECH. L. UDDIN 7-16-18	DWG.NO.	DD.GA80.FR3B.N1
0	INITIAL RELEASE	APRV. J. CAIRO 8-21-18						