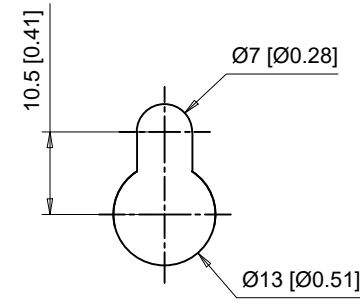
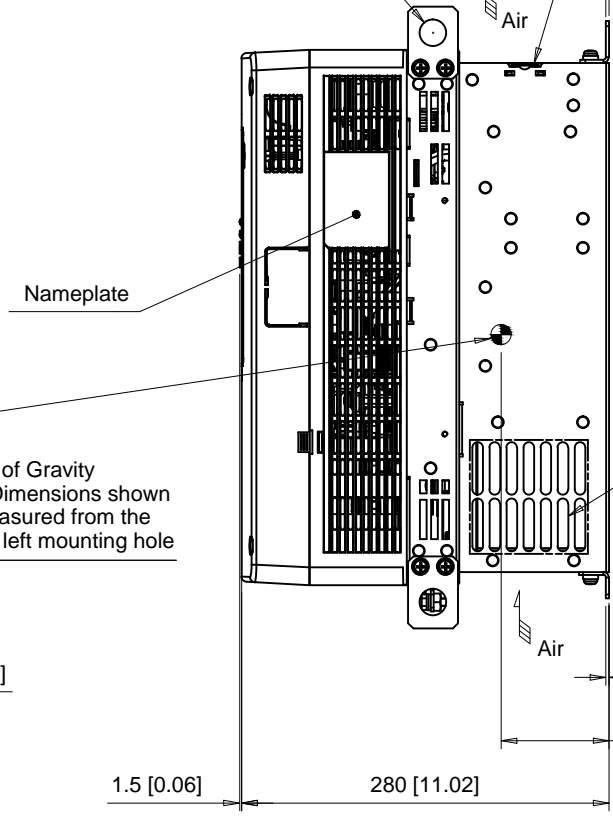
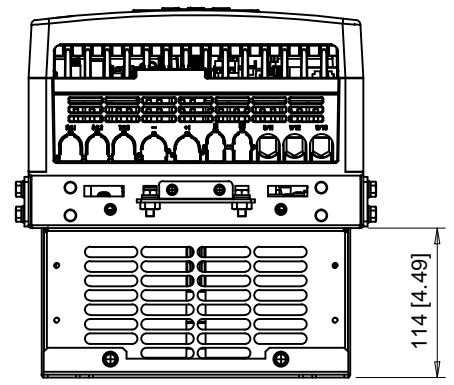


(4) Mounting Holes for M6 [1/4"] Screws. See Detail A for top mounting hole dimensions.

Note: Spreader bar required to avoid damage during lifting  
(4)-Lifting Holes Ø20 [Ø0.79]



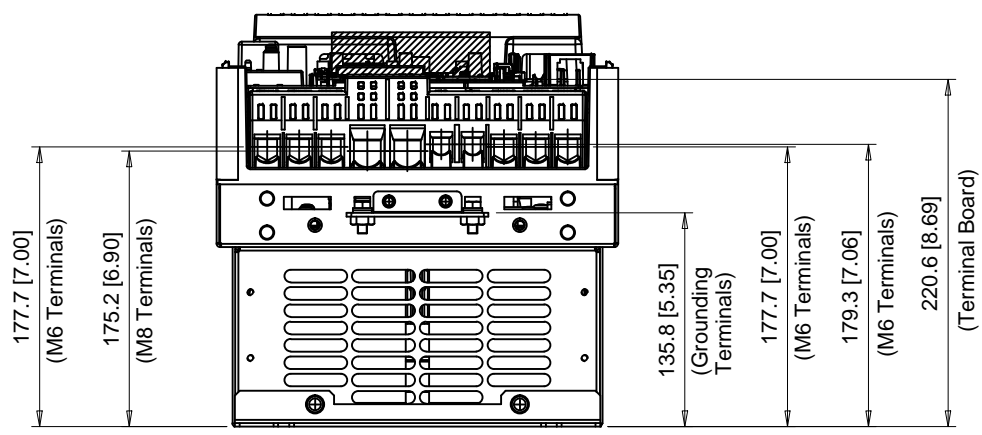
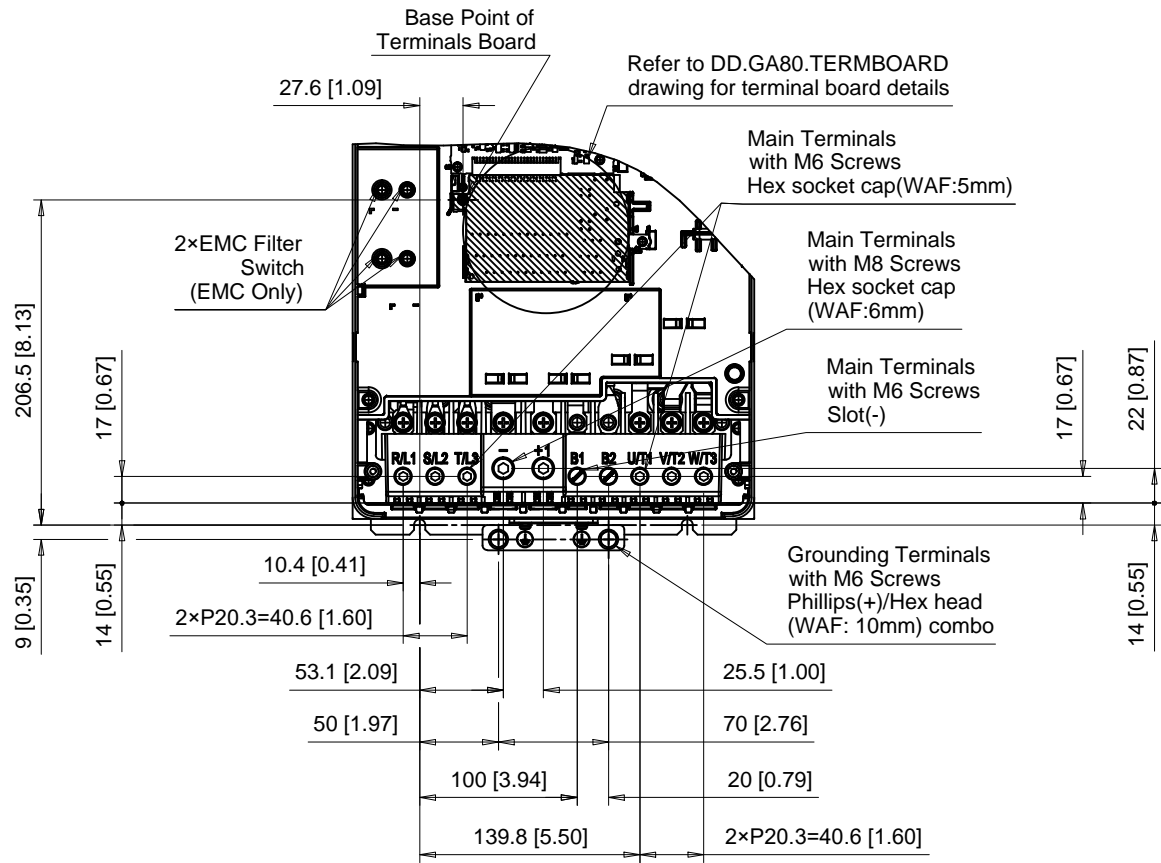
**Detail A**  
Top mounting hole dimensions  
Scale 1:1



C/C: GA80□	INPUT VOLTAGE 3-PHASE (VAC)	WEIGHT Kg (lb)	COOLING FANS
2138□□□	200 TO 240	24 (52.8)	2
4089□□□	380 TO 480	22 (48.5)	2
4103□□□		25 (55.0)	2

□ denotes A-Z

# Terminal and Wiring Information for GA80□2138 and GA80□4103



C/C: GA80□	TERMINAL SYMBOL	WIRE RANGE AWG (mm <sup>2</sup> )	TERMINAL SCREW	CLAMPING TORQUE N.m. (lb.in.)
2138□□□	R/L1, S/L2, T/L3	6 - 2/0 (16 - 70)	M6	8 - 9 (71 - 80)
4103□□□	U/T1, V/T2, W/T3	6 - 2/0 (16 - 70)	M6	8 - 9 (71 - 80)
	-, +1	2 - 4/0 (35 - 120)	M8	10 - 12 (89 - 107)
	B1, B2	14 - 2 (2.5 - 35)	M6	3.0 - 3.5 (27 - 31)
	⊕	6 - 4 (16 - 25)	M6	5.4 - 6.0 (47.8 - 53.1)

□ Denotes A-Z  
Note: Refer to applicable codes and standards for proper wire type and size.

**YASKAWA**

UNITS MM [IN]  
SCALE 1:5

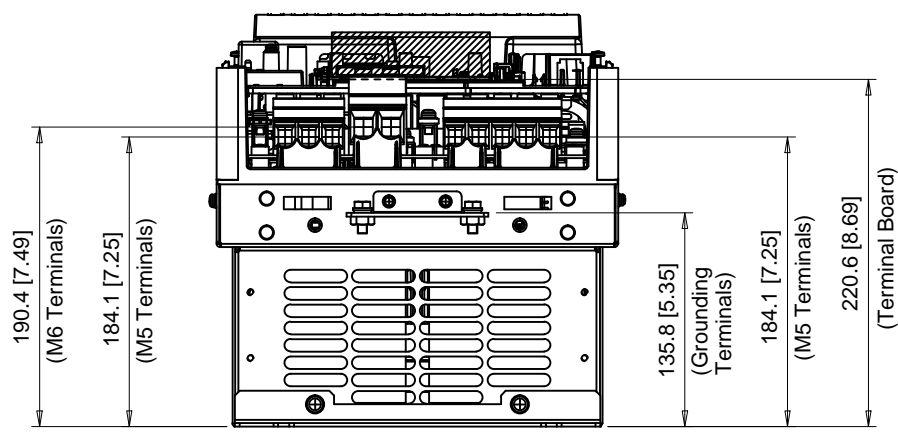
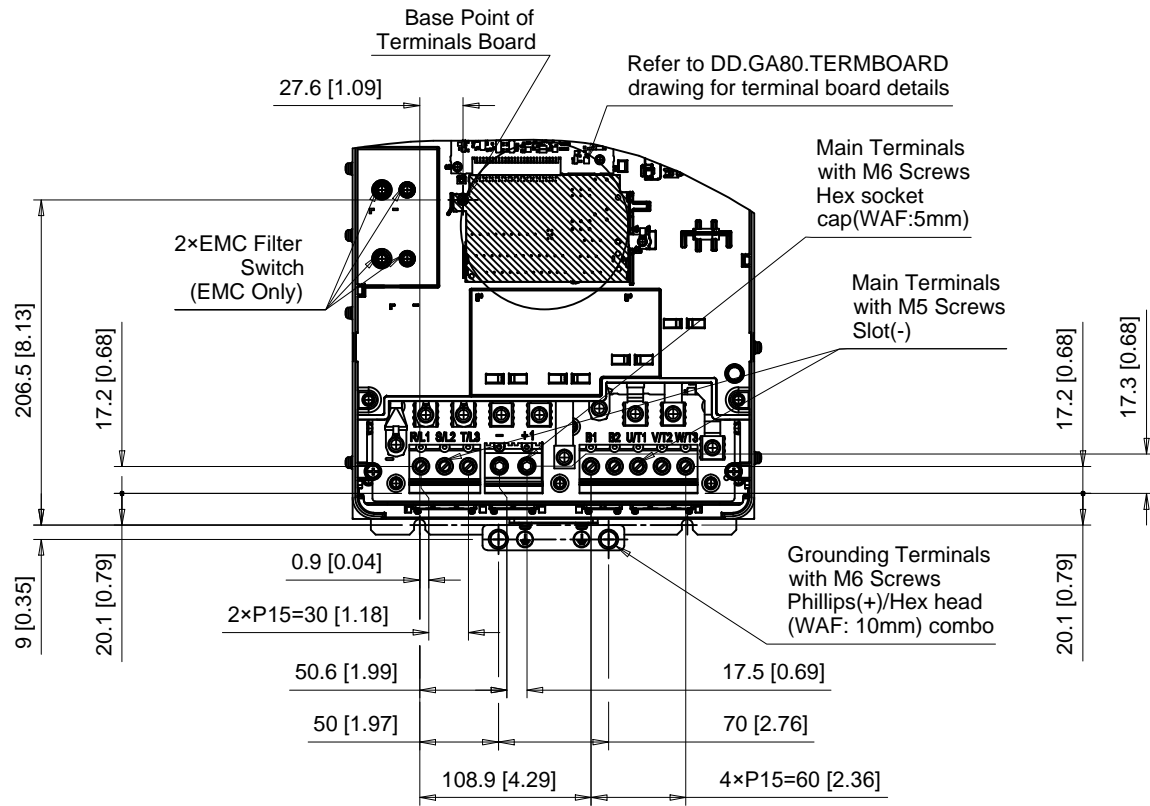
DRWN. J. MATTAS 6-27-18  
CHKD. J. PIOTROWSKI 7-9-18  
TECH. L. UDDIN 7-16-18  
APRV. J. CAIRO 8-21-18

TITLE  
GA800 DIMENSION DRAWING  
FRAME SIZE 6  
IP20 ENCLOSURE

SIZE A PAGE 2 OF 4  
DWG.NO. DD.GA80.FR6.IP20

REV 0

# Terminal and Wiring Information for GA80□4089



C/C: GA80□	TERMINAL SYMBOL	WIRE RANGE AWG (mm <sup>2</sup> )	TERMINAL SCREW	CLAMPING TORQUE N.m. (lb.in.)
4089□□□	R/L1, S/L2, T/L3	8 - 2 (10 - 35)	M5	4.1 - 4.5 (36 - 40)
	U/T1, V/T2, W/T3	8 - 2 (10 - 35)	M5	4.1 - 4.5 (36 - 40)
	-, +1	14 - 2/0 (2.5 - 70)	M6	5.0 - 5.5 (45 - 49)
	B1, B2	8 - 2 (10 - 35)	M5	4.1 - 4.5 (36 - 40)
	⊕	6 - 4 (16 - 25)	M6	5.4 - 6.0 (47.8 - 53.1)

□ Denotes A-Z  
 Note: Refer to applicable codes and standards for proper wire type and size.

**YASKAWA**

UNITS MM [IN]  
 SCALE 1:5

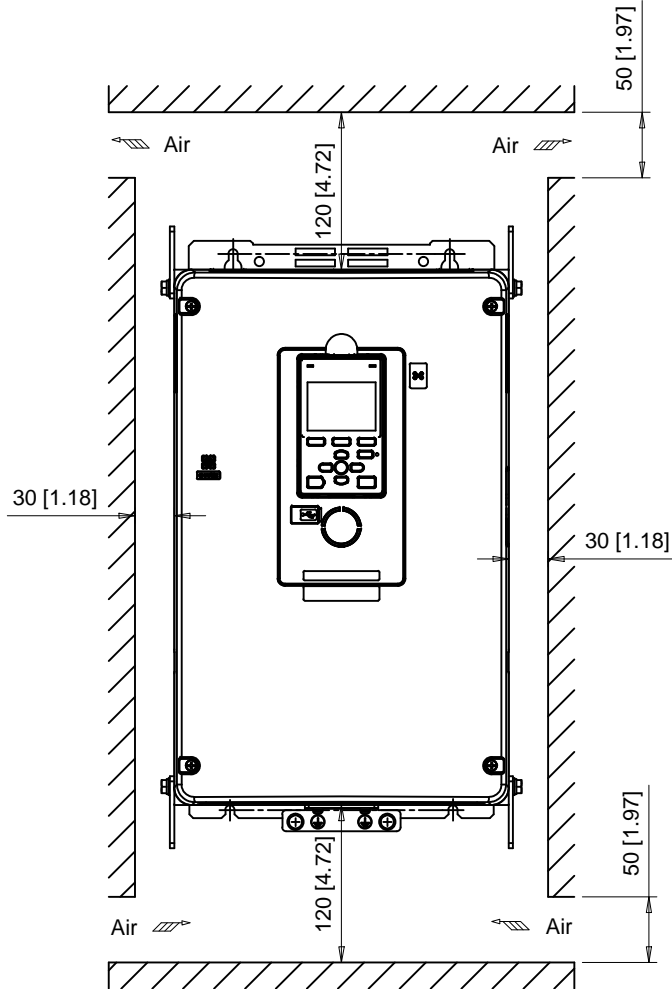
DRWN. J. MATTAS 6-27-18  
 CHKD. J. PIOTROWSKI 7-9-18  
 TECH. L. UDDIN 7-16-18  
 APRV. J. CAIRO 8-21-18

TITLE  
 GA800 DIMENSION DRAWING  
 FRAME SIZE 6  
 IP20 ENCLOSURE

SIZE A PAGE 3 OF 4  
 DWG.NO. DD.GA80.FR6.IP20

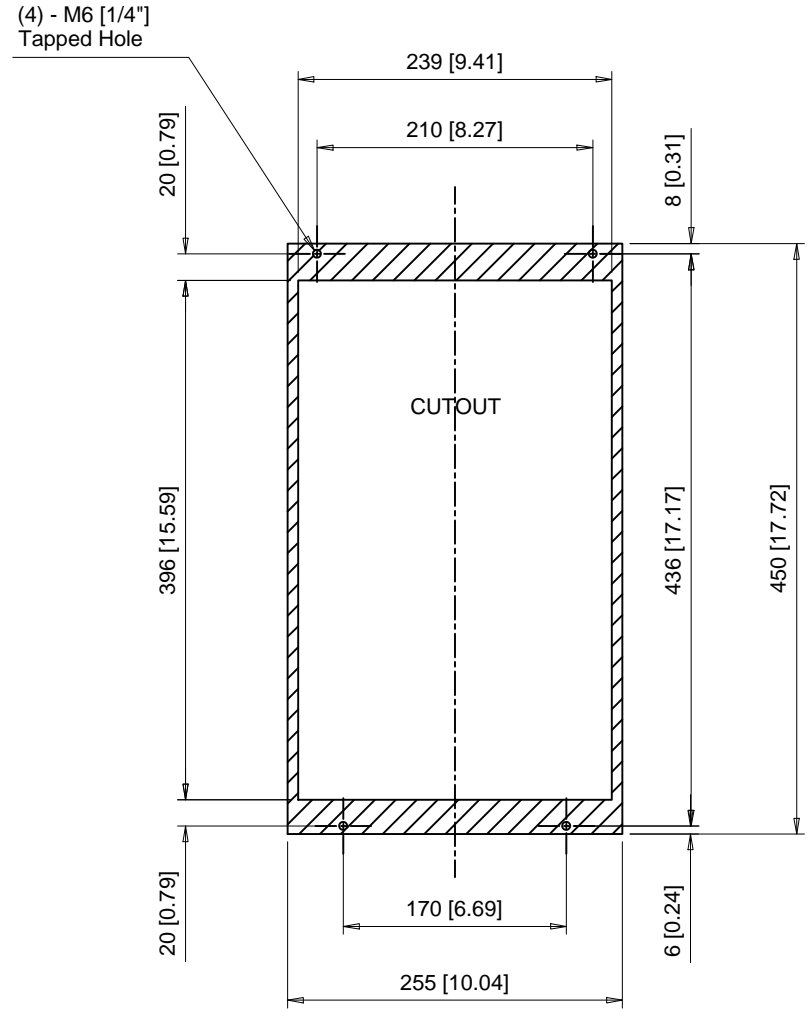
REV 0

Minimum Installation Clearances



Note:  
For alternate mounting configurations, consult manual.

Panel Cutout  
For External Heatsink Mounting Configuration



Notes:  
Exposed heatsink minimum clearance D = 119 [4.69].  
Refer to external heatsink instructions document for additional details.

**YASKAWA**

UNITS MM [IN]  
SCALE 1:6

DRWN.	J. MATTAS	6-27-18
CHKD.	J. PIOTROWSKI	7-9-18
TECH.	L. UDDIN	7-16-18
APRV.	J. CAIRO	8-21-18

TITLE  
GA800 DIMENSION DRAWING  
FRAME SIZE 6  
IP20 ENCLOSURE

SIZE A  
PAGE 4 OF 4  
DWG.NO.  
DD.GA80.FR6.IP20

REV  
0