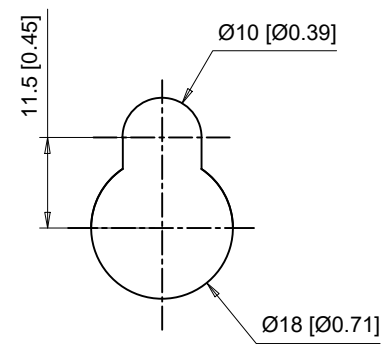
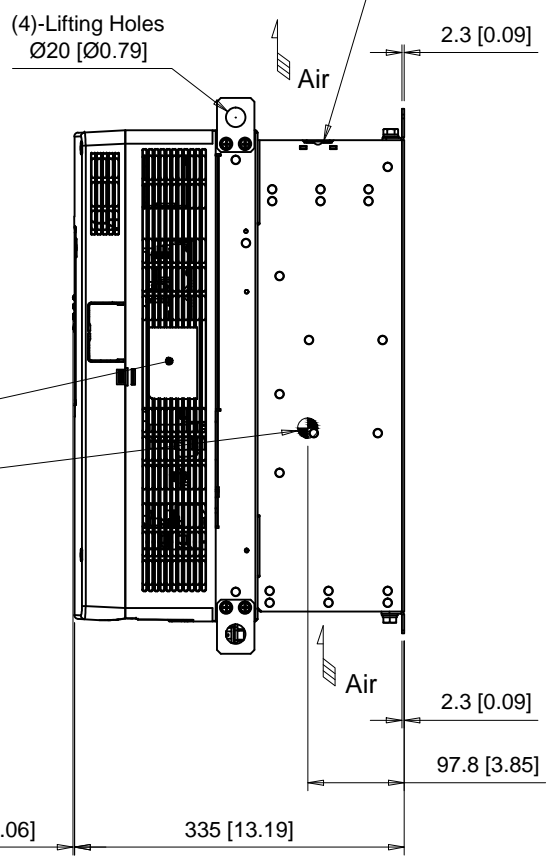
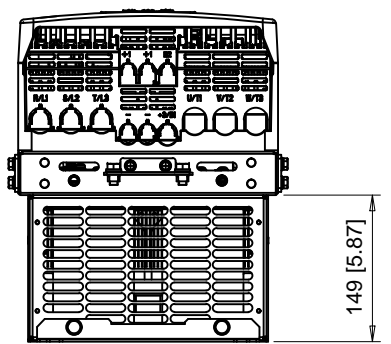


Note: Spreader bar required to avoid damage during lifting

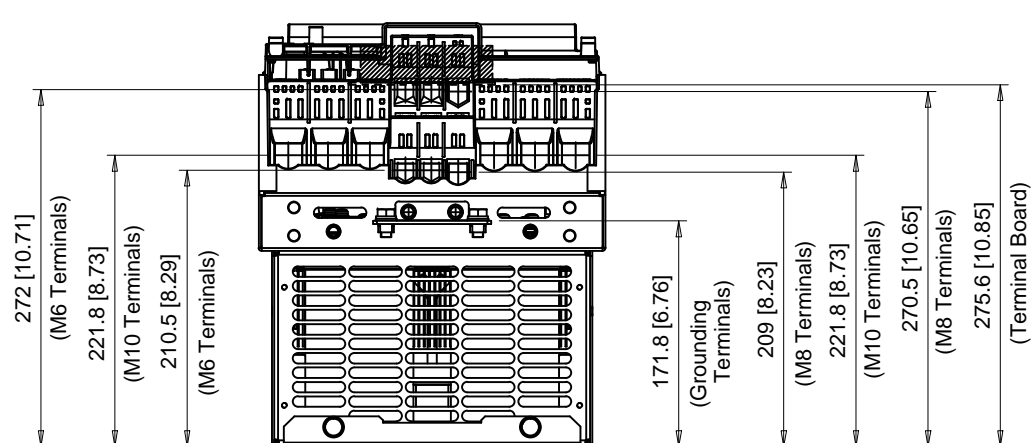
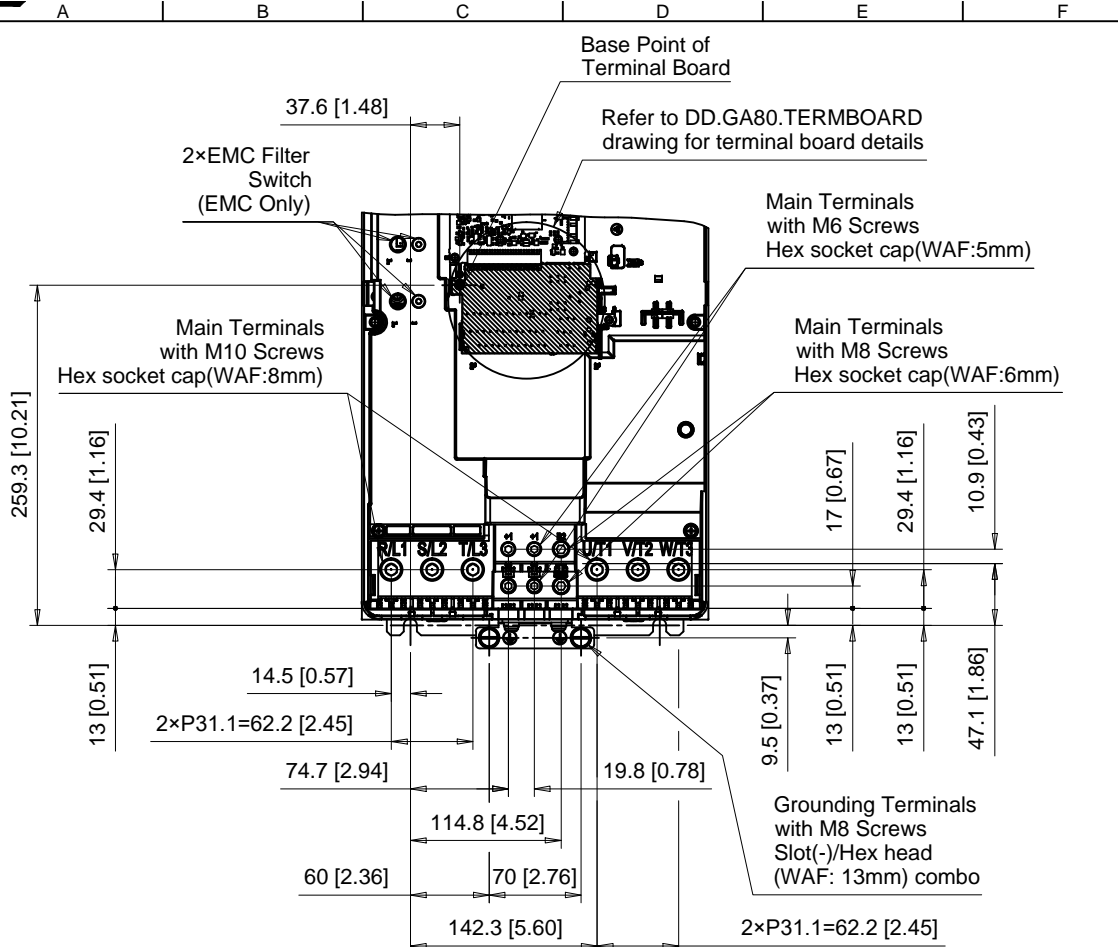


**Detail A**  
Top mounting hole dimensions  
Scale 1:1



C/C: GA80□	INPUT VOLTAGE 3-PHASE (VAC)	WEIGHT Kg (lb)	COOLING FANS
2169□□□	200 TO 240	39 (85.8)	2
2211□□□		40 (88.0)	2
4140□□□	380 TO 480	38 (83.6)	2
4168□□□		39 (85.8)	2

□ denotes A-Z



C/C: GA80□	TERMINAL SYMBOL	WIRE RANGE AWG (mm <sup>2</sup> )	TERMINAL SCREW	CLAMPING TORQUE N.m. (lb.in.)
2169□□□	R/L1, S/L2, T/L3	2 - 300 (35 - 150)	M10	12 - 14 (107 - 124)
2211□□□	U/T1, V/T2, W/T3	2 - 300 (35 - 150)	M10	12 - 14 (107 - 124)
4140□□□	-,-, +1, +1	6 - 2/0 (16 - 70) <sup>*1</sup>	M6	8 - 9 (71 - 80)
4168□□□	+3/B1, B2	4 - 3/0 (25 - 95)	M8	8 - 9 (71 - 80)
	⊕	4 - 1/0 (25 - 50)	M8	9.0 - 11 (79.7 - 97.4)

□ Denotes A-Z  
 Note: Refer to applicable codes and standards for proper wire type and size.  
 \*1 - Terminals "-" and "+1" have two screws. Wire range indicates the wire gauge per one terminal.

**YASKAWA**



UNITS MM [IN]  
 SCALE 1:6

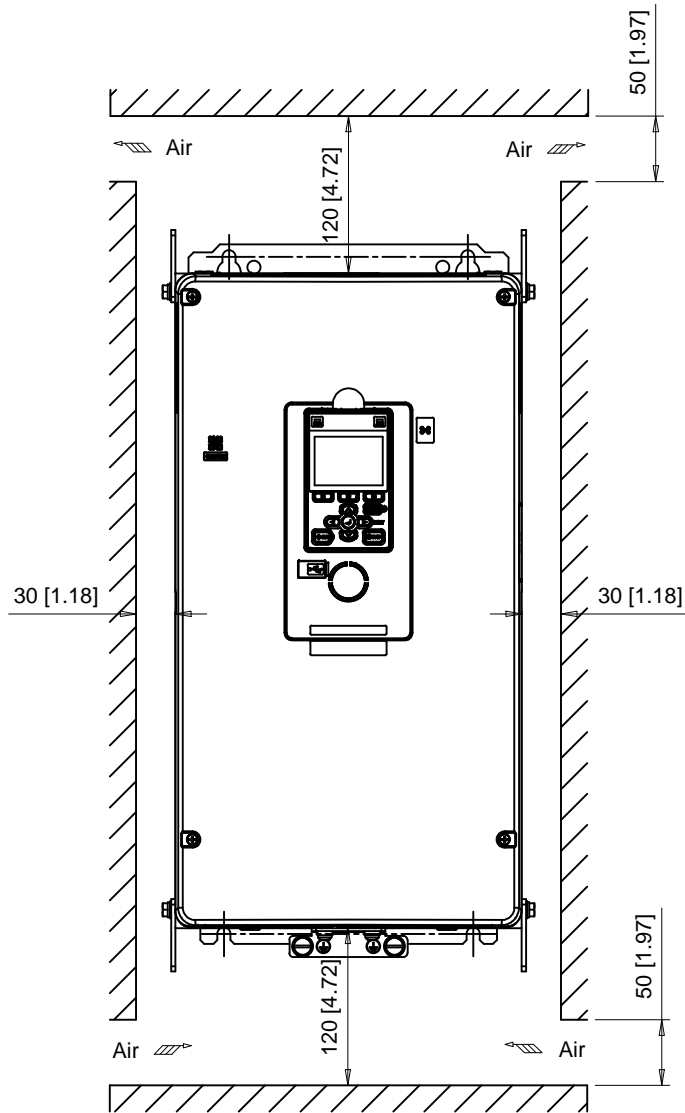
DRWN. J. MATTAS 6-27-18  
 CHKD. J. PIOTROWSKI 7-9-18  
 TECH. L. UDDIN 7-16-18  
 APRV. J. CAIRO 8-21-18

TITLE  
 GA800 DIMENSION DRAWING  
 FRAME SIZE 7  
 IP20 ENCLOSURE

SIZE A PAGE 2 OF 3  
 DWG.NO. DD.GA80.FR7.IP20

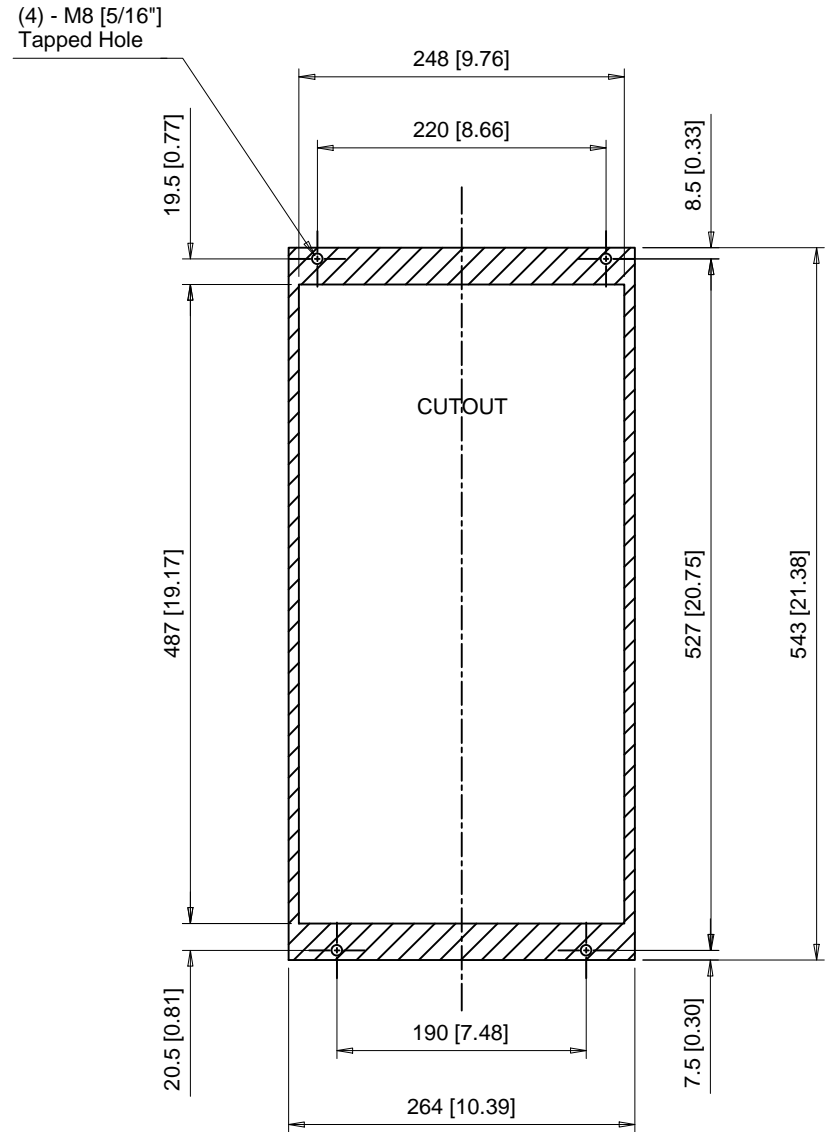
REV 0

Minimum Installation Clearances



Note:  
For alternate mounting configurations, consult manual.

Panel Cutout  
For External Heatsink Mounting Configuration



Notes:  
Exposed heatsink minimum clearance D = 154 [6.06].  
Refer to external heatsink instructions document for additional details.

**YASKAWA**

UNITS MM [IN]  
SCALE 1:6

DRWN.	J. MATTAS	6-27-18
CHKD.	J. PIOTROWSKI	7-9-18
TECH.	L. UDDIN	7-16-18
APRV.	J. CAIRO	8-21-18

TITLE  
GA800 DIMENSION DRAWING  
FRAME SIZE 7  
IP20 ENCLOSURE

SIZE A  
PAGE 3 OF 3  
DWG.NO.  
DD.GA80.FR7.IP20

REV  
0