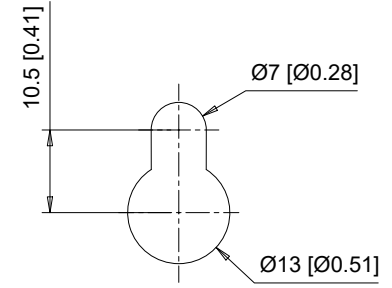
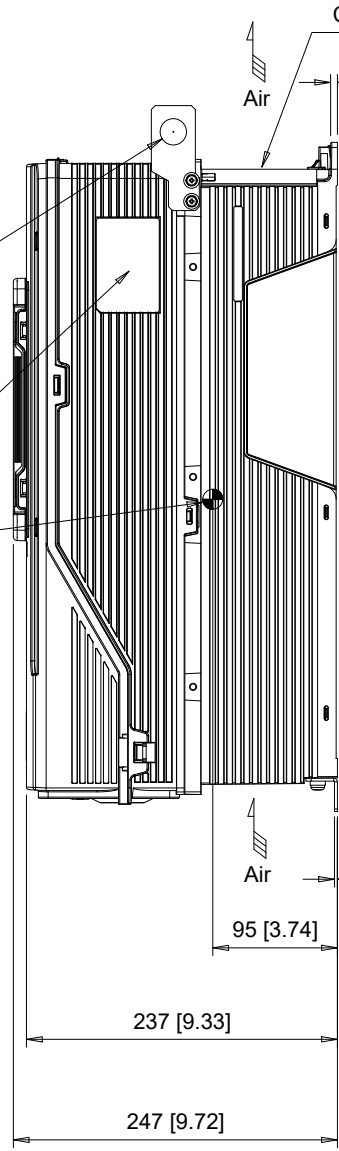


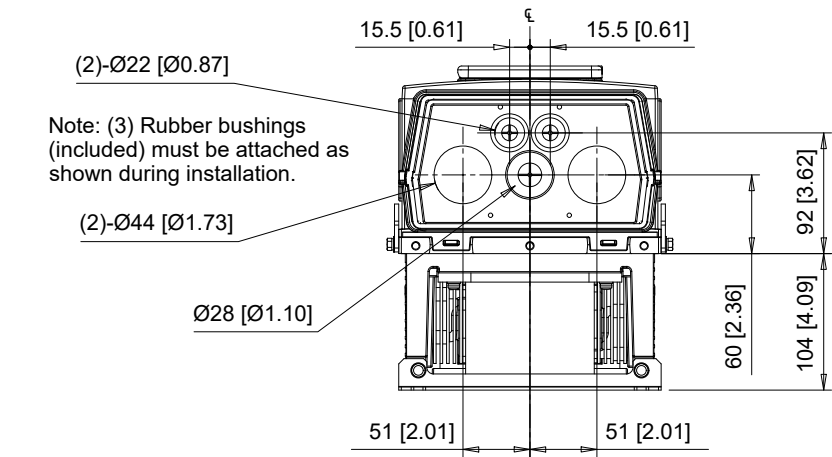
(4) Mounting Holes for M6 [1/4"] Screws. See Detail A for top mounting hole dimensions.

(2)-Lifting Holes Ø20 [Ø0.79]  
Note: Spreader bar required to avoid damage during lifting

Center of Gravity  
Note: Dimensions shown are measured from the bottom left mounting hole



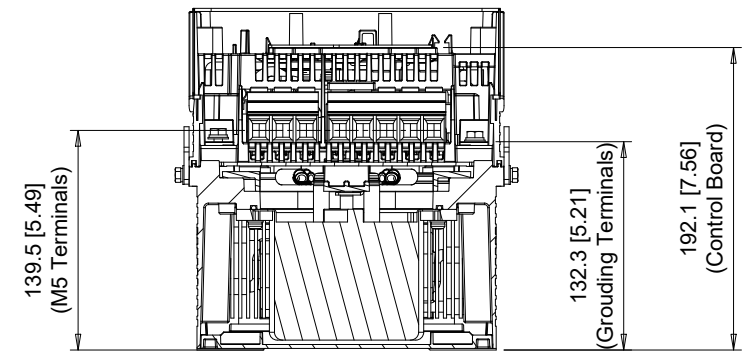
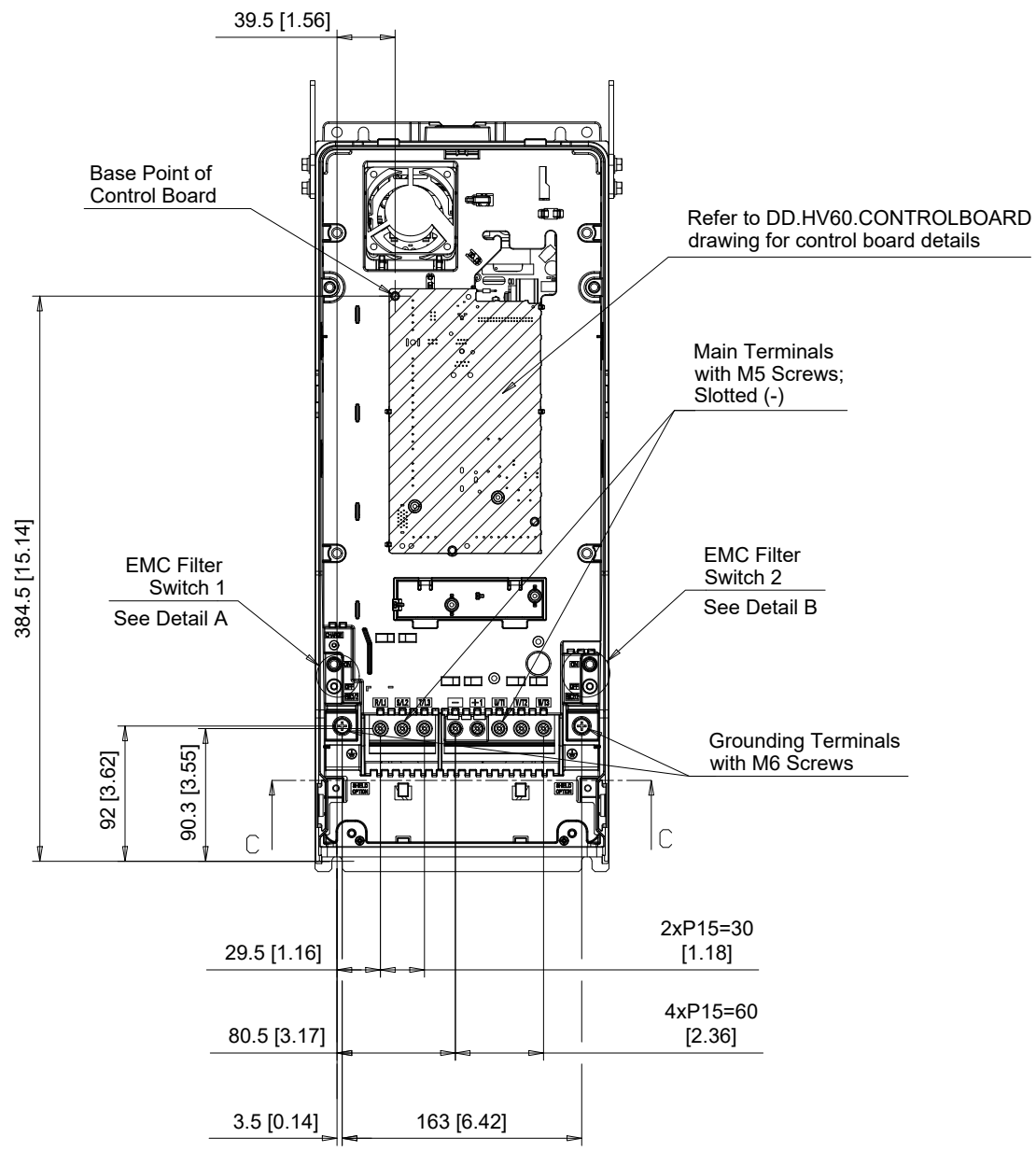
**Detail A**  
Top mounting hole dimensions  
Scale 1:1



Note: (3) Rubber bushings (included) must be attached as shown during installation.

C/C: HV60□	INPUT VOLTAGE 3-PHASE (VAC)	WEIGHT Kg (lb)	COOLING FANS
2046□□□	200 TO 240	15 (33.1)	1
2059□□□		16 (35.3)	1
4040□□□	380 TO 480	16 (35.3)	1
4052□□□		18 (39.7)	1
4065□□□		20 (44.1)	1

□ denotes A-Z

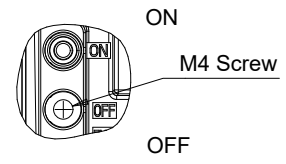


Section C-C

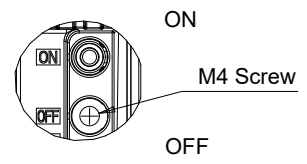
EMC FILTER SWITCHES

EMC SW1

EMC SW2



Detail A  
Scale 1:2



Detail B  
Scale 1:2

C/C: HV60□	TERMINAL SYMBOL	WIRE RANGE AWG (mm <sup>2</sup> )	TERMINAL SCREW	CLAMPING TORQUE N.m. (lb.in.)
2046□□□	R/L1, S/L2, T/L3	8 - 2 (10 - 35)	M5	4.5 (40)
2059□□□	U/T1, V/T2, W/T3	8 - 2 (10 - 35)	M5	4.5 (40)
4040□□□	-, +1	8 - 2 (10 - 35)	M5	4.5 (40)
4052□□□	⊕	14 - 4 (2.5 - 25)	M6	4.0 - 5.0 (35 - 44)
4065□□□				

□ Denotes A-Z

Note: Refer to applicable codes and standards for proper wire type and size.



UNITS MM [IN]  
SCALE 1:5

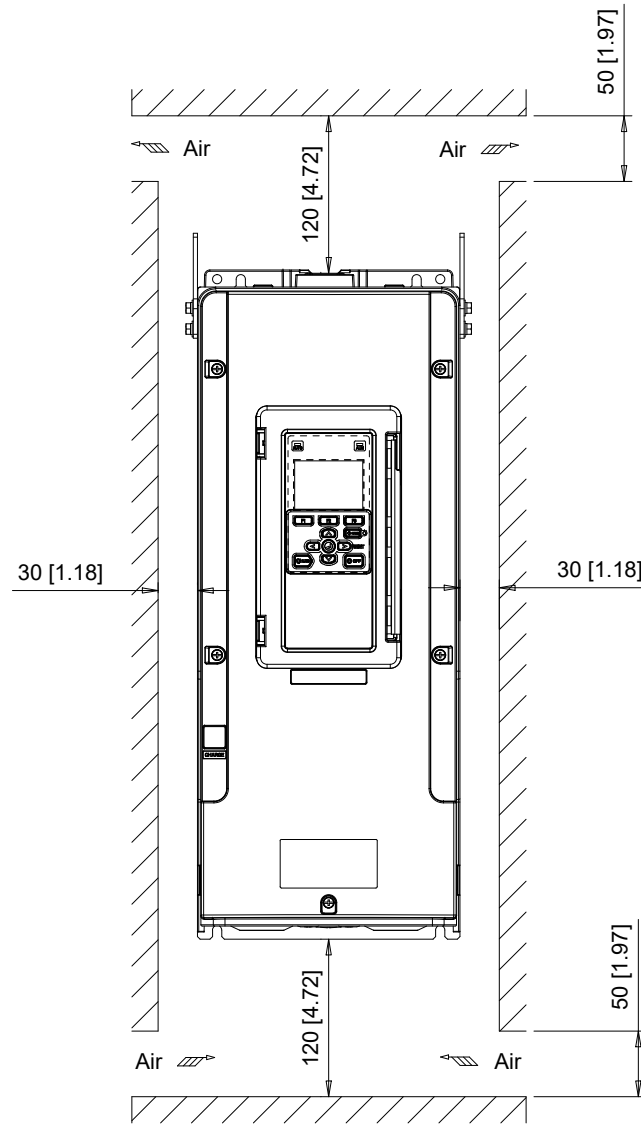
DRWN. J. MATTAS 10-2-19  
CHKD. J. PIOTROWSKI 10-18-19  
TECH. L. UDDIN 10-21-19  
APRV. J. CAIRO 10-22-19

TITLE  
HV600 DIMENSION DRAWING  
FRAME SIZE 3  
IP55/UL TYPE 12 ENCLOSURE

SIZE A PAGE 2 OF 3  
DWG.NO. DD.HV60.FR3.T12

REV 0

Minimum Installation Clearances



Note:  
For alternate mounting configurations, consult manual.

**YASKAWA**

UNITS MM [IN]	
SCALE 1:6	

DRWN.	J. MATTAS	10-2-19
CHKD.	J. PIOTROWSKI	10-18-19
TECH.	L. UDDIN	10-21-19
APRV.	J. CAIRO	10-22-19

TITLE	
HV600 DIMENSION DRAWING	
FRAME SIZE 3	
IP55/UL TYPE 12 ENCLOSURE	

SIZE A	PAGE 3 OF 3
DWG.NO.	
DD.HV60.FR3.T12	

REV	
0	