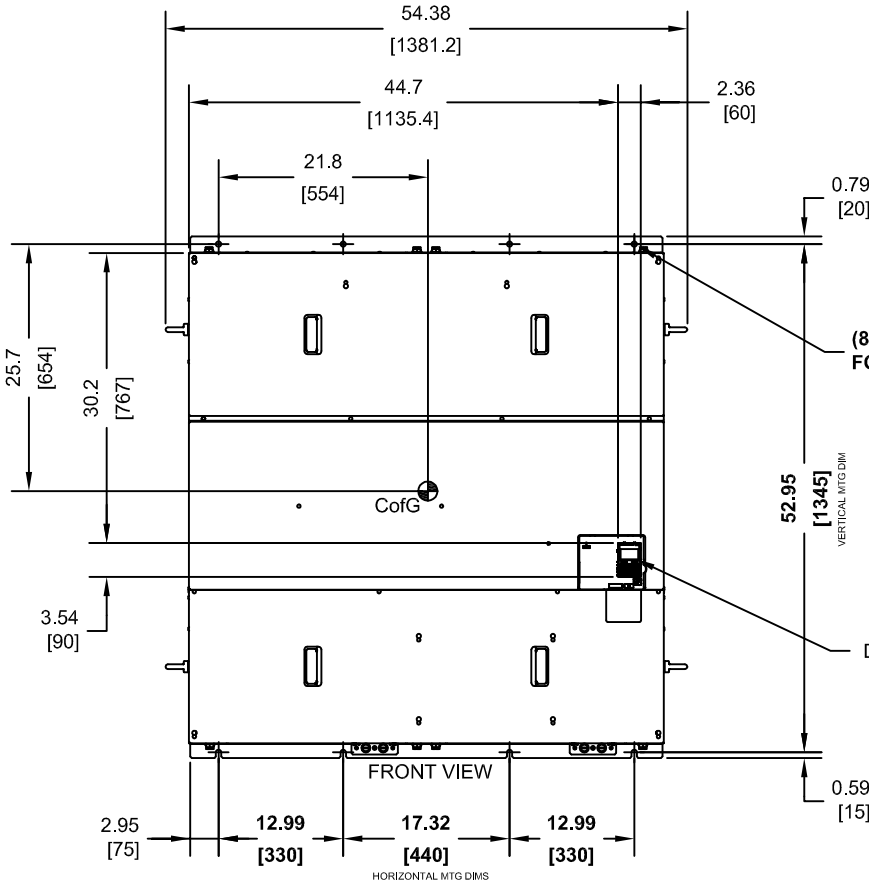
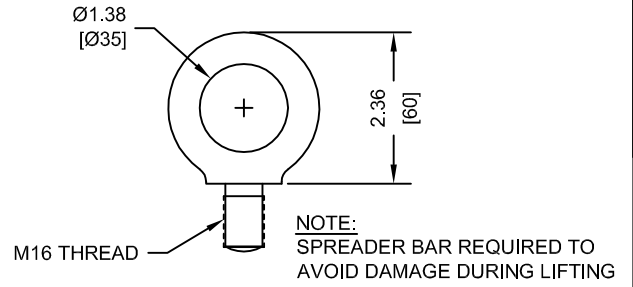


(6) EXTERNAL COOLING FANS

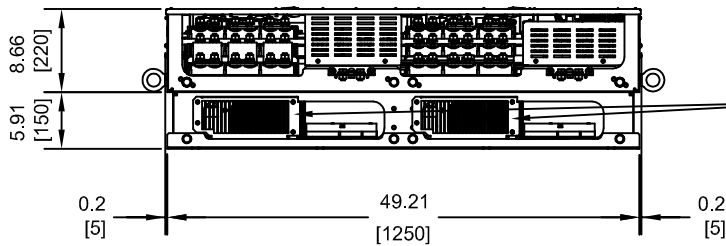
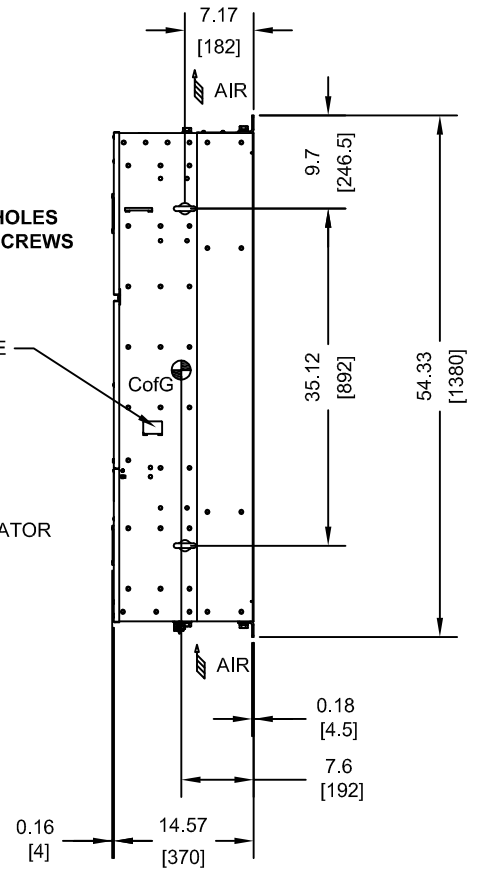
LIFTING AND EYEBOLT DETAILS



(8)-MOUNTING HOLES FOR 1/2" [M12] SCREWS

NAMEPLATE

DIGITAL OPERATOR



OPTIONAL CAPACITOR COVERS
WHEN USING AN EXTERNAL MOUNT HEATSINK, UL COMPLIANCE REQUIRES COVERING EXPOSED CAPACITORS IN THE MAIN CIRCUIT TO PREVENT INJURY. CONSULT MANUAL FOR DETAILS.

MODEL # CIMR-PU	VOLTAGE THREE-PHASE (VAC)	OUTPUT CURRENT (A)	WEIGHT LBS (Kg)	HEAT LOSS (W) (Fc=2kHz)		
				INT	EXT	TOT
4A0930AXX	380/480	930	1195 (543)	2952	8476	11428
4A1200AXX		1200	1221 (555)	3612	8572	12184

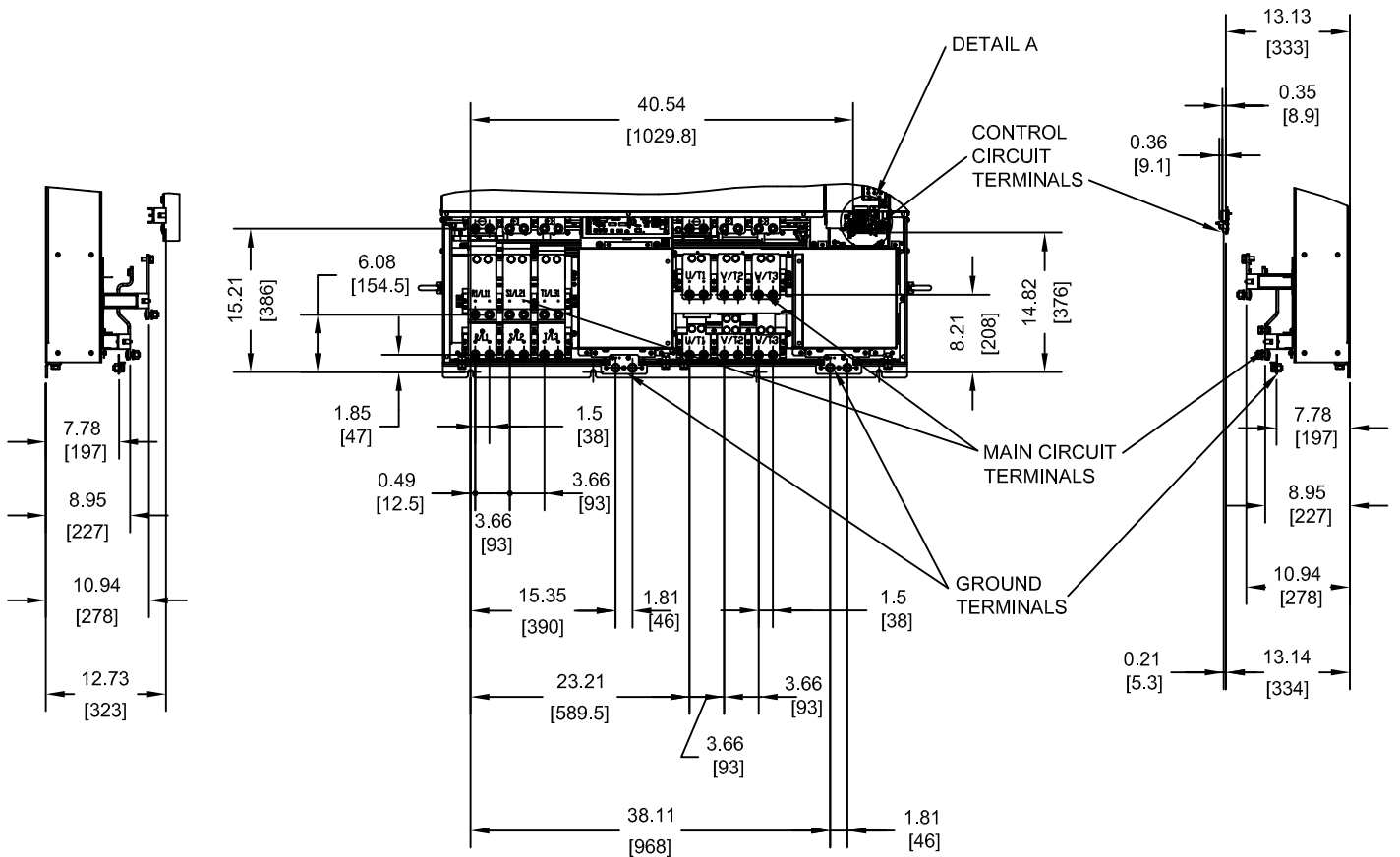
NOTES:
XX DENOTES AA-ZZ

INT=INTERNAL COMPONENTS
EXT=EXTERNAL HEATSINK
TOT=TOTAL

FOR ADDITIONAL DETAILS AND SPECIFICATIONS, CONSULT MANUAL

TOLERANCES / REFERENCES:		DRAWN:	J. MATTAS	DATE:	11-20-13	TITLE:					
		CHECKED:	J. PIOTROWSKI	DATE:	11-25-13	P1000 DIMENSION DRAWING					
		TECH:	J. BORJA	DATE:	12-3-13	FRAME SIZE 15					
		APPROVED:	J. CAIRO	DATE:	12-9-13	IP00 ENCLOSURE					
UNITS:	SCALE:	ORIGINAL DESIGN:	-	DATE:	-	SIZE:	A	REVISION:	R00	PAGE:	1 of 3
IN [mm]	1:20	WITHOUT THE EXPRESS WRITTEN CONSENT OF YASKAWA AMERICA, INC.			DRAWING #:			DD.P1K.FR15.IP00			

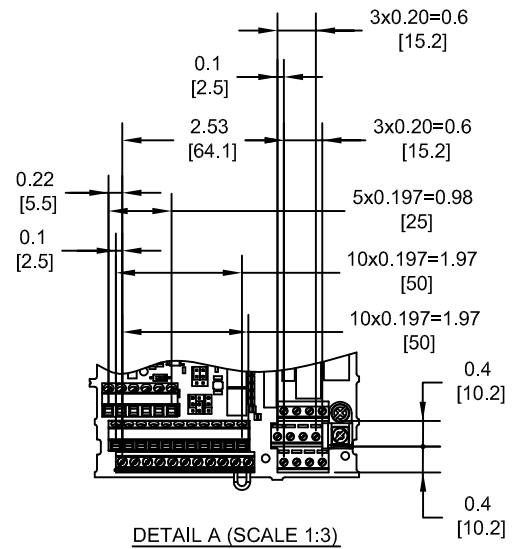
TERMINAL AND WIRING DETAILS (SCALE 1:20)



TERMINAL AND WIRE SPECIFICATIONS FOR MAIN CIRCUIT AND GROUND

MODEL # CIMR-PU	TERMINAL SYMBOL	TERMINAL SCREW	CLAMPING TORQUE lb.in.(N.m.)
4A0930 4A1200	R/L1, S/L2, T/L3	M12	283.2 TO 354.0 (32 TO 40)
	U/T1, V/T2, W/T3		
	⊖, ⊕1		
	⊕3	M12	
	⊕	M12	

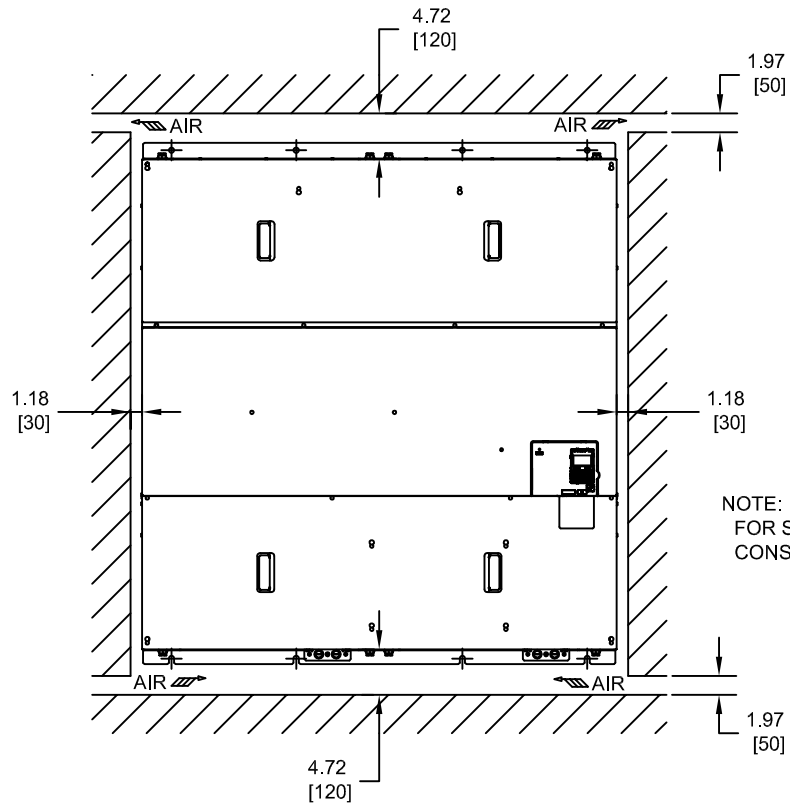
NOTE: REFER TO APPLICABLE CODES FOR PROPER WIRE TYPE AND SIZE



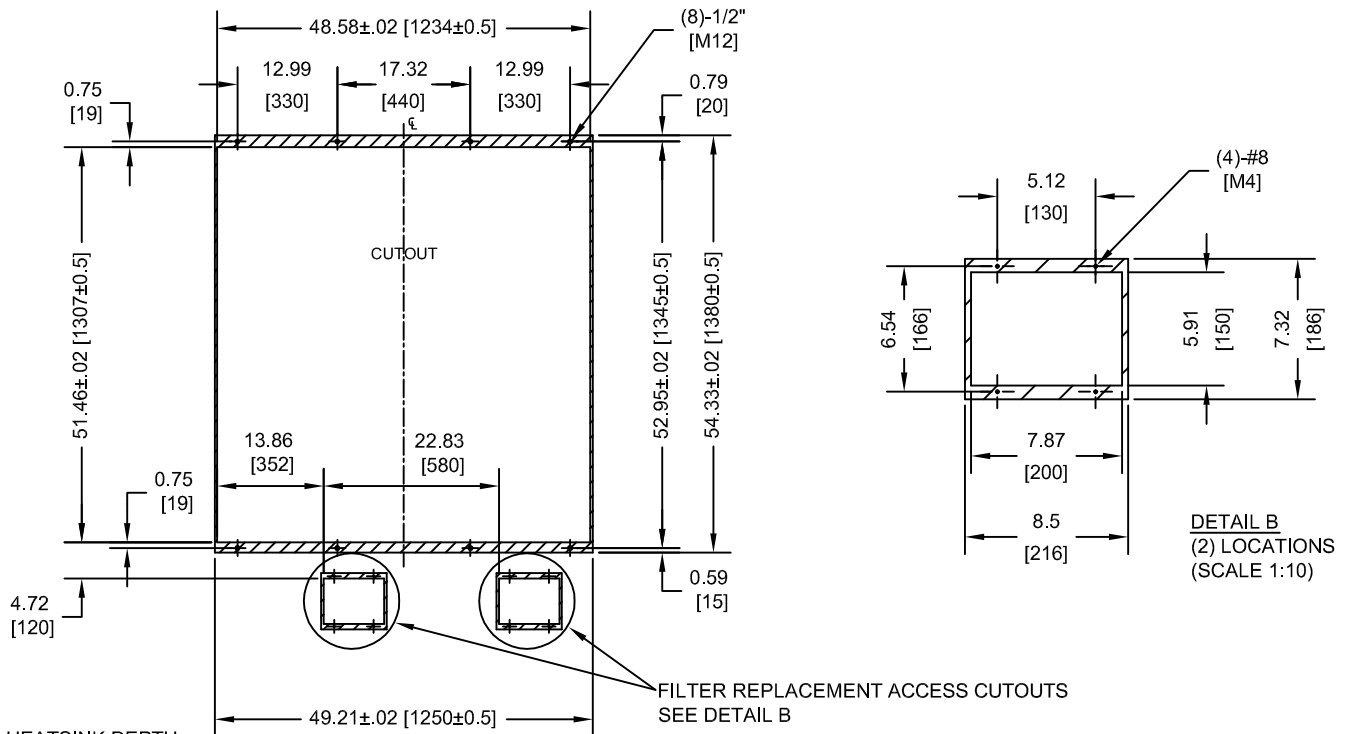
FOR ADDITIONAL DETAILS AND SPECIFICATIONS, CONSULT MANUAL

TOLERANCES / REFERENCES:			DRAWN: J. MATTAS 11-20-13	DATE: 11-20-13	TITLE: P1000 DIMENSION DRAWING FRAME SIZE 15 IP00 ENCLOSURE 4A0930 AND 4A1200		
			CHECKED: J. PIOTROWSKI 11-25-13	DATE: 11-25-13			
		TECH: J. BORJA 12-3-13	DATE: 12-3-13	SIZE: A	REVISION: R00	PAGE: 2 of 3	
		APPROVED: J. CAIRO 12-9-13	DATE: 12-9-13	DRAWING #: DD.P1K.FR15.IP00			
UNITS: IN[mm]	SCALE: BY VIEW	THIS DOCUMENT AND INFORMATION CONTAINED IN IT ARE CONFIDENTIAL, AND CANNOT BE COPIED OR DISCLOSED IN WHOLE OR IN PART WITHOUT THE EXPRESS WRITTEN CONSENT OF YASKAWA AMERICA, INC.		ORIGINAL DESIGN: -	DATE: -		

MINIMUM INSTALLATION CLEARANCES (SCALE 1:20)



PANEL CUTOUT FOR EXTERNAL HEATSINK MOUNTING CONFIGURATION (SCALE 1:25)



NOTE:
EXPOSED HEATSINK DEPTH
D=5.91" MINUS PANEL THICKNESS

FOR ADDITIONAL DETAILS AND SPECIFICATIONS, CONSULT MANUAL

TOLERANCES / REFERENCES:			DRAWN: J. MATTAS DATE: 11-20-13	TITLE: P1000 DIMENSION DRAWING FRAME SIZE 15 IP00 ENCLOSURE 4A0930 AND 4A1200		
THIS DOCUMENT AND INFORMATION CONTAINED IN IT ARE CONFIDENTIAL, AND CANNOT BE COPIED OR DISCLOSED IN WHOLE OR IN PART WITHOUT THE EXPRESS WRITTEN CONSENT OF YASKAWA AMERICA, INC.			CHECKED: J. PIOTROWSKI DATE: 11-25-13	TECH: J. BORJA DATE: 12-3-13	SIZE: A	REVISION: R00
UNITS: IN [mm]	SCALE: BY VIEW	APPROVED: J. CAIRO DATE: 12-9-13	ORIGINAL DESIGN: -	DATE: -	DRAWING #: DD.P1K.FR15.IP00	