

TOLERANCES / REFERENCES:

YASKAWA

THIS DOCUMENT AND INFORMATION CONTAINED IN IT ARE CONFIDENTIAL, AND CANNOT BE COPIED OR DISCLOSED IN WHOLE OR IN PART WITHOUT THE EXPRESS WRITTEN CONSENT OF YASKAWA AMERICA, INC.

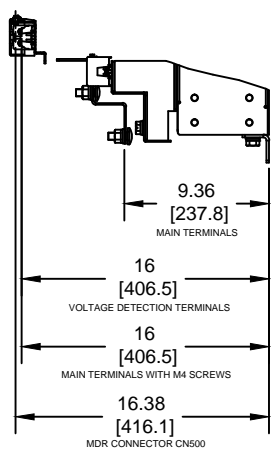
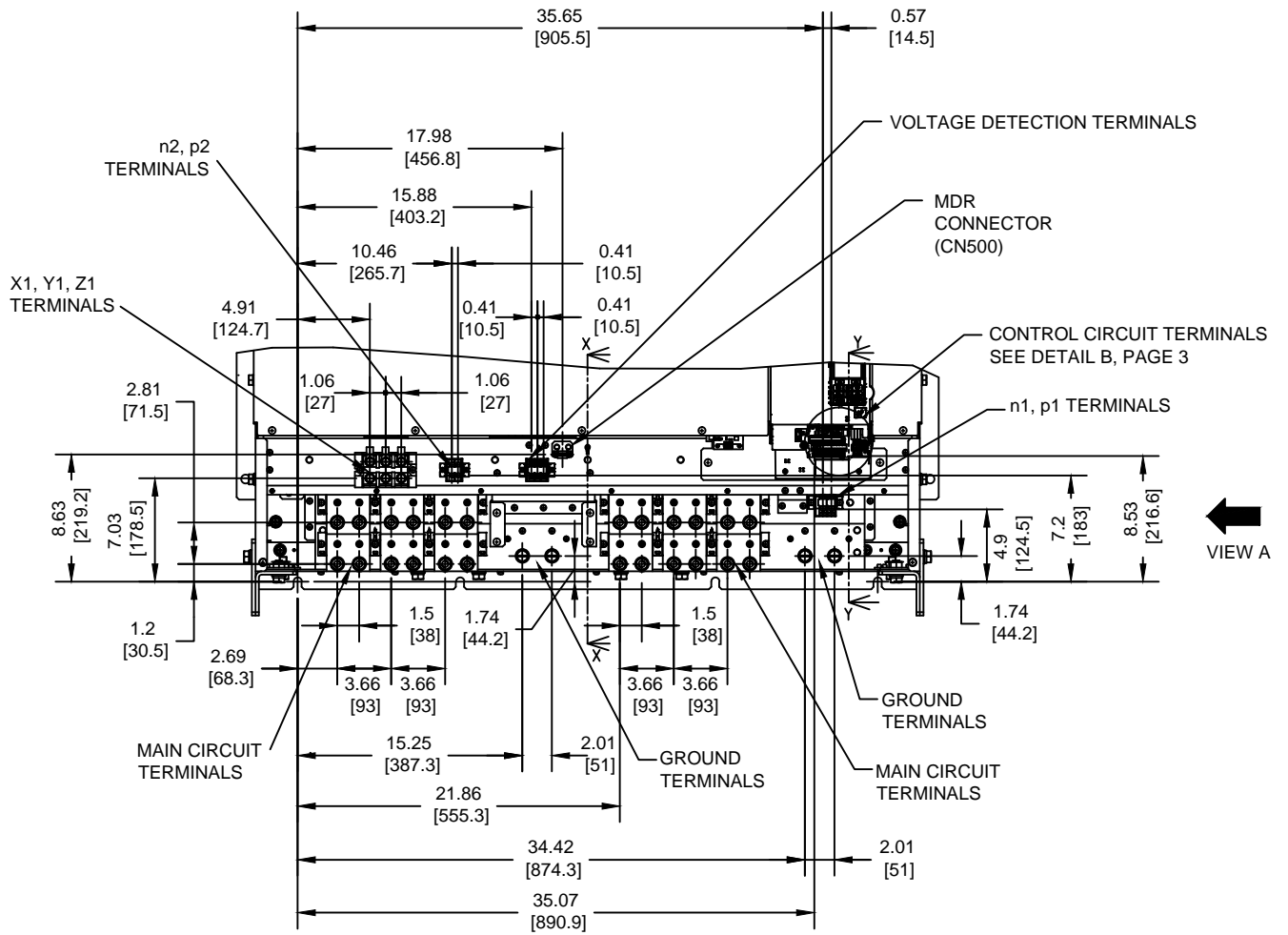
DRAWN: J. MATTAS	DATE 10-20-16
CHECKED: J. PIOTROWSKI	DATE 10-27-16
TECH: J. BORJA	DATE 11-2-16
APPROVED: J. CAIRO	DATE 11-16-16
ORIGINAL DESIGN: -	DATE -

TITLE: U1000 DIMENSION DRAWING FRAME SIZE 7 IP00 ENCLOSURE 4□0720, 4□0900 AND 4□0930			
SIZE A	REVISION R00	PAGE 1 of 4	
DRAWING #: DD.U1K.FR7.IP00			

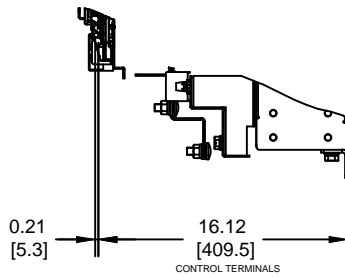
UNITS:
IN[mm]

SCALE:
1:25

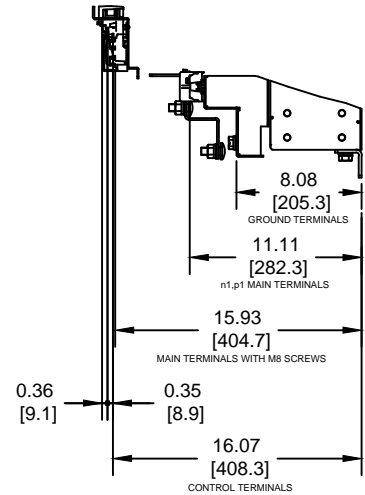
TERMINAL AND WIRING DETAILS (SCALE 1:12)



SECTION X-X



SECTION Y-Y



VIEW A

TOLERANCES / REFERENCES:

YASKAWA

THIS DOCUMENT AND INFORMATION CONTAINED IN IT ARE CONFIDENTIAL, AND CANNOT BE COPIED OR DISCLOSED IN WHOLE OR IN PART WITHOUT THE EXPRESS WRITTEN CONSENT OF YASKAWA AMERICA, INC.

DRAWN: J. MATTAS

DATE: 10-20-16

CHECKED: J. PIOTROWSKI

DATE: 10-27-16

TECH: J. BORJA

DATE: 11-2-16

APPROVED: J. CAIRO

DATE: 11-16-16

ORIGINAL DESIGN: -

DATE: -

TITLE: U1000 DIMENSION DRAWING
FRAME SIZE 7
IP00 ENCLOSURE
4□0720, 4□0900 AND 4□0930

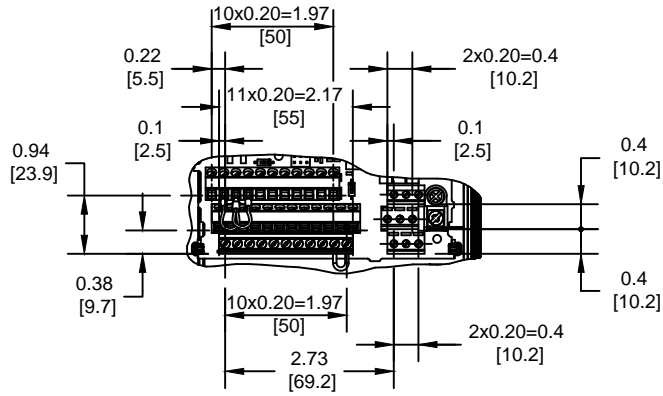
SIZE: A	REVISION: R00	PAGE: 2 of 4
---------	---------------	--------------

DRAWING #: DD.U1K.FR7.IP00

UNITS: IN[mm] SCALE: BY VIEW

TERMINAL AND WIRING DETAILS (CONTINUED)

DETAIL B (SCALE 1:3)
CONTROL CIRCUIT
TERMINALS



TERMINAL AND WIRE SPECIFICATIONS FOR
MAIN CIRCUIT AND GROUND

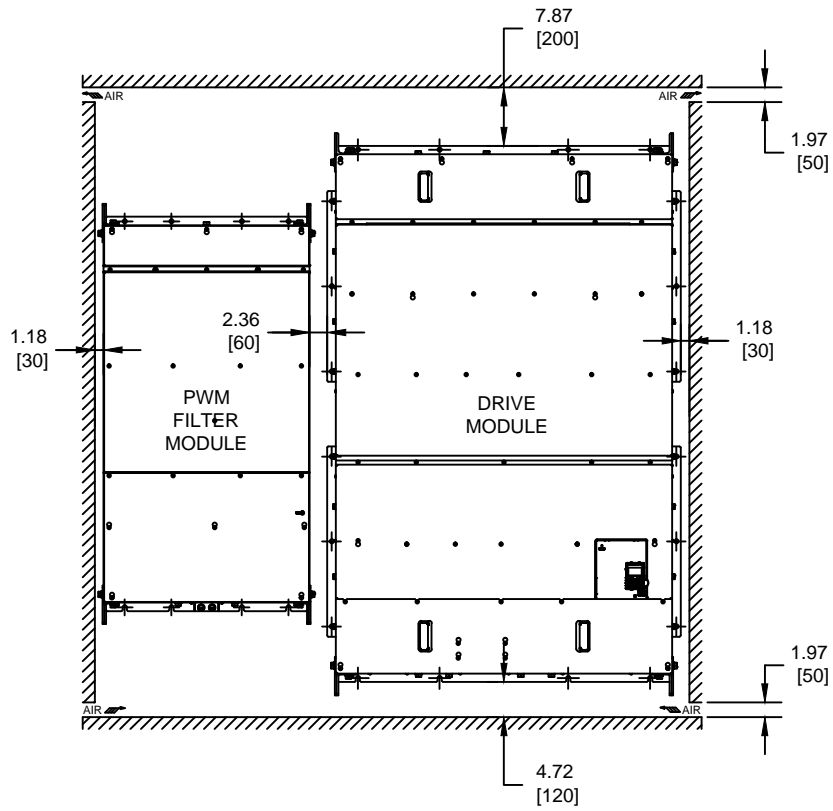
MODEL # CIMR-UU	TERMINAL SYMBOL	TERMINAL SCREW	CLAMPING TORQUE lb.in.(N.m.)
4□0720 4□0900 4□0930	X, Y, Z	M12	278 TO 347 (31.4 TO 39.2)
	U/T1, V/T2, W/T3		
	⊕		
	X1, Y1, Z1	M8	47.8 TO 53.0 (5.4 TO 6.0)
	r1, s1, t1	M4	10.4 TO 17.4 (1.2 TO 2.0)
	p1, n1	M5	17.4 TO 21.7 (2.0 TO 2.5)
	p2, n2	M4	10.4 TO 17.4 (1.2 TO 2.0)

NOTE: REFER TO APPLICABLE CODES FOR PROPER WIRE TYPE AND SIZE

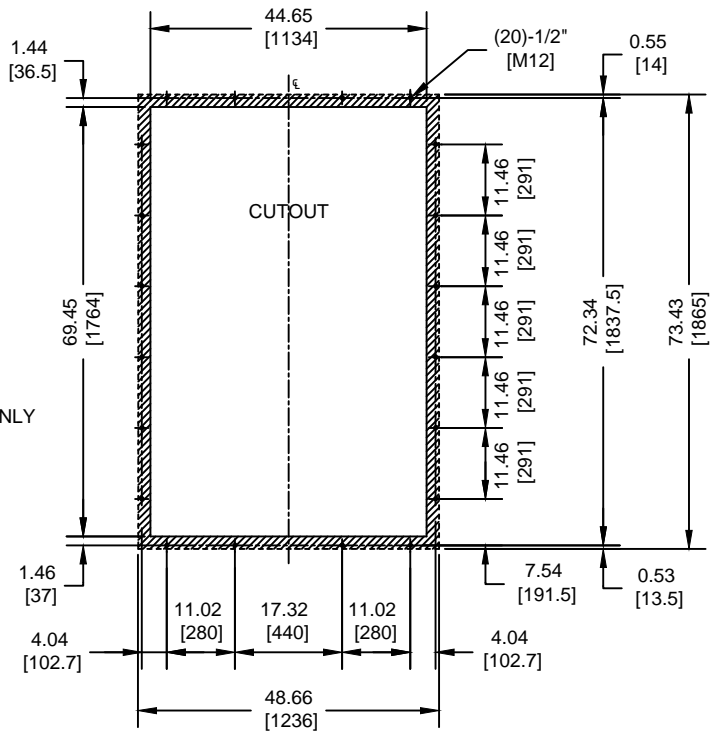
FOR ADDITIONAL DETAILS AND SPECIFICATIONS, CONSULT MANUAL

TOLERANCES / REFERENCES:		YASKAWA	DRAWN: J. MATTAS	DATE 10-20-16	TITLE: U1000 DIMENSION DRAWING		
			CHECKED: J. PIOTROWSKI	DATE 10-27-16	FRAME SIZE 7 IP00 ENCLOSURE		
		TECH: J. BORJA		DATE 11-2-16	4□0720, 4□0900 AND 4□0930		
		APPROVED: J. CAIRO		DATE 11-16-16	SIZE A	REVISION R00	PAGE 3 of 4
UNITS: IN[mm]	SCALE: BY VIEW	ORIGINAL DESIGN: -		DATE -	DRAWING #: DD.U1K.FR7.IP00		
		THIS DOCUMENT AND INFORMATION CONTAINED IN IT ARE CONFIDENTIAL, AND CANNOT BE COPIED OR DISCLOSED IN WHOLE OR IN PART WITHOUT THE EXPRESS WRITTEN CONSENT OF YASKAWA AMERICA, INC.					

MINIMUM INSTALLATION CLEARANCES (SCALE 1:25)



PANEL CUTOUT FOR EXTERNAL HEATSINK MOUNTING CONFIGURATION (SCALE 1:30)



NOTES:

1. CUTOUT DETAIL IS FOR DRIVE MODULE ONLY
2. CUTOUT TOLERANCE: ± 0.02 " [± 0.5 MM]
3. EXPOSED HEATSINK RECOMMENDED CLEARANCE $D=6.69$ " MINUS PANEL THICKNESS

FOR ADDITIONAL DETAILS AND SPECIFICATIONS, CONSULT MANUAL

TOLERANCES / REFERENCES:		YASKAWA	DRAWN: J. MATTAS	DATE 10-20-16	TITLE: U1000 DIMENSION DRAWING		
			CHECKED: J. PIOTROWSKI	DATE 10-27-16	FRAME SIZE 7 IP00 ENCLOSURE		
		TECH: J. BORJA		DATE 11-2-16	4□0720, 4□0900 AND 4□0930		
		APPROVED: J. CAIRO		DATE 11-16-16	SIZE A	REVISION R00	PAGE 4 of 4
UNITS: IN[mm]	SCALE: BY VIEW	ORIGINAL DESIGN: -		DATE -	DRAWING #: DD.U1K.FR7.IP00		
		THIS DOCUMENT AND INFORMATION CONTAINED IN IT ARE CONFIDENTIAL, AND CANNOT BE COPIED OR DISCLOSED IN WHOLE OR IN PART WITHOUT THE EXPRESS WRITTEN CONSENT OF YASKAWA AMERICA, INC.					