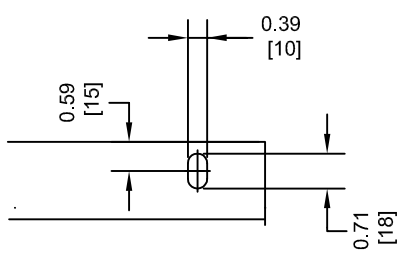


4x Mounting Holes for 5/16" [M8] Screw

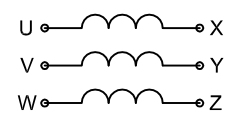
6x Terminals for 5/16" [M8] Screw

4x 20Dia. Lifting hole



Mounting hole specifications

ELECTRICAL DIAGRAM



PART #	VOLTAGE (VAC)	CURRENT (A)	INDUCTANCE (mH)	FREQUENCY (Hz)	WEIGHT LBS (Kg)	HEAT LOSS (W)
URX000454	264	83	0.44	50/60	83.6 (38)	270

FOR ADDITIONAL DETAILS AND SPECIFICATIONS, CONSULT MANUAL

TOLERANCES / REFERENCES:		<p>THIS DOCUMENT AND INFORMATION CONTAINED IN IT ARE CONFIDENTIAL, AND CANNOT BE COPIED OR DISCLOSED IN WHOLE OR IN PART WITHOUT THE EXPRESS WRITTEN CONSENT OF YASKAWA AMERICA, INC.</p>	DRAWN: J. MATTAS CHECKED: J. PIOTROWSKI TECH: J. BORJA APPROVED: J. CAIRO ORIGINAL DESIGN: -	DATE 8-6-14 DATE 9-15-14 DATE 9-17-14 DATE 9-22-14 DATE -	TITLE: D1000 INPUT AC REACTOR DIMENSION DRAWING URX000454
UNITS: IN [mm]	SCALE: 1: 4		SIZE A	REVISION R00	PAGE 1 of 1
			DRAWING #: DD.URX000454		