

A

B

C

D

E

F

G

H

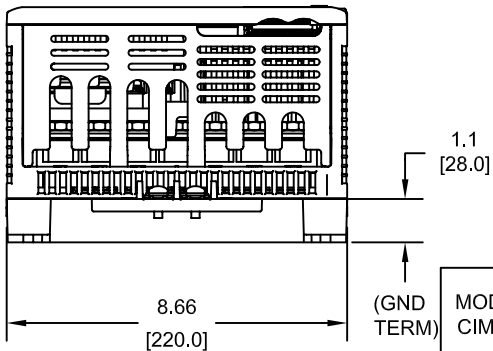
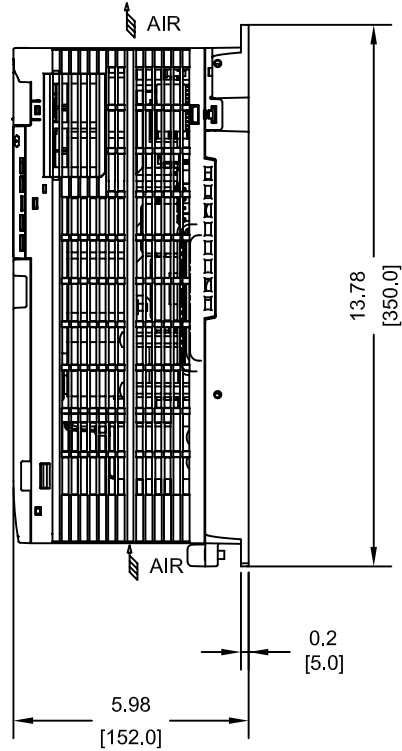
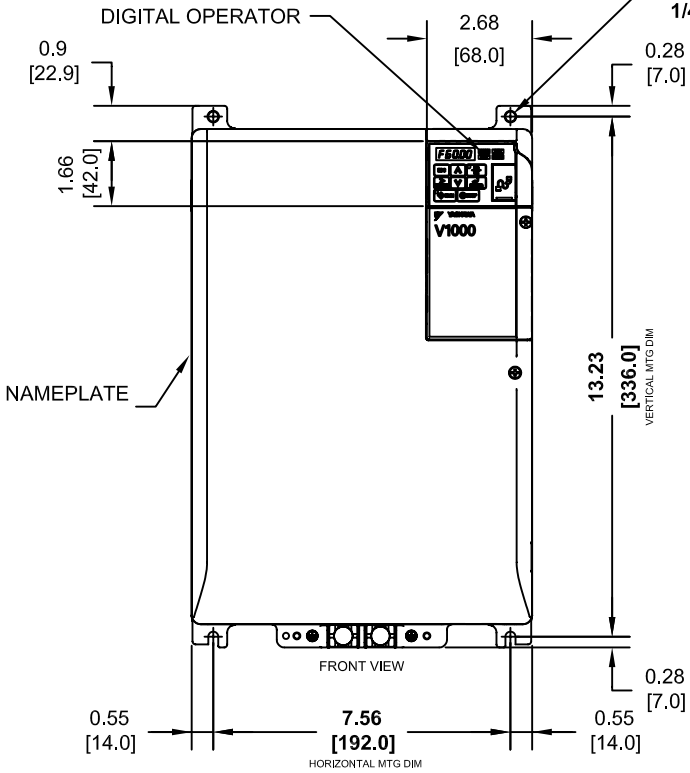
I

J

FINLESS HEATSINK



(4)-MOUNTING HOLES FOR 1/4" [M6] SCREWS



MODEL # CIMR-VU	VOLTAGE THREE PHASE (VAC)	OUTPUT CURRENT (A)		WEIGHT LBS (Kg)	HEAT LOSS (W)					
					ND (Fc=2kHz)			HD (Fc=8kHz)		
		ND	HD		INT	EXT	TOT	INT	EXT	TOT
2A0069JXX	208/240	69.0	60.0	15.4 (7.0)	184.5	461.7	646.2	151.4	437.7	589.1

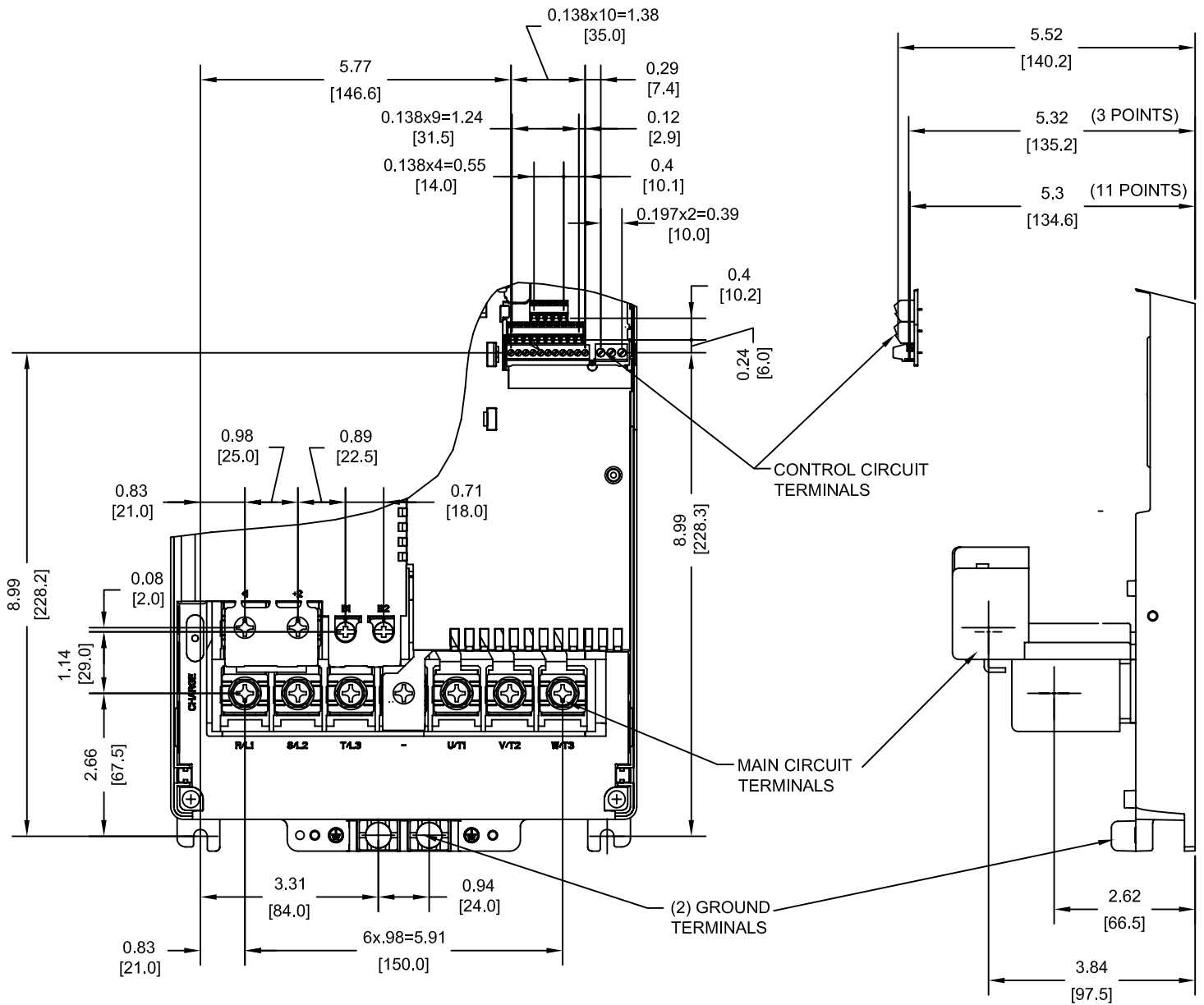
NOTE:
XX DENOTES AA-ZZ

INT=INTERNAL COMPONENTS
EXT=EXTERNAL HEATSINK
TOT=TOTAL

FOR ADDITIONAL DETAILS AND SPECIFICATIONS, CONSULT MANUAL

TOLERANCES / REFERENCES:		<p>YASKAWA The Drive for Quality™</p> <p><i>THIS DOCUMENT AND INFORMATION CONTAINED IN IT ARE CONFIDENTIAL, AND CANNOT BE COPIED OR DISCLOSED IN WHOLE OR IN PART WITHOUT THE EXPRESS WRITTEN CONSENT OF YASKAWA ELECTRIC AMERICA INC.</i></p>	DRAWN: J. MATTAS DATE 1-9-09	DATE 1-9-09	TITLE: V1000 DIMENSION DRAWING FRAME SIZE 11 FINLESS HEATSINK 2A0069J		
UNITS: IN[mm]	SCALE: 1:5		CHECKED: J. PIOTROWSKI DATE 4-27-09	DATE 4-27-09			
			TECH: J. CAIRO DATE 7-7-09	DATE 7-7-09			
			APPROVED: T. SASADA DATE 7-8-09	DATE 7-8-09			
		ORIGINAL DESIGN: -	DATE -	DRAWING #: DD.V1K.FR11.FNL.01	SIZE A	REVISION R00	PAGE 1 of 3

TERMINAL AND WIRING DETAILS (SCALE 1:3)



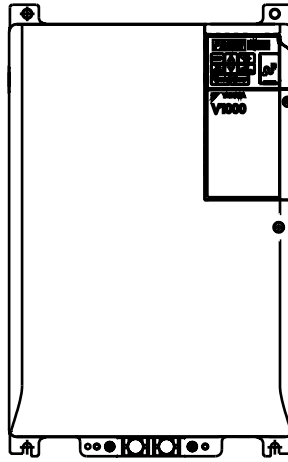
TERMINAL AND WIRE SPECIFICATIONS FOR
 MAIN CIRCUIT AND GROUND

MODEL # CIMR-VU	TERMINAL SYMBOL	TERMINAL SCREW	CLAMPING TORQUE lb.in.(N.m.)	WIRE RANGE AWG(mm ²)
2A0069J	R/L1, S/L2, T/L3, ⊖, ⊕1, ⊕2, U/T1, V/T2, W/T3	M8	79.7 TO 97.4 (9 TO 11)	10-2 (5.5-38)
	B1, B2	M5	17.7 TO 22.1 (2 TO 2.5)	8-6 (8-14)
	⊕	M6	35.4 TO 53.1 (4 TO 6)	8-4 (8-22)

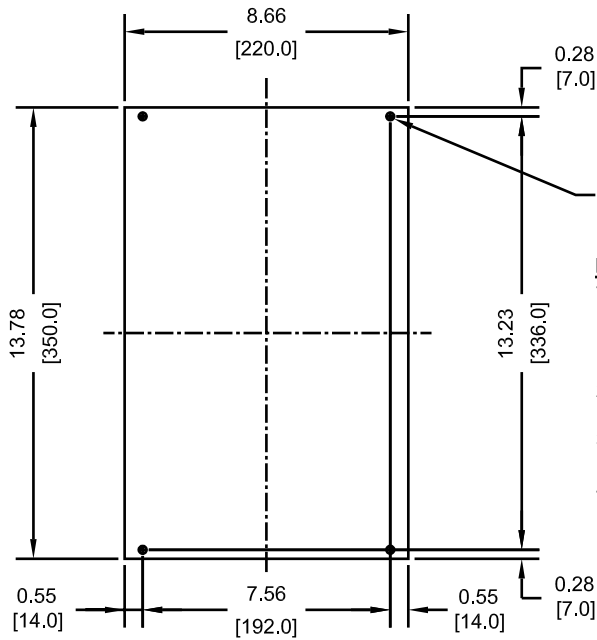
NOTE: RATINGS APPLY TO BOTH FACTORY AND FIELD WIRING
 REFER TO APPLICABLE CODES FOR PROPER WIRE TYPE AND SIZE

FOR ADDITIONAL DETAILS AND SPECIFICATIONS, CONSULT MANUAL

TOLERANCES / REFERENCES:		DRAWN: J. MATTAS	DATE 1-9-09	TITLE: V1000 DIMENSION DRAWING FRAME SIZE 11 FINLESS HEATSINK 2A0069J		
		CHECKED: J. PIOTROWSKI	DATE 4-27-09			
		TECH: J. CAIRO	DATE 7-7-09			
		APPROVED: T. SASADA	DATE 7-8-09			
UNITS: IN[mm]	SCALE: BY VIEW	ORIGINAL DESIGN: -	DATE -	SIZE A	REVISION R00	PAGE 2 of 3
				DRAWING #: DD.V1K.FR11.FNL.01		



MOUNTING DIMENSIONS (SCALE 1:6)



(4)-MOUNTING HOLES FOR 1/4"[M6] SCREWS

NOTES:

1. MOUNTING PLATE PROPERTIES
 - FLATNESS SHALL NOT EXCEED 0.2mm
 - ROUGHNESS SHALL NOT EXCEED 25S
 - TEMP. SHALL NOT EXCEED 90C (194F)
2. APPLY THERMAL COMPOUND BETWEEN HEATSINK AND MOUNTING PLATE.
3. MOUNTING SCREW TORQUE
 - 4.0-5.0 Nm (2.95-3.69 ft-lbf)
4. SEE MANUAL FOR COMPLETE DETAILS

J. PIOTROWSKI 4-27-09 FRAME SIZE 11

THIS DOCUMENT AND INFORMATION CONTAINED IN IT ARE CONFIDENTIAL, AND CANNOT BE CLOSED IN WHOLE OR IN PART

7-7-09

7-8-09

R00

DD.V1K.FR11.FNL.01