

MODEL # CIMR-VU	VOLTAGE THREE PHASE (VAC)	OUTPUT CURRENT (A)		WEIGHT LBS (Kg)	HEAT LOSS (W)					
		ND	HD		ND (Fc=2kHz)			HD (Fc=8kHz)		
					INT	EXT	TOT	INT	EXT	TOT
2A0030AXX	208/240	30.0	25.0	7.9 (3.6)	88.9	246.4	335.3	72.2	231.5	303.7
2A0040AXX		40.0	33.0	7.9 (3.6)	112.8	266.7	379.5	82.8	248.5	321.3
4A0018AXX	380/480	17.5	14.8	7.9 (3.6)	80.1	181.2	261.3	62.7	166.0	228.7
4A0023AXX		23.0	18.0	7.9 (3.6)	107.7	213.4	321.1	78.1	207.1	285.2

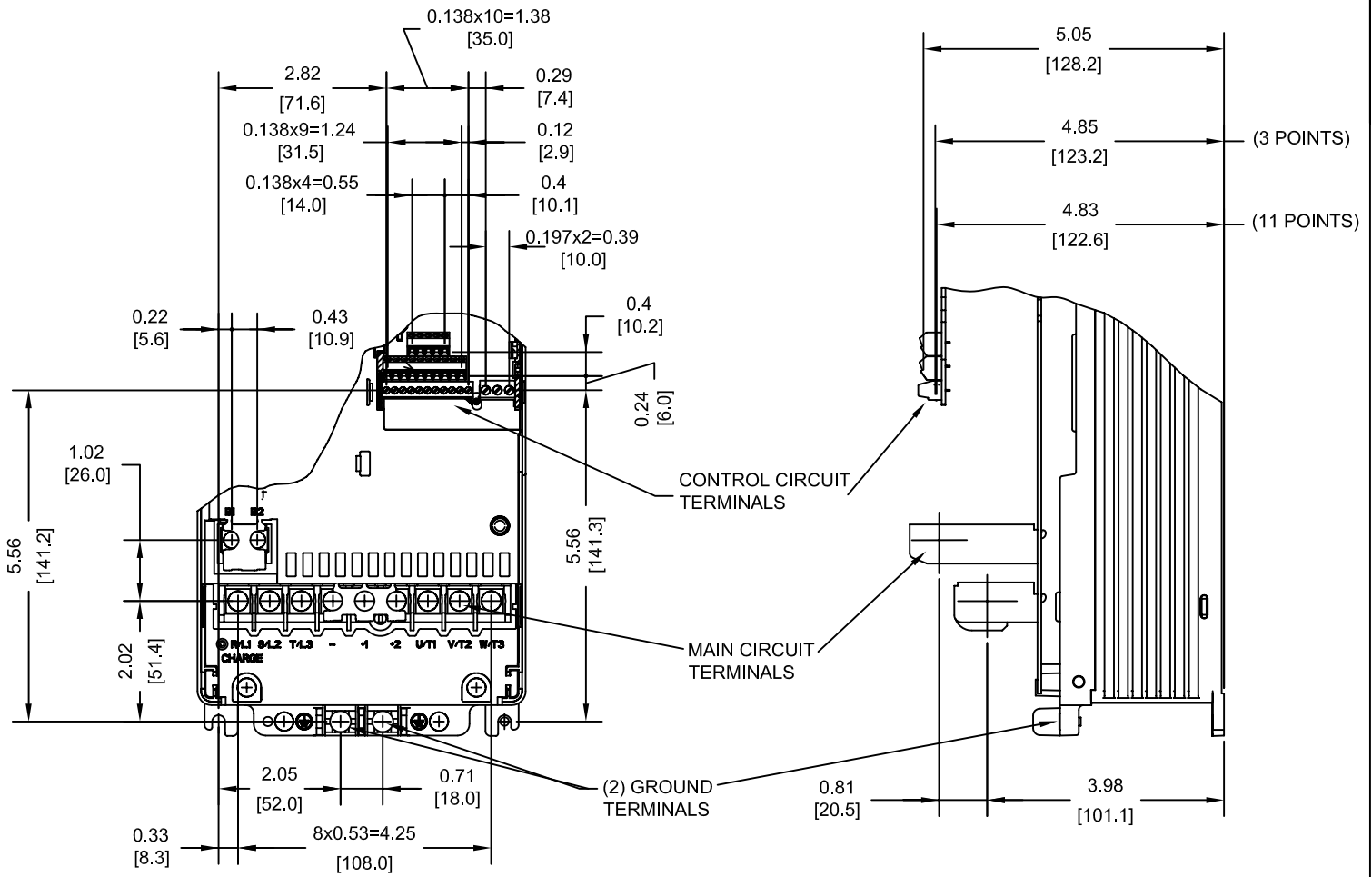
NOTE:
XX DENOTES AA-ZZ

INT=INTERNAL COMPONENTS
EXT=EXTERNAL HEATSINK
TOT=TOTAL

FOR ADDITIONAL DETAILS AND SPECIFICATIONS, CONSULT MANUAL

TOLERANCES / REFERENCES:		<p>THIS DOCUMENT AND INFORMATION CONTAINED IN IT ARE CONFIDENTIAL, AND CANNOT BE COPIED OR DISCLOSED IN WHOLE OR IN PART WITHOUT THE EXPRESS WRITTEN CONSENT OF YASKAWA ELECTRIC AMERICA INC.</p>	DRAWN: J. MATTAS DATE 1-27-09	TITLE: V1000 DIMENSION DRAWING FRAME SIZE 14 OPEN ENCLOSURE (IP00 RATING) 2A0030A, 2A0040A, 4A0018A, 4A0023A
			CHECKED: J. PIOTROWSKI DATE 8-21-09	DATE 8-21-09
			TECH: J. CAIRO DATE 8-24-09	DATE 8-24-09
			APPROVED: T. SASADA DATE 8-28-09	DATE 8-28-09
UNITS: IN [mm]	SCALE: 1:5	ORIGINAL DESIGN: -	DATE -	SIZE A REVISION R00 PAGE 1 of 3 DRAWING #: DD.V1K.FR14.IP00

TERMINAL AND WIRING DETAILS (SCALE 1:3)



TERMINAL AND WIRE SPECIFICATIONS FOR MAIN CIRCUIT AND GROUND

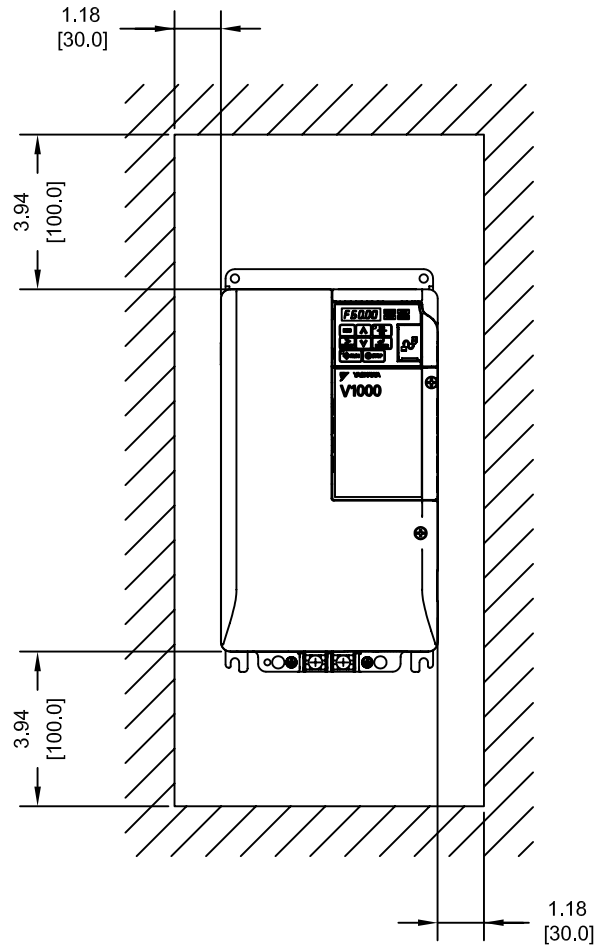
MODEL # CIMR-VU	TERMINAL SYMBOL	TERMINAL SCREW	CLAMPING TORQUE lb.in.(N.m.)	WIRE RANGE AWG(mm)
2A0030A	R/L1, S/L2, T/L3, ⊖, ⊕1, ⊕2, U/T1, V/T2, W/T3	M4	20.4 (2.3)	12-6 (3.5-14)
	B1, B2	M4	20.4 (2.3)	12-10 (3.5-5.5)
	⊕	M5	17.7-22.1 (2.0-2.5)	10-6 (5.5-14)
2A0040A	R/L1, S/L2, T/L3, ⊖, ⊕1, ⊕2, U/T1, V/T2, W/T3	M4	20.4 (2.3)	12-6 (3.5-14)
	B1, B2	M4	20.4 (2.3)	12-10 (3.5-5.5)
	⊕	M5	17.7-22.1 (2.0-2.5)	10-6 (5.5-14)
4A0018A	R/L1, S/L2, T/L3, ⊖, ⊕1, ⊕2, U/T1, V/T2, W/T3	M4	20.4 (2.3)	12-6 (3.5-14)
	B1, B2	M4	20.4 (2.3)	12-10 (3.5-5.5)
	⊕	M5	17.7-22.1 (2.0-2.5)	10-6 (5.5-14)
4A0023A	R/L1, S/L2, T/L3, ⊖, ⊕1, ⊕2, U/T1, V/T2, W/T3	M4	20.4 (2.3)	12-6 (3.5-14)
	B1, B2	M4	20.4 (2.3)	12-10 (3.5-5.5)
	⊕	M5	17.7-22.1 (2.0-2.5)	10-6 (5.5-14)

NOTE: RATINGS APPLY TO BOTH FACTORY AND FIELD WIRING
 REFER TO APPLICABLE CODES FOR PROPER WIRE TYPE AND SIZE

FOR ADDITIONAL DETAILS AND SPECIFICATIONS, CONSULT MANUAL

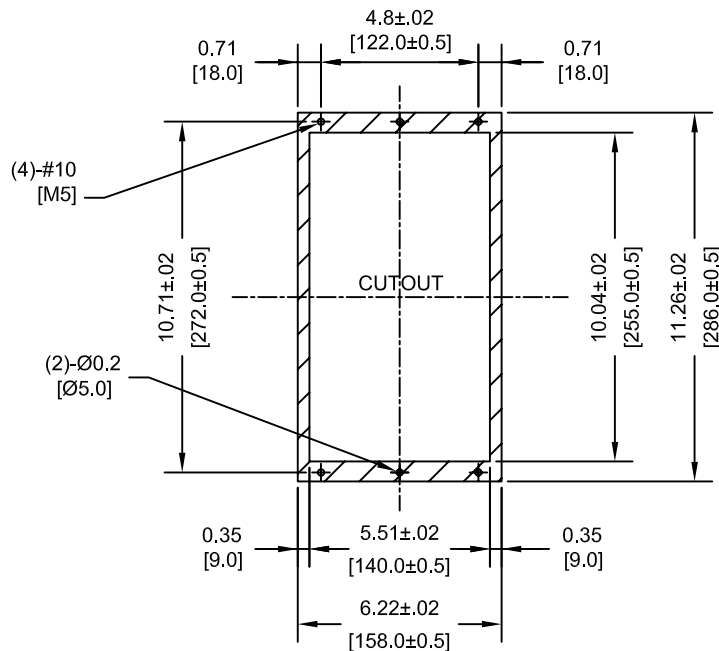
TOLERANCES / REFERENCES:	<p>THIS DOCUMENT AND INFORMATION CONTAINED IN IT ARE CONFIDENTIAL, AND CANNOT BE COPIED OR DISCLOSED IN WHOLE OR IN PART WITHOUT THE EXPRESS WRITTEN CONSENT OF YASKAWA ELECTRIC AMERICA INC.</p>	DRAWN: J. MATTAS	DATE 1-27-09	TITLE: V1000 DIMENSION DRAWING		
		CHECKED: J. PIOTROWSKI	DATE 8-21-09	FRAME SIZE 14		
		TECH: J. CAIRO	DATE 8-24-09	OPEN ENCLOSURE (IP00 RATING)		
		APPROVED: T. SASADA	DATE 8-28-09	2A0030A, 2A0040A, 4A0018A, 4A0023A		
UNITS: IN [mm]	SCALE: BY VIEW	ORIGINAL DESIGN: -	DATE -	SIZE A	REVISION R00	PAGE 2 of 3
				DRAWING #: DD.V1K.FR14.IP00		

MINIMUM INSTALLATION CLEARANCES (SCALE 1:5)



NOTE:
FOR SIDE-BY-SIDE MOUNTING
CONSULT MANUAL

PANEL CUTOUT FOR EXTERNAL HEATSINK
MOUNTING CONFIGURATION (SCALE 1:6)



NOTES:
1. EXTERNAL HEATSINK
CONFIGURATION REQUIRES
MOUNTING KIT
2. EXPOSED HEATSINK
RECOMMENDED CLEARANCE
D=2.36" MINUS PANEL THICKNESS

TOLERANCES / REFERENCES:		<p>YASKAWA The Drive for Quality™</p> <p>THIS DOCUMENT AND INFORMATION CONTAINED IN IT ARE CONFIDENTIAL, AND CANNOT BE COPIED OR DISCLOSED IN WHOLE OR IN PART WITHOUT THE EXPRESS WRITTEN CONSENT OF YASKAWA ELECTRIC AMERICA INC.</p>	DRAWN: J. MATTAS	DATE: 1-27-09	TITLE: V1000 DIMENSION DRAWING FRAME SIZE 14 OPEN ENCLOSURE (IP00 RATING) 2A0030A, 2A0040A, 4A0018A, 4A0023A
			CHECKED: J. PIOTROWSKI	DATE: 8-21-09	
			TECH: J. CAIRO	DATE: 8-24-09	
			APPROVED: T. SASADA	DATE: 8-28-09	
UNITS: IN [mm]	SCALE: BY VIEW	ORIGINAL DESIGN:			SIZE: A REVISION: R00 PAGE: 3 of 3
					DRAWING #: DD.V1K.FR14.IP00