

MODEL # CIMR-VU	VOLTAGE THREE PHASE (VAC)	OUTPUT CURRENT (A)		WEIGHT LBS (Kg)	HEAT LOSS (W)					
					ND (Fc=2kHz)			HD (Fc=8kHz)		
		ND	HD		INT	EXT	TOT	INT	EXT	TOT
2A0056AXX	208/240	56.0	47.0	11.7 (5.3)	151.8	357.9	509.7	117.6	347.6	465.2
4A0038AXX	380/480	38.0	31.0	11.7 (5.3)	155.8	319.2	475.0	126.6	319.1	445.7

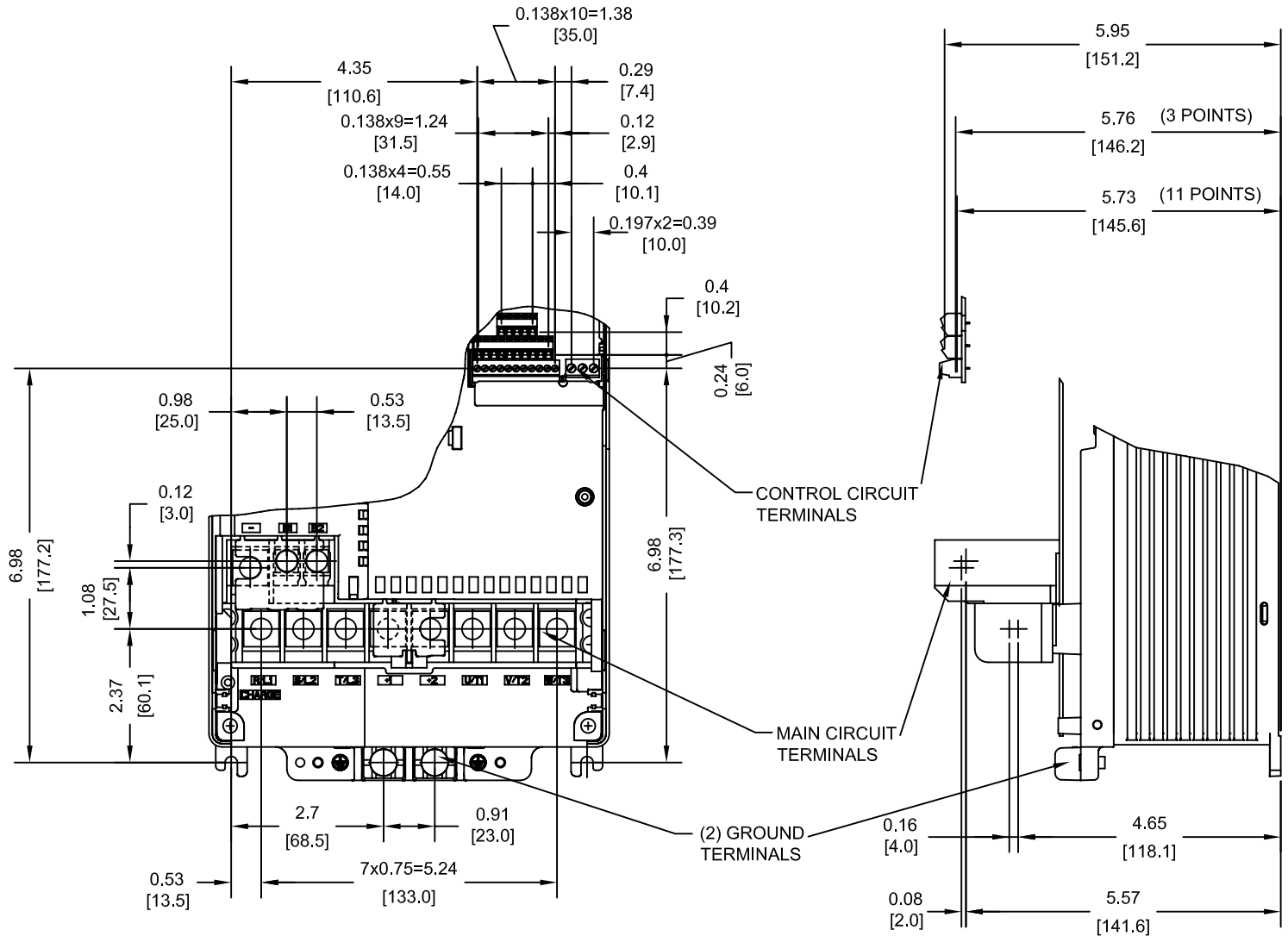
NOTE:
XX DENOTES AA-ZZ

INT=INTERNAL COMPONENTS
EXT=EXTERNAL HEATSINK
TOT=TOTAL

FOR ADDITIONAL DETAILS AND SPECIFICATIONS, CONSULT MANUAL

TOLERANCES / REFERENCES:		<p>YASKAWA The Drive for Quality™</p> <p><i>THIS DOCUMENT AND INFORMATION CONTAINED IN IT ARE CONFIDENTIAL, AND CANNOT BE COPIED OR DISCLOSED IN WHOLE OR IN PART WITHOUT THE EXPRESS WRITTEN CONSENT OF YASKAWA ELECTRIC AMERICA INC.</i></p>	DRAWN: J. MATTAS DATE 1-29-09	TITLE: V1000 DIMENSION DRAWING FRAME SIZE 16 OPEN ENCLOSURE (IP00 RATING) 2A0056A AND 4A0038A		
UNITS: IN [mm]	SCALE: 1:5		CHECKED: J. PIOTROWSKI DATE 8-21-09	SIZE A	REVISION R00	PAGE 1 of 3
			TECH: J. CAIRO DATE 8-24-09	DATE 8-28-09	DRAWING #: DD.V1K.FR16.IP00	
			APPROVED: T. SASADA DATE 8-28-09	ORIGINAL DESIGN: - DATE -		

TERMINAL AND WIRING DETAILS (SCALE 1:3)



TERMINAL AND WIRE SPECIFICATIONS FOR
MAIN CIRCUIT AND GROUND

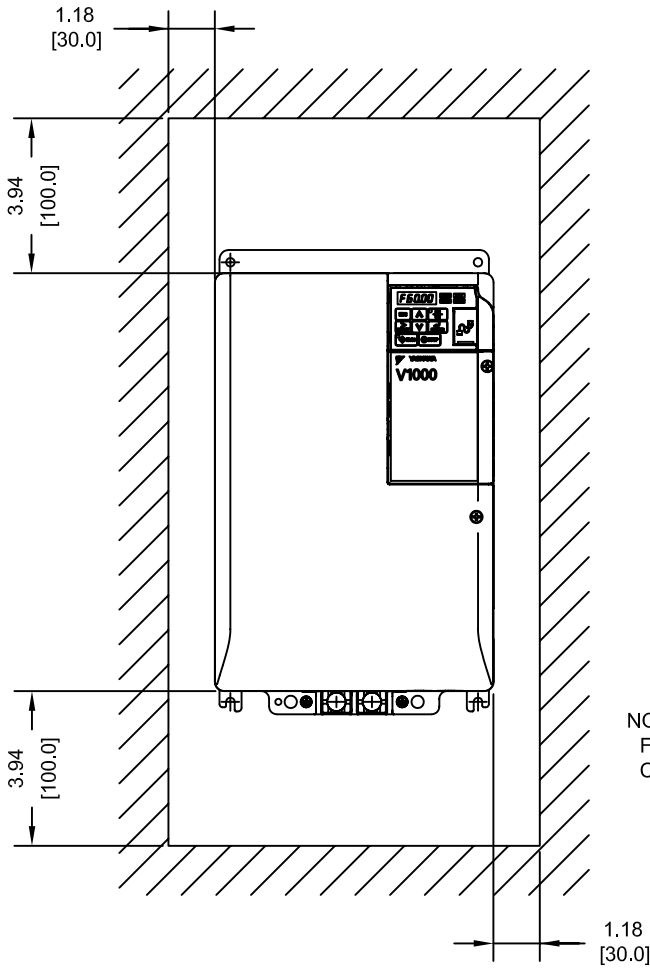
MODEL # CIMR-VU	TERMINAL SYMBOL	TERMINAL SCREW	CLAMPING TORQUE lb.in.(N.m.)	WIRE RANGE AWG(mm ²)
2A0056A	R/L1, S/L2, T/L3, ⊖, ⊕1, ⊕2, U/T1, V/T2, W/T3	M6	35.4 TO 53.1 (4 TO 6)	6-4 (14-22)
	B1, B2	M5	17.7 TO 22.1 (2 TO 2.5)	10-6 (5.5-14)
4A0038A	R/L1, S/L2, T/L3, ⊖, ⊕1, ⊕2, U/T1, V/T2, W/T3, B1, B2	M6	35.4 TO 53.1 (4 TO 6)	6-4 (14-22)
	⊕	M5	17.7 TO 22.1 (2 TO 2.5)	10-6 (5.5-14)
	⊕	M6	35.4 TO 53.1 (4 TO 6)	10-6 (5.5-14)

NOTE: RATINGS APPLY TO BOTH FACTORY AND FIELD WIRING
REFER TO APPLICABLE CODES FOR PROPER WIRE TYPE AND SIZE

FOR ADDITIONAL DETAILS AND SPECIFICATIONS, CONSULT MANUAL

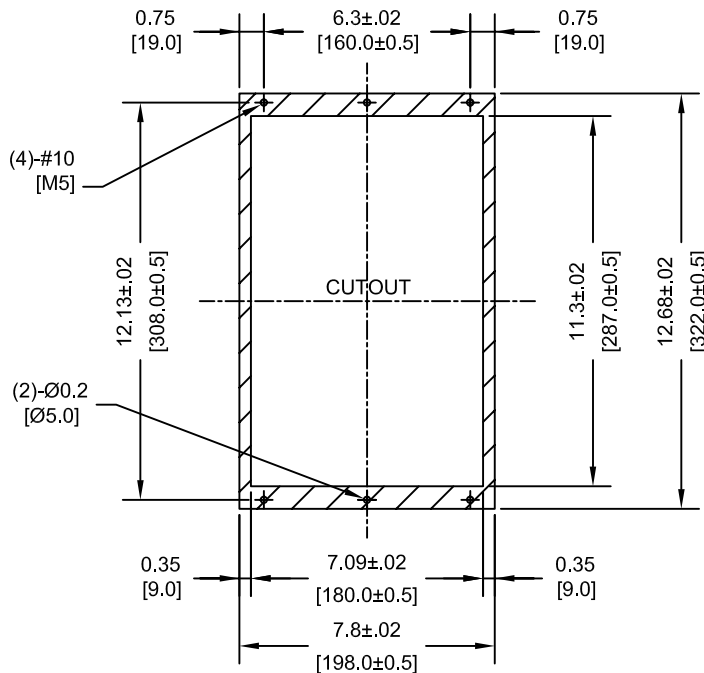
TOLERANCES / REFERENCES:		<p>THIS DOCUMENT AND INFORMATION CONTAINED IN IT ARE CONFIDENTIAL, AND CANNOT BE COPIED OR DISCLOSED IN WHOLE OR IN PART WITHOUT THE EXPRESS WRITTEN CONSENT OF YASKAWA ELECTRIC AMERICA INC.</p>	DRAWN: J. MATTAS DATE 1-29-09	TITLE: V1000 DIMENSION DRAWING FRAME SIZE 16 OPEN ENCLOSURE (IP00 RATING) 2A0056A AND 4A0038A
UNITS: IN [mm]			CHECKED: J. PIOTROWSKI DATE 8-21-09	TECH: J. CAIRO DATE 8-24-09
SCALE: BY VIEW			APPROVED: T. SASADA DATE 8-28-09	ORIGINAL DESIGN: - DATE -
			SIZE A	REVISION R00
		DRAWING #: DD.V1K.FR16.IP00		

MINIMUM INSTALLATION CLEARANCES (SCALE 1:5)



NOTE:
FOR SIDE-BY-SIDE MOUNTING
CONSULT MANUAL

PANEL CUTOUT FOR EXTERNAL HEATSINK
MOUNTING CONFIGURATION (SCALE 1:6)



NOTES:
1. EXTERNAL HEATSINK
CONFIGURATION REQUIRES
MOUNTING KIT
2. EXPOSED HEATSINK
RECOMMENDED CLEARANCE
D=3.15" MINUS PANEL THICKNESS

TOLERANCES / REFERENCES:		<p>YASKAWA The Drive for Quality™</p> <p>THIS DOCUMENT AND INFORMATION CONTAINED IN IT ARE CONFIDENTIAL, AND CANNOT BE COPIED OR DISCLOSED IN WHOLE OR IN PART WITHOUT THE EXPRESS WRITTEN CONSENT OF YASKAWA ELECTRIC AMERICA INC.</p>	DRAWN: J. MATTAS DATE 1-29-09	DATE 1-29-09	TITLE: V1000 DIMENSION DRAWING FRAME SIZE 16 OPEN ENCLOSURE (IP00 RATING) 2A0056A AND 4A0038A		
			CHECKED: J. PIOTROWSKI DATE 8-21-09	DATE 8-21-09			
			TECH: J. CAIRO DATE 8-24-09	DATE 8-24-09			
			APPROVED: T. SASADA DATE 8-28-09	DATE 8-28-09			
UNITS: IN [mm]	SCALE: BY VIEW	ORIGINAL DESIGN: -	DATE -	DATE -	SIZE A	REVISION R00	PAGE 3 of 3
				DRAWING #: DD.V1K.FR16.IP00			