

MODEL # CIMR-VU	VOLTAGE SINGLE PHASE (VAC)	OUTPUT CURRENT (A)		WEIGHT LBS (Kg)	HEAT LOSS (W)					
		ND	HD		ND (Fc=2kHz)			HD (Fc=8kHz)		
					INT	EXT	TOT	INT	EXT	TOT
BA0003JXX	208/240	3.2	3.0	1.8 (0.8)	14.4	14.6	29.0	11.5	16.1	27.6

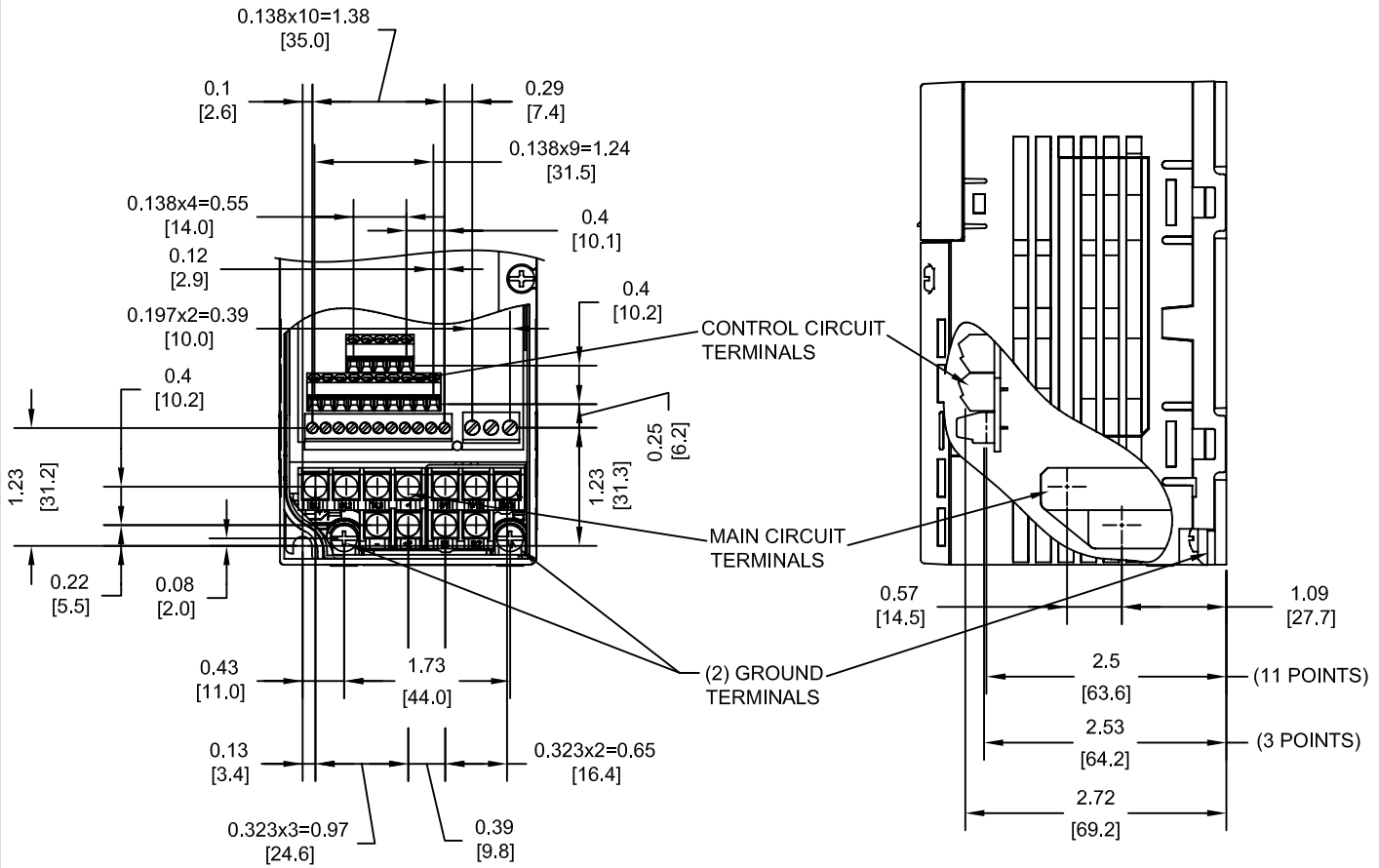
NOTE:  
XX DENOTES AA-ZZ

INT=INTERNAL COMPONENTS  
EXT=EXTERNAL HEATSINK  
TOT=TOTAL

FOR ADDITIONAL DETAILS AND SPECIFICATIONS, CONSULT MANUAL

TOLERANCES / REFERENCES:		<p><b>YASKAWA</b> The Drive for Quality™</p> <p><i>THIS DOCUMENT AND INFORMATION CONTAINED IN IT ARE CONFIDENTIAL, AND CANNOT BE COPIED OR DISCLOSED IN WHOLE OR IN PART WITHOUT THE EXPRESS WRITTEN CONSENT OF YASKAWA ELECTRIC AMERICA INC.</i></p>	DRAWN: J. MATTAS DATE: 1-5-09	DATE: 1-5-09	TITLE: V1000 DIMENSION DRAWING FRAME SIZE 2 FINLESS HEATSINK BA0003J			
UNITS: IN[mm]	SCALE: 1:2		CHECKED: J. PIOTROWSKI DATE: 5-20-09	DATE: 5-20-09		SIZE: A	REVISION: R00	PAGE: 1 of 3
			APPROVED: T. SASADA DATE: 7-8-09	DATE: 7-8-09		DRAWING #: <b>DD.V1K.FR2.FNL.01</b>		

TERMINAL AND WIRING DETAILS (SCALE 1:2)



TERMINAL AND WIRE SPECIFICATIONS FOR  
MAIN CIRCUIT AND GROUND

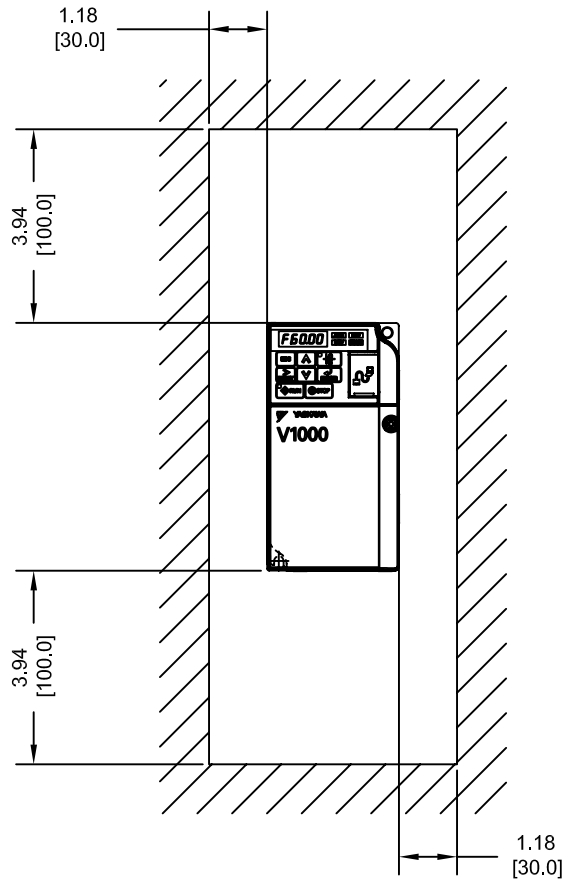
MODEL # CIMR-VU	TERMINAL SCREW	CLAMPING TORQUE lb.in.(N.m.)	WIRE RANGE AWG(mm <sup>2</sup> )
BA0003J	M3.5	7.1 TO 8.9 (0.8 TO 1.0)	22-14 (0.33-2.0)

NOTE: RATINGS APPLY TO BOTH FACTORY AND FIELD WIRING  
REFER TO APPLICABLE CODES FOR PROPER WIRE TYPE AND SIZE

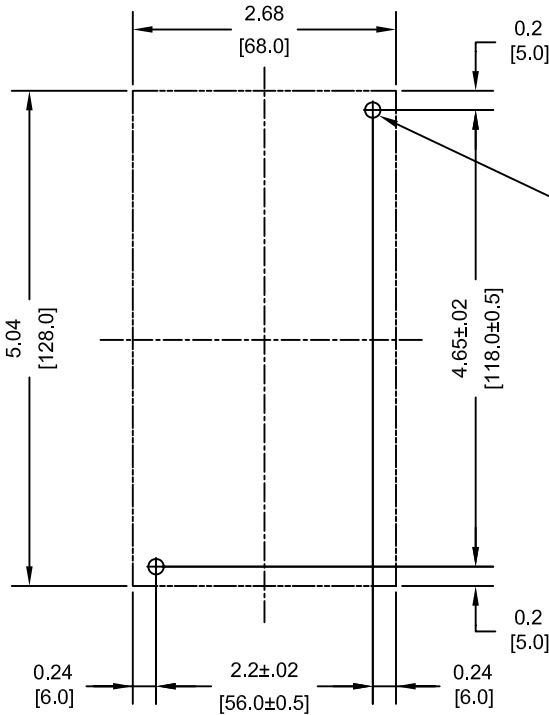
FOR ADDITIONAL DETAILS AND SPECIFICATIONS, CONSULT MANUAL

TOLERANCES / REFERENCES:		<p>THIS DOCUMENT AND INFORMATION CONTAINED IN IT ARE CONFIDENTIAL, AND CANNOT BE COPIED OR DISCLOSED IN WHOLE OR IN PART WITHOUT THE EXPRESS WRITTEN CONSENT OF YASKAWA ELECTRIC AMERICA INC.</p>	DRAWN: J. MATTAS DATE 1-5-09	DATE 1-5-09	TITLE: V1000 DIMENSION DRAWING FRAME SIZE 2 FINLESS HEATSINK BA0003J	
			CHECKED: J. PIOTROWSKI DATE 5-20-09	DATE 5-20-09		
			TECH: J. CAIRO DATE 7-7-09	DATE 7-7-09		
			APPROVED: T. SASADA DATE 7-8-09	DATE 7-8-09		
UNITS: IN[mm]	SCALE: BY VIEW	ORIGINAL DESIGN: -	DATE -	SIZE A	REVISION R00	PAGE 2 of 3
				DRAWING #: <b>DD.V1K.FR2.FNL.01</b>		

MINIMUM INSTALLATION CLEARANCES (SCALE 1:4)



MOUNTING DIMENSIONS (SCALE 1:2)



(2)-MOUNTING HOLES FOR #8[M4] SCREWS

NOTES:

1. MOUNTING PLATE PROPERTIES
  - FLATNESS SHALL NOT EXCEED 0.2mm
  - ROUGHNESS SHALL NOT EXCEED 25S
  - TEMP. SHALL NOT EXCEED 90C (194F)
2. APPLY THERMAL COMPOUND BETWEEN HEATSINK AND MOUNTING PLATE.
3. MOUNTING SCREW TORQUE
  - 1.0-1.3 Nm (0.74-0.96 ft-lbf)
4. SEE MANUAL FOR COMPLETE DETAILS

TOLERANCES / REFERENCES:		<p>THIS DOCUMENT AND INFORMATION CONTAINED IN IT ARE CONFIDENTIAL, AND CANNOT BE COPIED OR DISCLOSED IN WHOLE OR IN PART WITHOUT THE EXPRESS WRITTEN CONSENT OF YASKAWA ELECTRIC AMERICA INC.</p>	DRAWN: J. MATTAS	DATE: 1-5-09	TITLE: V1000 DIMENSION DRAWING FRAME SIZE 2 FINLESS HEATSINK BA0003J
			CHECKED: J. PIOTROWSKI	DATE: 5-20-09	
			TECH: J. CAIRO	DATE: 7-7-09	
			APPROVED: T. SASADA	DATE: 7-8-09	
UNITS: IN[mm]	SCALE: BY VIEW	ORIGINAL DESIGN:	-	DATE:	
					SIZE: A      REVISION: R00      PAGE: 3 of 3
					DRAWING #: DD.V1K.FR2.FNL.01