

MODEL # CIMR-VU	VOLTAGE (VAC)	OUTPUT CURRENT (A)		WEIGHT LBS (Kg)	HEAT LOSS (W)					
					ND (Fc=2kHz)			HD (Fc=8kHz)		
		ND	HD		INT	EXT	TOT	INT	EXT	TOT
BA0006JXX	208/240 SINGLE PHASE	6.0	5.0	2.4 (1.1)	19.4	30.1	49.5	16.8	33.7	50.5
2A0012JXX	208/240 THREE PHASE	12.0	11.0	2.2 (1.0)	30.4	61.3	91.7	29.9	70.7	100.6
4A0004JXX	380/480 THREE PHASE	4.1	3.4	2.2 (1.0)	16.8	30.5	47.3	17.9	42.3	60.2

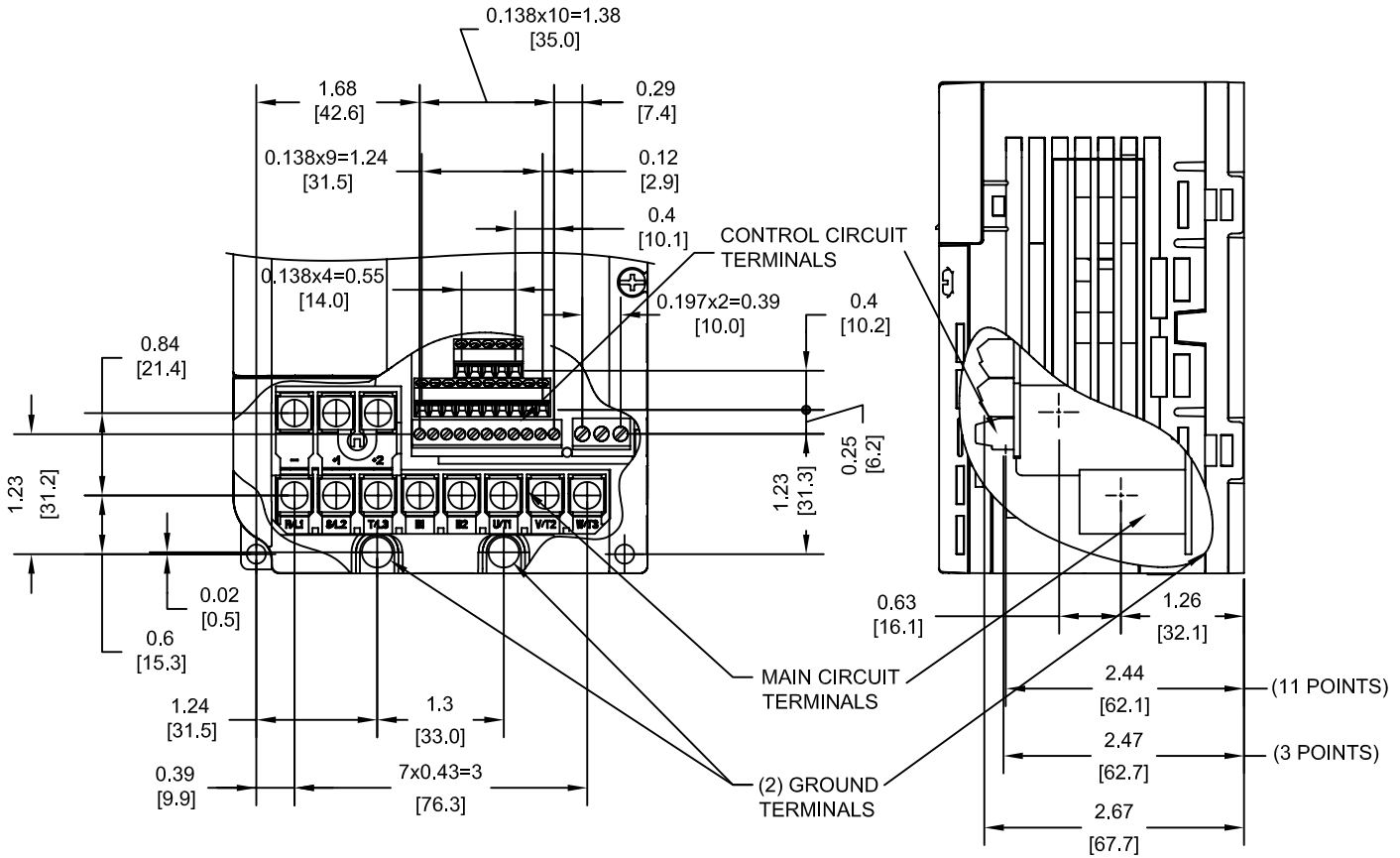
NOTE:  
XX DENOTES AA-ZZ

INT=INTERNAL COMPONENTS  
EXT=EXTERNAL HEATSINK  
TOT=TOTAL

FOR ADDITIONAL DETAILS AND SPECIFICATIONS, CONSULT MANUAL

TOLERANCES / REFERENCES:		<p><b>YASKAWA</b> The Drive for Quality™</p> <p>THIS DOCUMENT AND INFORMATION CONTAINED IN IT ARE CONFIDENTIAL, AND CANNOT BE COPIED OR DISCLOSED IN WHOLE OR IN PART WITHOUT THE EXPRESS WRITTEN CONSENT OF YASKAWA ELECTRIC AMERICA INC.</p>	DRAWN: J. MATTAS DATE 1-6-09	DATE 1-6-09	TITLE: V1000 DIMENSION DRAWING FRAME SIZE 4 FINLESS HEATSINK BA0006J, 2A0012J & 4A0004J	
UNITS: IN[mm]	SCALE: 1:3		CHECKED: J. PIOTROWSKI DATE 5-20-09	DATE 5-20-09		
		TECH: J. CAIRO DATE 7-7-09	DATE 7-7-09	SIZE A	REVISION R00	PAGE 1 of 3
		APPROVED: T. SASADA DATE 7-8-09	DATE 7-8-09	DRAWING #: <b>DD.V1K.FR4.FNL.01</b>		

TERMINAL AND WIRING DETAILS (SCALE 1:2)



TERMINAL AND WIRE SPECIFICATIONS FOR  
MAIN CIRCUIT AND GROUND

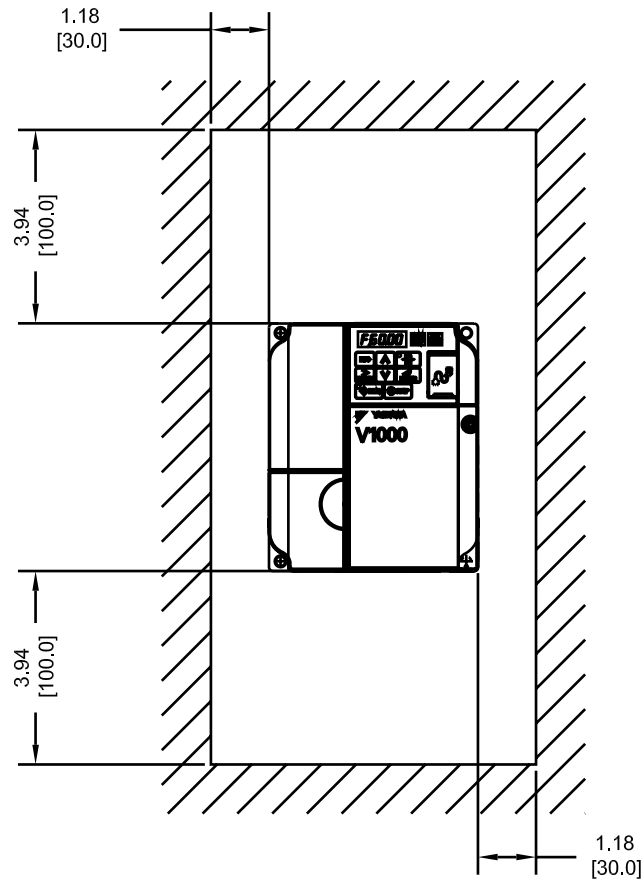
MODEL # CIMR-VU	TERMINAL SCREW	CLAMPING TORQUE lb.in.(N.m.)	WIRE RANGE AWG(mm <sup>2</sup> )
BA0006J	M4	10.6 TO 13.3 (1.2 TO 1.5)	22-10 (0.33-5.5)
2A0012J	M4	10.6 TO 13.3 (1.2 TO 1.5)	22-10 (0.33-5.5)
4A0004J	M4	10.6 TO 13.3 (1.2 TO 1.5)	22-10 (0.33-5.5)

NOTE: RATINGS APPLY TO BOTH FACTORY AND FIELD WIRING  
REFER TO APPLICABLE CODES FOR PROPER WIRE TYPE AND SIZE

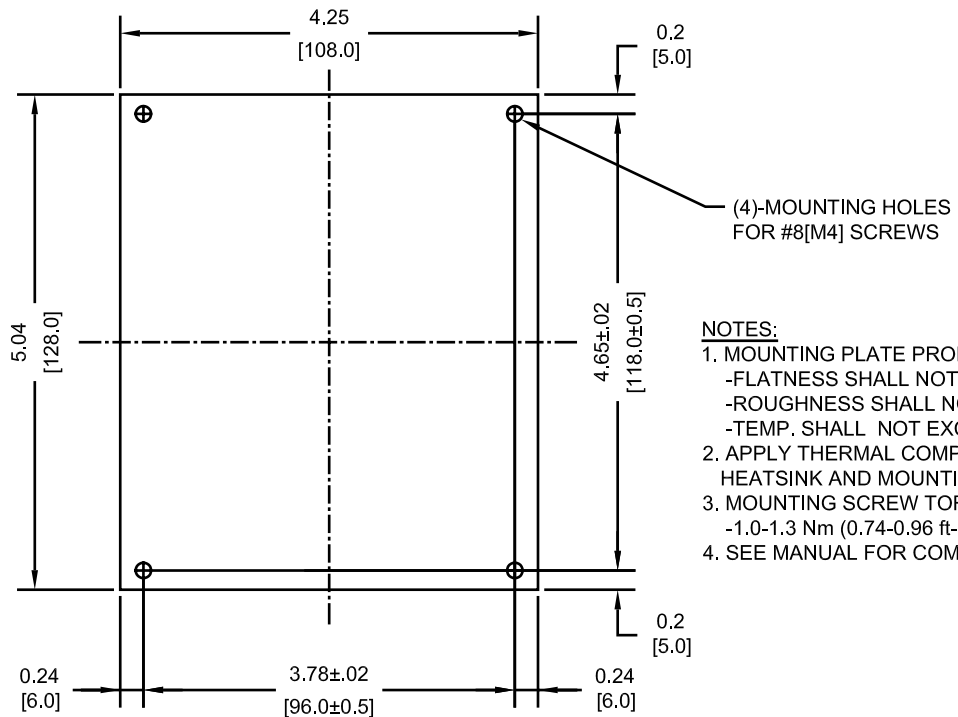
FOR ADDITIONAL DETAILS AND SPECIFICATIONS, CONSULT MANUAL

TOLERANCES / REFERENCES:		<p>THIS DOCUMENT AND INFORMATION CONTAINED IN IT ARE CONFIDENTIAL, AND CANNOT BE COPIED OR DISCLOSED IN WHOLE OR IN PART WITHOUT THE EXPRESS WRITTEN CONSENT OF YASKAWA ELECTRIC AMERICA INC.</p>	DRAWN: J. MATTAS DATE 1-6-09	DATE 1-6-09	TITLE: V1000 DIMENSION DRAWING FRAME SIZE 4 FINLESS HEATSINK BA0006J, 2A0012J & 4A0004J
UNITS: IN[mm]			CHECKED: J. PIOTROWSKI DATE 5-20-09	DATE 5-20-09	
SCALE: BY VIEW			TECH: J. CAIRO DATE 7-7-09	DATE 7-7-09	
			APPROVED: T. SASADA DATE 7-8-09	DATE 7-8-09	
		ORIGINAL DESIGN:	DATE:	SIZE A	REVISION R00
				PAGE 2 of 3	DRAWING #: DD.V1K.FR4.FNL.01

MINIMUM INSTALLATION CLEARANCES (SCALE 1:4)



MOUNTING DIMENSIONS (SCALE 1:2)



NOTES:

1. MOUNTING PLATE PROPERTIES
  - FLATNESS SHALL NOT EXCEED 0.2mm
  - ROUGHNESS SHALL NOT EXCEED 25S
  - TEMP. SHALL NOT EXCEED 90C (194F)
2. APPLY THERMAL COMPOUND BETWEEN HEATSINK AND MOUNTING PLATE.
3. MOUNTING SCREW TORQUE
  - 1.0-1.3 Nm (0.74-0.96 ft-lbf)
4. SEE MANUAL FOR COMPLETE DETAILS

J. PIOTROWSKI 5-20-09 FRAME SIZE 4  
 7-7-09  
 7-8-09

THIS DOCUMENT AND INFORMATION CONTAINED  
 IN IT ARE CONFIDENTIAL, AND CANNOT BE  
 COPIED OR DISCLOSED IN WHOLE OR IN PART  
 WITHOUT THE EXPRESS WRITTEN CONSENT  
 VA ELECTRIC AMERICA INC.

R00

DD.V1K.FR4.FNL.01