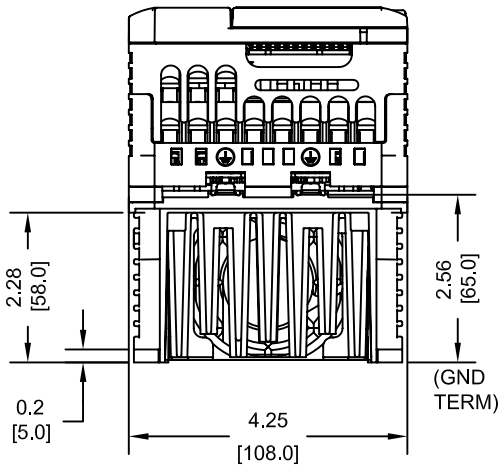
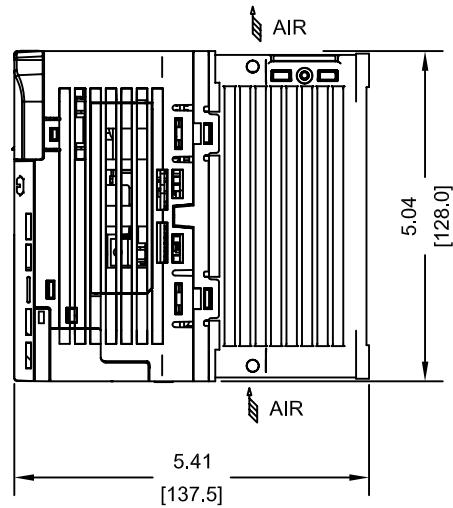
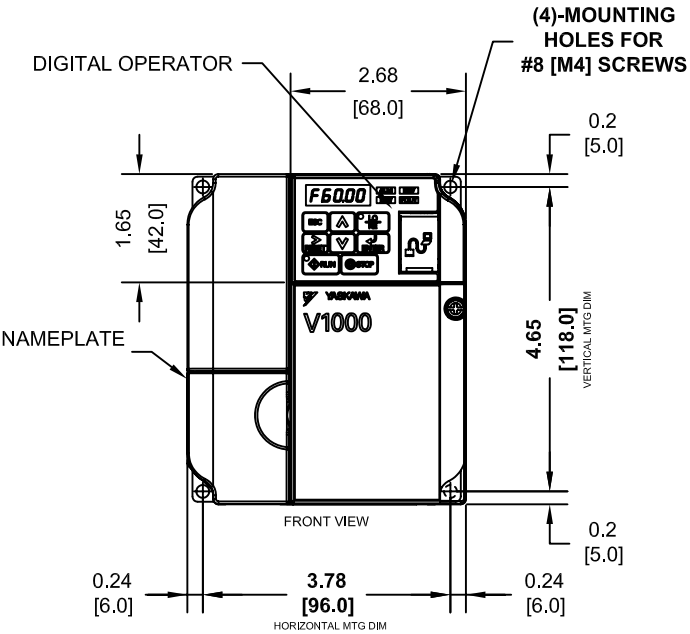
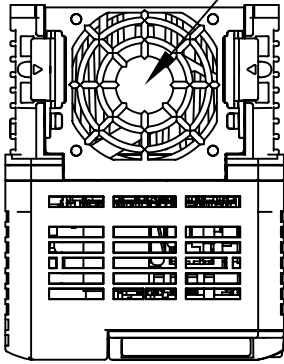


2A0012B: COOLING FAN
 BA0006B: NATURAL CONVECTION
 4A0004B: NATURAL CONVECTION



MODEL # CIMR-VU	VOLTAGE (VAC)	OUTPUT CURRENT (A)		WEIGHT LBS (Kg)	HEAT LOSS (W)					
		ND	HD		ND (Fc=2kHz)			HD (Fc=8kHz)		
					INT	EXT	TOT	INT	EXT	TOT
BA0006BXX	208/240 SINGLE PHASE	6.0	5.0	3.7 (1.7)	19.4	30.1	49.5	16.8	33.7	50.5
2A0012BXX	208/240 THREE PHASE	12.0	11.0	3.7 (1.7)	30.4	61.3	91.7	29.9	70.7	100.6
4A0004BXX	380/480 THREE PHASE	4.1	3.4	3.7 (1.7)	16.8	30.5	47.3	17.9	42.3	60.2

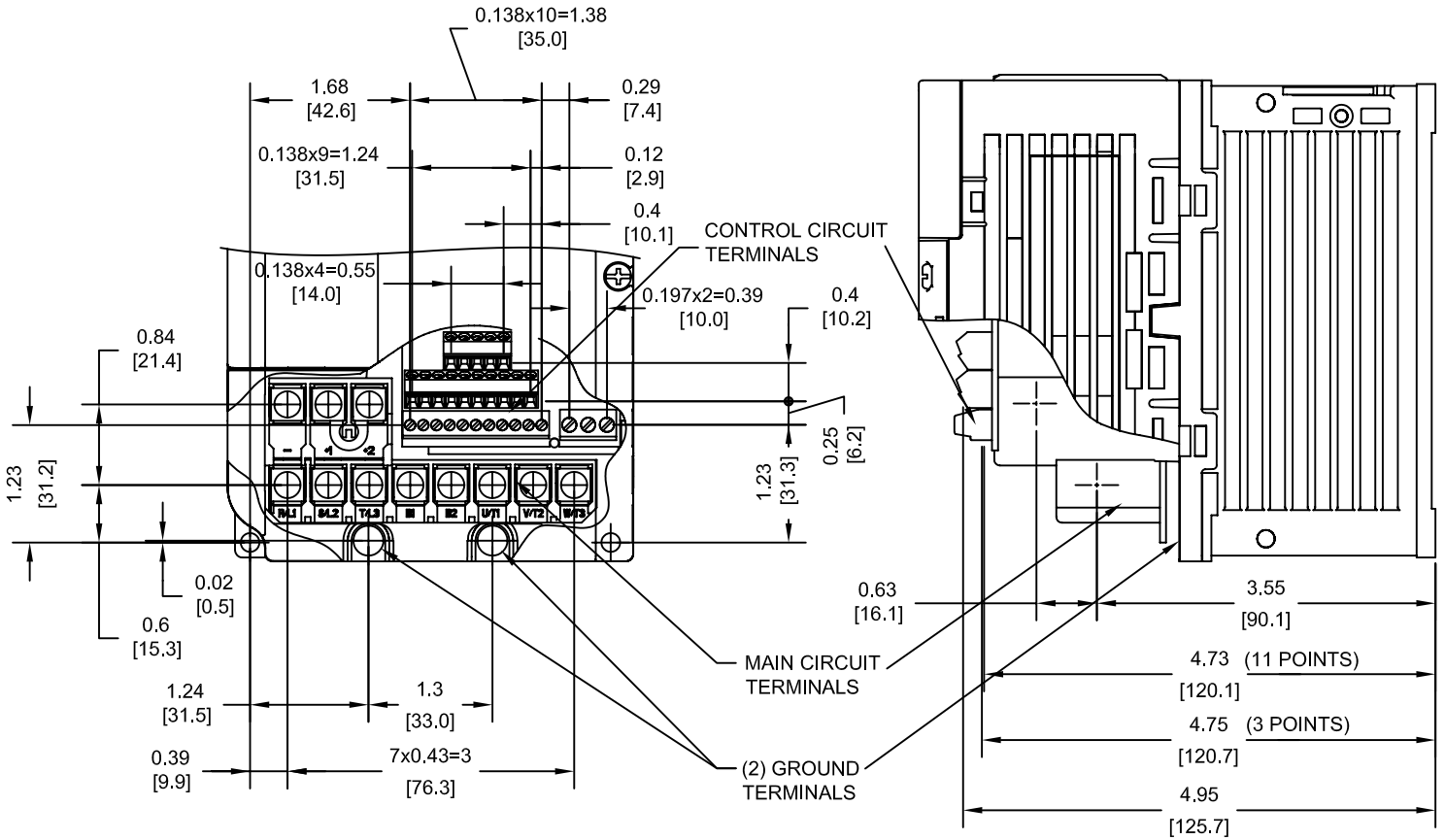
NOTE:
 XX DENOTES AA-ZZ

INT=INTERNAL COMPONENTS
 EXT=EXTERNAL HEATSINK
 TOT=TOTAL

FOR ADDITIONAL DETAILS AND SPECIFICATIONS, CONSULT MANUAL

TOLERANCES / REFERENCES:		<p>YASKAWA The Drive for Quality™</p> <p>THIS DOCUMENT AND INFORMATION CONTAINED IN IT ARE CONFIDENTIAL, AND CANNOT BE COPIED OR DISCLOSED IN WHOLE OR IN PART WITHOUT THE EXPRESS WRITTEN CONSENT OF YASKAWA ELECTRIC AMERICA INC.</p>	DRAWN: J. MATTAS CHECKED: J. PIOTROWSKI TECH: J. CAIRO APPROVED: T. SASADA ORIGINAL DESIGN: -	DATE 1-22-09 DATE 8-21-09 DATE 8-24-09 DATE 8-28-09 DATE -	TITLE: V1000 DIMENSION DRAWING FRAME SIZE 8 OPEN ENCLOSURE (IP20 RATING) BA0006B, 2A0012B & 4A0004B
UNITS: IN [mm]	SCALE: 1:3		SIZE A REVISION R00 PAGE 1 of 3	DRAWING #: DD.V1K.FR8.IP20	

TERMINAL AND WIRING DETAILS (SCALE 1:2)



TERMINAL AND WIRE SPECIFICATIONS FOR
 MAIN CIRCUIT AND GROUND

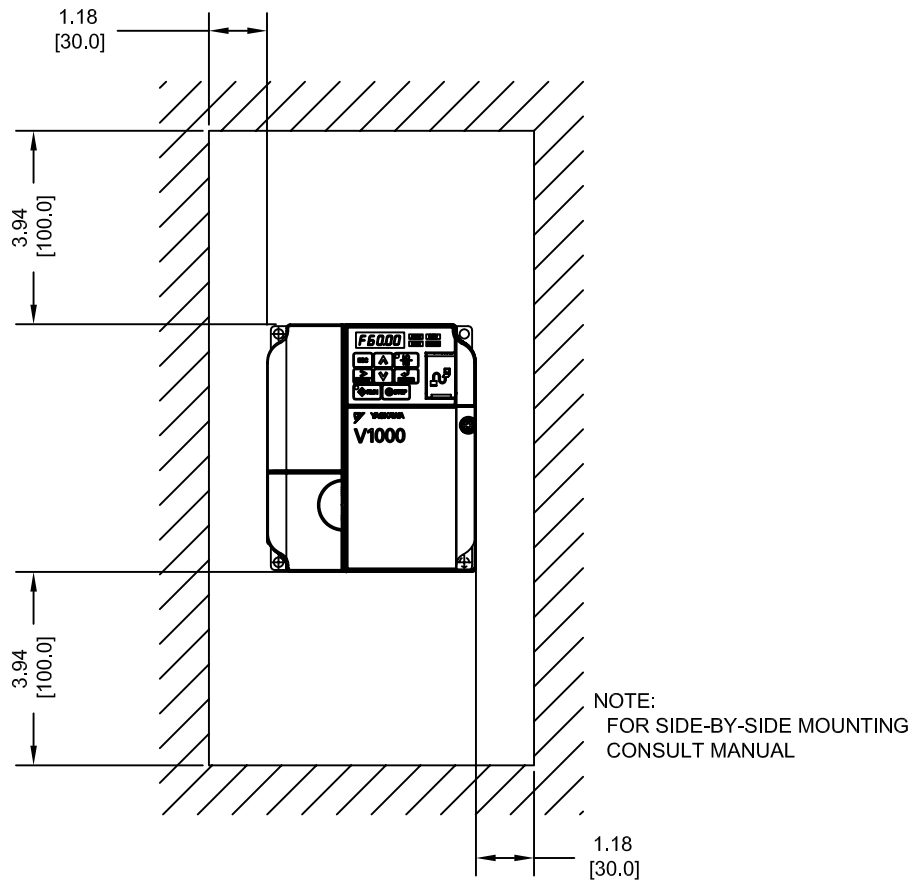
MODEL # CIMR-VU	TERMINAL SCREW	CLAMPING TORQUE lb.in.(N.m.)	WIRE RANGE AWG(mm ²)
BA0006B	M4	10.6 TO 13.3 (1.2 TO 1.5)	22-10 (0.33-5.5)
2A0012B	M4	10.6 TO 13.3 (1.2 TO 1.5)	22-10 (0.33-5.5)
4A0004B	M4	10.6 TO 13.3 (1.2 TO 1.5)	22-10 (0.33-5.5)

NOTE: RATINGS APPLY TO BOTH FACTORY AND FIELD WIRING
 REFER TO APPLICABLE CODES FOR PROPER WIRE TYPE AND SIZE

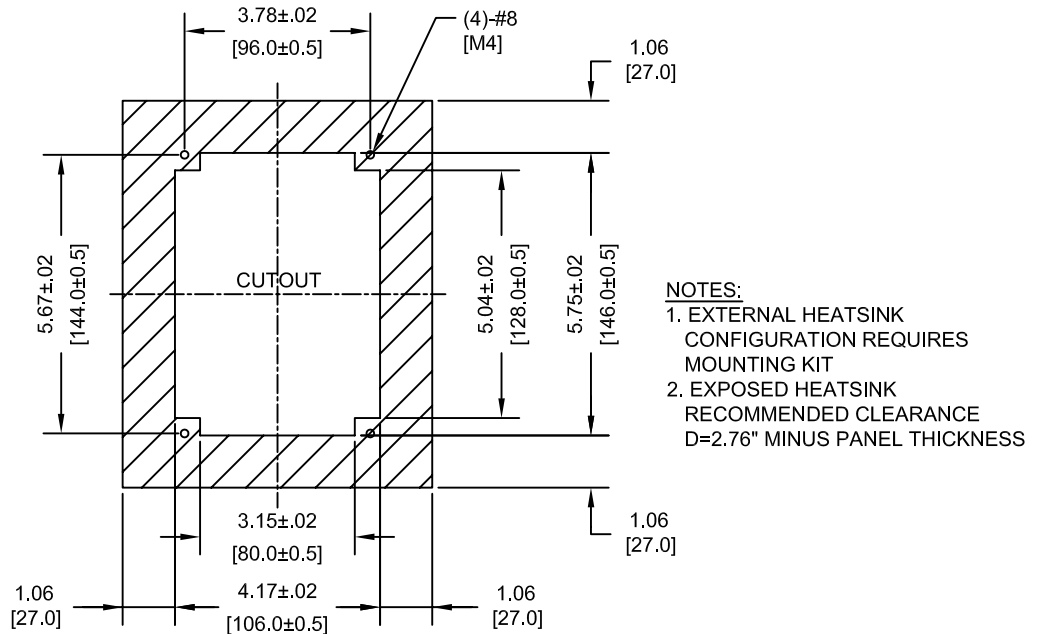
FOR ADDITIONAL DETAILS AND SPECIFICATIONS, CONSULT MANUAL

TOLERANCES / REFERENCES:		DRAWN:	J. MATTAS	DATE:	1-22-09	TITLE: V1000 DIMENSION DRAWING FRAME SIZE 8 OPEN ENCLOSURE (IP20 RATING) BA0006B, 2A0012B & 4A0004B
		CHECKED:	J. PIOTROWSKI	DATE:	8-21-09	
		TECH:	J. CAIRO	DATE:	8-24-09	
		APPROVED:	T. SASADA	DATE:	8-28-09	
UNITS: IN [mm]	SCALE: BY VIEW	ORIGINAL DESIGN:	-	DATE:	-	SIZE: A REVISION: R00 PAGE: 2 of 3
				DRAWING #:		DD.V1K.FR8.IP20

MINIMUM INSTALLATION CLEARANCES (SCALE 1:4)



PANEL CUTOUT FOR EXTERNAL HEATSINK MOUNTING CONFIGURATION (SCALE 1:4)



TOLERANCES / REFERENCES:		<p>THIS DOCUMENT AND INFORMATION CONTAINED IN IT ARE CONFIDENTIAL, AND CANNOT BE COPIED OR DISCLOSED IN WHOLE OR IN PART WITHOUT THE EXPRESS WRITTEN CONSENT OF YASKAWA ELECTRIC AMERICA INC.</p>	DRAWN: J. MATTAS DATE 1-22-09	DATE 1-22-09	TITLE: V1000 DIMENSION DRAWING FRAME SIZE 8 OPEN ENCLOSURE (IP20 RATING) BA0006B, 2A0012B & 4A0004B		
			CHECKED: J. PIOTROWSKI DATE 8-21-09	DATE 8-21-09			
			TECH: J. CAIRO DATE 8-24-09	DATE 8-24-09			
			APPROVED: T. SASADA DATE 8-28-09	DATE 8-28-09			
UNITS: IN [mm]	SCALE: BY VIEW	ORIGINAL DESIGN:			SIZE A	REVISION R00	PAGE 3 of 3
			DRAWING #:		DD.V1K.FR8.IP20		