

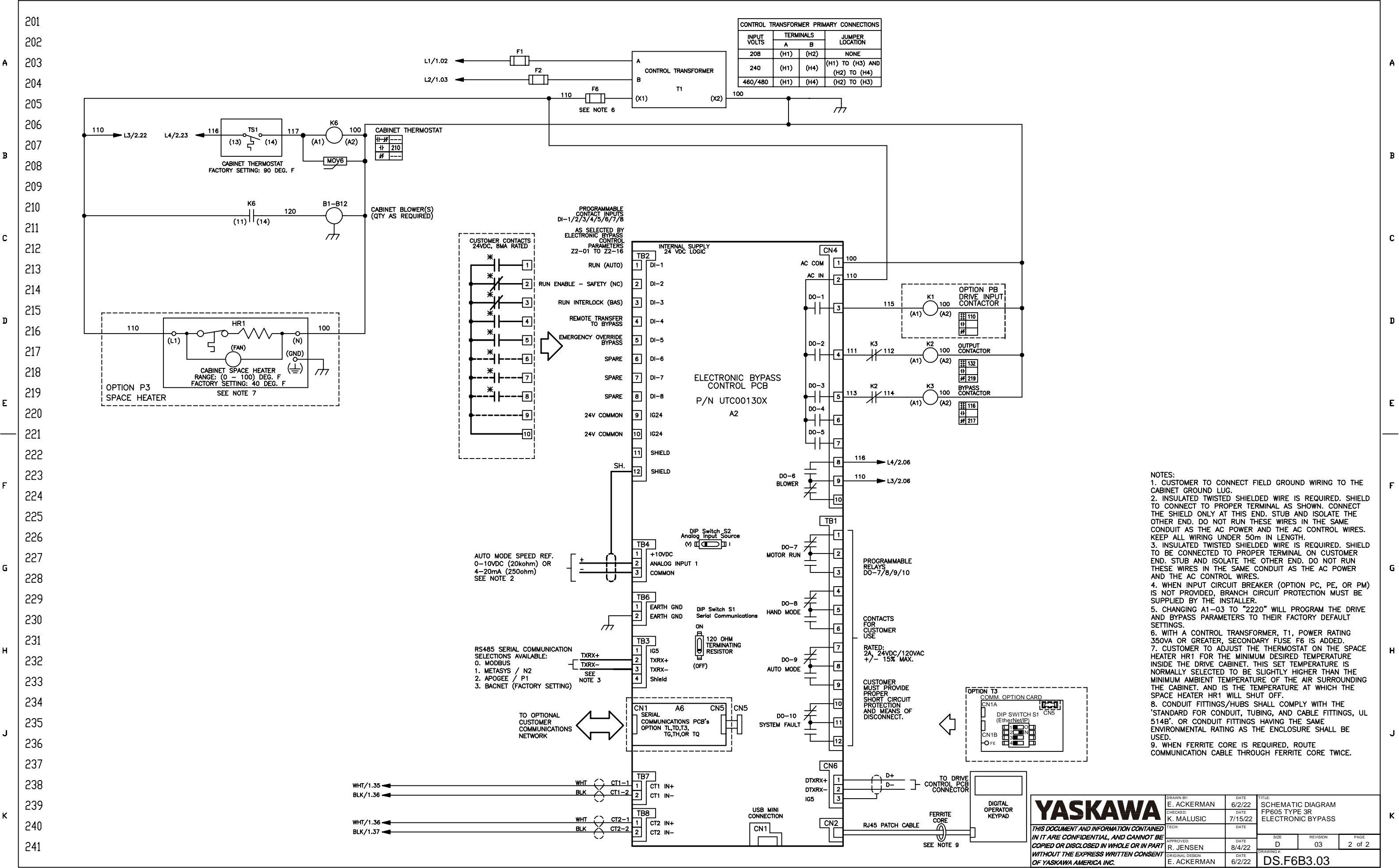
* - INDICATES COMPONENTS NOT SUPPLIED BY YASKAWA.
- - INDICATES CUSTOMER WIRING.
- - CONNECTED TO THE CABINET OR PANEL.
SEE DRAWING UDE00744 FOR CUSTOMER CONNECTION TABLES.
SEE DRAWING UDE00748 FOR DRIVE PARAMETER SETTINGS.

REVISIONS				
REV.	DESCRIPTION	ECO #	DRAWN BY	DATE
03	REVISED NOTES 1 AND 2, TS1 TERM.S. & PG MODEL #S.	13075	RJJ	5/16/2023
02	REPLACED RC PADS WITH MOV'S	12528	KJL	2/21/23
01	ADD B1P1, UDE00748 REF. A3 JMPR. & FERRITE CORE.	12666	RJJ	11/7/2022

YASKAWA

DRAWN BY: E. ACKERMAN	DATE: 6/2/22	TITLE: SCHEMATIC DIAGRAM FP605 TYPE 3R ELECTRONIC BYPASS
CHECKED BY: K. MALUSIC	DATE: 7/15/22	
APPROVED BY: R. JENSEN	DATE: 8/4/22	SIZE: D
ORIGINAL DESIGN: E. ACKERMAN	DATE: 6/2/22	REVISION: 03
		PAGE: 1 of 2

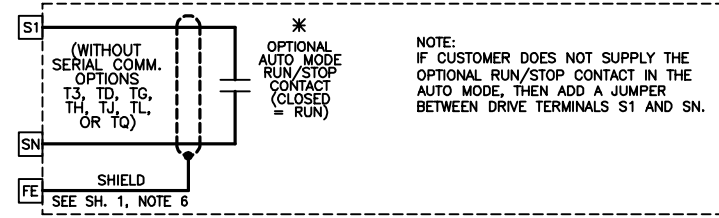
DRAWING #: **DS.F6B3.03**



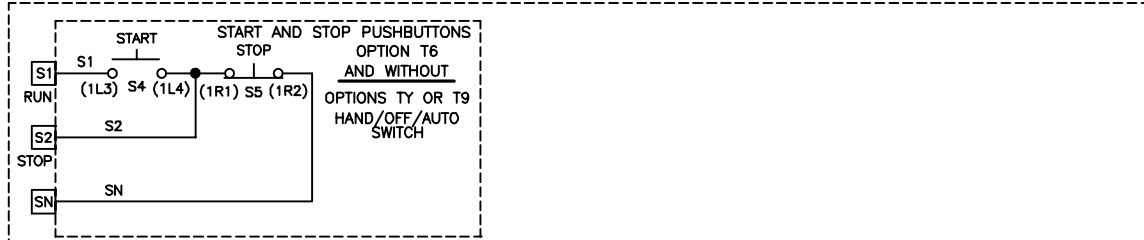
- NOTES:
1. CUSTOMER TO CONNECT FIELD GROUND WIRING TO THE CABINET GROUND LUG.
 2. INSULATED TWISTED SHIELDED WIRE IS REQUIRED. SHIELD TO CONNECT TO PROPER TERMINAL AS SHOWN. CONNECT THE SHIELD ONLY AT THIS END. STUB AND ISOLATE THE OTHER END. DO NOT RUN THESE WIRES IN THE SAME CONDUIT AS THE AC POWER AND THE AC CONTROL WIRES. KEEP ALL WIRING UNDER 50m IN LENGTH.
 3. INSULATED TWISTED SHIELDED WIRE IS REQUIRED. SHIELD TO BE CONNECTED TO PROPER TERMINAL ON CUSTOMER END. STUB AND ISOLATE THE OTHER END. DO NOT RUN THESE WIRES IN THE SAME CONDUIT AS THE AC POWER AND THE AC CONTROL WIRES.
 4. WHEN INPUT CIRCUIT BREAKER (OPTION PC, PE, OR PM) IS NOT PROVIDED, BRANCH CIRCUIT PROTECTION MUST BE SUPPLIED BY THE INSTALLER.
 5. CHANGING A1-03 TO "2220" WILL PROGRAM THE DRIVE AND BYPASS PARAMETERS TO THEIR FACTORY DEFAULT SETTINGS.
 6. WITH A CONTROL TRANSFORMER, T1, POWER RATING 350VA OR GREATER, SECONDARY FUSE F6 IS ADDED.
 7. CUSTOMER TO ADJUST THE THERMOSTAT ON THE SPACE HEATER HR1 FOR THE MINIMUM DESIRED TEMPERATURE INSIDE THE DRIVE CABINET. THIS SET TEMPERATURE IS NORMALLY SELECTED TO BE SLIGHTLY HIGHER THAN THE MINIMUM AMBIENT TEMPERATURE OF THE AIR SURROUNDING THE CABINET. AND IS THE TEMPERATURE AT WHICH THE SPACE HEATER HR1 WILL SHUT OFF.
 8. CONDUIT FITTINGS/HUBS SHALL COMPLY WITH THE 'STANDARD FOR CONDUIT, TUBING, AND CABLE FITTINGS, UL 514B' OR CONDUIT FITTINGS HAVING THE SAME ENVIRONMENTAL RATING AS THE ENCLOSURE SHALL BE USED.
 9. WHEN FERRITE CORE IS REQUIRED, ROUTE COMMUNICATION CABLE THROUGH FERRITE CORE TWICE.

YASKAWA		DRAWN BY: E. ACKERMAN	DATE: 6/2/22	TITLE: SCHEMATIC DIAGRAM FP605 TYPE 3R ELECTRONIC BYPASS
THIS DOCUMENT AND INFORMATION CONTAINED IN IT ARE CONFIDENTIAL, AND CANNOT BE COPIED OR DISCLOSED IN WHOLE OR IN PART WITHOUT THE EXPRESS WRITTEN CONSENT OF YASKAWA AMERICA INC.		CHECKED BY: K. MALUSIC	DATE: 7/15/22	SIZE: D
		APPROVED BY: R. JENSEN	DATE: 8/4/22	REVISION: 03
		ORIGINAL DESIGN: E. ACKERMAN	DATE: 6/2/22	PAGE: 2 of 2
		DRAWING #: DS.F6B3.03		

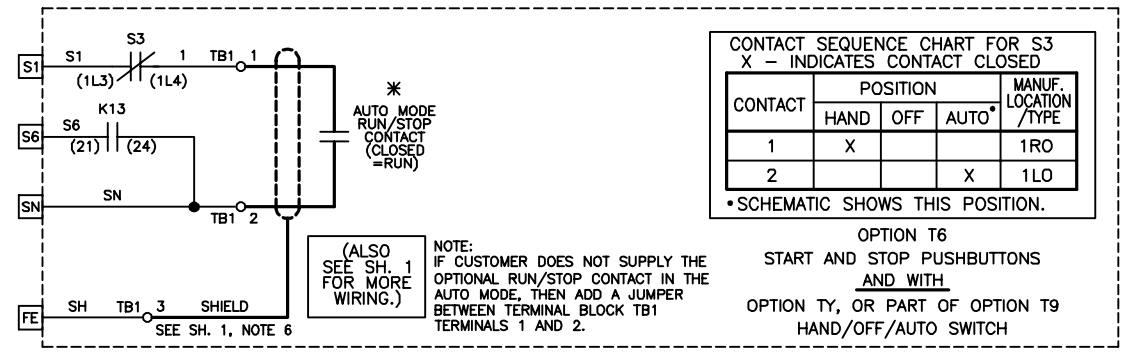
RUN/STOP CONTROL (FROM SHEET 1)



OR



OR

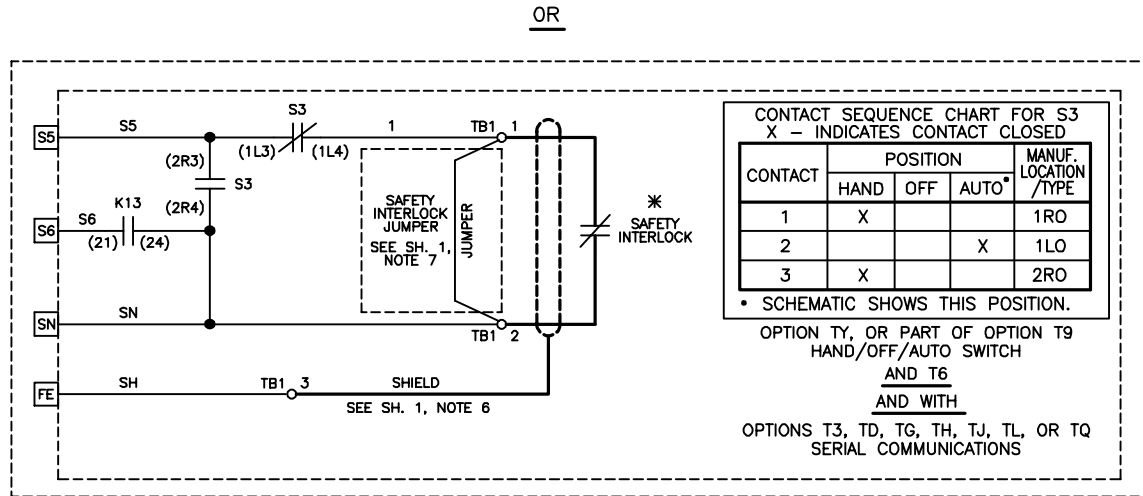


CONTACT SEQUENCE CHART FOR S3
X - INDICATES CONTACT CLOSED

CONTACT	POSITION			MANUF. LOCATION /TYPE
	HAND	OFF	AUTO*	
1	X			1RO
2			X	1LO

* SCHEMATIC SHOWS THIS POSITION.

OPTION T6
START AND STOP PUSHBUTTONS
AND WITH
OPTION TY, OR PART OF OPTION T9
HAND/OFF/AUTO SWITCH

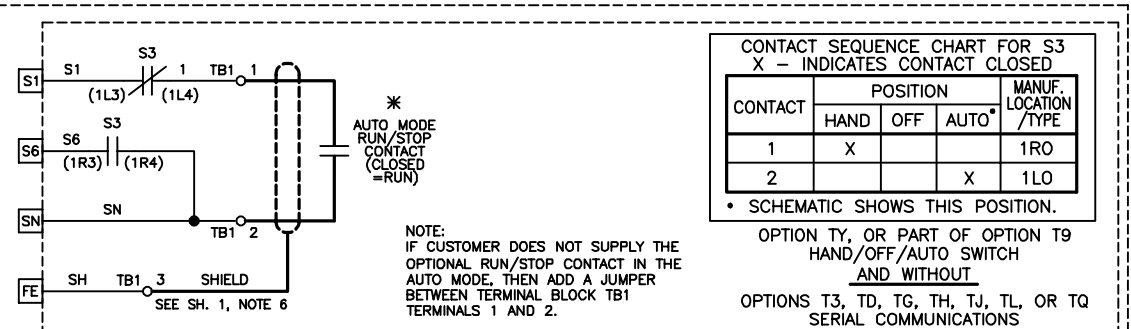


CONTACT SEQUENCE CHART FOR S3
X - INDICATES CONTACT CLOSED

CONTACT	POSITION			MANUF. LOCATION /TYPE
	HAND	OFF	AUTO*	
1	X			1RO
2			X	1LO
3	X			2RO

* SCHEMATIC SHOWS THIS POSITION.

OPTION TY, OR PART OF OPTION T9
HAND/OFF/AUTO SWITCH
AND T6
AND WITH
OPTIONS T3, TD, TG, TH, TJ, TL, OR TQ
SERIAL COMMUNICATIONS

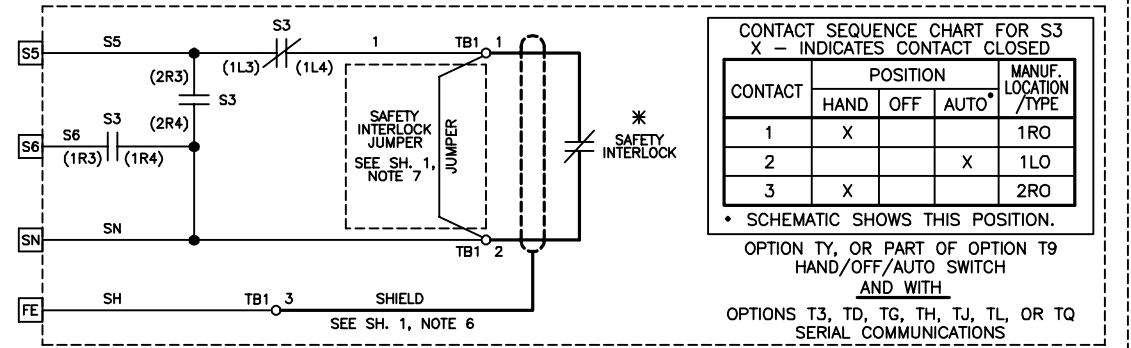


CONTACT SEQUENCE CHART FOR S3
X - INDICATES CONTACT CLOSED

CONTACT	POSITION			MANUF. LOCATION /TYPE
	HAND	OFF	AUTO*	
1	X			1RO
2			X	1LO

* SCHEMATIC SHOWS THIS POSITION.

OPTION TY, OR PART OF OPTION T9
HAND/OFF/AUTO SWITCH
AND WITHOUT
OPTIONS T3, TD, TG, TH, TJ, TL, OR TQ
SERIAL COMMUNICATIONS



CONTACT SEQUENCE CHART FOR S3
X - INDICATES CONTACT CLOSED

CONTACT	POSITION			MANUF. LOCATION /TYPE
	HAND	OFF	AUTO*	
1	X			1RO
2			X	1LO
3	X			2RO

* SCHEMATIC SHOWS THIS POSITION.

OPTION TY, OR PART OF OPTION T9
HAND/OFF/AUTO SWITCH
AND WITH
OPTIONS T3, TD, TG, TH, TJ, TL, OR TQ
SERIAL COMMUNICATIONS

YASKAWA	DRAWN BY:	E. ACKERMAN	DATE:	6/13/22	TITLE:	SCHEMATIC DRAWING		
	CHECKED:	K. MALUSIC	DATE:	7/21/22		FP605 TYPE 3R CONFIGURED		
THIS DOCUMENT AND INFORMATION CONTAINED HEREIN ARE CONFIDENTIAL, AND CANNOT BE COPIED OR DISCLOSED IN WHOLE OR IN PART WITHOUT THE EXPRESS WRITTEN CONSENT OF YASKAWA AMERICA INC.	APPROVED:	R. JENSEN	DATE:	8/3/22	SIZE:	D	REVISION:	00
	ORIGINAL DESIGN:	E. ACKERMAN	DATE:	6/13/22	PAGE:	3 of 3		
					DRAWING #:	DS.F6C3.03		