

SEE SH. 3 FOR RUN/STOP CONTROL WIRING

DRY CONTACTS FOR CUSTOMER USE  
 RATED: 2A MAX., 250VAC  
 2A MAX., 30VDC  
 CUSTOMER MUST PROVIDE PROPER SHORT CIRCUIT PROTECTION AND MEANS OF DISCONNECT.

- NOTES:
- CUSTOMER TO CONNECT FIELD GROUNDING WIRE TO THE CABINET GROUND LUG.
  - WITHOUT THE CIRCUIT BREAKER (OPTION PC PE, OR PM), OR DISCONNECT SWITCH OPTION PD, THE DISCONNECT MEANS MUST BE SUPPLIED BY THE CUSTOMER. BRANCH CIRCUIT PROTECTION TO BE SUPPLIED BY THE CUSTOMER WHEN NOTED ON THE CABINET DATA NAMEPLATE.
  - WITH A CONTROL POWER TRANSFORMER T1, POWER RATING 350VA OR GREATER, SECONDARY FUSE F6 IS ADDED.
  - DRIVE INPUT FUSES F3, F4, F5 ARE INCLUDED WITH OPTION PE, PC OR PM FOR BASE NUMBERS B180-B720.
  - CONDUIT FITTINGS/HUBS SHALL COMPLY WITH THE 'STANDARD FOR CONDUIT, TUBING, AND CABLE FITTINGS, UL 514B'. OR CONDUIT FITTINGS HAVING THE SAME ENVIRONMENTAL RATING AS THE ENCLOSURE SHALL BE USED.
  - INSULATED TWISTED SHIELDED WIRE IS REQUIRED. SHIELD TO CONNECT TO PROPER TERMINALS AS SHOWN. CONNECT THE SHIELD ONLY AT THIS END. STUB AND ISOLATE THE OTHER END. DO NOT RUN THESE WIRES IN THE SAME CONDUIT AS THE AC POWER AND AC CONTROL WIRES. KEEP ALL WIRING UNDER 50m IN LENGTH.
  - CUSTOMER TO REPLACE THE JUMPER WITH NORMALLY CLOSED SAFETY INTERLOCKS, IF APPLICABLE.

\* - INDICATES COMPONENTS NOT SUPPLIED BY YASKAWA.  
 - - INDICATES CUSTOMER WIRING.  
 ⚡ - CONNECTED TO THE CABINET OR PANEL.  
 SEE DRAWING UDE00762 FOR CUSTOMER CONNECTION TABLES.  
 SEE DRAWING UDE00749 FOR DRIVE PARAMETER SETTINGS.

REVISIONS				
REV.	DESCRIPTION	ECO #	DRAWN BY	DATE
00	INITIAL RELEASE	--	KAP	11/14/22

**YASKAWA**

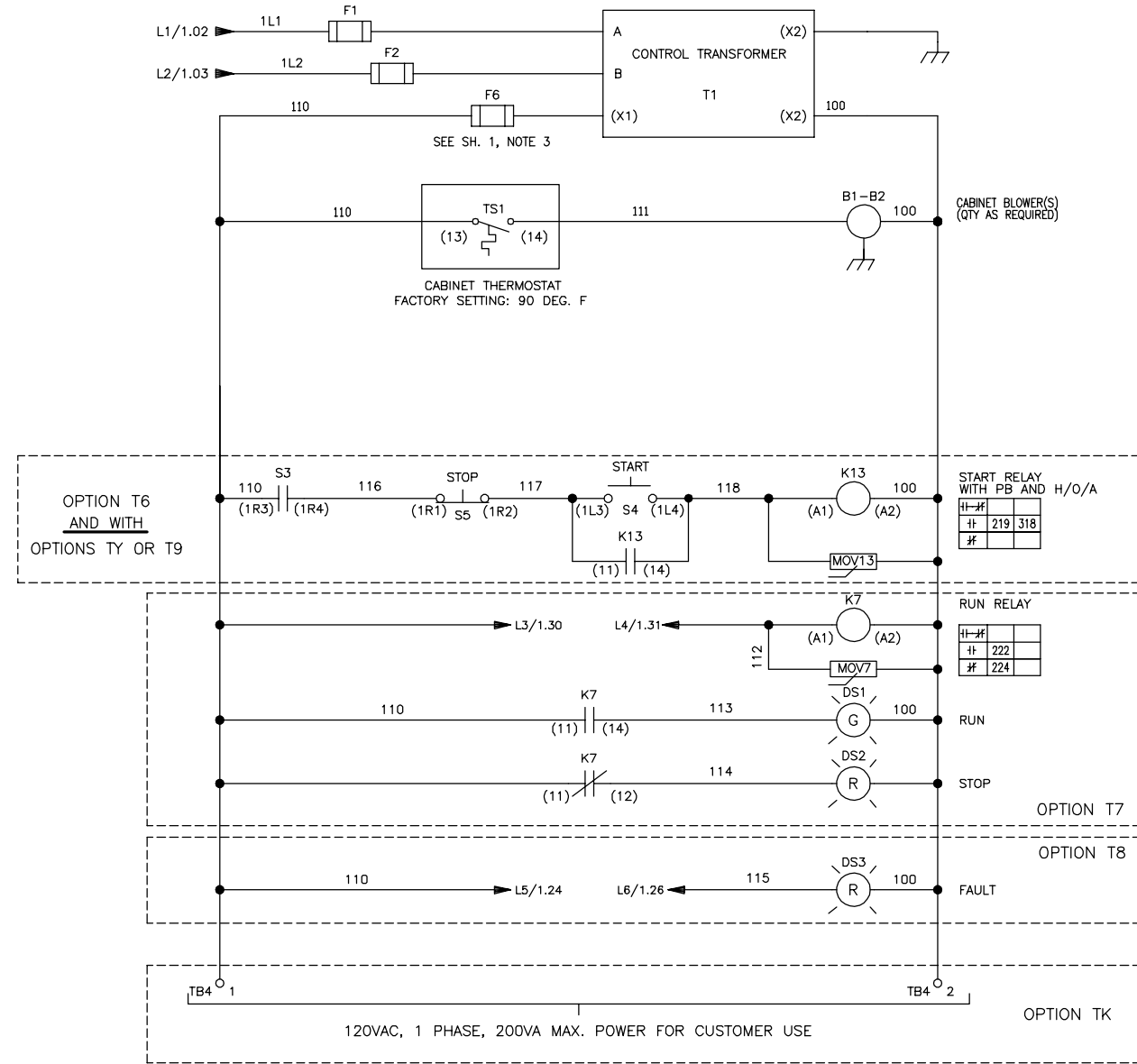
THIS DOCUMENT AND INFORMATION CONTAINED IN IT ARE CONFIDENTIAL, AND CANNOT BE COPIED OR DISCLOSED IN WHOLE OR IN PART WITHOUT THE EXPRESS WRITTEN CONSENT OF YASKAWA AMERICA INC.

DRAWN BY: K. PEOPLES	DATE: 11/14/22	TITLE: SCHEMATIC DIAGRAM FP605 TYPE 12 CONFIGURED
CHECKED: K. MALUSIC	DATE: 11/15/22	
APPROVED: R. JENSEN	DATE: 11/15/22	
ORIGINAL DESIGN: K. PEOPLES	DATE: 11/14/22	

SIZE: D	REVISION: 00	PAGE: 1 of 3
DRAWING #: DS.F6C2.01		

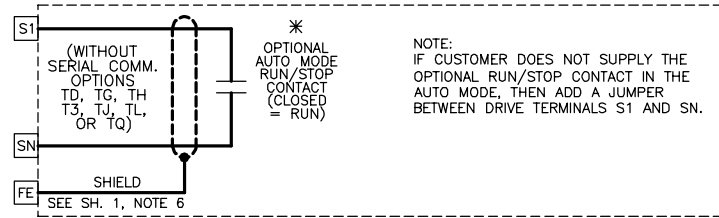
CONTROL TRANSFORMER AND CABINET BLOWER(S)

INPUT VOLTS	TERMINALS		JUMPER LOCATION
	A	B	
208	(H1)	(H2)	NONE
240	(H1)	(H4)	(H1) TO (H3) AND (H2) TO (H4)
460/480	(H1)	(H4)	(H2) TO (H3)



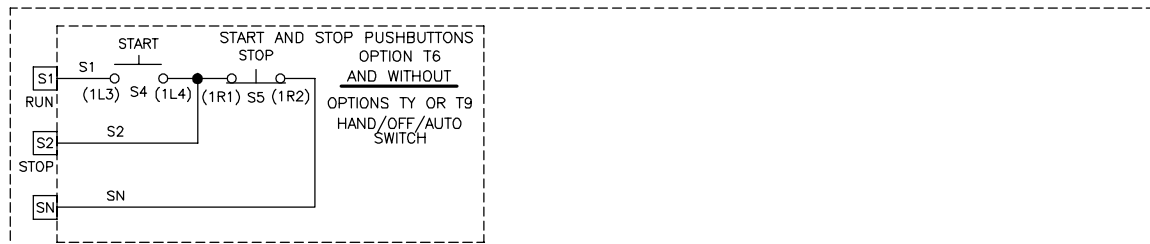
<b>YASKAWA</b>	DRAWN BY:	K. PEOPLES	DATE:	11/14/22	TITLE:	SCHEMATIC DRAWING				
	CHECKED:	K. MALUSIC	DATE:	11/15/22		FP605 TYPE 12 CONFIGURED				
THIS DOCUMENT AND INFORMATION CONTAINED HEREIN ARE CONFIDENTIAL, AND CANNOT BE COPIED OR DISCLOSED IN WHOLE OR IN PART WITHOUT THE EXPRESS WRITTEN CONSENT OF YASKAWA AMERICA INC.	TECH:		DATE:		SIZE:	D	REVISION:	00	PAGE:	2 of 3
	APPROVED:	R. JENSEN	DATE:	11/15/22	DRAWING#:	DS.F6C2.01				
	ORIGINAL DESIGN:	K. PEOPLES	DATE:	11/15/22						

RUN/STOP CONTROL (FROM SHEET 1)

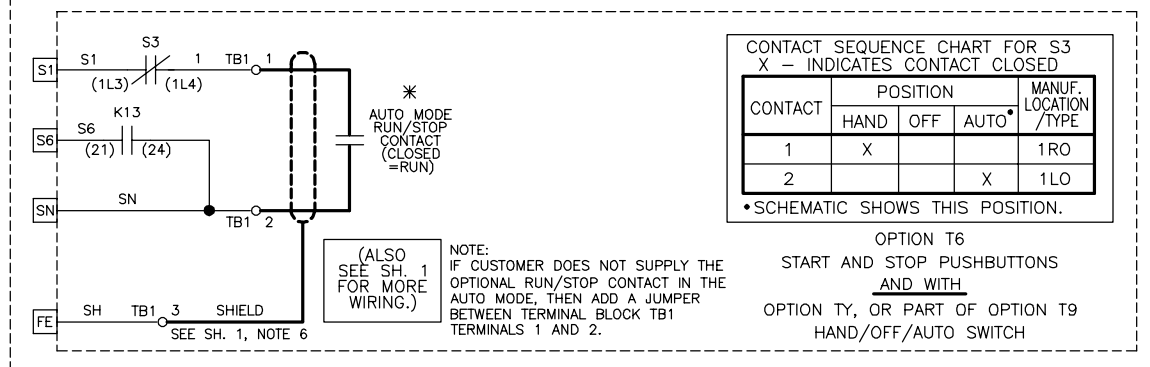


NOTE: IF CUSTOMER DOES NOT SUPPLY THE OPTIONAL RUN/STOP CONTACT IN THE AUTO MODE, THEN ADD A JUMPER BETWEEN DRIVE TERMINALS S1 AND SN.

OR



OR



CONTACT SEQUENCE CHART FOR S3  
X - INDICATES CONTACT CLOSED

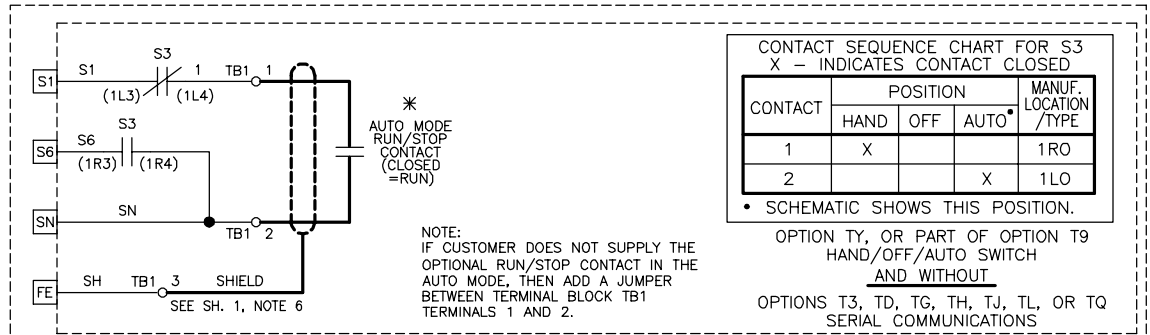
CONTACT	POSITION			MANUF. LOCATION /TYPE
	HAND	OFF	AUTO*	
1	X			1RO
2			X	1LO

\* SCHEMATIC SHOWS THIS POSITION.

OPTION T6  
START AND STOP PUSHBUTTONS  
AND WITH  
OPTION TY, OR PART OF OPTION T9  
HAND/OFF/AUTO SWITCH

NOTE: IF CUSTOMER DOES NOT SUPPLY THE OPTIONAL RUN/STOP CONTACT IN THE AUTO MODE, THEN ADD A JUMPER BETWEEN TERMINAL BLOCK TB1 TERMINALS 1 AND 2.  
(ALSO SEE SH. 1 FOR MORE WIRING.)

OR



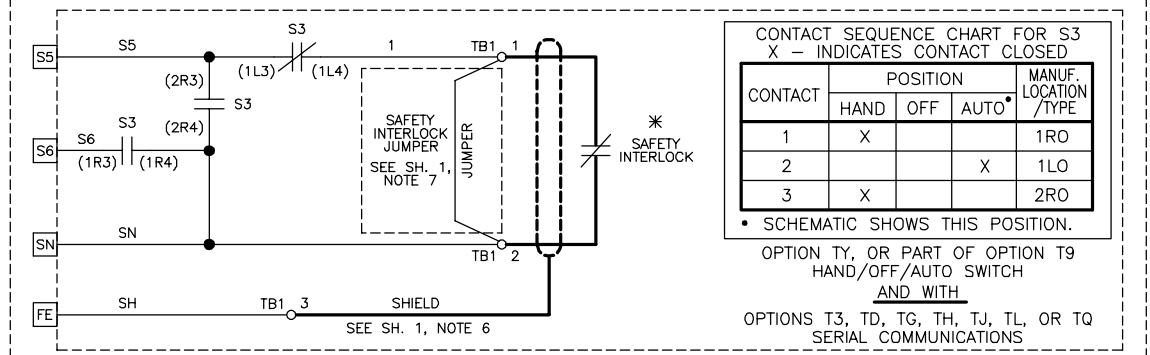
CONTACT SEQUENCE CHART FOR S3  
X - INDICATES CONTACT CLOSED

CONTACT	POSITION			MANUF. LOCATION /TYPE
	HAND	OFF	AUTO*	
1	X			1RO
2			X	1LO

\* SCHEMATIC SHOWS THIS POSITION.

OPTION TY, OR PART OF OPTION T9  
HAND/OFF/AUTO SWITCH  
AND WITHOUT  
OPTIONS T3, TD, TG, TH, TJ, TL, OR TQ  
SERIAL COMMUNICATIONS

OR

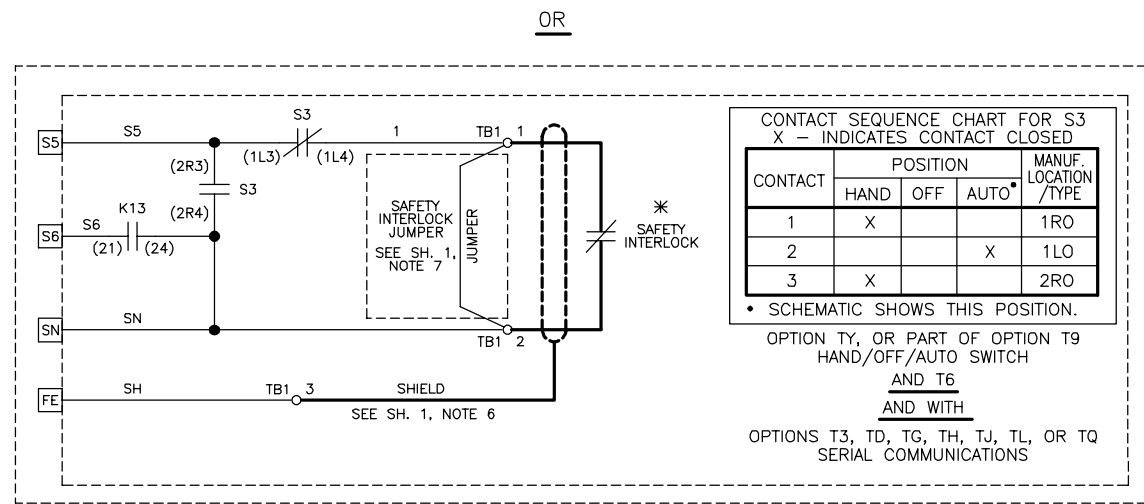


CONTACT SEQUENCE CHART FOR S3  
X - INDICATES CONTACT CLOSED

CONTACT	POSITION			MANUF. LOCATION /TYPE
	HAND	OFF	AUTO*	
1	X			1RO
2			X	1LO
3	X			2RO

\* SCHEMATIC SHOWS THIS POSITION.

OPTION TY, OR PART OF OPTION T9  
HAND/OFF/AUTO SWITCH  
AND WITH  
OPTIONS T3, TD, TG, TH, TJ, TL, OR TQ  
SERIAL COMMUNICATIONS



CONTACT SEQUENCE CHART FOR S3  
X - INDICATES CONTACT CLOSED

CONTACT	POSITION			MANUF. LOCATION /TYPE
	HAND	OFF	AUTO*	
1	X			1RO
2			X	1LO
3	X			2RO

\* SCHEMATIC SHOWS THIS POSITION.

OPTION TY, OR PART OF OPTION T9  
HAND/OFF/AUTO SWITCH  
AND T6  
AND WITH  
OPTIONS T3, TD, TG, TH, TJ, TL, OR TQ  
SERIAL COMMUNICATIONS

<b>YASKAWA</b>	DRAWN BY: K. PEOPLES	DATE: 11/14/22	TITLE: SCHEMATIC DRAWING FP605 TYPE 12 CONFIGURED
	CHECKED: K. MALUSIC	DATE: 11/15/22	
APPROVED: R. JENSEN	DATE: 11/15/22	DATE: 11/15/22	SIZE: D
	ORIGINAL DESIGN: K. PEOPLES	DATE: 11/15/22	REVISION: 00
THIS DOCUMENT AND INFORMATION CONTAINED HEREIN ARE CONFIDENTIAL, AND CANNOT BE COPIED OR DISCLOSED IN WHOLE OR IN PART WITHOUT THE EXPRESS WRITTEN CONSENT OF YASKAWA AMERICA INC.			PAGE: 3 of 3
DRAWING #: DS.F6C2.01			