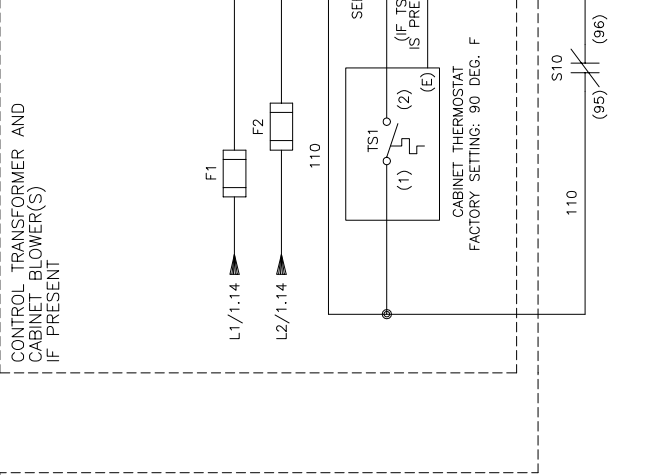


1 2 3 4 5 6 7 8 9 10 11 12 13 14 15 16 17

A B C D E F G H J K

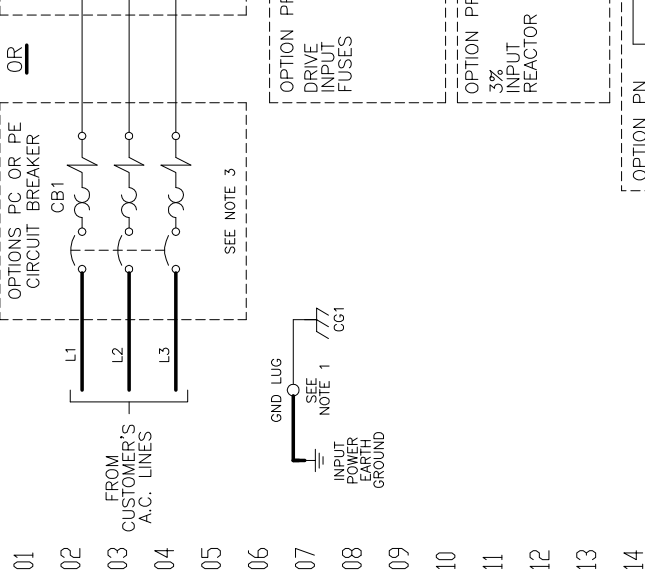
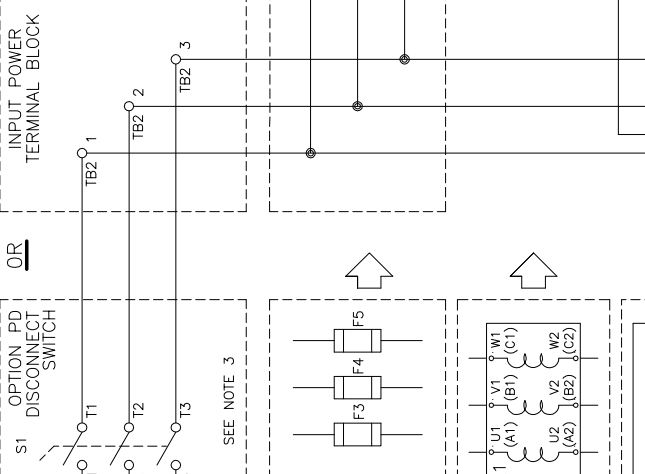
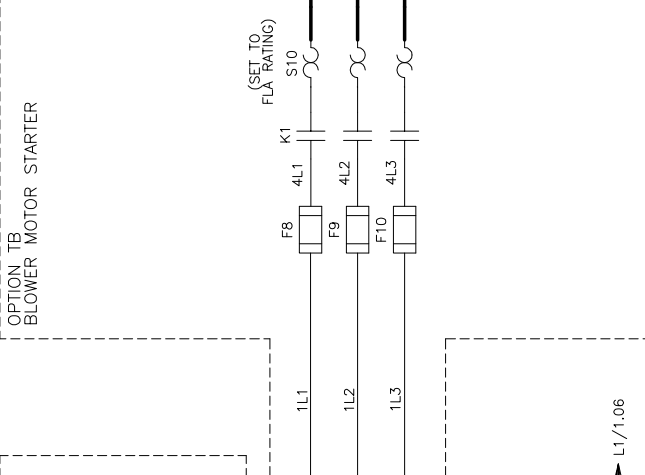
**CONTROL TRANSFORMER PRIMARY CONNECTIONS**

INPUT VOLTS	TERMINALS	JUMPER LOCATION
230/240	(H1) (H4)	(H1) TO (H3)
460/480	(H1) (H4)	(H2) TO (H4)
600	(H1) (H2)	NONE



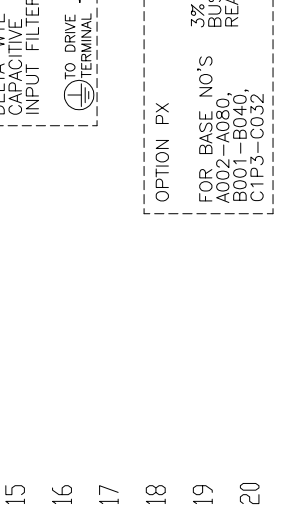
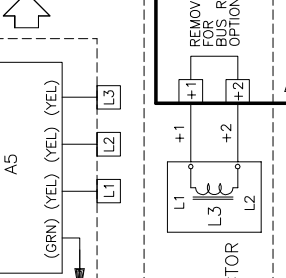
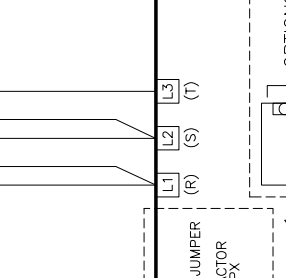
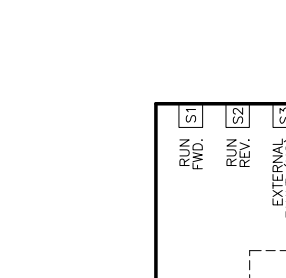
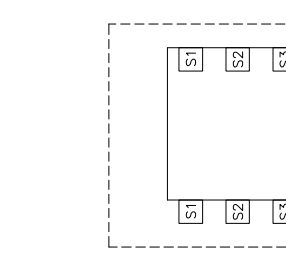
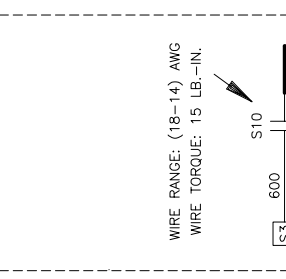
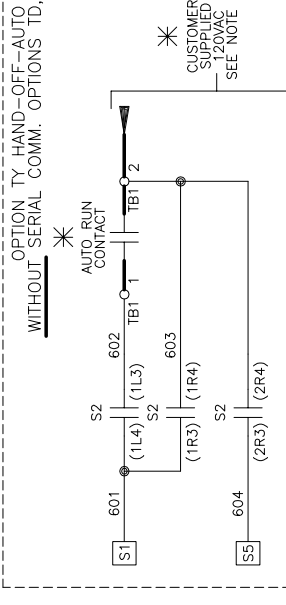
**BLOWER MOTOR FOR P1000 CONFIG.**

FLA RATING	AMPS	VOLTS
3.0	2.2 - 360	240
1.5	1.6 - 477	480
3.0	515 - 660	480
1.2	1.3 - 242	600



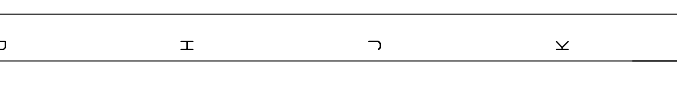
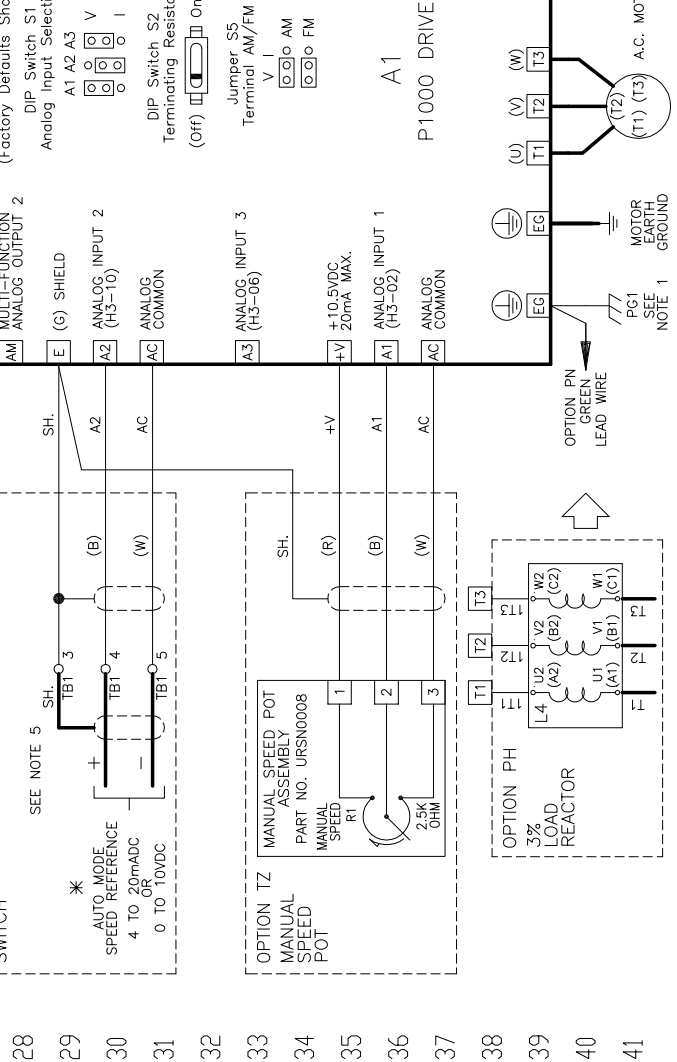
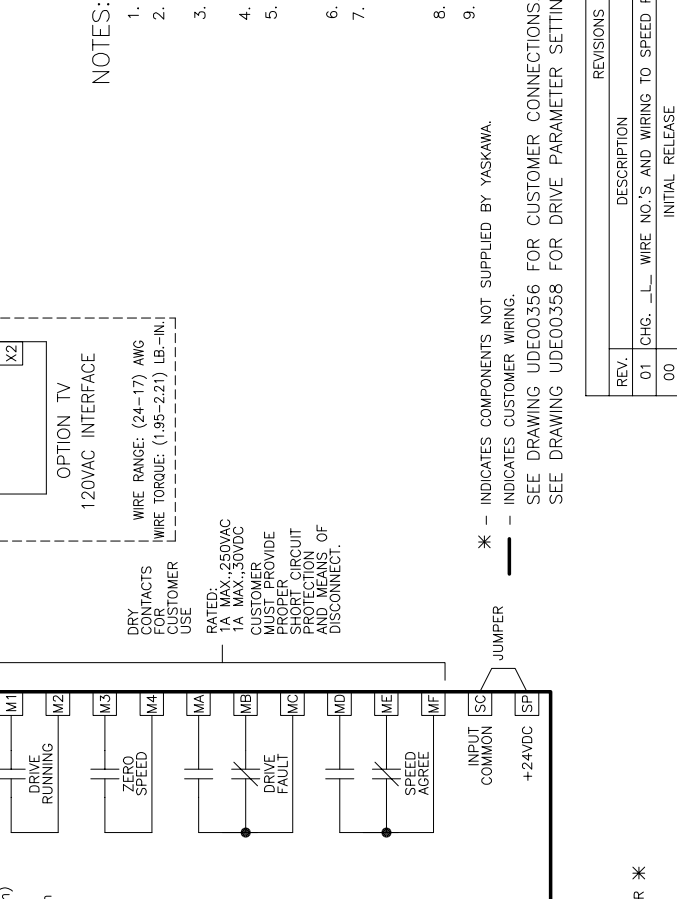
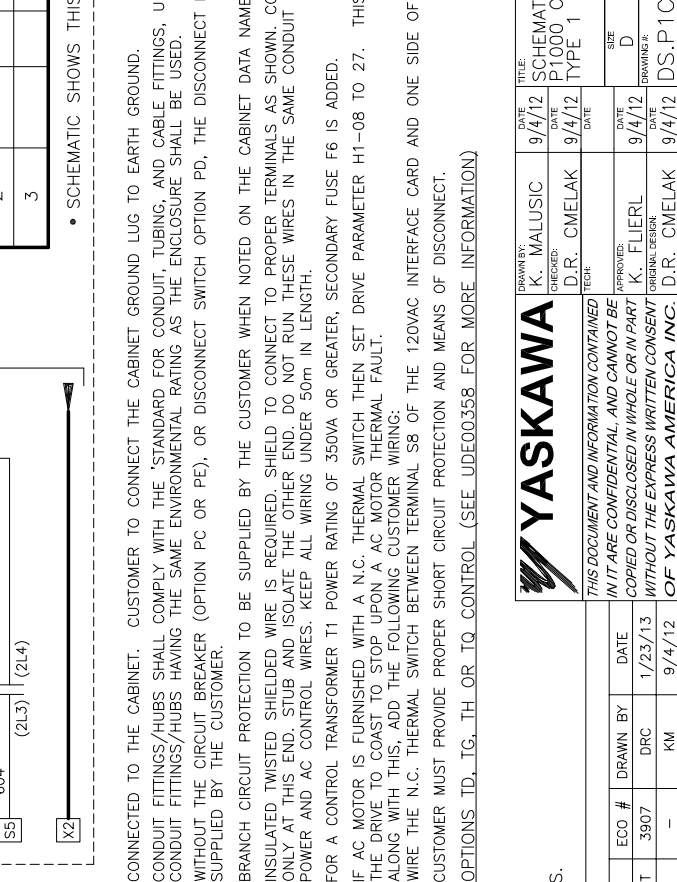
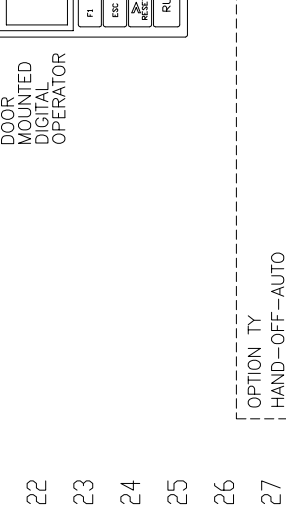
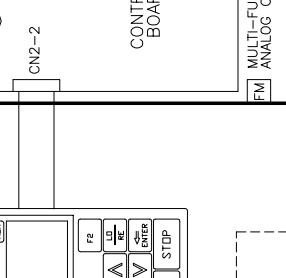
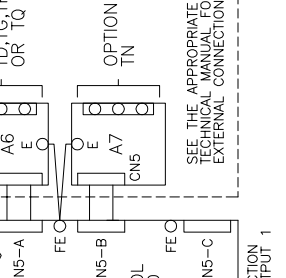
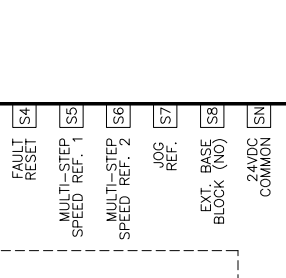
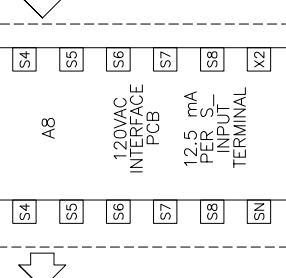
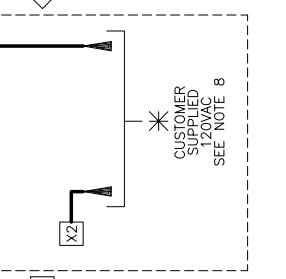
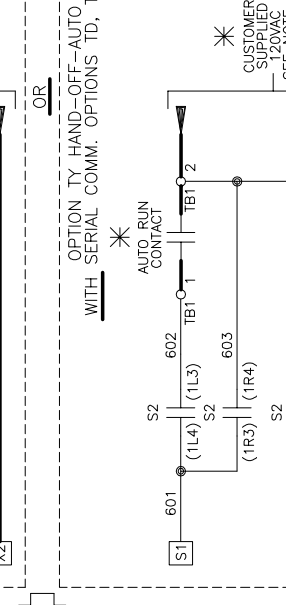
**CONTACT SEQUENCE CHART FOR S2**

CONTACT	POSITION	MANUF. LOCATION /TYPE
1	HAND OFF	1R0
2	AUTO	1L0
3	AUTO	2R0



**CONTACT SEQUENCE CHART FOR S2**

CONTACT	POSITION	MANUF. LOCATION /TYPE
1	HAND OFF	1R0
2	AUTO	1L0
3	AUTO	2L0



- NOTES:**
- CONNECTED TO THE CABINET. CUSTOMER TO CONNECT THE CABINET GROUND LUG TO EARTH GROUND.
  - CONDUIT FITTINGS/HUBS SHALL COMPLY WITH THE 'STANDARD FOR CONDUIT, TUBING, AND CABLE FITTINGS, UL 514B', OR CONDUIT FITTINGS/HUBS HAVING THE SAME ENVIRONMENTAL RATING AS THE ENCLOSURE SHALL BE USED.
  - WITHOUT THE CIRCUIT BREAKER (OPTION PC OR PE), OR DISCONNECT SWITCH OPTION PD, THE DISCONNECT MEANS MUST BE SUPPLIED BY THE CUSTOMER.
  - BRANCH CIRCUIT PROTECTION TO BE SUPPLIED BY THE CUSTOMER WHEN NOTED ON THE CABINET DATA NAMEPLATE.
  - INSULATED TWISTED SHIELDED WIRE IS REQUIRED. SHIELD TO CONNECT TO PROPER TERMINALS AS SHOWN. CONNECT THE SHIELD ONLY AT THIS END. STUB AND ISOLATE THE OTHER END. DO NOT RUN THESE WIRES IN THE SAME CONDUIT AS THE AC POWER AND AC CONTROL WIRES. KEEP ALL WIRING UNDER 50m IN LENGTH.
  - FOR A CONTROL TRANSFORMER T1 POWER RATING OF 350VA OR GREATER, SECONDARY FUSE F6 IS ADDED.
  - IF AC MOTOR IS FURNISHED WITH A N.C. THERMAL SWITCH THEN SET DRIVE PARAMETER H1-08 TO 27. THIS WILL CAUSE THE DRIVE TO COAST TO STOP UPON A AC MOTOR THERMAL FAULT. ALONG WITH THIS, ADD THE FOLLOWING CUSTOMER WIRING:
  - WIRE THE N.C. THERMAL SWITCH BETWEEN TERMINAL S8 OF THE 120VAC INTERFACE CARD AND ONE SIDE OF THE 120VAC SOURCE.
  - CUSTOMER MUST PROVIDE PROPER SHORT CIRCUIT PROTECTION AND MEANS OF DISCONNECT.
  - OPTIONS TD, TG, TH OR TQ CONTROL (SEE UDE00358 FOR MORE INFORMATION)



**REVISIONS**

REV.	DESCRIPTION	ECO #	DATE	INITIAL RELEASE
01	CHG. _L_ WIRE NO.'S AND WIRING TO SPEED POT	3907	1/23/13	
00			9/4/12	

**SCHEMATIC DIAGRAM P1000 CONFIGURED**

DATE	DATE	DATE	DATE	DATE
9/4/12	9/4/12	9/4/12	9/4/12	9/4/12

**SCHEMATIC DIAGRAM P1000 CONFIGURED**

DATE	DATE	DATE	DATE	DATE
9/4/12	9/4/12	9/4/12	9/4/12	9/4/12