

TABLE 1 FILTER WIRING CHART

FILTER MANUFACTURER	INPUT TERMINALS	OUTPUT TERMINALS	MFR OPTION CODE(S)	x.xx	y.yy
ARTECHE	1=U, 2=V, 3=W	4=X, 5=Y, 6=Z	BY	3.07	3.07

WIRES x.xx & y.yy ONLY REQUIRED IF MFR OPTION CODE NOTED ABOVE IS ORDERED BY THE CUSTOMER.

NOTES:

- CONNECTED TO THE CABINET. CUSTOMER TO CONNECT THE CABINET GROUND LUGS TO EARTH GROUND AND UTILITY GROUND.
- CONDUIT FITTINGS/HUBS SHALL COMPLY WITH THE STANDARD FOR CONDUIT, TUBING, AND CABLE FITTINGS, UL 514B.
- LIGHTNING PROTECTION OPTION P2 IS TO BE INSTALLED ON THE VOLTAGE TAP OFFS AT THE BREAKER IF REQUIRED.
- BRANCH CIRCUIT PROTECTION TO BE SUPPLIED BY THE CUSTOMER WHEN NOTED ON THE CABINET DATA NAMEPLATE.
- INSULATED TWISTED SHIELDED WIRE IS REQUIRED. SHIELD TO CONNECT TO PROPER TERMINALS AS SHOWN. CONNECT THE SHIELD ONLY AT THIS END. STUB AND ISOLATE THE OTHER END. DO NOT RUN THESE WIRES IN THE SAME CONDUIT AS THE AC POWER AND AC CONTROL WIRES. KEEP ALL WIRING UNDER 50m IN LENGTH.
- CUSTOMER TO ADJUST THE THERMOSTAT ON THE SPACE HEATER HR1 FOR THE MINIMUM DESIRED TEMPERATURE INSIDE THE DRIVE CABINET. THIS SET TEMPERATURE IS NORMALLY SELECTED TO BE SLIGHTLY HIGHER THAN THE MINIMUM AMBIENT TEMPERATURE OF THE AIR SURROUNDING THE CABINET, AND IS THE TEMPERATURE AT WHICH THE SPACE HEATER HR1 WILL SHUT OFF.
- FOR A CONTROL TRANSFORMER T1 POWER RATING OF 350VA OR GREATER, SECONDARY FUSE F6 IS ADDED.
- IF AC MOTOR IS FURNISHED WITH A N.C. THERMAL SWITCH THEN SET DRIVE PARAMETER H1-08 TO 27. THIS WILL CAUSE THE DRIVE TO COAST TO STOP UPON AN AC MOTOR THERMAL FAULT.
- ALONG WITH THIS, ADD THE FOLLOWING CUSTOMER WIRING:  
WIRE THE N.C. THERMAL SWITCH BETWEEN TERMINAL S8 OF THE 120VAC INTERFACE CARD AND ONE SIDE OF THE 120VAC SOURCE.
- OPTIONS ID, IG, IH, IL, IO, IQ, IR, IS, IT, IU, IV, IW, IX, IY, IZ OR IJ OR IJ CONTROL (SEE UDE00436 FOR MORE INFORMATION)
- CUSTOMER TO REPLACE THE JUMPER WITH NORMALLY CLOSED SAFETY INTERLOCKS, IF APPLICABLE.
- CUSTOMER MUST PROVIDE PROPER SHORT CIRCUIT PROTECTION AND MEANS OF DISCONNECT.

REVISIONS

REV.	DESCRIPTION	ECO #	DRAWN BY	DATE
01	CORRECTED CONTACT LOCATION REFERENCE	5166	NSL	04/01/14
00	INITIAL RELEASE	-	NSL	09/25/13

SEE DRAWING UDE00434 FOR CUSTOMER CONNECTION TABLES.  
SEE DRAWING UDE00436 FOR DRIVE PARAMETER SETTINGS.

\* - INDICATES COMPONENTS NOT SUPPLIED BY YASKAWA.  
--- INDICATES CUSTOMER WIRING.

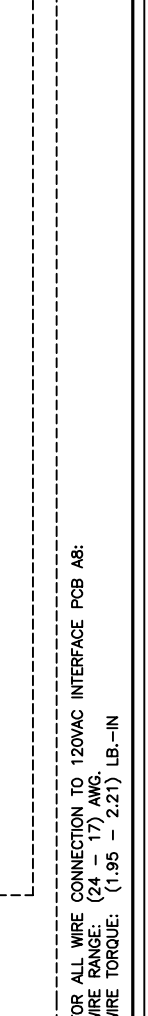
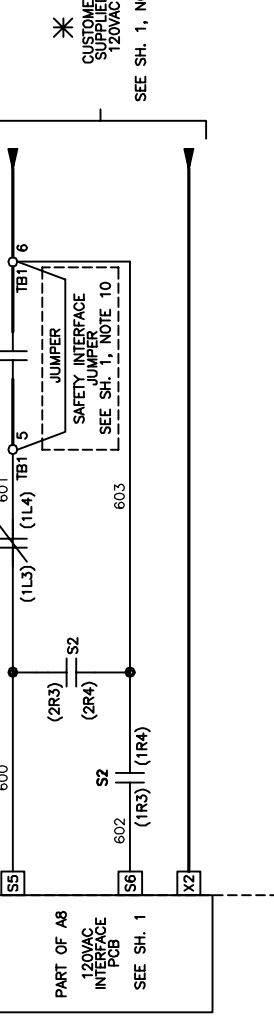
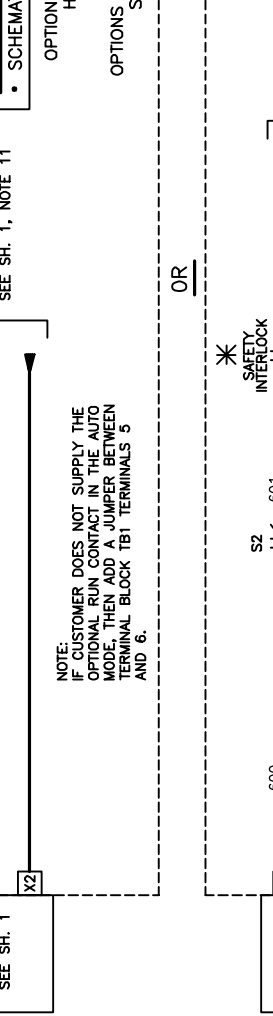
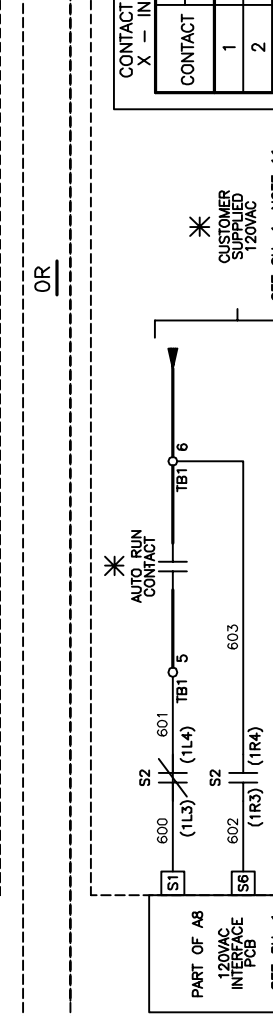
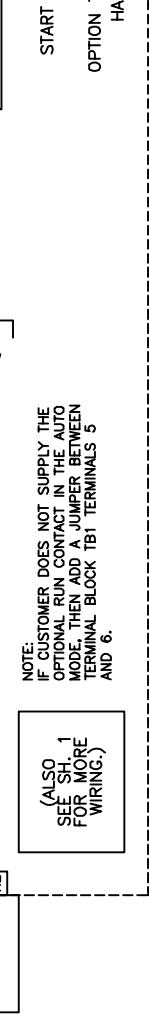
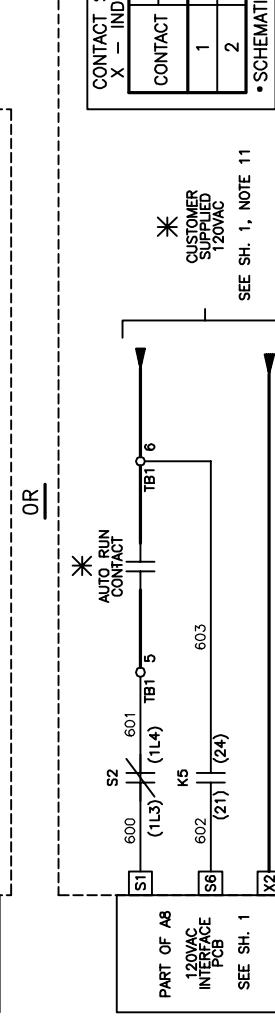
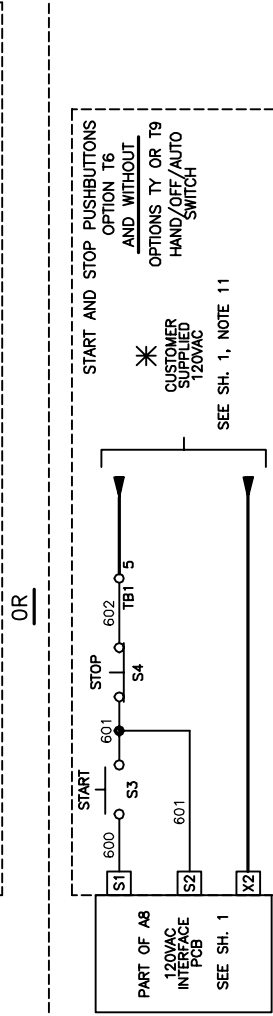
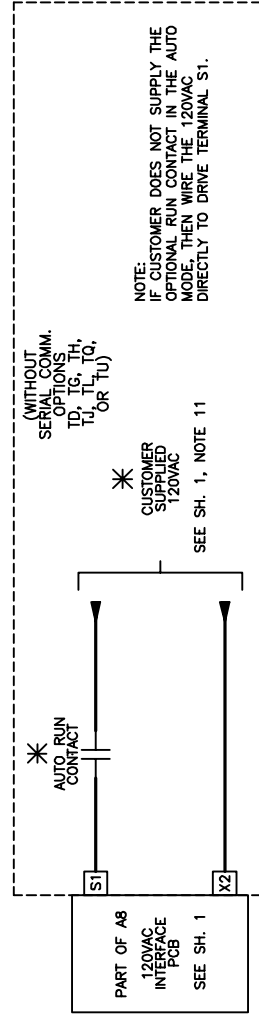
YASKAWA

DATE: 09/25/13  
DRAWN BY: N. LAWS  
CHECKED BY: D.R. CMELAK  
DATE: 09/25/13  
DATE: 09/25/13  
DATE: 09/25/13

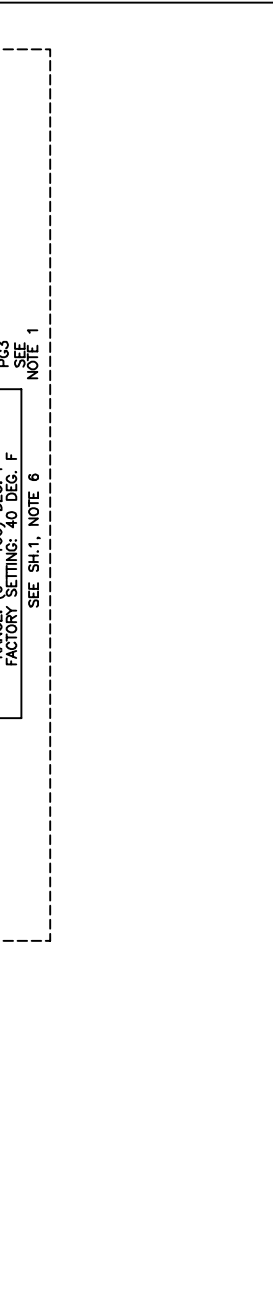
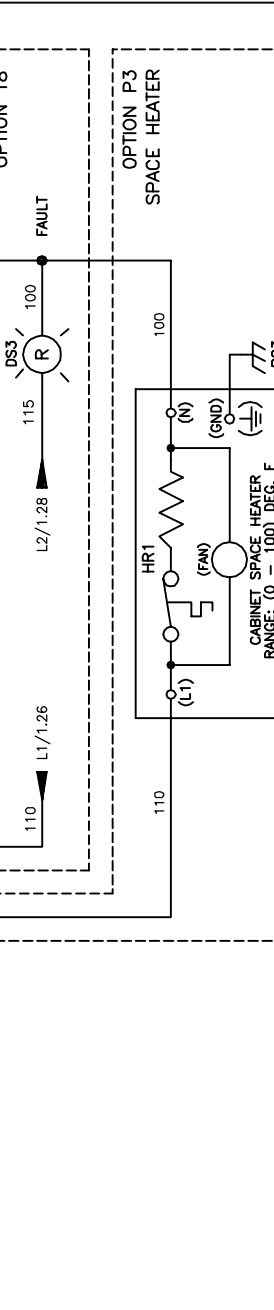
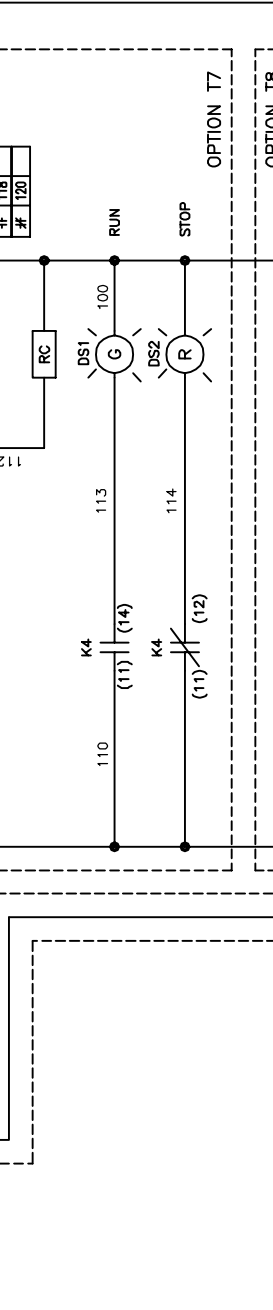
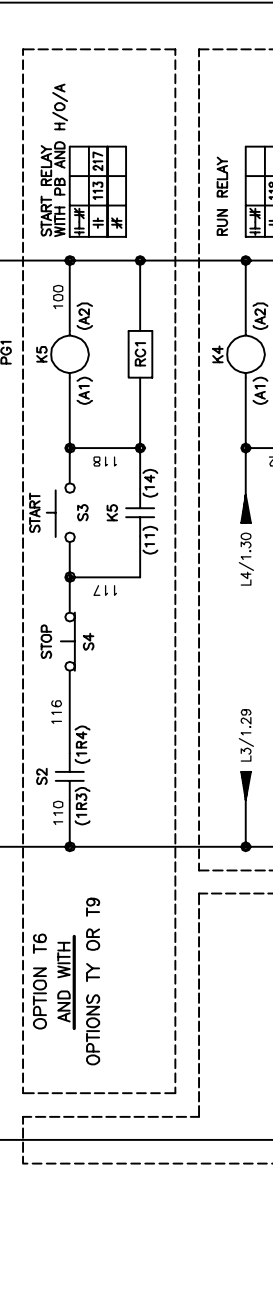
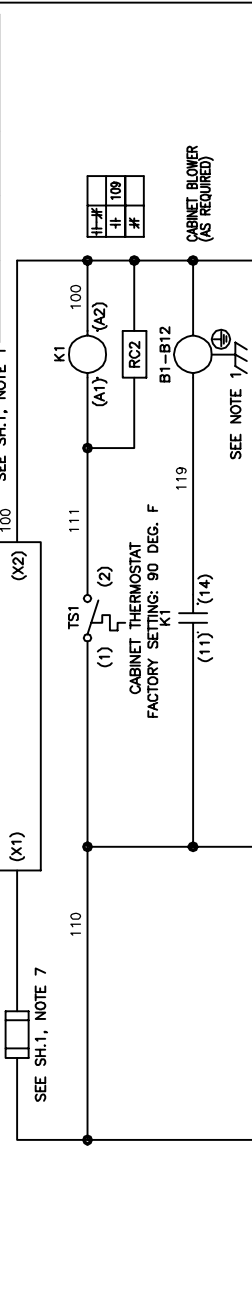
SCHEMATIC DIAGRAM  
IQPUMP1000 CONFIGURED  
TYPE 3R  
HARMONIC FILTER READY  
PAGE 1 of 3

DS:Q1C3R:16

RUN/STOP CONTROL WITH OPTION TV (FROM SHEET 1)



CONTROL TRANSFORMER PRIMARY CONNECTIONS		TERMINALS		JUMPER LOCATION	
INPUT VOLTS		A	B		
208		(H1)	(H2)	(H1)	(H3)
230/240		(H1)	(H4)	(H2)	(H4)
460/480		(H1)	(H4)	(H2)	(H3)
600		(H1)	(H2)	(H2)	(H3)



SEE SHEET 1 FOR NOTES.



DATE	09/25/13	TITLE	SCHEMATIC DIAGRAM
DESIGNED BY	N. LAWS	DATE	09/25/13
CHECKED BY	D.R. CMEALK	DATE	09/25/13
TECH		DATE	09/25/13
APPROVED BY	K. FLIERL	DATE	09/25/13
DESIGNED BY	N. LAWS	DATE	09/25/13

SIZE	D	REVISION	01	PAGE	2 of 3
TYPE	3R	HARMONIC FILTER READY			
TYPE	3R	TYPE			
TYPE		TYPE			
TYPE		TYPE			

THIS DOCUMENT AND INFORMATION CONTAINED HEREIN IS CONFIDENTIAL AND NOT TO BE REPRODUCED OR DISCLOSED IN WHOLE OR IN PART WITHOUT THE EXPRESS WRITTEN CONSENT OF YASKAWA AMERICA, INC.

DS-Q1C3R.16

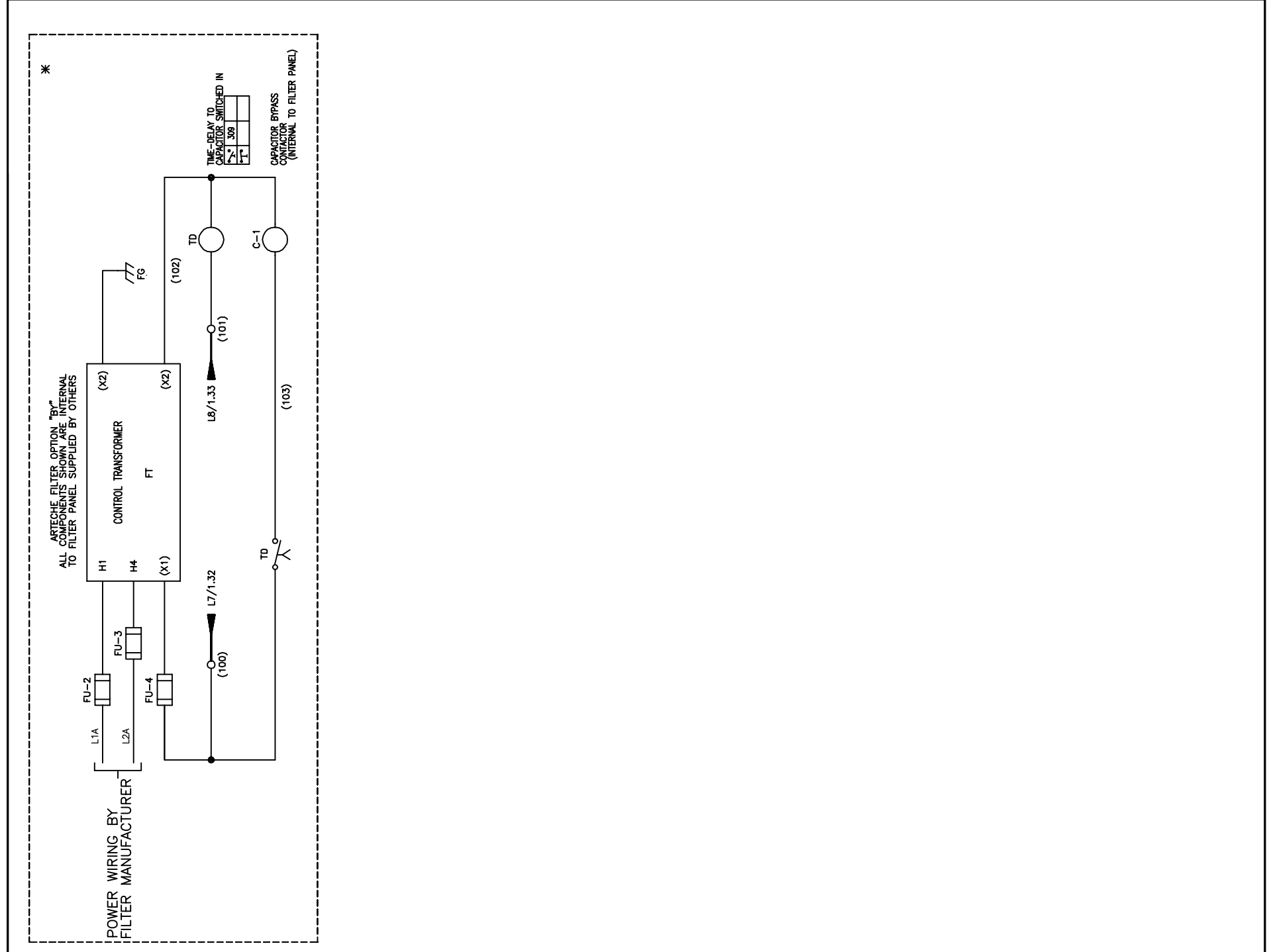


TABLE 2 ARTECHE FILTER SELECTION TABLE

BASE IQPUMP 1000 MODEL NO.	CIMR-PW440	CURRENT	ARTECHE LPF SERIES HARMONIC FILTER
Q1C3B052	058	52	LPF 0061 480 K *** 65KASCCR LG ##
Q1C3B065	072	65	LPF 0071 480 K *** 65KASCCR LG ##
Q1C3B077	088	77	LPF 0084 480 K *** 65KASCCR LG ##
Q1C3B096	103	96	LPF 0102 480 K *** 65KASCCR LG ##
Q1C3B124	139	124	LPF 0138 480 K *** 65KASCCR LG ##
Q1C3B156	165	156	LPF 0175 480 K *** 65KASCCR LG ##
Q1C3B180	208	180	LPF 0210 480 K *** 65KASCCR LG ##
Q1C3B240	250	240	LPF 0286 480 K *** 65KASCCR LG ##
Q1C3B302	362	302	LPF 0334 480 K *** 65KASCCR LG ##
Q1C3B361	362	361	LPF 0406 480 K *** 65KASCCR LG ##

WHERE \*\*\* = N1, N3R, or OPN; WHERE ## = BY or is blank; or - = B or S

SEE SHEET 1 FOR NOTES.



DRAWN BY N. LAWS	DATE 09/25/13	TITLE SCHEMATIC DIAGRAM
CHECKED D.R. CMELAK	DATE 09/25/13	IQPUMP1000 CONFIGURED
TECH	DATE	TYPE 3R
APPROVED BY K. FLIERL	DATE 09/25/13	HARMONIC FILTER READY
REVISION	SIZE D	REVISION 01
OF YASKAWA AMERICA, INC.	DRAWING # DS.Q1C3R.16	PAGE 3 of 3

THIS PAGE FOR CUSTOMER USE ONLY