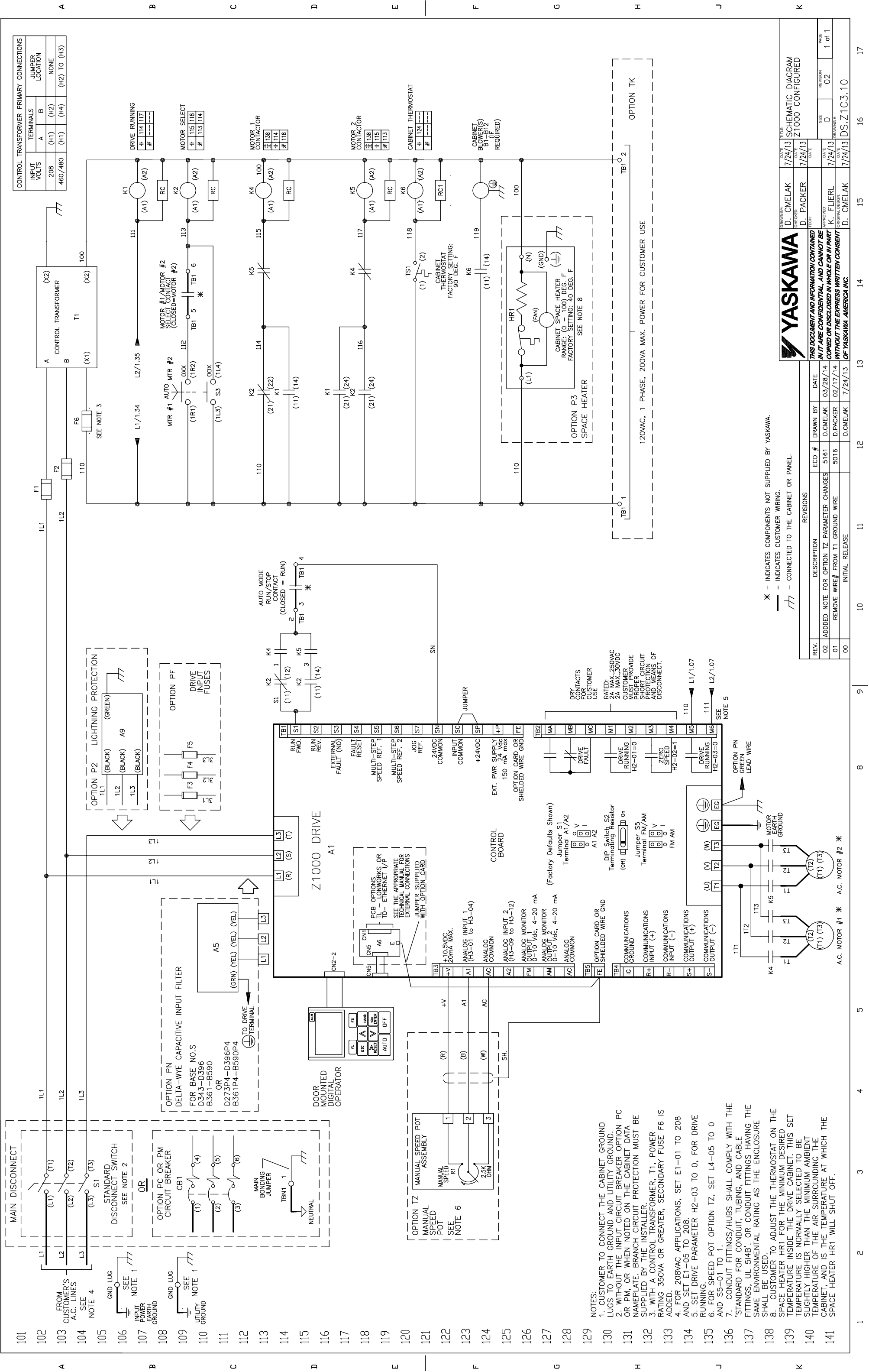


101
102
103
104
105
106
107
108
109
110
111
112
113
114
115
116
117
118
119
120
121
122
123
124
125
126
127
128
129
130
131
132
133
134
135
136
137
138
139
140
141



- NOTES:
1. CUSTOMER TO CONNECT THE CABINET GROUND LUGS TO EARTH GROUND AND UTILITY GROUND.
 2. WITHOUT THE INPUT CIRCUIT BREAKER OPTION PC OR PM, OR WHEN NOTED ON THE CABINET DATA NAMEPLATE, BRANCH CIRCUIT PROTECTION MUST BE SUPPLIED BY THE INSTALLER.
 3. WITH A CONTROL TRANSFORMER, T1, POWER RATING 350VA OR GREATER, SECONDARY FUSE F6 IS ADDED.
 4. FOR 208VAC APPLICATIONS, SET E1-01 TO 208 AND SET E1-05 TO 208.
 5. SET DRIVE PARAMETER H2-03 TO 0, FOR DRIVE RUNNING.
 6. FOR SPEED POT OPTION TZ, SET L4-05 TO 0 AND S5-01 TO 1.
 7. STANDARD FITTINGS/HUBS SHALL COMPLY WITH THE FITTINGS, UL 514B, OR CONDUIT FITTINGS HAVING THE SAME ENVIRONMENTAL RATING AS THE ENCLOSURE SHALL BE USED.
 8. CUSTOMER TO ADJUST THE THERMOSTAT ON THE SPACE HEATER HR1 FOR THE MINIMUM DESIRED TEMPERATURE INSIDE THE DRIVE CABINET. THIS SET POINT IS NORMALLY SELECTED TO BE SLIGHTLY HIGHER THAN THE MINIMUM AMBIENT TEMPERATURE OF THE AIR SURROUNDING THE CABINET, AND IS THE TEMPERATURE AT WHICH THE SPACE HEATER HR1 WILL SHUT OFF.

* - INDICATES COMPONENTS NOT SUPPLIED BY YASKAWA.
 - - INDICATES CUSTOMER WIRING.
 / / - CONNECTED TO THE CABINET OR PANEL.

REV.	DESCRIPTION	ECO #	DATE	DRAWN BY	DATE
02	ADDED NOTE FOR OPTION TZ PARAMETER CHANGES	5161	03/28/14	D.CMELAK	03/28/14
01	REMOVE WIRE# FROM T1 GROUND WIRE	5016	02/17/14	D.PACKER	02/17/14
00	INITIAL RELEASE			D.CMELAK	7/24/13

REV.	DESCRIPTION	ECO #	DATE	DRAWN BY	DATE
02	ADDED NOTE FOR OPTION TZ PARAMETER CHANGES	5161	03/28/14	D.CMELAK	03/28/14
01	REMOVE WIRE# FROM T1 GROUND WIRE	5016	02/17/14	D.PACKER	02/17/14
00	INITIAL RELEASE			D.CMELAK	7/24/13

REV.	DESCRIPTION	ECO #	DATE	DRAWN BY	DATE
02	ADDED NOTE FOR OPTION TZ PARAMETER CHANGES	5161	03/28/14	D.CMELAK	03/28/14
01	REMOVE WIRE# FROM T1 GROUND WIRE	5016	02/17/14	D.PACKER	02/17/14
00	INITIAL RELEASE			D.CMELAK	7/24/13

REV.	DESCRIPTION	ECO #	DATE	DRAWN BY	DATE
02	ADDED NOTE FOR OPTION TZ PARAMETER CHANGES	5161	03/28/14	D.CMELAK	03/28/14
01	REMOVE WIRE# FROM T1 GROUND WIRE	5016	02/17/14	D.PACKER	02/17/14
00	INITIAL RELEASE			D.CMELAK	7/24/13

YASKAWA
 THIS DOCUMENT AND INFORMATION CONTAINED HEREIN IS CONFIDENTIAL AND CANNOT BE REPRODUCED OR DISCLOSED IN WHOLE OR IN PART WITHOUT THE EXPRESS WRITTEN CONSENT OF YASKAWA AMERICA INC.