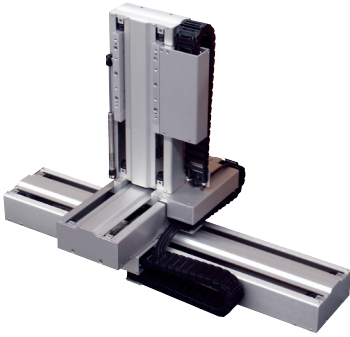


Gantry Toolbox

MOTIONWORKS® IEC TOOLBOXES

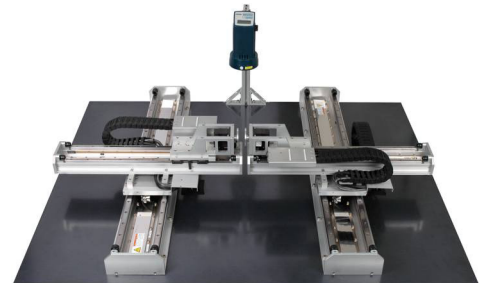


Gantry control is used in many parts-transfer operations as a means to combine motion with a supportive physical structure. Gantry, also known as Cartesian Robots, are often used in **pick-and-place** or **assembly** operations where articulated arms are not desired.

In some cases, the gantry consists of simple, cantilevered, XY, XZ, or XYZ configurations. In others that involve wider travel ranges, a dual XX'Y or XX'YY' configuration is necessary to properly support the payload.

The Gantry Toolbox from Yaskawa provides a library of PLCopen-based functions for MP2000iec controllers that users can import into their IEC61131-3 control program.

Leveraging the pre-built library will save program development time for the software engineer and help speed project completion.



Yaskawa application toolboxes provide:

- Improved Ease of Use
- Reduced Risk
- Reduced Total Cost of Ownership

For more information and to discuss your application, contact your local Yaskawa Channel Partner or find them at www.yaskawa.com/partners.

