

Subject: Product Note	Product: PMC-U-MP*****	Doc#: PN.MCD.09.101
Title: Connecting an MPiec Series Controller to DeviceNet Slaves		

Connecting the MPiec Series Controllers to DeviceNet Slaves

There are a number of third party gateways available that will convert EtherNet/IP to DeviceNet. Two devices have been tested and found to work.

They are available from Turck:

<http://www.turck-usa.com/>

and from RTA:

<http://www.rtaautomation.com/>

The following comparison shows the maximum number of DeviceNet slaves supported, bytes transferred over EtherNet/IP, and EtherNet/IP connections allowed for each device.

Manufacturer	Part Number	DeviceNet		EtherNet/IP	
		Slaves	Configuration	I/O	Number of Connections
Turck	BL-67-EN-IP-DN	64	Automatic	496 Bytes	12
RTA	455ED	32	Manual	396 Bytes	1

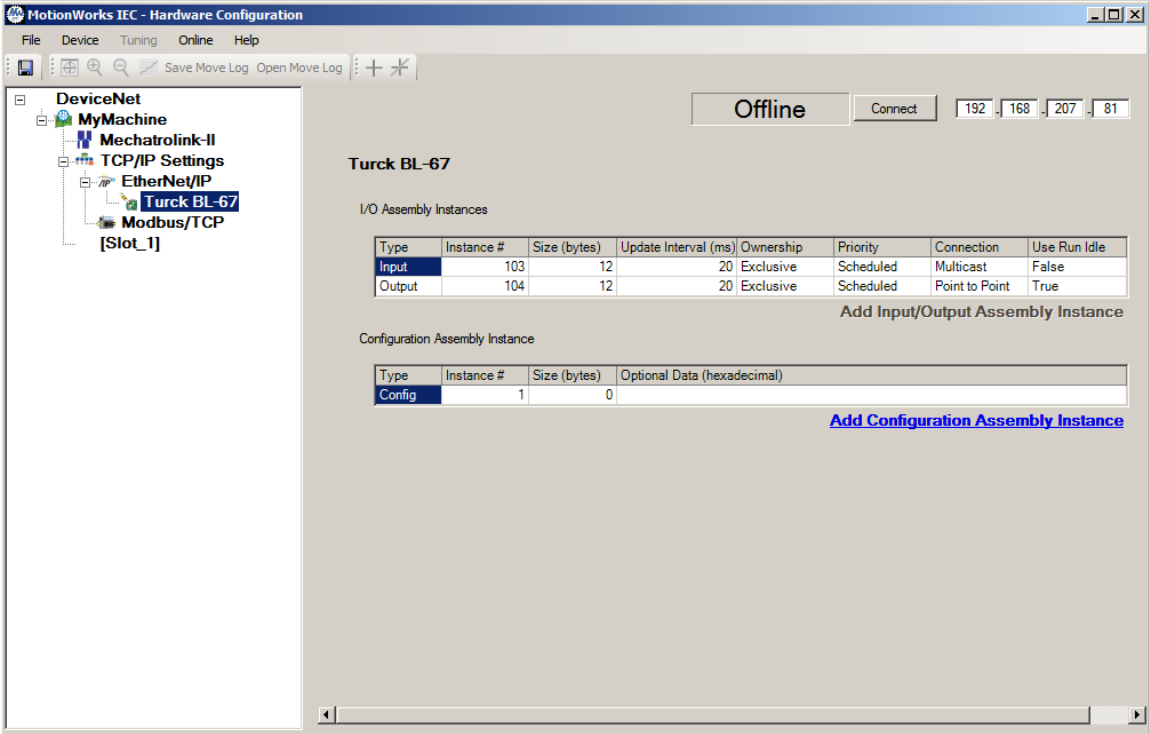
This product note will describe how to set up the MPiec Series Controller to communicate to the gateways. For information on how to configure the gateway, see the documentation available from the manufacturers website listed above.

Configuring the MPiec Series Controller

After opening a project in the MotionWorks IEC software and opening the Hardware Configuration, the first step is to configure an EtherNet/IP adapter.

Navigate to the EtherNet/IP node in the project tree and select “Add Adapter Device” on the bottom right of the screen. The following dialog will be shown.

Subject: Product Note	Product: PMC-U-MP*****	Doc#: PN.MCD.09.101
Title: Connecting an MPieC Series Controller to DeviceNet Slaves		



After completing the configuration, save and cycle power to the system.

Go to MotionWorks IEC and make, download and run the project.

Data should now be visible in variables created within the I/O group's address space. When there is a valid connection, the status variable should have a value of 0x1000 (4096 decimal). If the value is not 0x1000, see the Hardware Configuration's help for information on troubleshooting Ethernet/IP connections.

