

Title: How to update the SigmaLogic Software Package

Product(s): SigmaLogic, SigmaLogic7 Compact

Doc. No. PN.SigmaLogic.02

How to update the SigmaLogic Software Package

Title: How to update the SigmaLogic Software Package

Product(s): SigmaLogic, SigmaLogic7 Compact

Doc. No. PN.SigmaLogic.02

1. Purpose

This document will describe the step by step process of updating the SigmaLogic Software Package on an existing unit. The SigmaLogic Software Package includes four components that work together:

- 1) SigmaLogic Firmware
- 2) LogicWorks Configuration Utility
- 3) SigmaLogic Embedded Software
- 4) Add-on Instructions (AOIs)

Important Note: As shown in Fig. 1, the rows of the table denote compatible combinations of package components.

2. Steps for updating the SigmaLogic Software Package

Following are the steps required to update the SigmaLogic Software Package :

Step 1: Update SigmaLogic controller firmware to the compatible version.

Step 2: Install the compatible LogicWorks software version, open and update the Logicworks project file.

Step 3: Update the SigmaLogic embedded software using LogicWorks. For upgrades from v1.x to v2.x, Import and Send the Servopack Parameters to the SigmaLogic controller and reboot.

Step 4: Import the compatible version of AOIs and User defined Types (UDT) into the RSLogix program.

Title: How to update the SigmaLogic Software Package

Product(s): SigmaLogic, SigmaLogic7 Compact

Doc. No. PN.SigmaLogic.02

2.1. Update the SigmaLogic Firmware

Visit the link [DownloadSigmaLogicSoftwarePackage](#) . See the Release Notes for more information on the changes made for specific releases.

SigmaLogic Software Package					
Release Date	Release Notes	LogicWorks Configuration Utility	Add-On Instructions for RSLogix 5000	SigmaLogic Embedded Software	SigmaLogic Firmware
05/2017	RN.SigmaLogic.04	v2.0.0	v2.0.0	SigmaLogic v2.0.0	SigmaLogic v3.3.0
				SigmaLogic7 v2.0.0	SigmaLogic7 v3.3.0
11/2015	RN.SigmaLogic.03	v1.1.2	v1.2.0	v1.2.1	v3.0.0
12/2014	RN.SigmaLogic.02	v1.1.1		v1.2.0	
10/2014	RN.SigmaLogic.01	v1.1.0	v1.1.0	v1.1.0	

FIGURE 1: FIRMWARE DOWNLOAD LOCATION

Download the SigmaLogic firmware zip file and install it using a web browser paired to the IP address of the controller (**Do not unzip the firmware zip file**). Login to the unit using the following usernames and passwords as shown in Fig. 2. The User name and Password are both case-sensitive.

SigmaLogic

User Name : Admin

Password : MP2600

SigmaLogic7

User Name : Admin

Password : Sigma-7S

Title: How to update the SigmaLogic Software Package

Product(s): SigmaLogic, SigmaLogic7 Compact

Doc. No. PN.SigmaLogic.02

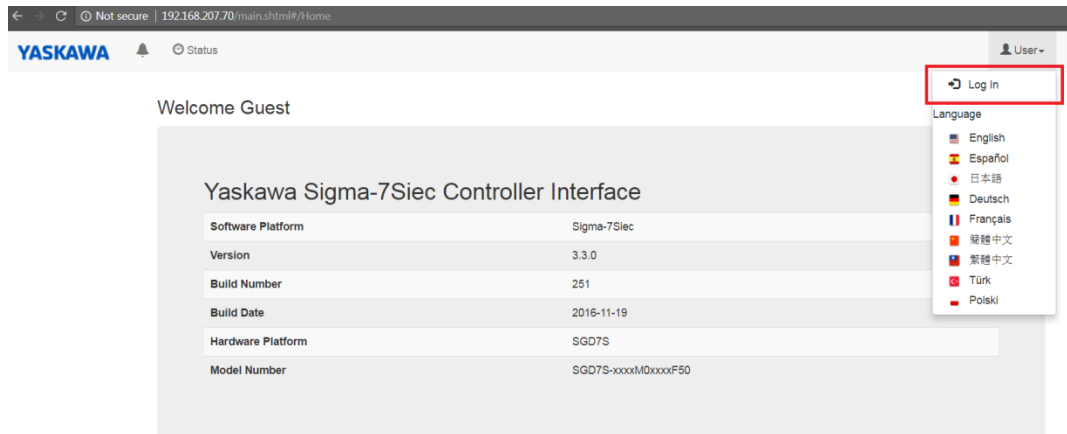


FIGURE 2: LOG IN CONTROLLER WEB BROWSER

Once logged in, navigate to *Setup -> Firmware Update* as shown in Fig. 3

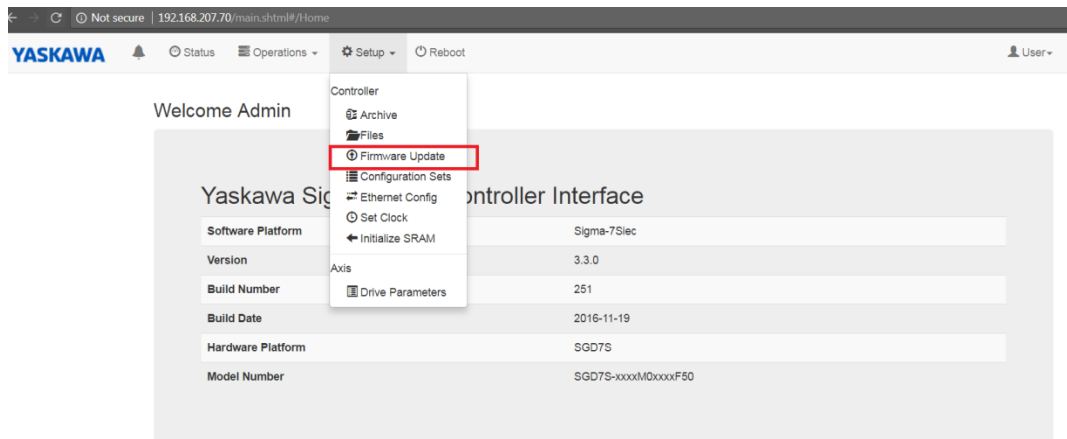


FIGURE 3: FIRMWARE UPDATE

Reboot the controller to supervisor mode by clicking on "*Reboot to Supervisor*"

Title: How to update the SigmaLogic Software Package

Product(s): SigmaLogic, SigmaLogic7 Compact

Doc. No. PN.SigmaLogic.02

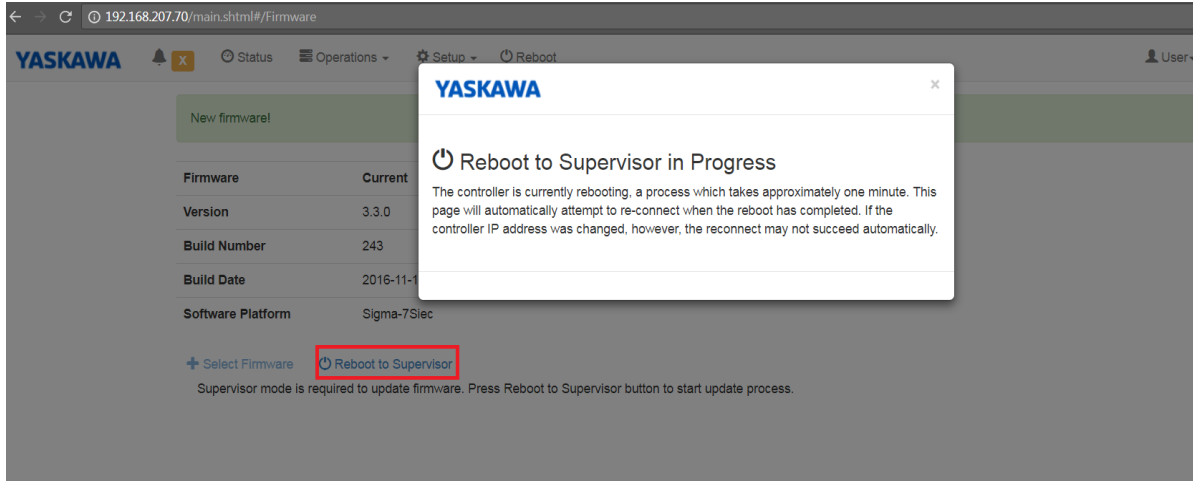


FIGURE 4: REBOOT TO SUPERVISOR MODE

After the controller reboots into supervisor mode, click on “*Select Firmware*” and navigate to the downloaded firmware zip file and click on *Send*, then *Update*. The controller will take several minutes to update. **Do not turnoff or reboot the controller until the update process is complete.** A ‘Reboot Required’ message will show up after the successful update as shown in Fig. 5. Reboot the controller one more time to finish the process.

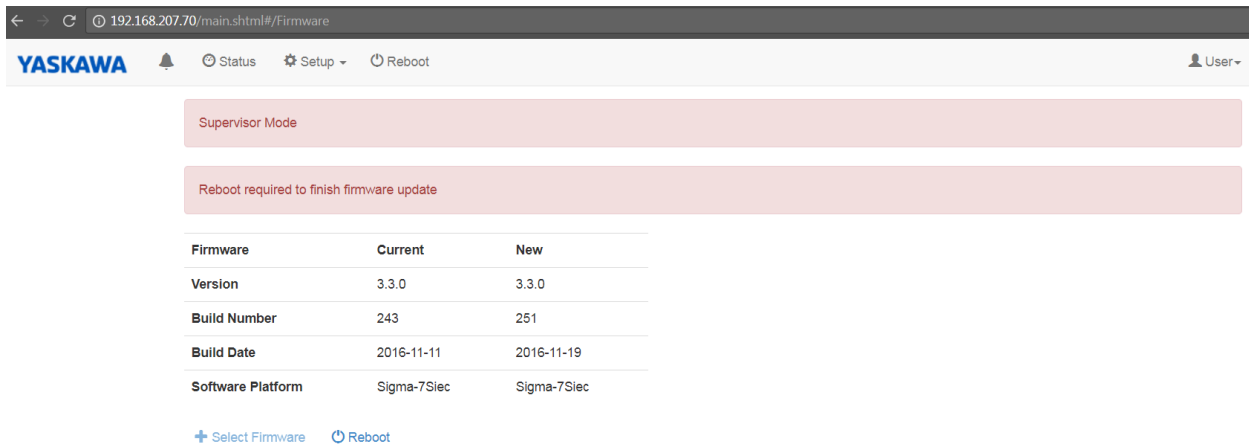


Figure 5: IMAGE SHOWING SUCCESSFUL FIRMWARE UPDATE

Title: How to update the SigmaLogic Software Package

Product(s): SigmaLogic, SigmaLogic7 Compact

Doc. No. PN.SigmaLogic.02

2.2. Update LogicWorks

Download and Install the compatible LogicWorks software configuration utility. Once the software is successfully installed, run logicworks, open the existing LogicWorks project and update it to the current version as shown in Fig. 6.

NOTE: If upgrading from v1.x to v2.x, the project file format will be permanently changed. Be sure to save a copy of the original project for your records.

Once the project is updated, enter the IP address and connect to the SigmaLogic unit.

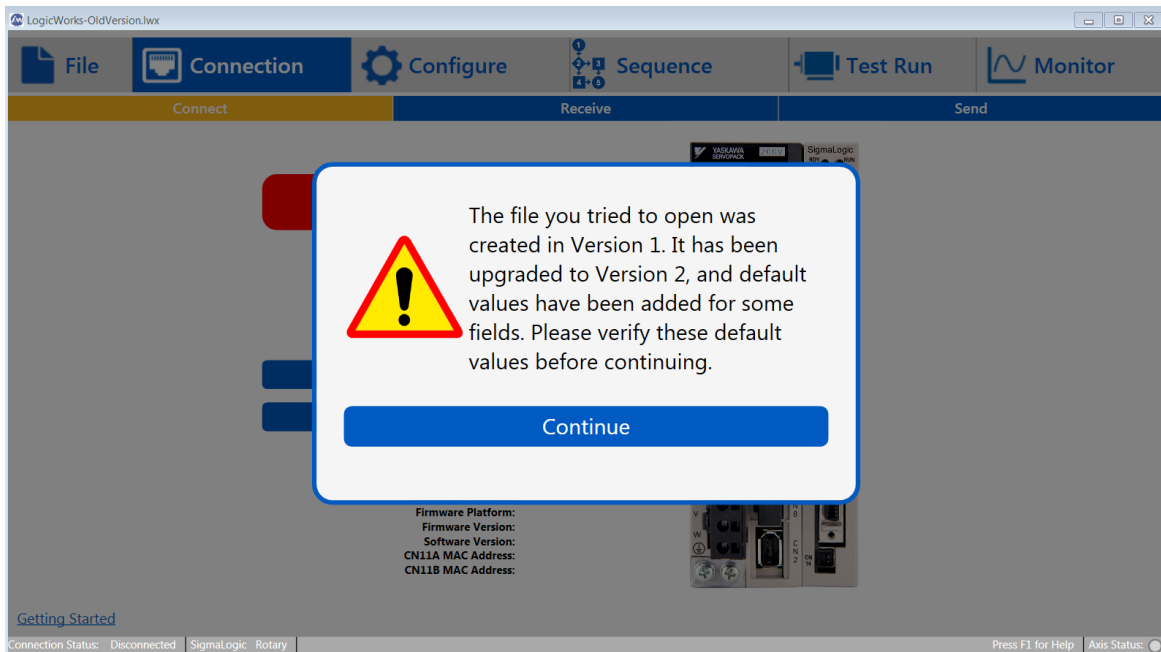


FIGURE 6: LOGIC WORKS PROJECT UPDATE

Title: How to update the SigmaLogic Software Package

Product(s): SigmaLogic, SigmaLogic7 Compact

Doc. No. PN.SigmaLogic.02

2.3. Update SigmaLogic Embedded Software

The SigmaLogic embedded software can be updated by navigating to the *Configure -> Update* page as shown in Fig. 7.

Update SigmaLogic Software will only update the embedded software leaving the controller and drive parameters unchanged.

After SigmaLogic Software update is complete, perform the following two step process only for upgrades from software package version 1.x to 2.x

Step 1: Navigate to Configure -> Option -> Import ServoPack Pn's

Step 2: Navigate to Connection -> Send -> Send to SigmaLogic Axis (Include both Axis Configuration and Sequence Table)

Return to Factory Settings will update the embedded software **and** re-initialize the configuration settings and drive parameters to default values.

CAUTION: Any existing configuration will be lost during *Return to Factory Settings*. Make sure there is a backup of the current project before executing this function.



FIGURE 7: SIGMALOGIC EMBEDDED SOFTWARE UPDATE

Title: How to update the SigmaLogic Software Package

Product(s): SigmaLogic, SigmaLogic7 Compact

Doc. No. PN.SigmaLogic.02

After a successful update and reboot, the controller CPU status will change to **“Running”** and the connection page will indicate the new software and firmware version as shown in Fig. 8

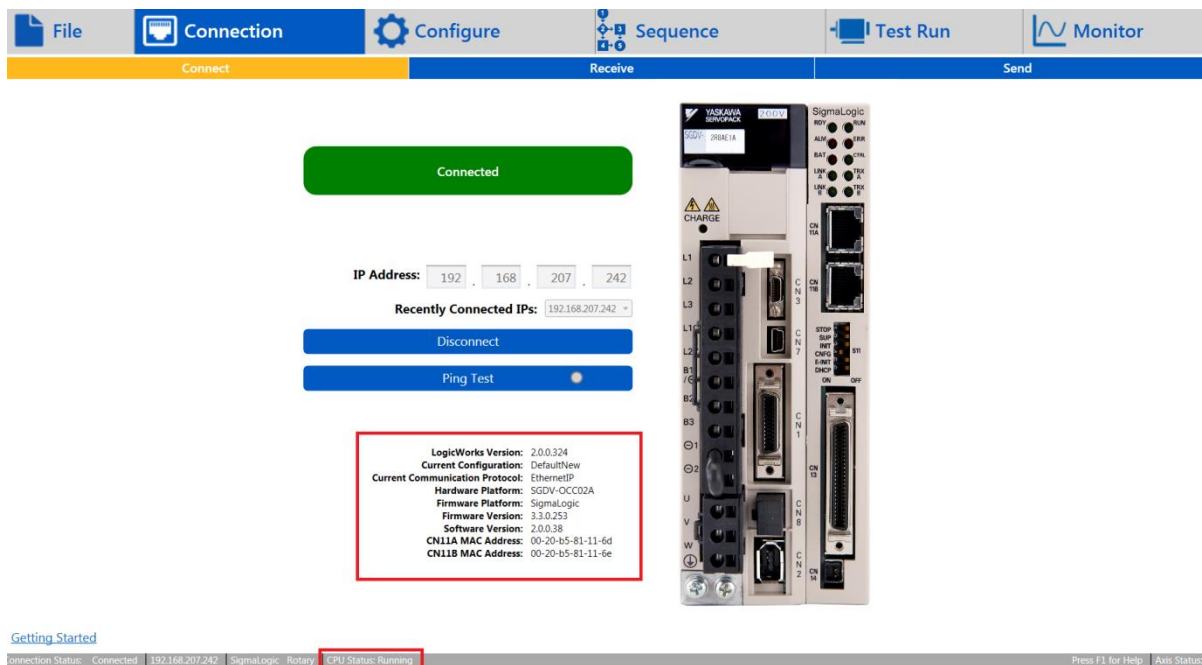


FIGURE 8: SIGMALOGIC SOFTWARE UPDATE STATUS

2.4. Update AOIs and User Defined Types in RSLOGIX 5000

Download and unzip the compatible Add-On Instructions for RSLogix 5000 from the webpage as shown in Fig.9. Please remember that rows denote compatible versions of package elements.

Title: How to update the SigmaLogic Software Package

Product(s): SigmaLogic, SigmaLogic7 Compact

Doc. No. PN.SigmaLogic.02

SigmaLogic Software Package					
Release Date	Release Notes	LogicWorks Configuration Utility	Add-On Instructions for RSLogix 5000	SigmaLogic Embedded Software	SigmaLogic Firmware
05/2017	RN.SigmaLogic.04	v2.0.0	v2.0.0	SigmaLogic v2.0.0	SigmaLogic v3.3.0
				SigmaLogic7 v2.0.0	SigmaLogic7 v3.3.0
11/2015	RN.SigmaLogic.03	v1.1.2	v1.2.0	v1.2.1	v3.0.0
12/2014	RN.SigmaLogic.02	v1.1.1		v1.2.0	
10/2014	RN.SigmaLogic.01	v1.1.0	v1.1.0	v1.1.0	

FIGURE 9: AOI DOWNLOAD LINKS

Open the RSLogix Program, import and overwrite all the Motion and Datatype AOIs into your program.

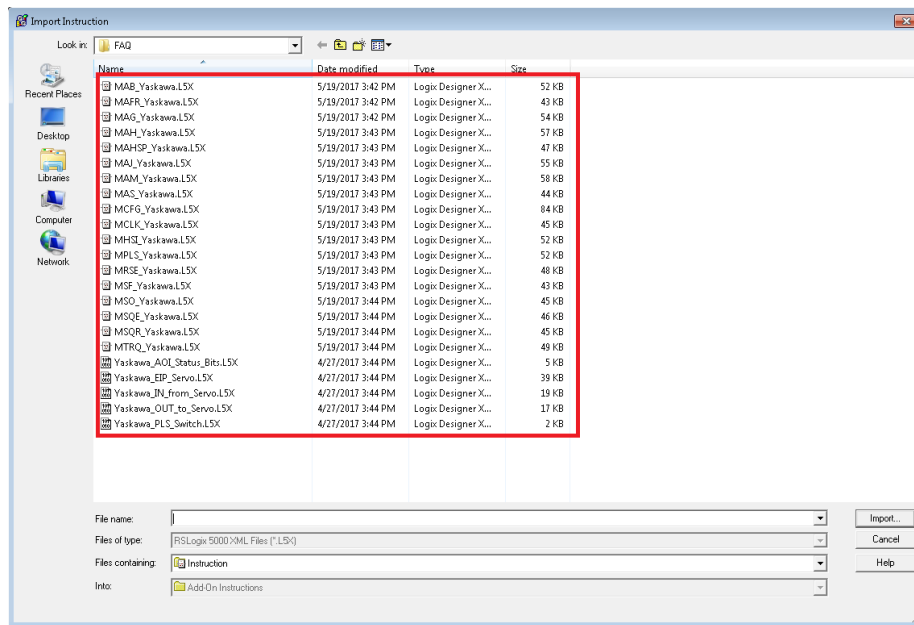


FIGURE 10: IMPORTING ADD-ON INSTRUCTIONS INTO YOUR RSLOGIX PROGRAM

Title: How to update the SigmaLogic Software Package

Product(s): SigmaLogic, SigmaLogic7 Compact

Doc. No. PN.SigmaLogic.02

After successfully importing the AOIs, compile and download the program into the Master controller. Verify that the heartbeat signal is established and there is no software mismatch error at the MCFG_Yaskawa AOI as shown in Fig. 11.

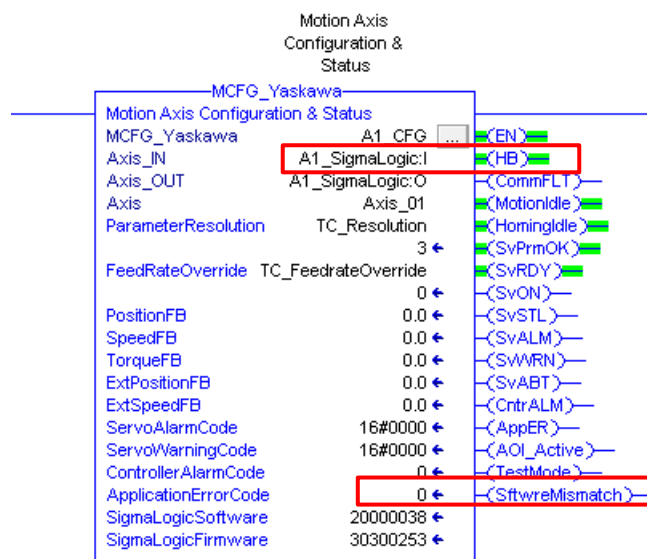


FIGURE 11: VERIFY MCFG_YASKAWA AOI FOR SOFTWARE MISMATCH