

CUSTOMER WIRING REQUIREMENTS

- FOR 0 TO 100 AMPS, USE A MINIMUM OF 60°-75°C COPPER WIRE.
 - FOR ABOVE 100 AMPS, USE A MINIMUM OF 75°C COPPER WIRE.
- (UNLESS SPECIFIED OTHERWISE)

TABLE 1

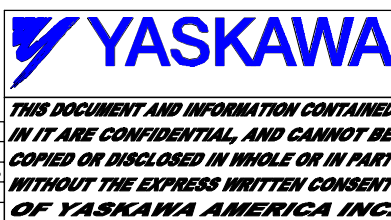
A1000 CONFIG. MODEL NO. BASE NUMBER A1C*XXXX			A.C. LINE WIRING					
240V	480V	600V	WITH OPTION PC OR PE, TO CIRCUIT BREAKER CB1			OR, WITH OPTION PD, TO DISCONNECT SWITCH S1		
MFG. PART NUMBER	CURRENT RATING (AMPS)	WIRE SIZE RANGE (AWG)	TIGHTENING TORQUE (LB.-IN.)	MFG. PART NUMBER	CURRENT RATING (AMPS)	WIRE SIZE RANGE (AWG)	TIGHTENING TORQUE (LB.-IN.)	
A002 B001 C1P3	H_L36015	15	14 - 10	50	BTCN30	30	14 - 10	35
A003 B003 C002			OR	OR			OR	OR
A004 B004 C003			8 - 3/0	120			8 - 4	40
A006 B007 C006							OR	OR
A009 B011 C009	H_L36020	20					3, 2	45
A015 B014 C011	H_L36025	25			BTDN60	60		
	H_L36035	35						
A022 B021	H_L36040	40						
A028 B027 C022	H_L36050	50						
	H_L36060	60						
	H_L36050	50						
A042 B040 C041	H_L36070	70						
	H_L36080	80						
	C052							
A054 B065	H_L36090	90						
	H_L36100	100						
A068 B077	H_L36110	110						
A080	H_L36125	125						
	H_L36125	125						
A104	H_L36150	150						
	H_L36175	175	4 - 4/0	225				
A130	J_L36200LY	200						
	C125							
	C144							
A154 B156	J_M36225	225	3/0 - 350 kcmil	225				
	J_M36250	250						
A192	L_L36400U31X	400	(1-2) x (2/0-500 kcmil)	(1-2) x 442	JGM36000S25	250	3/0 - 350 kcmil	225
	C192				LGL36000S40X	400	(1-2) x (2/0-500 kcmil)	(1-2) x 442
A248 B240	L_M36400U31X	400			LGM36000S40X	400	(1-2) x (2/0-500 kcmil)	(1-2) x 442
A312 B302								
A360 B361	M_L36500	500	(1-3) x (3/0-500 kcmil)	(1-3) x 450	LGL36000S40X	400	(1-2) x (2/0-500 kcmil)	(1-2) x 442
	M_L36600	600			LGL36000S60X	600	(1-2) x (2/0-500 kcmil)	(1-2) x 442
	M_L36700	700			PJL36000S60	600	(1-3) x (3/0-500 kcmil)	(1-3) x 450
	B477							
	B515							
	B590	M_L36800	800		PJL36000S80	800	(1-3) x (3/0-500 kcmil)	(1-3) x 450

TABLE 2

A1000 CONFIG. MODEL NO. BASE NUMBER A1C*XXXX			A.C. LINE WIRING		
240V	480V	600V	OR, WITHOUT OPTIONS PC, PD OR PE TO INPUT POWER TERMINAL BLOCK TB2		
MFG. PART NUMBER	WIRE SIZE RANGE (AWG)	TIGHTENING TORQUE (LB.-IN.)			
A002 B001 C1P3	6H12-TSCU-F	16 - 10	35		
A003 B002 C1P7		OR	OR		
A004 B003 C002		8	40		
A006 B004 C003		OR	OR		
A009 B007 C006		6 - 4	45		
A015 B011 C009					
A022 B014 C011					
A028 B021 C017					
	B027 C022				
	B034 C027				
	C032				
	C041				
A042 B040 C052	1423572	14 - 10	35		
A054 B052 C062		OR	OR		
A068 B065 C077		8	40		
A080 B077		OR	OR		
	B096	6 - 2/0	120		
A104 B124 C099	MPDB67003	6 - 350 kcmil	275		
A130 B156 C125					
A154 B180 C144					
A192	C192				
A248 B240	MPDB69123	(1-2) x (6-350 kcmil)	(1-2) x 275		
A312 B302					
A360 B361					
	B414				
	B477	MPDB69313	(1-2) x (4-500 kcmil)	(1-2) x 500	
	B515				
	B590	1453411	(1-2) x (4-600 kcmil)	(1-2) x 500	

TABLE 3

A1000 CONFIG. MODEL NO. BASE NUMBER A1C*XXXX			BLOWER MOTOR STARTER WIRING		
240V	480V	600V	WITH OPTION TB, TO OVERLOAD RELAY S10		
MFG. PART NUMBER	WIRE SIZE RANGE (AWG)	TIGHTENING TORQUE (LB.-IN.)			
A002 B001 C1P3	LRD15	18 - 8	15		
A003 B002 C1P7					
A004 B003 C002					
A006 B004 C003					
A009 B007 C006					
A015 B011 C009					
A022 B014 C011					
A028 B021 C017					
A042 B027 C022					
A054 B034 C027					
A068 B040 C032					
A080 B052 C041					
A104 B065 C052					
A130 B077 C062					
A154 B096 C077					
A192 B124 C099					
A248 B156 C125					
A312 B180 C144					
A360 B240 C192					
	B302				
	B361				
	B414				
	B477				



DRAWN BY: D.R. CMELAK	DATE 8/8/12	TITLE: CUSTOMER CONNECTION A1000 CONFIGURED TYPE 12 HD RATING
CHECKED BY: D. PACKER	DATE 8/8/12	SIZE C
TECH:	DATE	REVISION 04
APPROVED BY: K. FLIERL	DATE 8/8/12	PAGE 1 of 2
ORIGINAL DESIGN: S. ROBERSON	DATE 2/2/12	DRAWING #: UDE00340

REVISIONS				
REV.	DESCRIPTION	ECO #	DRAWN BY	DATE
03	ADDED NEW STYLE MERSEN #'s & RANGES	4734	NSL	11/18/13
04	Chg. A022 & B021 Disconnect Sw.'s to BTDN60	3591	DRC	8/8/12
02	Change B096 Disconnect Switch to TFB1	3586	DRC	8/2/12

CUSTOMER WIRING REQUIREMENTS

- FOR 0 TO 100 AMPS, USE A MINIMUM OF 60°-75°C COPPER WIRE.
- FOR ABOVE 100 AMPS, USE A MINIMUM OF 75°C COPPER WIRE.
(UNLESS SPECIFIED OTHERWISE)

TABLE 4			A.C. MOTOR WIRING			EARTH GROUND WIRING				
A1000 CONFIG. MODEL NO. BASE NUMBER A1C *XXXX			WITH OPTION PH, TO LOAD REACTOR L4			OR, WITHOUT OPTION PH, TO STANDARD AC DRIVE	A.C. LINE GROUND LUG		BLOWER MOTOR GROUND LUG	
			MFG. PART NUMBER	WIRE SIZE RANGE (AWG)	TIGHTENING TORQUE (LB.-IN.)		WIRE SIZE RANGE (AWG)	TIGHTENING TORQUE (LB.-IN.)	WIRE SIZE RANGE (AWG)	TIGHTENING TORQUE (LB.-IN.)
240V	480V	600V								
	B001	C1P3	RLW-01P60_	22 - 10	4.5					
		C1P7	RLW-02P10_			14-10	35	14-10	35	
	B002	C002	RLW-03P40_			OR	OR	OR	OR	
A002	B003	C003	RLW-04P80_			8	40	8	40	
A003	B004	C006	RLW-07P60_			OR	OR	OR	OR	
A004						6-4	45	6-4	45	
	B007	C009	RLW-00110_			OR	OR	OR	OR	
A006	B011	C011	RLW-00140_			2	50	2	50	
A009	B014	C017	RLW-00210_	14 - 6	16					
A015		C022	RLW-00280_							
A022										
A028	B021	C027	RLW-00350_							
	B027									
	B034	C032	RLW-00460_							
A042	B040	C041	RLW-00550_	6 - 1/0	45					
	B052	C052	RLW-00650_							
A054	B065	C062	RLW-00830_							
A068										
A080	B077	C077	RLW-01040_							
A104	B096		RLW-01300_	2 - 1	150					
A130	B124		RLW-01600_	OR	OR					
A154	B156		RLW-02000_	1/0 - 2/0	180					
		C099	RLW-01300_	OR	OR					
		C125	RLW-01600_	3/0 - 4/0	250					
		C144	RLW-02000_			14-2/0	120			
	B180		RLW-02500_							
A192	C192		RLW-02500_	250 - 350	325					
	B240		RLW-03220_	OR	OR					
			RLW-03220_	400-500 kcmil	375					
	B302		RLW-04140_	(1-2) x (6-350 kcmil)	(1-2) x 375					
A248			RLW-03220_							
A312			RLW-04140_							
	B361		RLW-05150_							
A360						6-250 kcmil	275			
	B414		RLW-06000_							
	B477									
	B515		RLW-07500_							
	B590									


CUSTOMER TO SUPPLY
A UL LISTED
CLOSED-LOOP
CONNECTOR, PER
THE AC DRIVE
TECHNICAL MANUAL
USE 75°C COPPER
WIRE ONLY

CUSTOMER TO SUPPLY A
UL LISTED CLOSED-LOOP
CONNECTOR

TABLE 5			OPTION PL				CONTROL WIRING	
A1000 CONFIG. MODEL NO. BASE NUMBER A1C *XXXX			TO A1000 DRIVE		OR, TO CDBR A2, A3, A4		TERMINAL BLOCK TB1	
			WIRE SIZE RANGE (AWG)	TIGHTENING TORQUE (LB.-IN.)	WIRE SIZE RANGE (AWG)	TIGHTENING TORQUE (LB.-IN.)	WIRE SIZE RANGE (AWG)	TIGHTENING TORQUE (LB.-IN.)
240V	480V	600V						
A002	B001	C1P3					24 - 16	4.4 - 5.3
A003	B002	C1P7						
A004	B003	C002						
A006	B004	C003						
A009	B007	C006						
A015	B011	C009						
A022	B014	C011						
A028	B021	C017						
A042	B027	C022						
A054	B034	C027						
A068	B040	C032						
A080	B052	C041						
A104								
A130	B065	C052						
A154	B077	C062						
A192	B096	C077						
A248	B124	C099						
A312	B156	C125						
A360	B180	C144						
	B240	C192						
	B302							
	B361							
	B414							
	B477							
	B515							
	B590							

CUSTOMER TO SUPPLY
A UL LISTED
CLOSED-LOOP
CONNECTOR, PER
THE AC DRIVE
TECHNICAL MANUAL
USE 75°C COPPER
WIRE ONLY

CUSTOMER TO SUPPLY
A UL LISTED
CLOSED-LOOP
CONNECTOR, PER
THE AC DRIVE
TECHNICAL MANUAL
USE 75°C COPPER
WIRE ONLY

 <p>THIS DOCUMENT AND INFORMATION CONTAINED IN IT ARE CONFIDENTIAL, AND CANNOT BE COPIED OR DISCLOSED IN WHOLE OR IN PART WITHOUT THE EXPRESS WRITTEN CONSENT OF YASKAWA AMERICA INC.</p>	DRAWN BY: D.R. CMELAK	DATE: 8/8/12	TITLE: CUSTOMER CONNECTION A1000 CONFIGURED TYPE 12 HD RATING
	CHECKED: D. PACKER	DATE: 8/8/12	SIZE: C REVISION: 04 PAGE: 2 of 2
	TECH: APPROVED: K. FLIERL ORIGINAL DESIGN: S. ROBERSON	DATE: 8/8/12 DATE: 2/2/12	DRAWING #: UDE00340