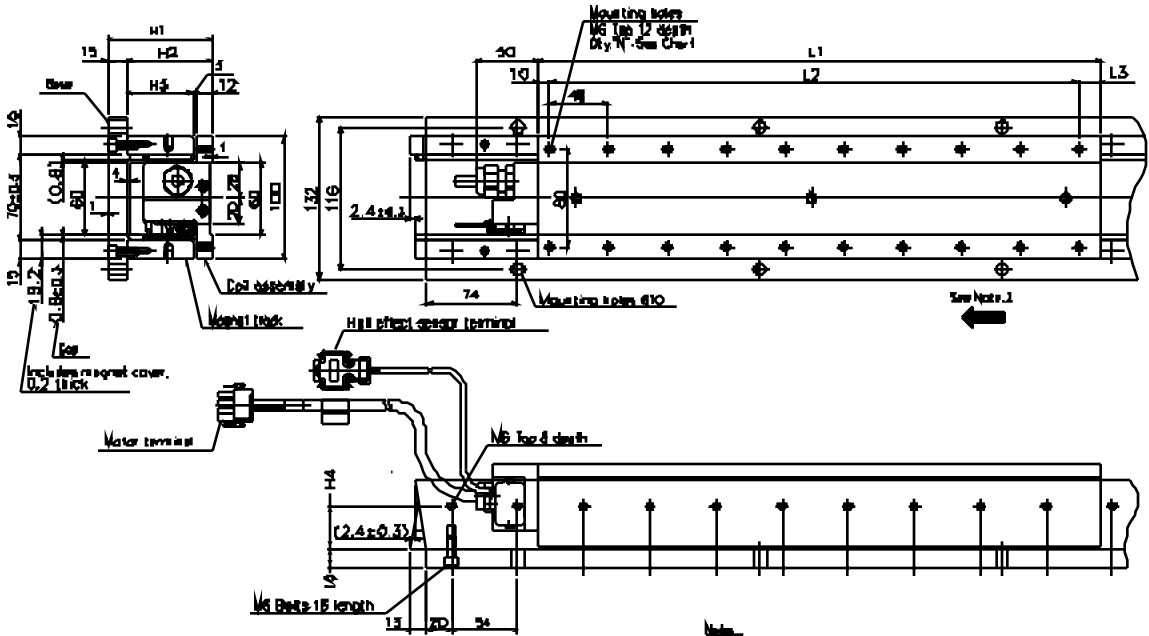


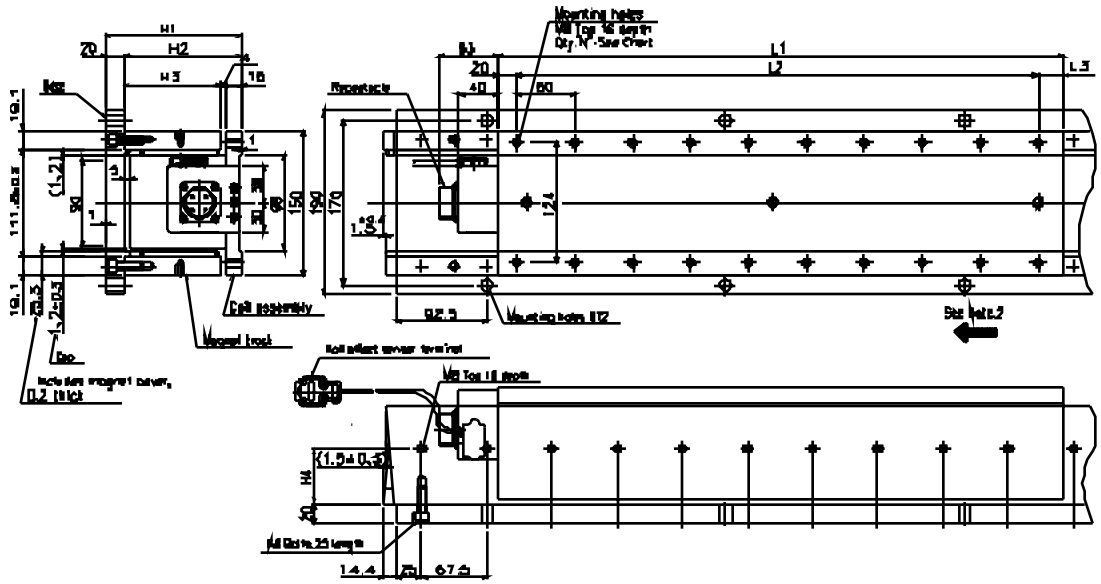
Dimensional Drawing of SGLTW-20, SGLTW-35



Notes:
 1 All dimensions are in mm.
 2 Coil assembly magnet is carry direction when permeated phase U,V, or W in order.
Warning:
 Strong magnetic field exists near the magnets. Users of robots or other similar devices are strongly recommended to maintain a distance of 200mm from the magnets.

| Motor Model SGLTW- | Dim. L1 | Dim. L2 | Dim. L3 | Dim. H1 | Dim. H2 | Dim. H3 | Dim. H4 | Units N | Mass (Kg) | Magnet Track Model SGLTM- |
|--------------------|---------|---------|---------|---------|---------|---------|---------|---------|-----------|---------------------------|
| 20A170A□ | 170 | 144 | 16 | 70 | 55 | 40 | 27 | 8 | 2.6 | 20□□□A |
| 20A320A□ | 315 | 288 | 17 | | | | | 14 | 4.6 | |
| 20A460A□ | 460 | 432 | 18 | | | | | 20 | 6.7 | |
| 35A170A□ | 170 | 144 | 16 | 85 | 70 | 55 | 34.5 | 8 | 3.7 | 40□□□A |
| 35A320A□ | 315 | 288 | 17 | | | | | 14 | 6.8 | |
| 35A460A□ | 460 | 432 | 18 | | | | | 20 | 10 | |

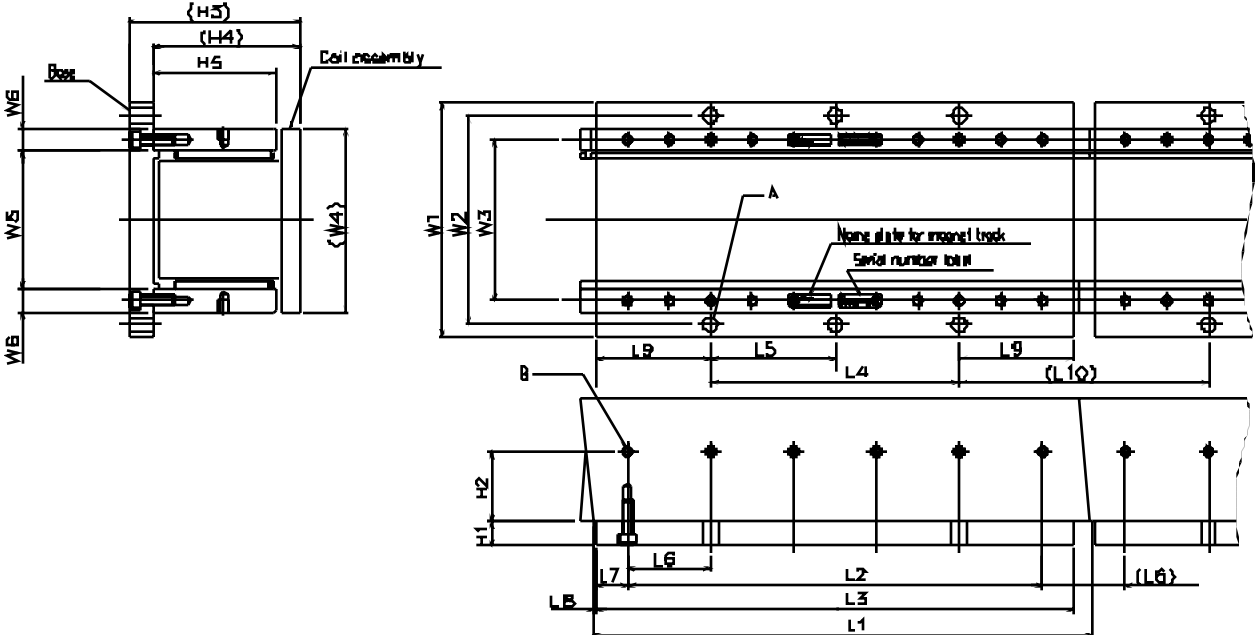
Dimensional Drawing of SGLTW-40, SGLTW-80



Notes
 1. All dimensions are in mm.
 2. Cap assembly moves in any direction with compressed phase U, V, and W in order.
Warning
 Strong magnetic field exists near the magnets. Use of palmtops and similar devices are strongly recommended to maintain minimum distance of 200mm from the magnets.

| Motor Model SGLTW- | Dim. L1 | Dim. L2 | Dim. L3 | Dim. H1 | Dim. H2 | Dim. H3 | Dim. H4 | Unit s N | Mass (Kg) | Magnet Track Model SGLTM- |
|--------------------|---------|---------|---------|---------|---------|---------|---------|----------|-----------|---------------------------|
| 40A400A□ | 395 | 360 | 15 | 103 | 83 | 63 | 39 | 14 | 20 | 40□□□A |
| 40A600A□ | 585 | 540 | 25 | | | | | 20 | 30 | |
| 80A400A□ | 395 | 360 | 15 | 140 | 120 | 100 | 57 | 14 | 30 | 80□□□A |
| 80A600A□ | 585 | 540 | 25 | | | | | 20 | 43 | |

Dimensional Drawing of Magnet Track (Applicable only to North American Markets)



| | | Magnet Track Model | | | | | | | | | | | |
|------------|-----------------|--------------------|------------------|-----------------|------------------|------------------|------------------|-------------------|-------------------|------------------|-------------------|-------------------|-----------------|
| | | 20324AY | 20540AY | 20756AY | 35324AY | 35540AY | 35756AY | 40405AY | 40675AY | 40945AY | 80405AY | 80675AY | 80945AY |
| Mass (Kg) | | 5.1 | 8.5 | 12 | 6.4 | 11 | 15 | 13 | 21 | 30 | 18 | 31 | 43 |
| Dimensions | L1 | 324 | 540 | 756 | 324 | 540 | 756 | 405 | 675 | 945 | 405 | 675 | 945 |
| | L2 | 270 | 486 | 702 | 270 | 526 | 742 | 337.5 | 607.5 | 877.5 | 337.5 | 607.5 | 877.5 |
| | L3 | 310 | 526 | 742 | 310 | 526 | 742 | 387.5 | 657.5 | 927.5 | 387.5 | 657.5 | 927.5 |
| | L4 | 162 | 378 | 594 | 162 | 378 | 594 | 202.5 | 472.5 | 742.5 | 202.5 | 472.5 | 742.5 |
| | L5 | 162 | 189 | 198 | 162 | 189 | 198 | 202.5 | 236.5 | 247.5 | 202.5 | 236.5 | 247.5 |
| | L6 | 54 | 54 | 54 | 54 | 54 | 54 | 67.5 | 67.5 | 67.5 | 67.5 | 67.5 | 67.5 |
| | L7 | 20 | 20 | 20 | 20 | 20 | 20 | 25 | 25 | 25 | 25 | 25 | 25 |
| | L8 | 23 | 2.3 | 2.3 | 1 | 1 | 1 | 5 | 5 | 5 | 3.1 | 3.1 | 3.1 |
| | L9 | 74 | 74 | 74 | 74 | 74 | 74 | 92.5 | 92.5 | 92.5 | 92.5 | 92.5 | 92.5 |
| | L10 | 162 | 162 | 162 | 162 | 162 | 162 | 202.5 | 202.5 | 202.5 | 202.5 | 202.5 | 202.5 |
| | W1 | 132 | 132 | 132 | 132 | 132 | 132 | 190 | 190 | 190 | 190 | 190 | 190 |
| | W2 | 116 | 116 | 116 | 116 | 116 | 116 | 170 | 170 | 170 | 170 | 170 | 170 |
| | W3 | 87 | 87 | 87 | 87 | 87 | 87 | 131 | 131 | 131 | 131 | 131 | 131 |
| | W4 | 100 | 100 | 100 | 100 | 100 | 100 | 150 | 150 | 150 | 150 | 150 | 150 |
| | H1 | 15 | 15 | 15 | 15 | 15 | 15 | 20 | 20 | 20 | 20 | 20 | 20 |
| | H2 | 27 | 27 | 27 | 34.5 | 34.5 | 34.5 | 39 | 39 | 39 | 57 | 57 | 57 |
| | H3 | 70 | 70 | 70 | 85 | 85 | 85 | 103 | 103 | 103 | 140 | 140 | 140 |
| | H4 | 55 | 55 | 55 | 70 | 70 | 70 | 83 | 83 | 83 | 120 | 120 | 120 |
| | H5 | 40 | 40 | 40 | 55 | 55 | 55 | 63 | 63 | 63 | 100 | 100 | 100 |
| | A | 2 x 2 - 10 Hole | 2 x 3 - 10 Hole | 2 x 4 - 10 Hole | 2 x 2 - 10 Hole | 2 x 3 - 10 Hole | 2 x 4 - 10 Hole | 2 x 2 - 10 Hole | 2 x 3 - 10 Hole | 2 x 4 - 10 Hole | 2 x 2 - 10 Hole | 2 x 3 - 10 Hole | 2 x 4 - 10 Hole |
| B | 2 x 6 - M6 x 8L | 2 x 10 - M6 x 8L | 2 x 14 - M6 x 8L | 2 x 6 - M6 x 8L | 2 x 10 - M6 x 8L | 2 x 14 - M6 x 8L | 2 x 6 - M8 x 10L | 2 x 10 - M8 x 10L | 2 x 14 - M8 x 10L | 2 x 6 - M8 x 10L | 2 x 10 - M8 x 10L | 2 x 14 - M8 x 10L | |