

- NOTES:**
- CONNECTED TO THE CABINET. CUSTOMER TO CONNECT THE CABINET GROUND LUGS TO EARTH GROUND AND UTILITY GROUND.
 - INSULATED TWISTED SHIELDED WIRE IS REQUIRED. SHIELD TO CONNECT TO PROPER TERMINAL AS SHOWN. CONNECT THE SHIELD ONLY AT THIS END. STUB AND ISOLATE THE OTHER END. DO NOT RUN THESE WIRES IN THE SAME CONDUIT AS THE AC POWER AND THE AC CONTROL WIRES. KEEP ALL WIRING UNDER 50m IN LENGTH.
 - WITH A CONTROL TRANSFORMER, T1, POWER RATING 350VA OR GREATER, SECONDARY FUSE FB IS ADDED.
 - WITHOUT THE INPUT CIRCUIT BREAKER OPTION PC, OR WHEN NOTED ON THE CABINET NAMEPLATE, BRANCH CIRCUIT PROTECTION MUST BE SUPPLIED BY THE INSTALLER.
 - CUSTOMER TO ADJUST THE THERMOSTAT ON THE SPACE HEATER HR1 FOR THE MINIMUM DESIRED TEMPERATURE INSIDE THE DRIVE CABINET. THIS SET TEMPERATURE IS NORMALLY SELECTED TO BE SLIGHTLY HIGHER THAN THE MINIMUM AMBIENT TEMPERATURE OF THE AIR SURROUNDING THE CABINET AND IS THE TEMPERATURE AT WHICH THE SPACE HEATER HR1 WILL SHUT OFF.
 - CONDUIT FITTINGS/HUBS SHALL COMPLY WITH THE STANDARD FOR CONDUIT, TUBING, AND CABLE FITTINGS, UL 514B OR CONDUIT FITTINGS HAVING THE SAME ENVIRONMENTAL RATING AS THE ENCLOSURE SHALL BE USED.
 - TERMINALS P1 AND P1 ARE FOR MOMENTARY POWER LOSS RECOVERY UNIT. DO NOT CONNECT TO AC POWER SUPPLY.
 - CUSTOMER TO REPLACE THE JUMPER WITH NORMALLY CLOSED SAFETY INTERLOCKS, IF APPLICABLE.

— INDICATES COMPONENTS NOT SUPPLIED BY YASKAWA
 * INDICATES CUSTOMER WIRING
 ⚡ - CONNECTED TO THE CABINET OR PANEL

SEE DRAWING UDE00638 FOR DRIVE PARAMETERS.
 SEE DRAWING UDE00639 FOR CUSTOMER CONNECTIONS.

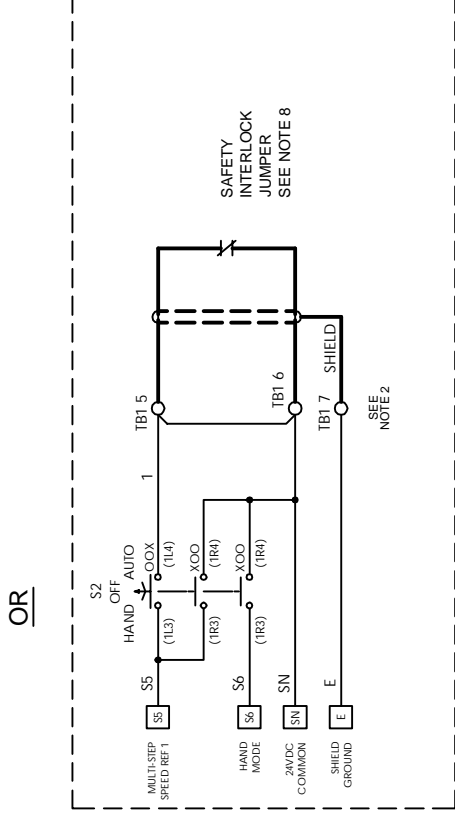
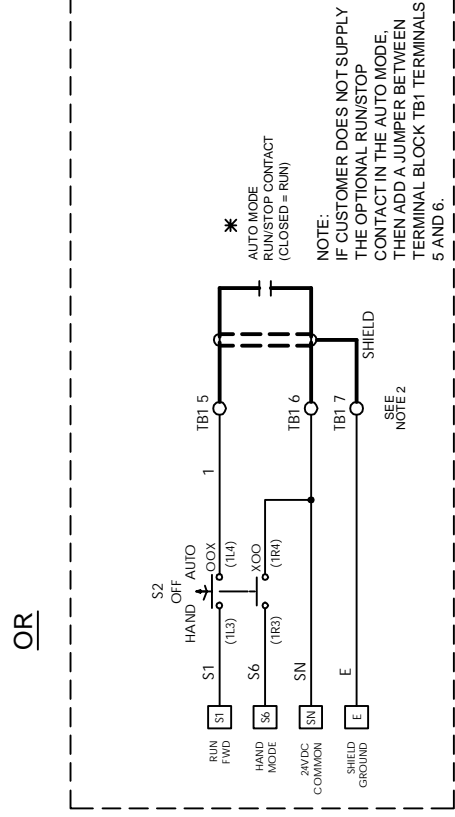
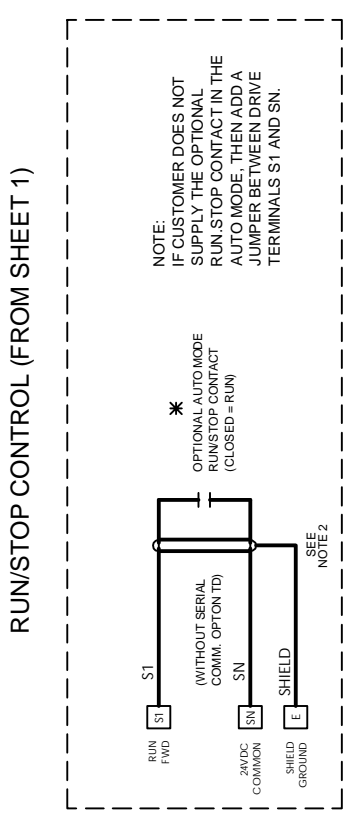
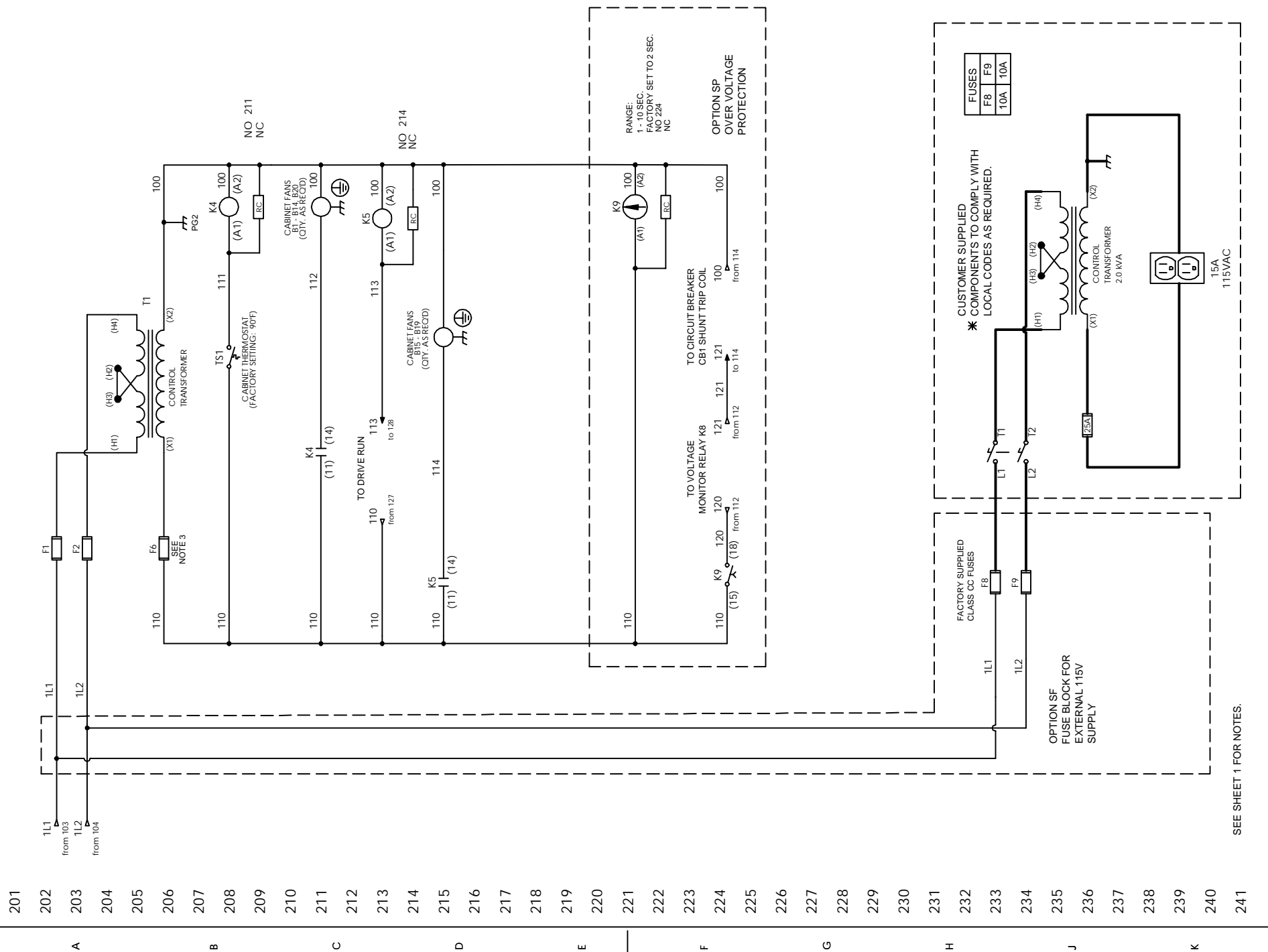
YASKAWA
 THIS DOCUMENT AND INFORMATION CONTAINED HEREIN ARE CONFIDENTIAL AND CANNOT BE COPIED OR REPRODUCED IN WHOLE OR IN PART WITHOUT THE EXPRESS WRITTEN CONSENT OF YASKAWA AMERICA, INC. © N. LAWS

REV.	DESCRIPTION	ECO #	DATE	REVISIONS
01	FIXED CB1 CONNECTIONS	9683	08/24/19	
00	INITIAL RELEASE	-	05/21/18	

DATE	05/17/18	DATE	05/17/18	DATE	05/17/18
DRAWN BY	N. LAWS	CHECKED	K. MALUSIC	DATE	05/21/18
APPROVED	K. FLIERL	DATE	05/17/18	DATE	05/17/18
ORIGINATOR	N. LAWS	DATE	05/17/18	DATE	05/17/18

FILE: SCHEMATIC DIAGRAM U1000 IQPUMP CONFIGURED TYPE 3R, 480V
 DRAWING # DS.Q1E3.16
 PAGE 1 of 2

REV.	DESCRIPTION	ECO #	DATE	REVISIONS
01	FIXED CB1 CONNECTIONS	9683	08/24/19	
00	INITIAL RELEASE	-	05/21/18	



CONTACT SEQUENCE CHART FOR S2
X - INDICATES CONTACT CLOSED

CONTACT	POSITION		MANUF. LOCATION /TYPE
	HAND	AUTO	
1	X		1RO
2		X	1LO

SHEMATIC SHOWS THIS POSITION.

OPTION TY,
AND WITHOUT
OPTION TD SERIAL
COMMUNICATION

CONTACT SEQUENCE CHART FOR S2
X - INDICATES CONTACT CLOSED

CONTACT	POSITION		MANUF. LOCATION /TYPE
	HAND	AUTO	
1	X		1RO
2		X	1LO
3	X		2RO

SHEMATIC SHOWS THIS POSITION.

OPTION TY,
AND WITH
OPTION TD SERIAL
COMMUNICATION

YASKAWA

THIS DOCUMENT AND INFORMATION CONTAINED IN IT ARE CONFIDENTIAL AND CANNOT BE COPIED OR DISCLOSED IN WHOLE OR IN PART WITHOUT THE EXPRESS WRITTEN CONSENT OF YASKAWA AMERICA, INC.

DRAWN BY N. LAWS	DATE 05/17/18	TITLE SCHEMATIC DIAGRAM U1000 IQPUMP CONFIGURED TYPE 3R, 480V
CHECKED BY K. MALUSIC	DATE 05/18/18	
TECH	DATE	
APPROVED BY K. FLIERL	DATE 05/21/18	SIZE D
ORIGINAL DESIGN	DATE 05/17/18	REV/ISSN R01
		PAGE 2 of 2

DRAWING # **DS.Q1E3.16**